

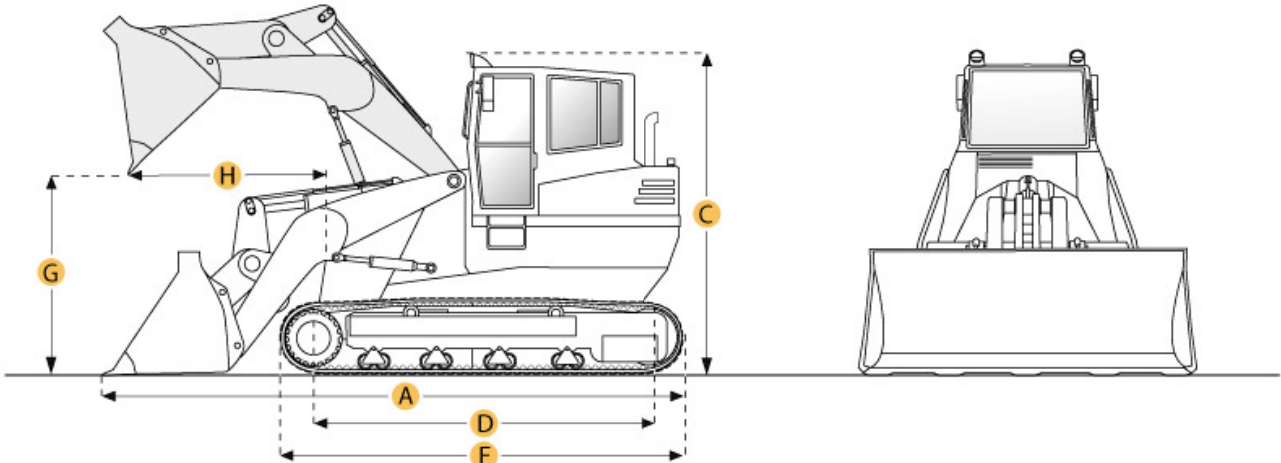
[Home](#) → [Spec Search](#) → [Construction Equipment](#) → [Crawler Loader](#) → [Caterpillar](#) → 935C Series II

CATERPILLAR 935C SERIES II CRAWLER LOADER

[VIEW ARTICLES ON THIS ITEM](#)

 Print specification

[Help improve this specification](#)



Selected Dimensions

Dimensions		
A. LENGTH WITH BUCKET ON GROUND	14.2 ft in	4318 mm
B. WIDTH TO OUTSIDE OF TRACKS	5.8 ft in	1780 mm
C. HEIGHT TO TOP OF CAB	8.8 ft in	2680 mm
E. GROUND CLEARANCE	1 ft in	312 mm
G. CLEARANCE AT FULL HEIGHT AND DUMP	8.5 ft in	2583 mm
H. REACH AT DUMP HEIGHT	2.8 ft in	866 mm

Undercarriage		
I. TRACK GAUGE	55.9 in	1420 mm

Specification

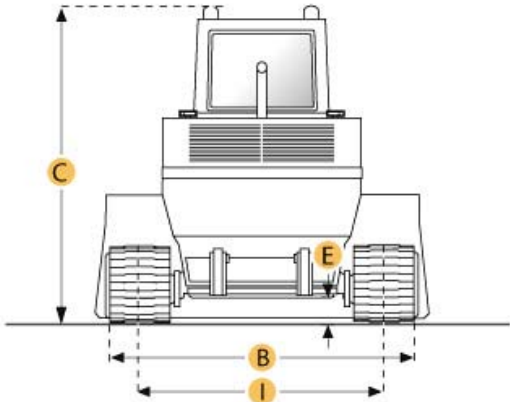
Engine		
MAKE	Caterpillar	
MODEL	3204	
NET POWER	80 hp	59.7 kw
DISPLACEMENT	317.3 cu in	5.2 L

Operational		
OPERATING WEIGHT	19310.3 lb	8759 kg
FUEL CAPACITY	30.6 gal	116 L
HYDRAULIC SYSTEM FLUID CAPACITY	15.1 gal	57 L
STATIC TIPPING LOAD	12795.6 lb	5804 kg
BREAKOUT FORCE - STD BUCKET	15098 lb	67.2 kN
BUCKET CAPACITY - STRUCK	1.1 yd3	0.84 m3
BUCKET CAPACITY - HEAPED	1.3 yd3	1 m3
MAX SPEED	6.5 mph	10.5 km/h

Undercarriage		
TRACK SHOE WIDTH	14 in	355 mm
NUMBER OF TRACK ROLLERS PER SIDE	5	
LENGTH OF TRACK ON GROUND	6.2 ft in	1900 mm
GROUND CONTACT AREA	2092.5 in2	1.4 m2
GROUND PRESSURE	8.6 psi	59 kPa
TRACK GAUGE	55.9 in	1420 mm

Hydraulic		
RAISE TIME	6.3 sec	
DUMP TIME	2.2 sec	
LOWER TIME	3.5 sec	

Dimensions		
LENGTH WITH BUCKET ON GROUND	14.2 ft in	4318 mm
WIDTH TO OUTSIDE OF TRACKS	5.8 ft in	1780 mm



HEIGHT TO TOP OF CAB	8.8 ft in	2680 mm
GROUND CLEARANCE	1 ft in	312 mm
CLEARANCE AT FULL HEIGHT AND DUMP	8.5 ft in	2583 mm
REACH AT DUMP HEIGHT	2.8 ft in	866 mm

© 2007-2010 RitchieSpecs Equipment Specifications Ritchie Bros. Auctioneers © | [Terms of Use](#) | [Privacy Statement](#)
OEM specifications are provided for base units. Actual equipment might vary with options.