



Volvo Construction Equipment

BL60B, BL70B

VOLVO BACKHOE LOADERS 7.07-10 t 94-105 hp



A passion for performance.

At Volvo Construction Equipment, we're not just coming along for the ride. Developing products and services that raise productivity – we are confident we can lower costs and increase profits for industry experts. Part of the Volvo Group, we are passionate about innovative solutions to help you work smarter – not harder.

Helping you to do more.

Doing more with less is a trademark of Volvo Construction Equipment. High productivity has long been married to low energy consumption, ease of use and durability. When it comes to lowering life-cycle costs, Volvo is in a class of its own.

Designed to fit your needs.

There is a lot riding on creating solutions that are suited to the particular needs of different industry applications. Innovation often involves high technology – but it doesn't always have to. Some of our best ideas have been simple, based on a clear and deep understanding of our customers' working lives.



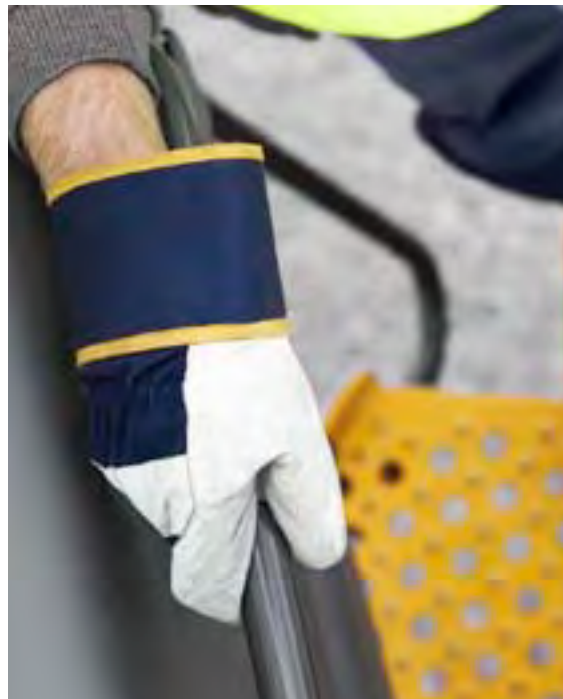
You learn a lot in 180 years.

Over the years, Volvo has advanced solutions that have revolutionized the use of construction equipment. No other name speaks Safety louder than Volvo. Protecting operators, those around them and minimizing our environmental impact are traditional values that continue to shape our product design philosophy.

We're on your side.

We back the Volvo brand with the best people. Volvo is truly a global enterprise, one that is on standby to support customers quickly and efficiently – wherever they are.

We have a passion for performance.



Volvo Trucks



Renault Trucks



Mack Trucks



UD Trucks



Volvo Buses



Volvo Construction
Equipment



Volvo Penta



Volvo Financial Services

Fuel efficiency and prime performance.

When you buy a Volvo BL60B or BL70B backhoe loader, you get a machine with nearly six decades of Volvo heritage and expertise built in. You also get an ideal partner that's able to take on a range of applications, and a powerful performer whose efficient new engine - built with proven Volvo technology can reduce fuel consumption by up to 25% without compromising machine performance.

Regeneration system

Standard regeneration process is fully automatic and does not require any operator's intervention. It does not influence machine's performance or productivity. For increased safety, the regeneration can be aborted or performed at parked conditions when needed.



DPF exchange program

Our backhoe loaders are offered with Volvo's long-life diesel particulate filters (DPF). When your DPF needs external cleaning, Volvo's DPF exchange program keeps downtime - and cost - to a minimum. Part of Volvo's Reman Exchange Service, the DPF exchange program provides rigorously tested, high-performing filters that offer at least 95% of the capacity of brand new filters - but at a fraction of the price.

Auto-idle

With the new auto-idle feature, engine speed reduces to idle when controls are inactive for a specified time, reducing fuel consumption and noise level on site. Auto-idle comes standard on the BL70B and as an option on the BL60B.



Built for extreme conditions

We have considerably enhanced the cooling capacity of our engines to allow the BL60B and BL70B to work in higher ambient temperatures with significantly lower engine noise. Built-in barometric detection automatically adjusts machine behavior depending on altitude. A cold climate preparation kit assures machine availability, even in subzero conditions.



New Tier 4i engine

For ultimate efficiency and performance, the BL60B and BL70B come equipped with Volvo's new range of Stage IIIB/Tier 4 Interim 3.8l / 232cu in diesel engines, which feature common rail direct injection system, fixed turbo and intercooler, for even greater power, better torque response and significantly higher fuel efficiency than previous engine generation. To meet emissions standards, our machines are equipped with a diesel particulate filter (DPF), a cooled exhaust gas recirculation (CEGR) unit and diesel oxidation catalyst (DOC). Each of these features helps reduce particulate matter by 95% and NOx emissions by 24%, no matter the temperature, humidity or altitude.



Intelligent hydraulics

A new electronically controlled hydraulic pump ensures that hydraulic power is constantly adapted to engine and working conditions. Pump settings are continually configured to optimize hydraulic output and fuel efficiency.

BL70B: intelligent, intuitive hydraulics.

When the job demands a machine that offers class-leading productivity and performance, there's the BL70B. Versatile, powerful and robust, the BL70B is equipped with intelligent hydraulics that automatically adjusts hydraulic power to the task at hand and ergonomic controls that make operation easier and more intuitive. Hydraulic flow can be adjusted from the cab, and Eco modes make operation even more fuel efficient without loss in power.

Eco modes

The BL70B features three excavator work modes. Standard mode keeps the machine operating at full power. Eco mode reduces fuel consumption by up to 10%, while maintaining machine efficiency. Fine mode provides increased precision in demanding applications, like craning.



Hydraulic flow adjustment

Auxiliary hydraulic flow adjustment can be set from the comfort of the cab. Flow to attachments, such as multi-purpose buckets or hydraulic thumbs, can then be controlled with better precision and accuracy.



Volvo-exclusive loader pilot controls

The BL70B includes a Volvo-patented single-handed, multifunctional, pilot-controlled loader joystick with features like auto kick-down (comes along with powershift transmission), transmission declutch and multipurpose bucket control. Volvo also offers a unique solution that combines loader control with machine direction change for better ergonomics and greater efficiency in loading operations.



Sweeper- or snow blower-ready

The BL70B's multipurpose hydraulics makes it easy to fit attachments such as sweepers or snow blowers without the need for additional hydraulic lines. Flow can be adjusted using a roller on the loader pilot control lever. Continuous flow to the attachment may be activated by pressing a button on the right-hand panel.

BL60B: simplicity and strength.

With a robust structure designed to withstand years of hard work on tough job sites, the BL60B is the ideal choice for customers. Its simple, robust hydraulic system, easily manages simultaneous excavator operations, and its powerful single-tilt loader linkage provides optimum lift and high breakout forces. Even though it's a straightforward machine, the BL60B is an all-around high performer - made to work hard and built to last.

Front bumpers

The BL60B and BL70B now come standard with rubber side bumpers to better protect the front of the machine during truck loading. An additional rubber bumper for the front counterweight is also available as an option.



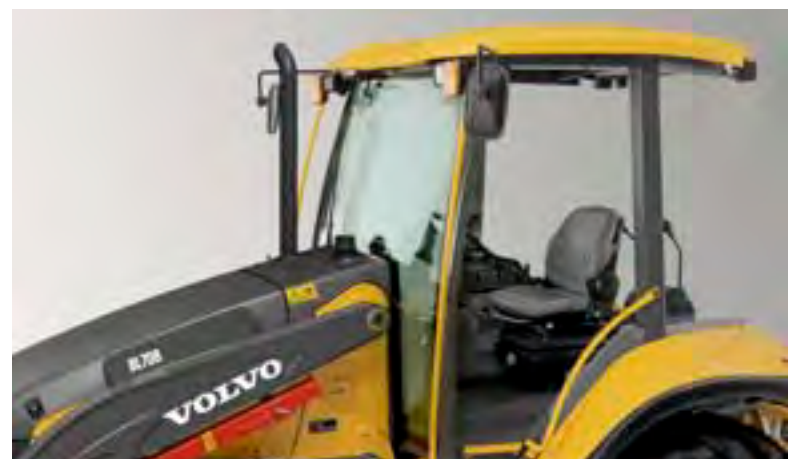
Differential lock and rear fender design

The differential lock, engaged via a foot switch, operates on the rear axle, providing maximum rear wheel grip on slippery ground. Rear fenders limit mud or debris being thrown onto the cab windows. Black rubberized fender extension strips can be easily replaced if damaged.



Single-tilt loader linkage

The self-leveling, single-tilt cylinder provides the durability and power of a dual linkage system with the improved visibility of front attachments. Powerful lift and high breakout force augment loader applications. Fewer pivot points mean less time is spent on weekly maintenance.



Cab and canopy

The BL60B comes with a choice of two canopies or a cab — all ROPS/FOPS-certified to provide the highest level of safety. Choose the level of comfort that best suits you — from a durable canopy to a premium cab with lots of storages, radio with MP3 connector or air conditioning.



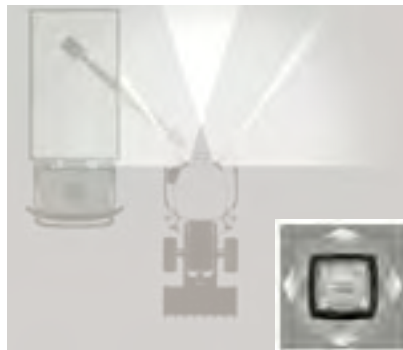
Simple, robust hydraulics

The BL60B is equipped with a fixed-displacement hydraulic gear pump and a flow-sharing valve for a simple but robust hydraulic system. Machine hydraulics automatically manages oil distribution between excavator functions, ensuring smooth and easy operation of multi-functions allowing the operator to operate with precision and faster cycle time.



Volvo Cab

Take command with all-day ergonomic comfort features such as multi-adjustable seat, steering column and ergonomically placed controls. Increased interior space, cab ventilation through 13 vents and an air conditioning (AC) option provide an operator-friendly environment. Excellent through large windows, narrow pillars and a sloping hood.



Cab work lights

Work lights mounted on the roof of the cab are highly adjustable, enabling the complete illumination of the worksite.



Your space. Your Command Center.

The next-generation Volvo backhoe is here. Step into the redesigned, roomier cab and raise your productivity with durable, high-performance equipment. Volvo is known as the market leader in comfort and the cab is now better than ever with ample amounts of personal storage space. The ergonomic layout, controls and instruments put you in command. With large glass areas, all-around visibility has been enhanced, improving safety and productivity.

AC cooled compartment

When equipped with air conditioning (AC), a large compartment below the steering column is cooled, providing convenient storage for beverages and food.



Adjustable steering column

The optional Deluxe Cab features a steering wheel with both tilt and telescopic adjustments, permitting changes to fit any operator's preferences.



Cab dome light

When opening the left hand side cab door, the entrance is illuminated by a large, automatic dome light, providing safe entry and exit.



Spacious seat legroom

The cab features more room around the seat, making turning and position change from loader to excavator quicker and easier. More room between the seat and cab side. More legroom around the excavator controls.

Maintain your uptime.

Do your maintenance quickly with filters and grouped service points that are easy to see and reach from ground level. A large tool box also features an innovative design for even more storage, access and security.

Tool box

The tool / battery box is integrated into the left hand side cab steps. The wide and ample storage space, accessed and maintained in a safely-open position, allows for large objects to be stored safely outside of the cab. Can be locked with the machine key or personal padlock.



Fuse box access

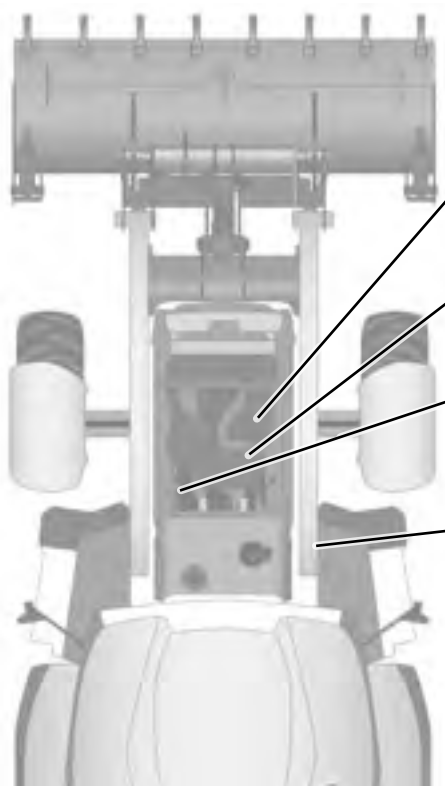
The fuse box is located within the cab, for protection from dirt and moisture. Fuses can be easily and quickly accessed from behind a detachable access panel.



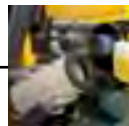
CareTrack*

CareTrack is a Volvo telematic system that can give you the machine information needed for better planning and smarter working; such as daily usage reports, location reports and service maintenance reminders..

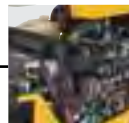
* In markets where CareTrack is available



Coolant expansion tank is easily accessible for quick, daily maintenance checks.



Accessible from ground level, the large, dual-element air filter is positioned above the engine.



All filling points regrouped on right hand side of the machine.



Major components are equipped with quick and easy release-type drain plugs.



Maintenance access

Save time with a one-piece tilting hood and grouped service and check points that are easily visible and accessible from ground level. Long greasing intervals for more uptime and lower operating costs.

Loaded at both ends.



Spacious cab

Redesigned, roomier cab provides more space overhead and around the seat, with ample legroom and personal storage space.

Visibility

Large glass areas on all sides provide excellent, all-around visibility for more safety and faster work.



Serviceability

Easy, ground-level servicing with fewer greasing points enables fast daily maintenance.



Loader performance

High breakout forces delivered through a very durable loader linkage and powerful hydraulics.

Robust reliability

High-strength construction throughout the entire machine – from the heavy steel frame to the durable, high quality components.

Large tool box

Integrated in the cab steps to provide plenty of easily accessible storage for tools and batteries.

Differential lock

Engaged by foot switch, locking the rear differential to provide maximum grip in wet and slippery conditions.





Stylish design and high residual value

Stylish, modern design and quality materials ensures low owning costs, pride of ownership and higher resale value.



Backhoe performance

Precision control and powerful performance derived from a harmony of design, linkage, engine and hydraulic system.



Flow-sharing hydraulics

Maintain pressure and flow for multi-functional control along with flow adjustment for precision attachment control.



CareTrack*

CareTrack enables usage monitoring, geographical tracking and service reminders, for improved machine management.

Versatility

Combined auxiliary line (double / single acting) for powerful control of a wide range of attachments – from breakers to thumbs and more.

* In markets where CareTrack is available

Versatile performer.

You have a wide range of jobs to do and the Volvo backhoe loader is the versatile performer that gives you the capability to handle a job from start to finish. Use a set of pallet forks for material handling. Break up pavement with a hydraulic breaker and remove the debris with a heavy-duty bucket. Excavate a trench, then lift and crane heavy pipe into place. Use a multi-purpose bucket to fill the opening with soil and perform landscape finishing. All this and more. One machine. One solution: your Volvo backhoe loader.



Hydraulic Quick Coupler

The Volvo Hydraulic Quick Coupler allows pin on interface attachments that can be connected and disconnected in standard position or face mode position. The coupler is designed not only for an excellent fit with Volvo backhoe loaders but is in line with the latest safety regulations. A mechanical Quick Coupler is also available.



Hydraulic Loader Attachment Bracket

Volvo TPV hydraulic attachment bracket allows easy and fast attachments interchangeability. The attachment bracket with hydraulic locking pins is rugged and easy to operate. Precision fit and quality engineering with large, rounded hooks make it easy to guide the attachment into the bracket.



Volvo Tooth System

The Volvo patented vertical locking device makes mounting and removing fast and easy.





Adding value to your business.

Being a Volvo customer means having a complete set of services at your fingertips. Volvo can offer you a long-term partnership, protect your revenue and provide a full range of customer solutions using high quality parts, delivered by passionate people. Volvo is committed to increasing the positive return on your investment and maximising uptime.



Customer Support Agreements

The range of Customer Support Agreements offer preventive maintenance, total repairs and a number of

uptime services. Volvo uses the latest technology to monitor machine operation and status, giving you advice to increase your profitability. By having a Customer Support Agreement you are in control of your service costs.



Genuine Volvo Parts

Our attention to detail is what makes us stand out. This proven concept acts as a solid investment in your machine's future. Parts are extensively tested and approved because every part is vital for uptime and performance. Only by using Genuine Volvo Parts, can you be sure that your machine retains the renowned Volvo quality.



Service Network

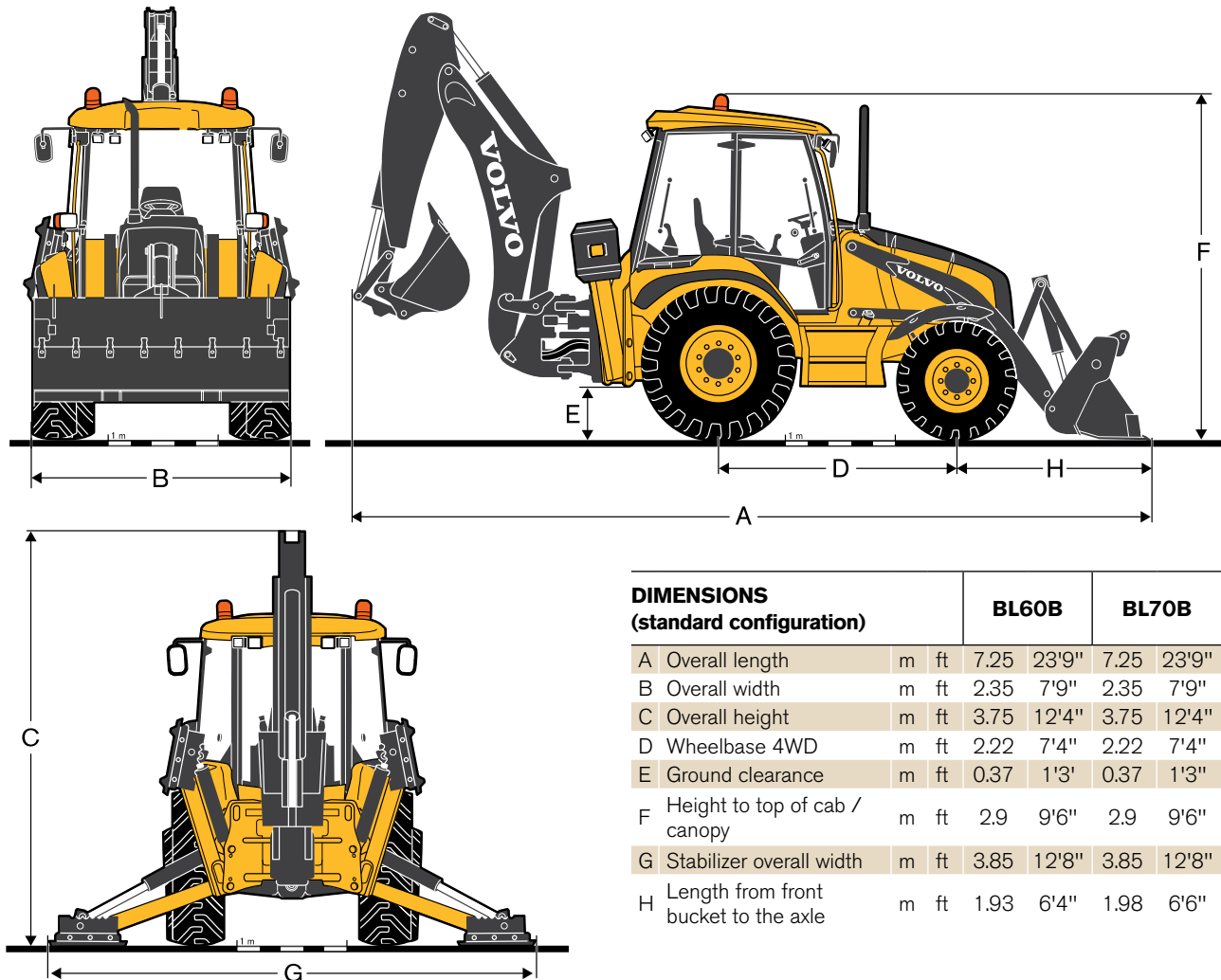
In order to respond to your needs faster, a Volvo expert is on the way to your job site from one of our Volvo facilities. With our extensive infrastructure of technicians, workshops and dealers, Volvo has a comprehensive network to fully support you using local knowledge and global experience.



Complete Solutions

Volvo has the right solution for you. So why not let us provide all your needs throughout the whole life cycle of your machine? By listening to your requirements, we can reduce your total cost of ownership and increase your revenue.

Specifications.



DIMENSIONS (standard configuration)			BL60B		BL70B	
A	Overall length	m ft	7.25	23'9"	7.25	23'9"
B	Overall width	m ft	2.35	7'9"	2.35	7'9"
C	Overall height	m ft	3.75	12'4"	3.75	12'4"
D	Wheelbase 4WD	m ft	2.22	7'4"	2.22	7'4"
E	Ground clearance	m ft	0.37	1'3"	0.37	1'3"
F	Height to top of cab / canopy	m ft	2.9	9'6"	2.9	9'6"
G	Stabilizer overall width	m ft	3.85	12'8"	3.85	12'8"
H	Length from front bucket to the axle	m ft	1.93	6'4"	1.98	6'6"

Loader buckets

	Width		Weight		Capacity	
	mm	in	kg	lb	m ³	cu yd
General Purpose bucket (direct fit)	2 250	7'5"	345	761	0.8	1.0
	2 350	7'9"	475	1,047	1	1.3
General Purpose with fork retention bracket (direct fit)	2 350	7'9"	490	1,080	1	1.3
General Purpose bucket (Volvo attachment bracket / TPV)	2 350	7'9"	460	1,014	1	1.3
Multi Purpose bucket (direct fit)	2 350	7'9"	790	1,742	1	1.3
Multi Purpose bucket (Volvo attachment bracket / TPV)	3 350	7'9"	750	1,653	1	1.3

Excavator buckets

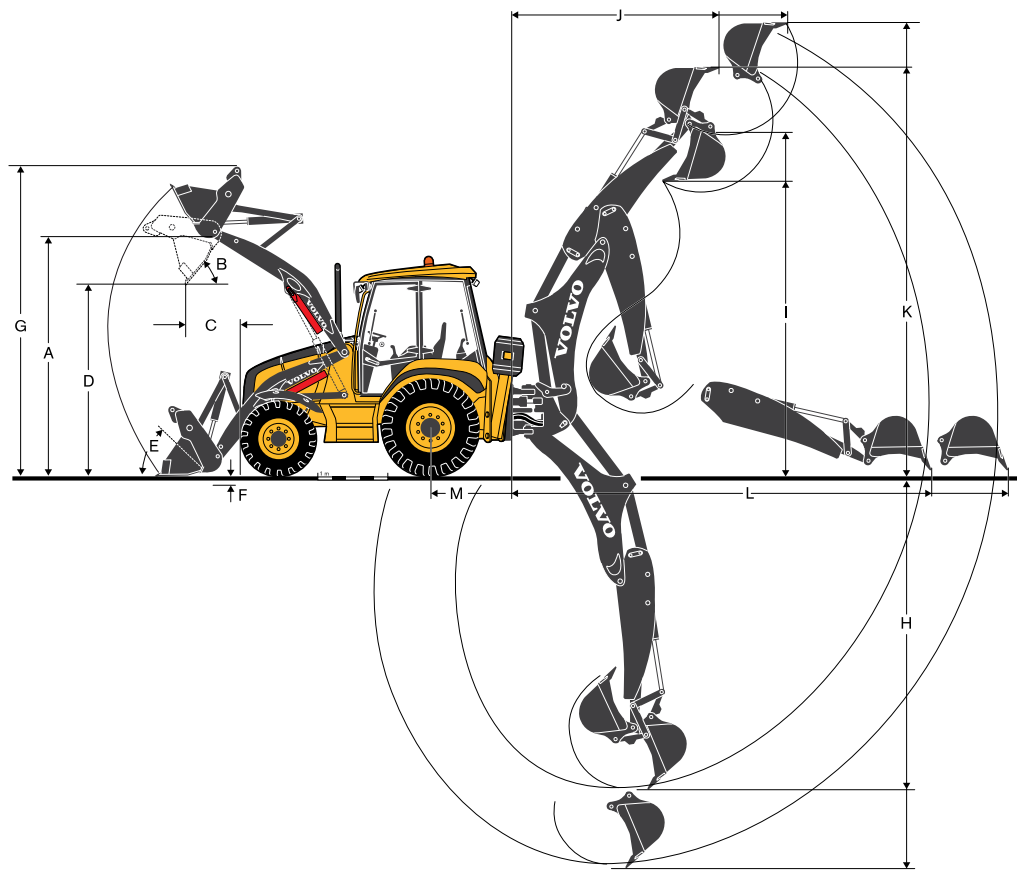
	Width		Weight		Capacity		Nbr. Teeth
	mm	in	kg	lb	m ³	cu yd	
Standard Duty backhoe bucket	310	12"	97	214	0.08	0.11	3
	410	16"	105	232	0.11	0.14	3
	450	18"	115	254	0.13	0.17	4
	625	25"	130	287	0.19	0.25	4
	925	36"	137	368	0.29	0.38	5
Heavy Duty backhoe bucket	310	12"	125	276	0.09	0.11	3
	465	18"	147	324	0.14	0.18	4
	625	25"	174	384	0.2	0.26	5
	765	30"	198	437	0.33	0.34	6
	925	36"	222	489	0.33	0.42	6
Fixed ditching backhoe bucket	1 200	47"	135	298	0.17	0.22	0

Specifications.

				BL60B		BL70B		
Engine								
Low-emission, 4 cylinders, 3.8l / 232cu in Volvo diesel engine conforming to EPA Tier 4i and Stage IIIB regulations, thanks to common rail, turbocharger, charge air cooler, cooled exhaust gas recirculation, diesel oxidation catalyst and cleanable diesel particulate filter.								
Model			Volvo D3.8H			Volvo D3.8H		
Compression ratio			17.5:1			17.5:1		
Bore x Stroke		mm	"	100 x 120	3,94 x 4.72	100 x 120	3,94 x 4.72	
Rated speed		rpm		2 200				
Net power (SAE J1349 / ISO 9249 / DIN 6271) at rated engine speed			kW	hp	68	91	68 76	91 101
Gross power SAE J1995 at rated engine speed			kW	hp	70.2	94	78.6	105
Maximum torque at 1500 rpm (SAE J1995) - Nm			Nm		375			
Weight								
Operating weight min / max			kg	lb	7 070/ 9 230	15,587/ 20,349	7 910/ 10 000	17,439/ 22,046
Hydraulic system								
Fix flow, open centre, gear pump				•		-		
Variable flow, closed centre, load sensing				-		•		
Max. flow		l/min	us gal/min	112	30	163	44	
Working pressure excavator		bar	psi	250	3,626	250	3,626	
Working pressure loader		bar	psi	220	3,191	250	3,626	
Flow sharing				•		•		
Drivetrain								
Front axle								
Load rating - dynamic (*Heavy Duty axle)			kg	lb	7 138	15,737		
Load rating - static (*Heavy Duty axle)			kg	lb	9 687*	21,356*	9 687*	21,356*
			kg	lb	17 845	39,341		
			kg	lb	24 218*	53,391*	24 218	53,391
Max oscillation at wheel				°		16		
Rear axle								
Load rating - dynamic			kg	lb	7 648	16,861	7 648	16,861
Load rating - static			kg	lb	19 120	42,152	19 120	42,152
Differential locking (electro hydraulic control)				%		100		
Steering								
Hydrostatic load sensing steering with protected double acting single cylinder behind the front axle with remote grease fitting for axle pivot pin.								
Steering angle				°		55		
Turns to lock						4		
Axle oscillation (on each side)			°		16 (8)		16 (8)	
Turning radius between curbs 4WD with brakes/without brakes			m	ft	3.3/4.6	10'9/15'1	3,3/4,1	10'9/13'5
Turning radius between walls 4WD with brakes/without brakes			m	ft	4.9/5.8	16'1/19'0	4,9/5,9	16'1/19'4
Transmission								
Four forward and reverse fully synchronized gears. Powershuttle mechanical or powershift electro-hydraulic with fully automatic mode on 4th gear. Electro-hydraulic forward/reverse lever on steering column (switch on loader pilot control BL70B).								
Travel speed								
Powershuttle								
1st gear			km/h mph	5.5	3.4	5.2	3.2	
2nd gear			km/h mph	8.8	5.5	8.4	5.2	
3rd gear			km/h mph	17.7	11	17	10.6	
4th gear			km/h mph	35.4	22	34	21.1	
Powershift								
1st gear			km/h mph	5.6	3.5	5.3	3.3	
2nd gear			km/h mph	9.1	5.6	8.7	5.4	
3rd gear			km/h mph	18.3	11.4	17.6	10.9	
4th gear			km/h mph	34.7	21.6	33.3	20.7	

				BL60B		BL70B	
Brakes							
Service brakes type: 2 disk-plates per side, oil-immersed, servo power-assisted, self adjusting outboard disk brakes. Parking brake type: External disk on input shaft.							
Electrical system							
STD 12 V. weatherproof connections, 750 CCA battery, w/ dual battery option, STD 115-amp alternator (charging voltage: 13.8 V)							
Service fill capacities							
Fuel system	l	us gal	150	40	150	40	
Hydraulic system	l	us gal	140	37	140	37	
Cooling system	l	us gal	20	5.3	20	5.3	
Hydraulic reservoir	l	us gal	48	12.6	48	12.6	
Engine oil (including filter)	l	us gal	13.2	3.49	13.2	3.49	
Front axle oil capacity (including differential and hubs)	l	us gal	8.1	2.1	8.1	2.1	
Rear axle oil capacity (including differential and hubs)	l	us gal	14.5	3.8	14.5	3.8	
Transmission oil capacity							
Power shuttle	l	us gal	21	5.5	21	5.5	
Power shift			21.5	5.7	21.5	5.7	
A/C system capacity	kg	lb	1.6	3.5	1.6	3.5	
A/C performance			6.15	21,000	6.15	21,000	
Heater performance	kW	BTUs	12	40,900	12	40,900	
Backhoe performance							
Narrow and curved excavator boom has a closed box-welded construction with fewer components and welds to guarantee a superior strength, includes a switch activated boom lock and manual swing locking pin. The kingpost is composed of cast iron to allow flexible movement and swing. Extendible arm increases the reach by 1 m. Weekly (50-hour) greasing interval.							
Standard arm							
Bucket width	mm	in	625	25	625	25	
Bucket capacity	m ³	cu yd	0.19	0.25	0.19	0.25	
Bucket breakout force ISO / SAE J1179	kN	lbf	55.7 / 50	12,522 / 11,240	62.4 / 56	14,028 / 12,589	
Arm tearout force SAE J1179	kN	lbf	33	7	38.8	8,722	
Bucket rotation	°		205				
Extendible arm							
Bucket width	mm	in	625	25	625	25	
Bucket capacity	m ³	cu yd	0.19	0.25	0.19	0.25	
Bucket breakout force retracted or extended ISO / SAE J1179	kN	lbf	55.7 / 50	12,522 / 11,240	62.4 / 56	14,028 / 12,589	
Arm tearout force retracted / extended SAE J1179	kN	lbf	32.6 / 24.3	7,329 / 5,463	38.8 / 28.9	8,722 / 6,497	
Bucket rotation	°		205				
Loader performance							
Volvo patented loader linkage features a single cylinder and is self leveling with float and return-to-dig. Loader is box weld constructed with large diameter cross member and friction welded dual lift cylinders. Weekly (50-hour) greasing interval.							
Lift capacity at full height							
GP Bucket, pin on, 1 cu ya (0.8 m ³)	kg	lb	3 020	6,658	–	–	
GP/MP Bucket, pin on, 1.3 cu ya (1 m ³)	kg	lb	2 830 / 2 630	6,239 / 5,798	3 320 / 3 130	7,319 / 6,900	
Bucket breakout force							
GP Bucket, pin on, 1 cu ya (0.8 m ³)	kN	lbf	52	11.69	–	–	
GP/MP Bucket, pin on, 1.3 cu ya (1 m ³)	kN	lbf	45.3 / 43.7	10,184 / 9,824	57.1 / 55.5	12,837 / 12,477	
Loader arm breakout force							
GP Bucket, pin on, 1 cu ya (0.8 m ³)	kN	lbf	51.7	11.623	–	–	
GP/MP Bucket, pin on, 1.3 cu ya (1 m ³)	kN	lbf	8.5 / 45.5	10,903 / 10,229	55.4 / 52.9	12,454 / 11,892	
Tires (Standard)							
Front 4WD			12Lx16.5, 10PR		12.5/80-18, 14PR		
Rear			19.5Lx24, 10PR		19.5Lx24, 10PR		
Noise level							
Inside cab		dB(A)		75			
Outside cab		dB(A)		102			

Specifications.



Loader dimensions		BL60B		BL70B	
A	Height to loader hinge pin	m	ft	3.35	11'
B	Dump angle (GP bucket, pin on)		°	51	49
C	Dump reach at 45° (GP bucket, pin on)	m	ft	1.03	3'5"
D	Dump height at 45° (GP bucket, pin on)	m	ft	2.78	9'1"
E	Bucket rollback at ground level (GP bucket, pin on)		°	46	45
F	Maximum digging depth (GP bucket, pin on)	m	ft	0.29	0'11"
G	Maximum operating height (GP bucket, pin on)	m	ft	4.1	13'6"
	Max. grading angle (GP bucket, pin on)		°	117	115

Backhoe dimension - Standard arm*		BL60B		BL70B	
H	Maximum digging depth (SAE)	m	ft	4.45	14'7"
	Digging depth SAE 2 ft (0.61 m) flat bottom	m	ft	4.43	14'6"
	Digging depth SAE 8 ft (2.44 m) flat bottom	m	ft	4.11	13'6"
I	Loading clearance	m	ft	3.72	12'2"
J	Loading reach at maximum height	m	ft	2.51	8'3"
K	Operating height	m	ft	5.81	19'1"
L	Reach from swing post at ground level	m	ft	6.03	19'11"
M	Reach from rear axle	m	ft	7.17	23'6"

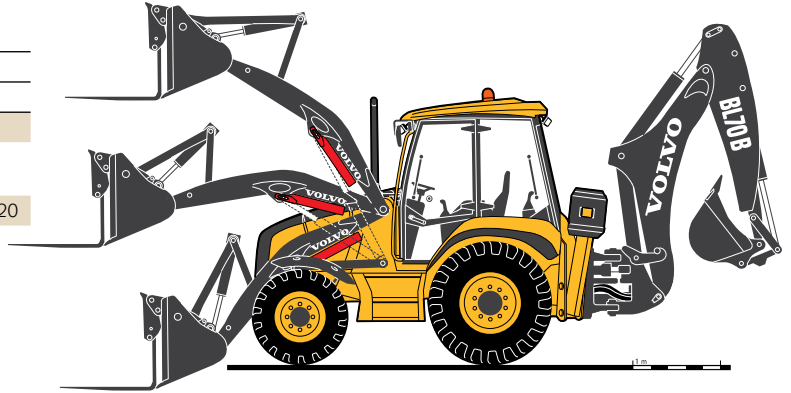
Backhoe dimension - Extendible arm*		BL60B		BL70B	
H	Maximum digging depth (SAE) Ret	m	ft	4.45	14'7"
	Maximum digging depth (SAE) Ext	m	ft	5.52	18'1"
	Digging depth SAE 2 ft (0.61 m) flat bottom Ret	m	ft	4.43	14'6"
	Digging depth SAE 2 ft (0.61 m) flat bottom Ext	m	ft	5.49	18'0"
	Digging depth SAE 8 ft (2.44 m) flat bottom Ret	m	ft	4.11	13'6"
	Digging depth SAE 8 ft (2.44 m) flat bottom Ext	m	ft	5.23	17'2"
I	Loading clearance Ret	m	ft	3.72	12'3"
	Loading clearance Ext	m	ft	4.36	14'3"
J	Loading reach at maximum height Ret	m	ft	2.5	8'2"
	Loading reach at maximum height Ext	m	ft	3.36	11'0"
K	Operating height Ret	m	ft	5.82	19'1"
	Operating height Ext	m	ft	6.45	21'2"
L	Reach from swing post at ground level Ret	m	ft	6.03	19'9"
	Reach from swing post at ground level Ext	m	ft	7.0	23'0"
M	Reach from rear axle Ret	m	ft	7.17	23'6"
	Reach from rear axle Ext	m	ft	8.14	26'9"
	Swing torque	kN.m	lbf.ft	26	19.177

* with Quick coupler

Loader lift capacity.

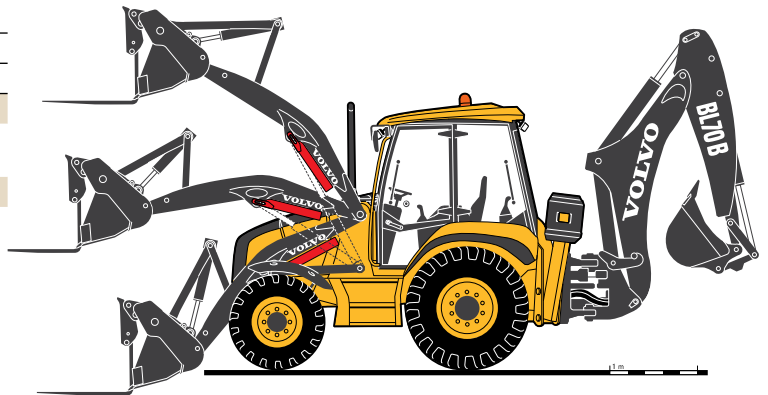
Operating Specifications with flip-over forks on a GP bucket*

		BL60B		BL70B	
Fork Tine Length	mm in	1 070	42		
Load centre of gravity position (according to ISO 2330)	mm in	500	1'8"		
Operating load	kg lb	1480	3,260	1 780	3,920



Operating Specifications with flip-over forks on a MP bucket*

		BL60B		BL70B	
Fork Tine Length	mm in	1 070	42		
Load centre of gravity position (according to ISO 2330)	mm in	500	1'8"		
Operating load	kg lb	1 340	2,950	1 640	3,620



Operating Specifications with pallet-forks on loader attachment bracket

		BL60B		BL70B	
Fork Tine Length	mm in	1 070	42		
Load centre of gravity position (according to ISO 2330)	mm in	500	1'8"		
Operating load	kg lb	2 280	5,030	2 670	5,890

* According ISO 14397-1;SAE J732 standard dipper equipped with 300 mm bucket, canopy



Cycle times w/ GP Bucket

Loader Cycle Times w/ GP bucket		BL60B	BL70B
Raise to full height	sec	4.1	4.6
Dump time	sec	1.9	1.8
Curl time	sec	2.4	2.3
Lower	sec	3.4	3.1

Backhoe lift capacity BL60B.

Lift capacity figures comply with SAE J31.

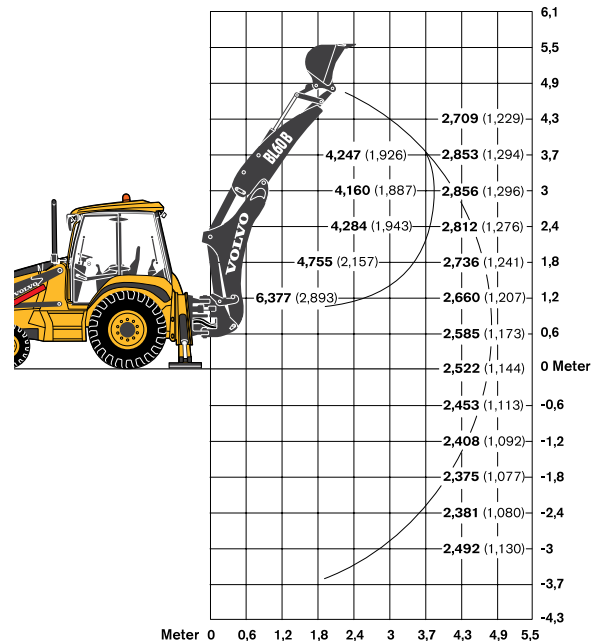
All figures are stated in pounds (kilograms).

The large arc indicates boom-lift.

The small arc indicates dipper-lift with the boom at 63 degrees.

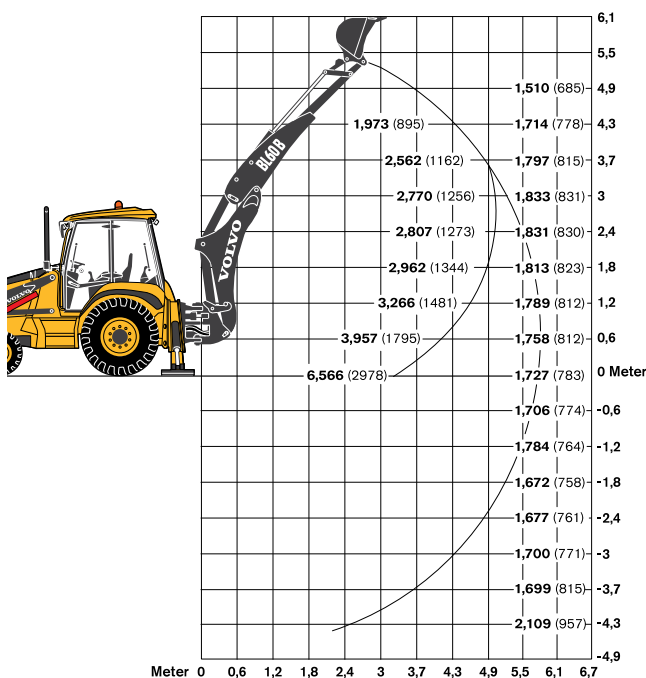
BL60B Backhoe with Standard Dipper

Equipped with 610 mm / 24" heavy-duty backhoe bucket, 1m³ / 1.3 cu. yd. heavy-duty loader bucket, 11-16 SL front tires, 19.5L-24 rear tires



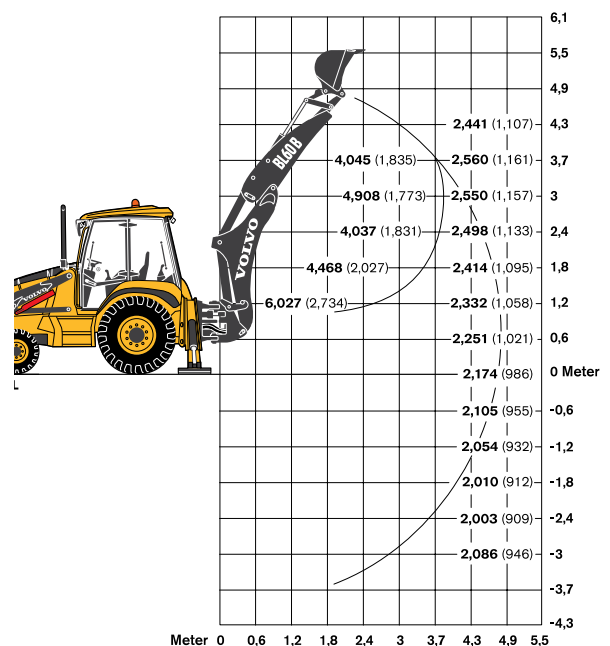
BL60B Backhoe with Extendible Dipper, Extended

Equipped with 610 mm / 24" heavy-duty backhoe bucket, 1m³ / 1.3 cu. yd. heavy-duty loader bucket, 11-16 SL front tires, 19.5L-24 rear tires



BL60 Backhoe with Extendible Dipper, Retracted

Equipped with 610 mm / 24" heavy-duty backhoe bucket, 1m³ / 1.3 cu. yd. heavy-duty loader bucket, 11-16 SL front tires, 19.5L-24 rear tires



Backhoe lift capacity BL70B.

Lift capacity figures comply with SAE J31.

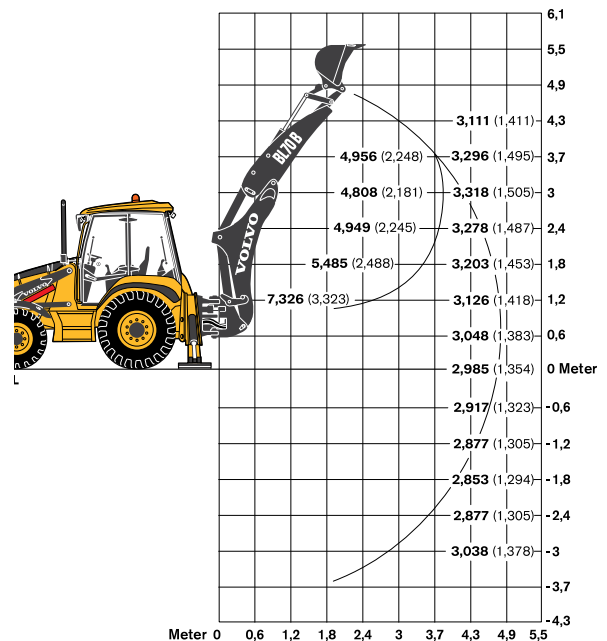
All figures are stated in pounds (kilograms).

The large arc indicates boom-lift.

The small arc indicates dipper-lift with the boom at 63 degrees.

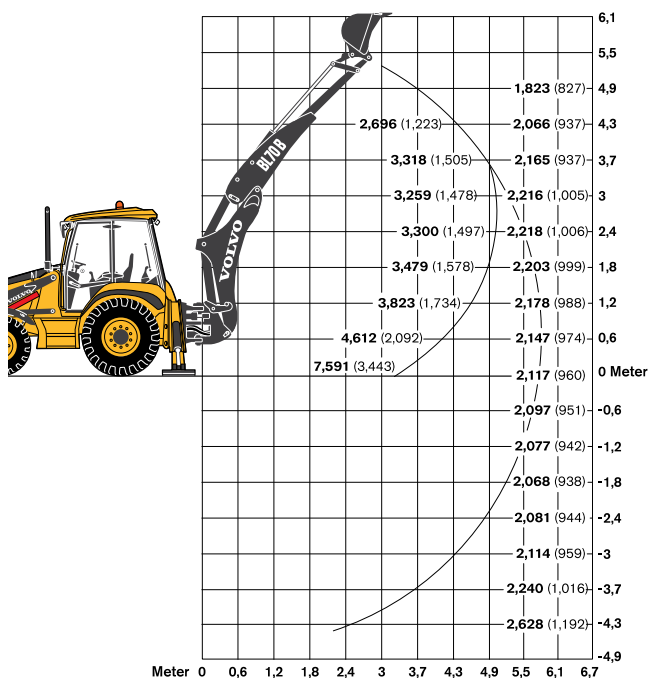
BL70B Backhoe with Standard Dipper

Equipped with 610 mm / 24" heavy-duty backhoe bucket, 1m³ / 1.3 cu. yd. heavy-duty loader bucket, 12.5/80x18 front tires, 19.5L-24 rear tires



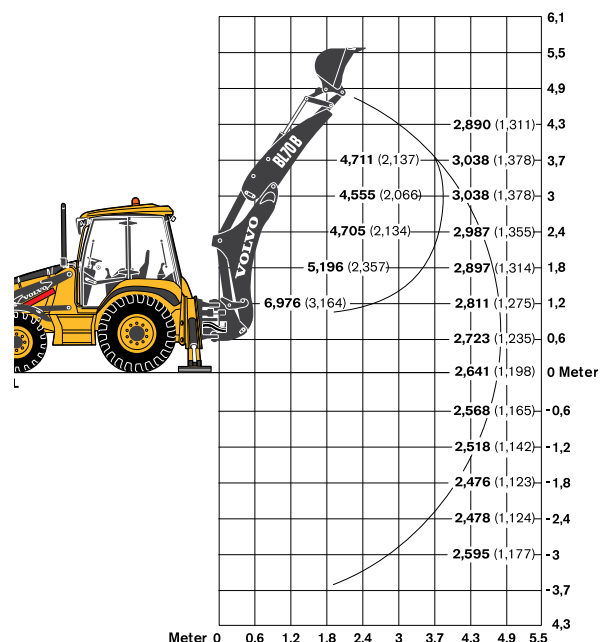
BL70B Backhoe with Extendible Dipper, Extended

Equipped with 610 mm / 24" heavy-duty backhoe bucket, 1m³ / 1.3 cu. yd. heavy-duty loader bucket, 12.5/80x18 front tires, 19.5L-24 rear tires



BL70B Backhoe with Extendible Dipper, Retracted

Equipped with 610 mm / 24" heavy-duty backhoe bucket, 1m³ / 1.3 cu. yd. heavy-duty loader bucket, 12.5/80x18 front tires, 19.5L-24 rear tires



Equipment.

STANDARD AND OPTIONAL EQUIPMENT

• = Standard
° = Option

	BL60B	BL70B
Engine		
Volvo 3.8H turbocharged diesel	•	•
91 hp SAE Net (68kW) / SAE Gross 94 hp (70.2kW)	•	
101 hp SAE Net (76kW) / SAE Gross 105 hp (78.6kW)	°	•
Meets EPA Tier 4i / EU Stage 3B compliance requirements	•	•
Engine fan guard	•	•
Ground line fuel fill with 150 liter / 40 gallons capacity	•	•
Tilting cooler	•	•
Flip-open, rear-tilting, one-piece engine hood for ease of service	•	•
Cyclonic pre-filter	°	°
Electrical System		
Battery, 750 CCA	•	•
Battery, additional	°	°
Hydraulic System		
Hydraulic oil cooler	•	•
Lockable hydraulic tank cap	•	•
Detent function for front auxiliaries		•
Hydraulic breaker circuit	°	°
Backhoe auxiliary bi-directional hydraulics combined with single acting	°	°
Driveline		
Four wheel drive	•	•
Front axle with 16.5" tyres	•	
Front axle with 18" tyres	°	•
Rear axle 100% differential lock	•	•
Fast reversing shuttle, all gears	•	•
Torque convertor	•	•
Four-speed powershuttle transmission	•	•
Forward / Reverse / Neutral and transmission de-clutch buttons on loader joystick		•
Transmission de-clutch button on loader mechanical control	•	
Brake pedals operable either independently or interlocked	•	•
4WD assist braking above 20 km/h / 12.5 mph	•	•
Power steering	•	•
Tires - Bias	•	•
Tires - Radial		°
Throttles, hand and foot	•	•
Speedometer	•	•
Fully automatic powershift transmission (with kick-down button on loader joystick on BL70B)	°	°
Drive shaft guard	°	°
Front fenders	°	°
Boom suspension system	°	°
Loader		
Arms with dual lift cylinders and single, center-mounted dump cylinder	•	•
Pilot control joystick		•
Mechanical control levers	•	
Hydro-mechanical self-leveling system, loader arm float and bucket return-to-dig		•
Mechanical self-leveling system, loader arm float and bucket return-to-dig	•	
Backhoe		
Center mount backhoe excavator	•	•
2 mechanical levers ISO or SAE	•	•
Pilot controls SAE or ISO with joystick pattern changeable by electric switch inside the cab		°
Excavator working modes (standard/eco/fine)		•
Engine automatic idling	°	•

	BL60B	BL70B
Backhoe		
Electro-hydraulic boom transport lock	•	•
Swing transport lock	•	•
Standard arm	•	°
Extendible arm	°	•
Lifting eye	°	°
No lifting eye	°	°
Cab (ROPS / FOPS level 2)		
Refer to Cab configuration matrix	•	•
Service and Maintenance		
Gauges:		
Coolant temperature	•	•
Fuel level	•	•
Hour recorder	•	•
Warning and control lamps:		
Engine preheating element	•	•
High engine coolant temperature	•	•
Low engine oil pressure	•	•
Engine air filter clogged	•	•
High transmission oil temperature	•	•
Service indicator	•	•
Battery charging	•	•
Hydraulic oil filter clogged	•	•
High hydraulic oil temperature	•	•
Low hydraulic oil temperature	•	•
Seat belt not fasten	•	•
Water in fuel	•	•
Low fuel level	•	•
Regeneration	•	•
High exhaust temperature	•	•
Others		
50-hour greasing intervals	•	•
Horn front and rear	•	•
Reversing alarm	•	•
Warning buzzer	•	•
Large, external tool box	•	•
Front grill with side rubber bumpers	•	•
Rubber bumper on front counterweight	°	°
Integrated safety strut	•	•
Stabilizer street pads	°	°
Flipover stabilizer pads	°	°
Stabilizer guard	°	°
King post hose guard	°	°
Cold climate preparation (including VG32 oil, double battery, 120V engine pre heater)	°	°
Backhoe Attachments		
Hydraulic Quick Coupler	°	°
Mechanical Quick Coupler	°	°
General Purpose buckets Standard Duty	°	°
General Purpose buckets Heavy Duty	°	°
Fixed ditching buckets	°	°
Tiltable ditching bucket	°	°
Hydraulic thumb	°	°
Hydraulic breaker	°	°
Loader Attachments		
Hydraulic Loader Attachment Bracket	°	°
General Purpose loader buckets	°	°
Multi Purpose loader buckets	°	°
Flip-over forks for General or Multi Purposes loader buckets	°	°
Fork kit for Loader Attachment Bracket	°	°

BL60B/BL70B CAB CONFIGURATION

	Canopy	Cab
	Standard BL43003	Basic BL40004
	Standard BL45005	Deluxe* BL40006
• = Standard		
◦ = Option		

Doors and windows

Doors with fixed window(s), includes plastic door trim			•	
Doors with openable windows, includes plastic door trim				•
Front windshield and wiper	◦	•	•	•
Opening rear side windows			•	•
One-piece opening rear window and wiper			•	•
All tinted glass	◦	•	•	•

Roof

Plastic Roof	•	•	•	•
Headliner			•	•
Power socket x 2 – External Rotating beacon switch	•	•	•	•

Seat

Seat - Std (vinyl, mechanically suspended)	•	•		
Seat - Comfort (fabric, air suspended and heated)			•	•
Arm rest	◦	◦		
Back rest			◦	•
Seat belt -(2")	•	•	•	•
Seat belt - Wide (3")	◦	◦	◦	◦

Steering column

Fixed steering column	◦	◦		
Tilt steering column	◦	◦	•	
Tilt and telescopic steering column				•
Steering wheel knob	◦	◦	◦	◦

Visibility

Sun visor		•	•	•
Interior rearview mirror	•	•	•	•
External rearview mirrors	•	•	•	•
Rear work lights x 2 (outer position)	•	•	•	•
Front work lights x 2 (outer position)	•	•	•	•
Additional lights x 4 (inner position)	◦	◦	•	•
Dome light			•	•

Safety

Anti theft*	◦	◦	◦	◦
Vandal guard	•	•		
Support for fire extinguisher	◦	◦	◦	◦
Support bracket for first aid kit (aid kit not provided)	◦	◦	◦	◦
Caretrack GSM	◦	◦	◦	◦
Caretrack Satellite	◦	◦	◦	◦

Other

Coat hook	•	•	•	•
Mobile phone support	•	•	•	•
Left hand storage open	•	•		
Left hand storage with lid		•	•	•
Front right hand side storage lockable	•	•	•	•
Air conditioning with cooled front storage			◦	◦
Rear storage net pocket			•	•
Rubber mats for the storages			•	•
Roof shelf				•
Power socket	•	•	•	•
Speedometer km/h - mph	•	•	•	•
Radio preparation (antenna + speakers + support + 2 nd power socket + mute switch)			◦	◦
Radio with CD player and MP3 connection			◦	◦

* Deluxe on BL70B only

* No key pad. Function included in right instrument panel display

Selection of Volvo optional equipment

First aid kit and extinguisher brackets



Flip over foot



Stabilizer guard



Powershift



Drive shaft guard



Air conditioning



Not all products are available in all markets. Under our policy of continuous improvement, we reserve the right to change specifications and design without prior notice. The illustrations do not necessarily show the standard version of the machine.

VOLVO

Volvo Construction Equipment

www.volvoce.com