



NEW HOLLAND
CONSTRUCTION

LB75.B, LB90 and LB110 Loader Backhoes

LB110
Horsepower
108 hp
(80.6 kW)

Weight
14,814 lbs
(6,720 kg)

**Dig Depth
Standard**
15'1"
(4,592 mm)

**Dig Depth
HED**
18'11"
(5,776 mm)

LB90
Horsepower
98 hp
(72 kW)

Weight
14,714 lbs
(6,674 kg)

**Dig Depth
Standard**
14'1"
(4,299 mm)

**Dig Depth
HED**
18'0"
(5,482 mm)

LB75.B
Horsepower
90 hp
(67 kW)

Weight
14,714 lbs
(6,674 kg)

**Dig Depth
Standard**
14'1"
(4,299 mm)

**Dig Depth
HED**
18'0"
(5,482 mm)

NEW HOLLAND CONSTRUCTION
BUILDS

TECHNOLOGIES

LB115.B

LB110

LB90

LB75.B



Photos and images in this brochure may be shown with optional equipment installed.

Loader Backhoe

Technology is the driving force behind New Holland Construction.

Our ability to translate technical features into bottom-line benefits that deliver the productivity owners need, the comfort operators want, the reliability service technicians demand and the versatility to handle many applications is what separates our new LB75.B, LB90 and LB110 loader backhoes from all competitive models.

All three of these machines are now more productive: with increased hydraulic pump capacities and more powerful breakout forces. They're far more reliable: boasting 20% thicker booms and dippers and a new boom-lock design that reduces failures dramatically. They're very comfortable, featuring supportive suspension seats and iso-mounted cabs, engines and transmissions, plus cab visibility that's best-in-class. And they're extremely versatile: the LB75.B, LB90 and LB110 can each mount a multitude of different attachments. They all accommodate multiple loader bucket options and their optional electro-hydraulic couplers speed up changeovers.

All these features add up to more ways to improve your bottom line with superior machines designed to turn technologies into profits.

Productivity

Turbocharged engine	2
PowerShift transmission	2
Hydraulic system	2
Breakout force	3
Hand-tool circuit	3

Comfort

Massive main frame	4
Operator visibility	4
Ergonomic seat	4
Cab amenities	4
Instrumentation	5

Reliability

Ease of service	6
Engine access	6
Reliable axles	6
Exterior paint	7
Security features	7

Versatility

Loader versatility	8
Backhoe versatility	8
Auxiliary hydraulics	8
Hand-tool attachments	9

Specifications

LB75.B Loader	10
LB75.B Backhoe	11
LB90 Loader	12
LB90 Backhoe	13
LB110 Loader	14
LB110 Backhoe	15
LB75.B Dimensions	16
LB90 Dimensions	17
LB110 Dimensions	18
Standard equipment	19
Factory-installed options	19



NEW HOLLAND
CONSTRUCTION



**THE PERFECT BALANCE
OF POWER AND PRECISE
CONTROL MAKES THESE
BACKHOE LOADERS VERY
PRODUCTIVE AND
OWNER FRIENDLY.**

These New Holland Construction engines are proven performers

Here are two power plants that have proven their extraordinary reliability and efficiency in virtually every type of environment around the world. The New Holland Construction engines that drive these loader backhoes are emissionized, direct-injection 4-cycle diesels that deliver 85 hp (LB75.B), 93 hp (LB90) and 103 hp (LB110) respectively, as well as 262 ft-lbs (LB75.B) and 326 ft-lbs (LB90/LB110) of earth-moving torque. Enough to tackle any job, head-on.

Balance that kind of raw strength with the LB75.B, LB90 and LB110's precision controls and you've got high-tech tools that eagerly respond to any challenge. Factor in New Holland Construction's renowned reliability, excellent parts and service support plus the clean-burning, reliable reputation of these engines and you have gutsy performers that can push your business to a higher standard of productivity.

PowerShift transmissions translate power into movement

The sophisticated 4x2 PowerShift transmissions in these machines (optional on LB90 and LB110) translate high engine output into effortless movement over any terrain.

Four forward and two reverse speeds — aided by automatic shifting, automatic four-wheel-drive cutout and kick down — get these loader backhoes where they need to be on the jobsite quickly and easily. The gear selector digital display lets operators know which gear they're in at a glance, for optimum efficiency.

Hydraulics that let operators feel what they're digging

Our advanced, open-center hydraulic system is a clean and simple design with fewer parts than closed-center systems. It refines the raw power that your operators need to move materials, even when these loader backhoes are on the move. Our controls provide exceptional feedback, so operators can actually feel obstructions in the trench with their fingertips.

The dual-gear pump is driven coaxially from the transmission, efficiently delivering oil flows to the hydraulic circuits when and where you need the power. Face seal fittings offer increased reliability and reduce the chance for leakage. Dirt, that would otherwise invade the system and cause damage is stopped by our high efficiency filters.

New Holland Construction's engineers have standardized the components of the hydraulic system. The standard gear



LB75.B/LB90/LB110

NEW HOLLAND CONSTRUCTION

pump and sectional valves will cut your maintenance costs. Each of the LB75.B, LB90 and LB110's hydraulic components have been thoughtfully laid out for easy access and quick servicing.

The sheer breakout force of our loaders speeds up cycle times

The LB75.B, LB90 and LB110 feature straight-arm loaders with four-bar linkage and dual cylinders, giving these loader backhoes superior bucket rotation and breakout force that can bury competitive models — and, giving you a competitive edge.

You'll profit from outstanding cycle times, which are matched to the engine and transmission performance for increased productivity. The LB75.B, LB90 and LB110 also have improved loader performance over our previous models, enabling you to do more than ever before. A massive, integral loader tower and oversized torque tube offers exceptional rigidity and strength for better breakout force and lifting capacity. All this power is controlled by a single ergonomic loader control lever — for the ultimate in operator productivity.

An extraordinarily handy hand-tool circuit

Because New Holland Construction wants you to be as productive as you can possibly be with our equipment, we offer an optional hand-tool circuit that gives you even more capabilities on the job site. The hand-tool circuit connects under the left front side of the main frame with quick-coupler connections that let you hook up to hand saws, augers and more in a snap. Because the hand-tool circuit has priority, you'll have a consistent hydraulic flow — even when the backhoe is in use.

LB75.B ENGINE

Net power (SAE J1349)	85 hp net (63 kW)
Make and Model	New Holland BSD 450
Type	Emissionized, direct injection, 4-cycle
Governed RPM	2,200 RPM
Number of cylinders	4
Displacement	304 cu in (5.0 L)

LB75.B HYDRAULIC SYSTEM

System type	Open center
Pump type	Dual gear
Pump capacity	40 gpm
System relief pressure	3,045 psi

LB90 ENGINE

Net power (SAE J1349)	93 hp (69 kW)
Make and Model	New Holland BSD 450T
Type	Turbocharged, emissionized, direct injection, 4-cycle
Governed RPM	2,200 RPM
Number of cylinders	4
Displacement	304 cu in (5.0 L)

LB90 HYDRAULIC SYSTEM

System type	Open center
Pump type	Dual gear
Pump capacity	41 gpm
System relief pressure	3,045 psi

LB110 ENGINE

Net power (SAE J1349)	103 hp (77 kW)
Make and Model	New Holland BSD 450T
Type	Turbocharged, emissionized, direct injection, 4-cycle
Governed RPM	2,200 RPM
Number of cylinders	4
Displacement	304 cu in (5.0 L)

LB110 HYDRAULIC SYSTEM

System type	Open center
Pump type	Dual gear
Pump capacity	42 gpm
System relief pressure	3,045 psi



**THIS OPERATING
ENVIRONMENT WAS
CAREFULLY DESIGNED
TO MAKE IT MORE
COMFORTABLE AND
OPERATOR FRIENDLY.**

Our massive main frame keeps operators fatigue-free

The backbone of the LB75.B, LB90 and LB110 is a massive piece of steel: our one-piece main frame. Born of fire and molded to support our high-tech loader backhoes, it provides maximum strength and durability for uncompromised serviceability.

What's more, we iso-mounted the LB75.B, LB90 and LB110's engines, transmissions and cabs to ensure that vibration will not interfere with the operator's ability to focus completely on the task at hand.

More operator visibility = more operator confidence

These loader backhoes boast best-in-class visibility, thanks to the slim cab pillars, a sloping engine hood and the narrow boom profile. We designed the cab with a full 360 degrees of visibility to make operators absolutely sure that they feel connected to their task and confident with every move.

When it comes to keeping an eye on the job at hand, New Holland Construction's new LB75.B, LB90 or LB110 loader backhoes can't be beat. Their one-piece rear window — which moves up, above the operator's seat — provides unobstructed visibility all the way into the trench. The

cab's side windows can be opened completely or partially, for the ultimate in cross-ventilation.

Making operators comfortable makes them productive

The surprisingly plush operator's seat that comes standard on the LB75.B, LB90 and LB110 backhoe loaders is extremely comfortable and includes a retractable seat belt for added safety. Deluxe units feature an air-suspension seat which acts as a shock absorber, further reducing operator fatigue.

Our standard, ergonomically-designed seat is completely adjustable: height, forward and aft positions can be adjusted by operators for a comfortable fit that will allow them to concentrate on tasks without discomforting distractions. A simple click of the handle under the left side of the seat easily spins the whole seat around to face either the front loader or the rear backhoe. All the while, operators enjoy ample leg and foot room — even when turning the seat.

A mobile office with all the amenities of home

New Holland Construction's designers built the spacious and well-laid-out cabs on the LB75.B, LB90 and LB110 so that operators could enter from either side and work in a clean, comfortable operating environment. There's a high-

MENT



All controls and gauges are conveniently located and easy to read, reach and operate.



Open canopy versions come standard with locking vandal cover.

LB75.B/LB90/LB110

NEW HOLLAND CONSTRUCTION

output ventilation system with 10 vents on the front and rear sides of the cab; a reliable, quick-warm-up-and-defrost heating system and an air conditioning system to help operators keep their cool in the blazing summer heat.

Each control is sealed to stay clean and run smooth, and the wiring harnesses are all protected by state-of-the-art, water-tight connections. These cabs even boast coat hooks, factory-ready radio hookups and an easy-to-access fuse panel for minor troubleshooting.

Easy-to-find, easy-to-use controls and instrumentation

We made every control and instrument in the LB75.B, LB90 and LB110 easy to find and use. From the transmission shuttle lever and front/rear windshield wipers, lights and flashers to the throttle, fuel gauge and parking brake control, there's nothing an operator needs that can't be reached in an instant. Every control has been ergonomically designed for maximum productivity with minimal exertion.

The buttons and instruments have been enlarged to make them easier to read. The analog instrumentation pods are one piece, making it simple for the operator to survey the total operating situation at a single glance.

The ergonomic one-lever loader control makes it simple to dig, load and dump with high precision and little effort. Simply pull back to raise the bucket, push forward to lower it. Touch a button to disconnect the transmission and direct full power to the loader.

There are four backhoe control options to accommodate any operator's style: two-lever SAE, two-lever ISO, three-lever with footswing and four-lever. Each configuration offers precise, convenient operation that directs the LB75.B, LB90 and LB110's tremendous power with optimum control where needed.





**EACH COMPONENT
IS ENGINEERED FOR
EASY MAINTENANCE,
TO MAKE IT MORE
RELIABLE AND MORE
TECHNICIAN FRIENDLY.**

Everything about this design says “at your service”

New Holland Construction's goal is to keep our LB75.B, LB90 and LB110 loader backhoes up and running every hour of every working day. To help ensure this, we designed them with a componentized drive train and one-piece mainframe for unrivaled service access. The swing cylinders have been redesigned with an eye toward extended life and easy servicing. There are full sealed bushings all the way through the backhoe for better reliability. All grease points have an extended 50-hour lube interval. Backhoe pins have seals, so the grease stays where it's needed and dirt stays out.

Both the fuel and hydraulic tanks are saddle-mounted on either side of the cab, for easy ground-level filling and to reduce the chance of spills. Our hydraulic fill indicators display the system's oil level. Diagnostic ports under the left engine panel make checking system pressures a breeze. And the access panel makes it simple to clean out the reservoir or service the strainer.

Access to engine components is effortless

We designed the engine's side panels so they can be locked and so they can be easily removed, enabling your service technicians to access the coolant expansion bottle, oil fill point, oil filter, dipstick, air cleaner and all

other engine components — regardless of whether the loader arms are up or down.

The engine's oil capacity has been increased for cooler-running, longer-lasting components. The radiator features a clear plastic expansion tank that lets technicians visually check the coolant level. And the transmission fluid level can be checked and topped off from ground level, making service very easy and downtime a thing of the past.

Reliable axles work hard to improve uptime

The LB75.B, LB90 and LB110 both feature tough, double-reduction front axles that are field-proven to deliver high torque transfer to the ground — whether it's a deep mud bog or a steep grade — without compromising the 15.5" ground clearance. Plus, New Holland Construction's in-board planetary rear axles, known industry-wide for their reliability, provide years of reliable service, no matter how harsh the working conditions.

Our two-wheel-drive units have heavy-duty cast construction for superb power and stability. For even greater traction, we offer optional four-wheel-drive. Both drive-line configurations support an integral steering cylinder



All grease points have an extended 50-hour lube interval.



Backhoe pins have seals, so grease stays where it's needed and dirt stays out.

technician friendly

LB75.B/LB90/LB110

NEW HOLLAND CONSTRUCTION

that improves performance and reliability. And, both come with full hydraulic, self-equalizing and self-adjusting wet rear disc brakes that turn and stop on a dime.

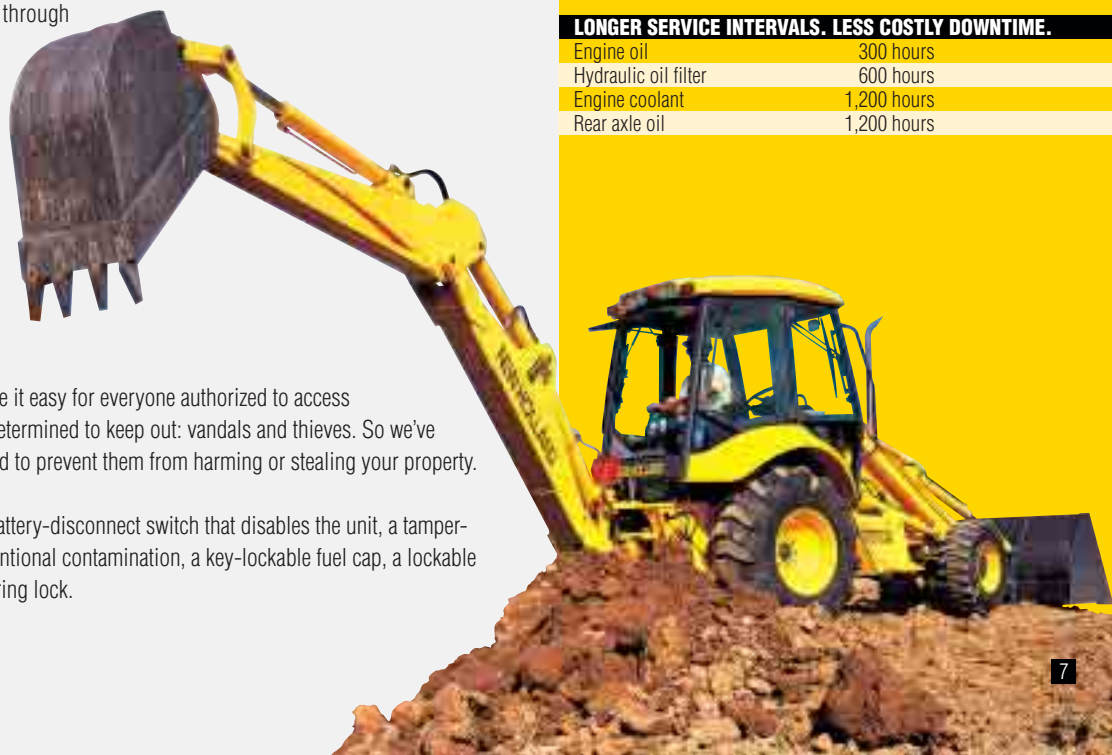
Even our exterior paint is tough

We even worked on making the exterior maintenance-free by developing a tough, durable surface finish through the use of a state-of-the-art paint process that employs electrostatic powder coatings. Plus, we used durable zinc-cobalt on all the LB75.B, LB90 and LB110's non-painted metal parts, virtually eliminating rust. It's just another example of the attention our designers pay, to even the smallest detail, if it can make a difference to your bottom line.

We make access easy for everyone — except vandals and thieves

While New Holland Construction wants to make it easy for everyone authorized to access your backhoe loader, there's one group we're determined to keep out: vandals and thieves. So we've developed a group of security features designed to prevent them from harming or stealing your property.

There are key-lockable engine side panels, a battery-disconnect switch that disables the unit, a tamper-proof hydraulic reservoir cap that prevents intentional contamination, a key-lockable fuel cap, a lockable instrument console cover and an optional steering lock.



REFILL CAPACITIES	LB75.B	LB90 & LB110
Fuel tank	33.0 gal (124.88 L)	33.0 gal (124.88 L)
Cooling system	6.5 gal (24.59 L)	6.5 gal (24.59 L)
Engine oil includes filter	4.5 gal (17.02 L)	4.5 gal (17.02 L)
Hydraulic tank	28.0 gal (105.96 L)	28.0 gal (105.96 L)
Hydraulic system	38.0 gal (143.80 L)	38.0 gal (143.80 L)

LONGER SERVICE INTERVALS. LESS COSTLY DOWNTIME.

Engine oil	300 hours
Hydraulic oil filter	600 hours
Engine coolant	1,200 hours
Rear axle oil	1,200 hours



application friendly

VERSATA

**BECAUSE YOU NEED
LOADER BACKHOES
TO DO DIFFERENT
JOBS, OURS ARE
VERY VERSATILE
AND APPLICATION
FRIENDLY.**

Optional couplers enhance loader versatility

Quickly switch from one application to another while on the jobsite. The LB75.B, LB90 and LB110's loaders feature an optional auxiliary hydraulic circuit with a mechanical quick-attach system or an electro-hydraulic quick coupler, for fast and easy hook-up to many attachments:

- Sweeper brooms
- Angle dozer
- Four-in-one bucket
- Snow blower
- Scrap Grapple
- Forks
- Auger

Optional mechanical quick coupler accepts backhoe attachments

The faster attachments can be changed out, the quicker you're back to making money, which is why the backhoe's coupler was designed for the most rapid switch-outs possible:

- Backfill blade
- Cemetery bucket
- Pavement-removal bucket
- Ripper teeth
- V-ditching bucket

Expand your versatility with auxiliary hydraulics

Activate the backhoe auxiliary hydraulics from inside the cab with our easy-to-use foot pedal to run even more attachments:

- Hydraulic breaker
- Hydraulic compactor
- Hydraulic auger
- Hydraulic thumb





Quick couplers are available for the LB75.B, LB90 and LB110 to adapt them to any application.

LB75.B/LB90/LB110

NEW HOLLAND CONSTRUCTION

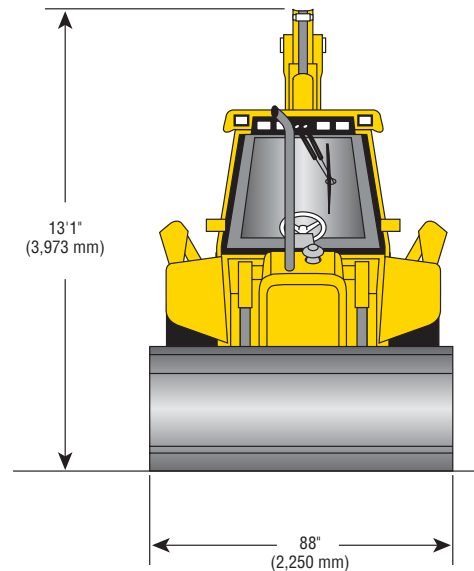
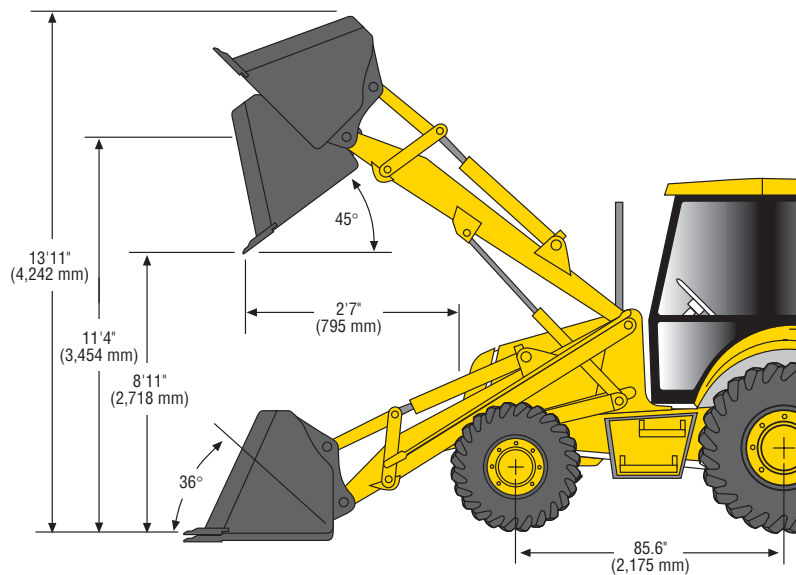
Hand-tool attachments maximize your versatility

In addition to the attachments our LB75.B, LB90 and LB110 can accommodate with their loader and backhoe, there are several hand-tool attachments that can help you take on smaller jobs when they arise. Simply use the optional hand-tool circuit on the front left side of the unit to plug in these attachments:

- Post-hole digger
- Hand-held breaker
- Chop saw
- Cable cutter
- Chain saw
- Hydraulic trash pump
- Hand-held compactor



LB75.B SPECIFICATIONS



LB75.B

LOADER

DIMENSIONS - LOADER	Heavy Duty General Purpose		Multi-Purpose (4x1)		Multi-Purpose (6x1)	
Height-to-hinge-pin	11'4"	(3,456 mm)	11'4"	(3,456 mm)	11'4"	(3,456 mm)
Max dump angle	45°		45°		45°	
Max grading angle	130°		130°		130°	
Reach at 45° dump angle	2'7"	(795 mm)	2'7"	(795 mm)	2'7"	(795 mm)
Max operating height	14'0"	(4,284 mm)	14'0"	(4,284 mm)	14'0"	(4,284 mm)
Dump height	8'10"	(2,710 mm)	8'10"	(2,710 mm)	8'10"	(2,710 mm)

PERFORMANCE - LOADER						
Bucket capacity	1.3 cu yd	(1.0 m³)	1.3 cu yd	(1.0 m³)	1.3 cu yd	(1.0 m³)
Bucket breakout force	13,942 lbs	(6,324 kg)	14,056 lbs	(6,375 kg)	14,056 lbs	(6,375 kg)
Lift capacity to full height	7,782 lbs	(3,529 kg)	7,454 lbs	(3,381 kg)	7,176 lbs	(3,254 kg)
SAE heaped capacity	1.3 cu yd	(1.0 m³)	1.3 cu yd	(1.0 m³)	1.3 cu yd	(1.0 m³)
SAE struck capacity	1.07 cu yd	(.82 m³)	1.07 cu yd	(.82 m³)	1.07 cu yd	(.82 m³)
Bucket weight	881.5 lbs	(400 kg)	1,576 lbs	(715 kg)	1,576 lbs	(715 kg)
Cutting width	88"	(2,250 mm)	88"	(2,250 mm)	88"	(2,250 mm)
Cycle						
Raise to full height	4.4 sec		4.4 sec		4.4 sec	
Dump time	1.2 sec		1.2 sec		1.2 sec	
Lower	3.4 sec		3.4 sec		3.4 sec	

FACTORY-ENDORSED ATTACHMENTS

Optional loader attachments

- Sweeper brooms
- Angle dozer
- Four-in-one bucket
- Snow blower
- Auger
- Claw
- Forks

Optional backhoe attachments

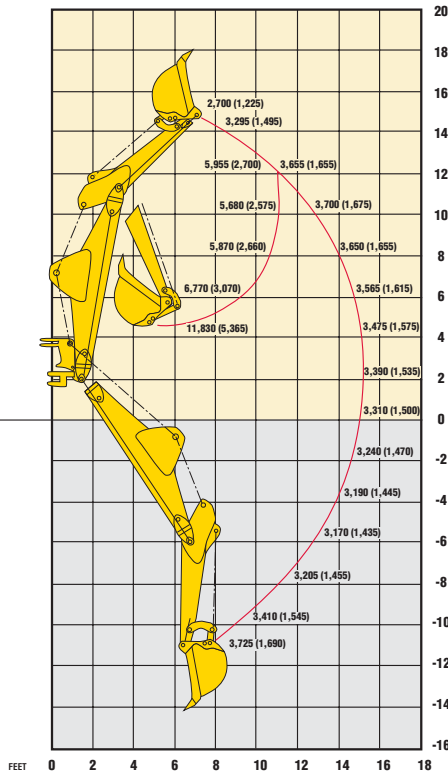
- Hydraulic breaker
- Ripper teeth
- Cemetery bucket
- V-ditching bucket
- Backfill blade
- Pavement-removal bucket
- Hydraulic compactor
- Hydraulic auger

Optional hand-tool attachments

- Post-hole digger
- Hand-held breaker
- Chop saw
- Cable cutter
- Chain saw
- Hydraulic trash pump
- Hand-held compactor

STANDARD BACKHOE (4WD) SHORT DIPPER

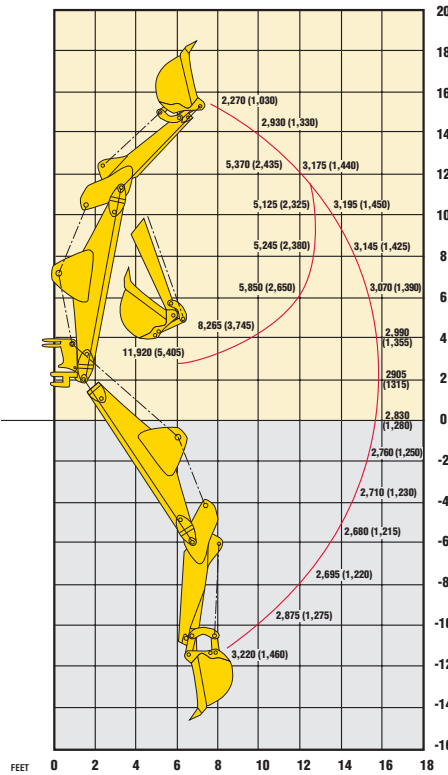
with 24", 412 lb bucket



SAE 3,054 psi
P=210 Bar
Front Counterweight
Front Tires: 12-16.5 (contractor 4WD) TITAN
Rear Tires: 19.5L-24 (Ind. Tract. Lug R4) TITAN

HED BACKHOE RETRACTED (4WD)

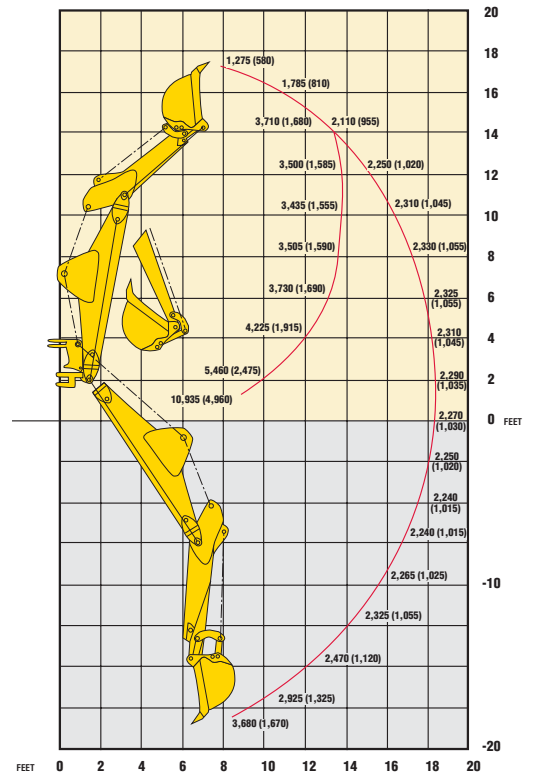
with 24", 412 lb bucket



SAE 3,054 psi
P=210 Bar
Front Counterweight
Front Tires: 12-16.5 (contractor 4WD) TITAN
Rear Tires: 19.5L-24 (Ind. Tract. Lug R4) TITAN

HED BACKHOE EXTENDED (4WD)

with 24", 412 lb bucket



SAE 3,054 psi
P=210 Bar
Front Counterweight
Front Tires: 12-16.5 (contractor 4WD) TITAN
Rear Tires: 19.5L-24 (Ind. Tract. Lug R4) TITAN

LB75.B

BACKHOE

DIMENSIONS - BACKHOE	Standard		Retracted		Extended	
Dig depth - 2' flat bottom	14'0"	(4,262 mm)	14'6"	(4,420 mm)	17'11"	(5,464 mm)
Dig depth - 8' flat bottom	12'9"	(3,874 mm)	13'4"	(4,061 mm)	17'0"	(5,184 mm)
Loading height	12'2"	(3,705 mm)	12'2"	(3,705 mm)	14'8"	(4,453 mm)
Loading reach	5'7"	(1,683 mm)	5'7"	(1,683 mm)	8'9"	(2,657 mm)
Max operating height	18'1"	(5,504 mm)	18'1"	(5,504 mm)	20'6"	(6,250 mm)
Reach from swing post	18'2"	(5,539 mm)	18'9"	(5,710 mm)	21'10"	(6,651 mm)
Reach from rear axle	21'10"	(6,660 mm)	22'5"	(6,831 mm)	25'6"	(7,772 mm)
Stabilizers						
Width - transport	7'5"	(2,260 mm)				
Width - working (SAE)	10'7"	(3,230 mm)				
Swing arc	180°		180°		180°	
PERFORMANCE - BACKHOE						
Max dig depth	14'1"	(4,299 mm)	14'7"	(4,442 mm)	18'0"	(5,482 mm)
Bucket capacity (Std 24")	7.5 cu ft	(.21 m³)	7.5 cu ft	(.21 m³)	7.5 cu ft	(.21 m³)
Bucket digging force	12,808 lbs	(5,810 kg)	12,808 lbs	(5,810 kg)	12,808 lbs	(5,810 kg)
Crowd digging force	9,217 lbs	(4,181 kg)	8,558 lbs	(3,882 kg)	6,221 lbs	(2,822 kg)
Boom lift @ -8 ft	3,205 lbs	(1,453 kg)	2,695 lbs	(1,222 kg)	2,265 lbs	(1,027 kg)
Dipper lift @ +10 ft	5,680 lbs	(2,576 kg)	5,125 lbs	(2,325 kg)	3,435 lbs	(1,558 kg)
Bucket rotation (max)	204°		204°		204°	

UNDERSTANDING LIFT CAPACITIES

Lift charts allow customers to compare lift capacities of different brands and models of backhoes. The numbers in the charts are always less than the actual tested lift capacity of the backhoe.

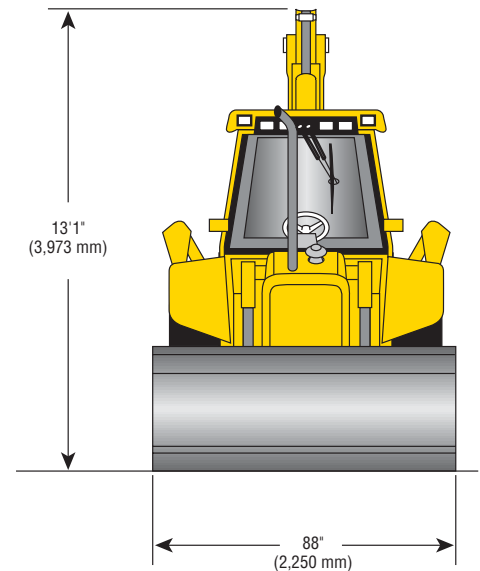
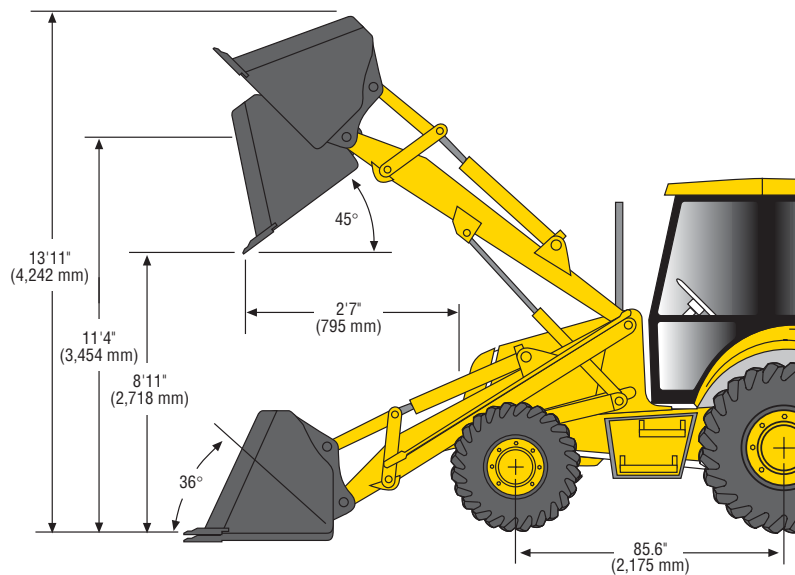
If the backhoe lift for a particular height is limited by the hydraulic system (relief pressure), the actual lift capacity will be 15% higher than the number on the chart. If, during the test, the vehicle becomes unstable (the front wheels come off the ground), the actual lift capacity is 33% greater than the number on the chart. If the capacity is limited by stability, this must be clearly stated on the chart.

Each chart has two arc lines on a grid. The longer arc shows boom lift capacity; the shorter arc shows dipper lift capacity. All tests are conducted with a backhoe bucket installed and in the fully open (dump) position.

When testing boom lifting capacity, the dipper is positioned all the way out and a weight or measuring device is attached to the bucket hinge pin. The boom cylinder is then used to lift the weight vertically with the force being recorded every two feet.

When testing dipper lift capacity, the boom is set in the transport position without the lock engaged, or to an angle specified by the manufacturer. The boom is kept in this position for all dipper tests. The weight or measuring device is again attached to the bucket hinge pin point. The dipper cylinder is then used to lift the weight and record the force every two feet.

LB90 SPECIFICATIONS



LB90

LOADER

DIMENSIONS - LOADER	Heavy Duty General Purpose		Multi-Purpose (4x1)		Multi-Purpose (6x1)	
Height-to-hinge-pin	11'4"	(3,456 mm)	11'4"	(3,456 mm)	11'4"	(3,456 mm)
Max dump angle	45°		45°		45°	
Max grading angle	130°		130°		130°	
Reach at 45° dump angle	2'7"	(795 mm)	2'7"	(795 mm)	2'7"	(795 mm)
Max operating height	14'0"	(4,284 mm)	14'0"	(4,284 mm)	14'0"	(4,284 mm)
Dump height	8'10"	(2,710 mm)	8'10"	(2,710 mm)	8'10"	(2,710 mm)

PERFORMANCE - LOADER						
Bucket capacity	1.3 cu yd	(1.0 m³)	1.3 cu yd	(1.0 m³)	1.3 cu yd	(1.0 m³)
Bucket breakout force	13,942 lbs	(6,324 kg)	14,056 lbs	(6,375 kg)	14,056 lbs	(6,375 kg)
Lift capacity to full height	7,782 lbs	(3,529 kg)	7,454 lbs	(3,381 kg)	7,176 lbs	(3,254 kg)
SAE heaped capacity	1.3 cu yd	(1.0 m³)	1.3 cu yd	(1.0 m³)	1.3 cu yd	(1.0 m³)
SAE struck capacity	1.07 cu yd	(.82 m³)	1.07 cu yd	(.82 m³)	1.07 cu yd	(.82 m³)
Bucket weight	881.5 lbs	(400 kg)	1,576 lbs	(715 kg)	1,576 lbs	(715 kg)
Cutting width	88"	(2,250 mm)	88"	(2,250 mm)	88"	(2,250 mm)
Cycle						
Raise to full height	4.4 sec		4.4 sec		4.4 sec	
Dump time	1.2 sec		1.2 sec		1.2 sec	
Lower	3.4 sec		3.4 sec		3.4 sec	

FACTORY-ENDORSED ATTACHMENTS

Optional loader attachments

- Sweeper brooms
- Angle dozer
- Four-in-one bucket
- Snow blower
- Auger
- Claw
- Forks

Optional backhoe attachments

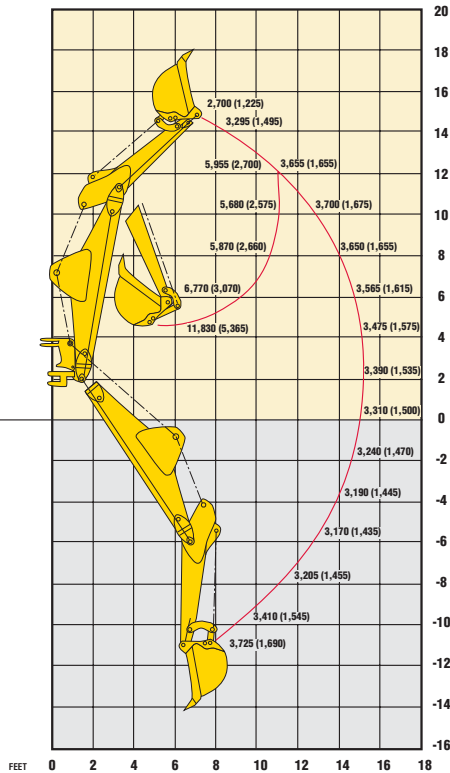
- Hydraulic breaker
- Ripper teeth
- Cemetery bucket
- V-ditching bucket
- Backfill blade
- Pavement-removal bucket
- Hydraulic compactor
- Hydraulic auger

Optional hand-tool attachments

- Post-hole digger
- Hand-held breaker
- Chop saw
- Cable cutter
- Chain saw
- Hydraulic trash pump
- Hand-held compactor

STANDARD BACKHOE (4WD) SHORT DIPPER

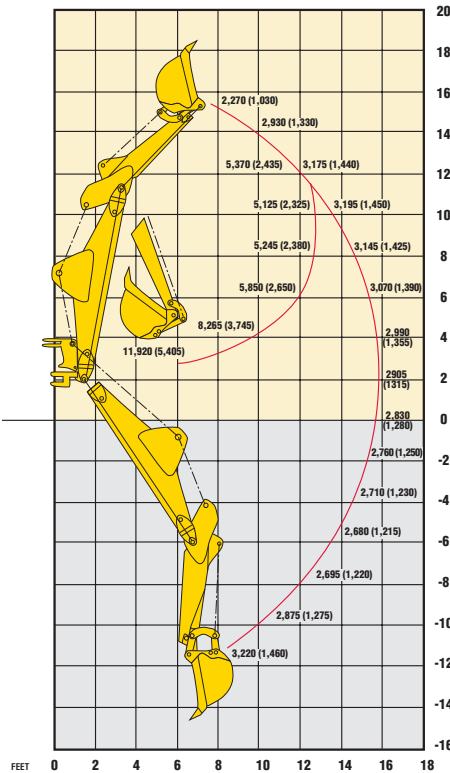
with 24", 412 lb bucket



SAE 3,054 psi
P=210 Bar
Front Counterweight
Front Tires: 12-16.5 (contractor 4WD) TITAN
Rear Tires: 19.5L-24 (Ind. Tract. Lug R4) TITAN

HED BACKHOE RETRACTED (4WD)

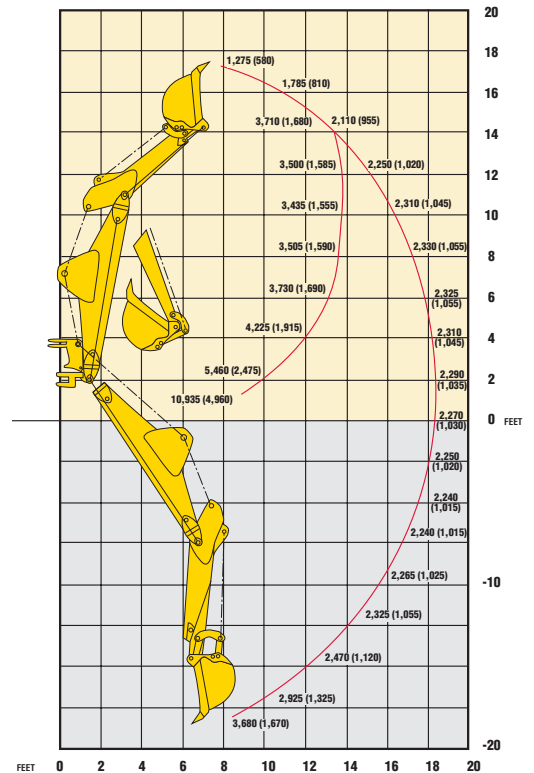
with 24", 412 lb bucket



SAE 3,054 psi
P=210 Bar
Front Counterweight
Front Tires: 12-16.5 (contractor 4WD) TITAN
Rear Tires: 19.5L-24 (Ind. Tract. Lug R4) TITAN

HED BACKHOE EXTENDED (4WD)

with 24", 412 lb bucket



SAE 3,054 psi
P=210 Bar
Front Counterweight
Front Tires: 12-16.5 (contractor 4WD) TITAN
Rear Tires: 19.5L-24 (Ind. Tract. Lug R4) TITAN

LB90

BACKHOE

DIMENSIONS - BACKHOE	Standard		Retracted		Extended	
Dig depth - 2' flat bottom	14'0"	(4,262 mm)	14'6"	(4,420 mm)	17'11"	(5,464 mm)
Dig depth - 8' flat bottom	12'9"	(3,874 mm)	13'4"	(4,061 mm)	17'0"	(5,184 mm)
Loading height	12'2"	(3,705 mm)	12'2"	(3,705 mm)	14'8"	(4,453 mm)
Loading reach	5'7"	(1,683 mm)	5'7"	(1,683 mm)	8'9"	(2,657 mm)
Max operating height	18'1"	(5,504 mm)	18'1"	(5,504 mm)	20'6"	(6,250 mm)
Reach from swing post	18'2"	(5,539 mm)	18'9"	(5,710 mm)	21'10"	(6,651 mm)
Reach from rear axle	21'10"	(6,660 mm)	22'5"	(6,831 mm)	25'6"	(7,772 mm)
Stabilizers						
Width - transport	7'5"	(2,260 mm)				
Width - working (SAE)	10'7"	(3,230 mm)				
Swing arc	180°		180°		180°	
PERFORMANCE - BACKHOE						
Max dig depth	14'1"	(4,299 mm)	14'7"	(4,442 mm)	18'0"	(5,482 mm)
Bucket capacity (Std 24")	7.5 cu ft	(.21 m³)	7.5 cu ft	(.21 m³)	7.5 cu ft	(.21 m³)
Bucket digging force	12,808 lbs	(5,810 kg)	12,808 lbs	(5,810 kg)	12,808 lbs	(5,810 kg)
Crowd digging force	9,217 lbs	(4,181 kg)	8,558 lbs	(3,882 kg)	6,221 lbs	(2,822 kg)
Boom lift @ -8 ft	3,205 lbs	(1,453 kg)	2,695 lbs	(1,222 kg)	2,265 lbs	(1,027 kg)
Dipper lift @ +10 ft	5,680 lbs	(2,576 kg)	5,125 lbs	(2,325 kg)	3,435 lbs	(1,558 kg)
Bucket rotation (max)	204°		204°		204°	

UNDERSTANDING LIFT CAPACITIES

Lift charts allow customers to compare lift capacities of different brands and models of backhoes. The numbers in the charts are always less than the actual tested lift capacity of the backhoe.

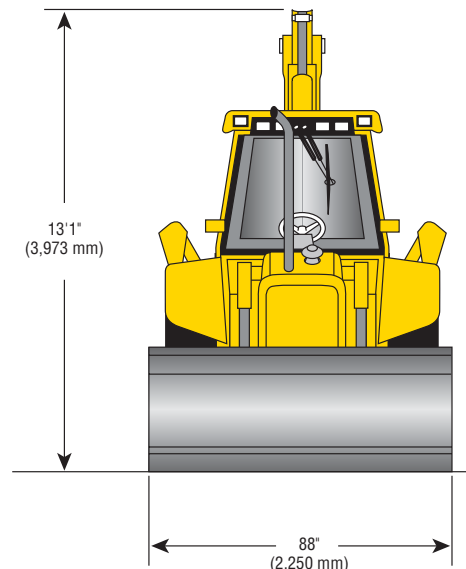
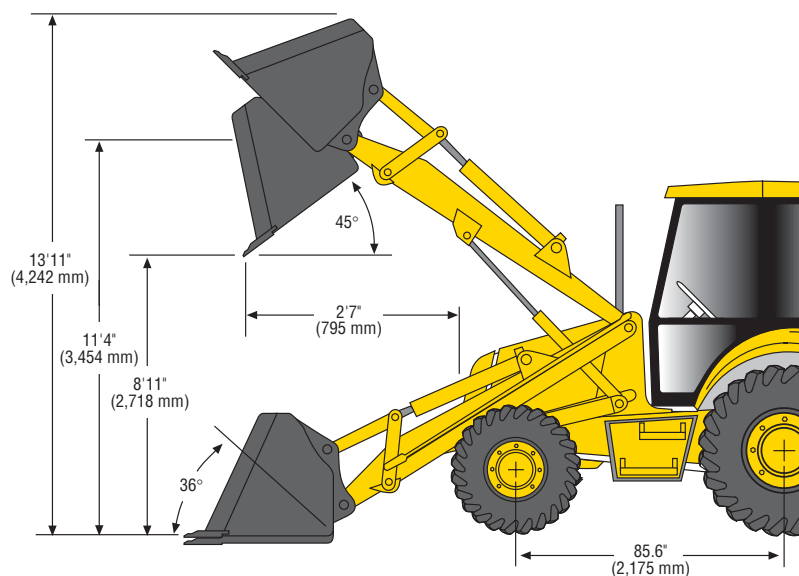
If the backhoe lift for a particular height is limited by the hydraulic system (relief pressure), the actual lift capacity will be 15% higher than the number on the chart. If, during the test, the vehicle becomes unstable (the front wheels come off the ground), the actual lift capacity is 33% greater than the number on the chart. If the capacity is limited by stability, this must be clearly stated on the chart.

Each chart has two arc lines on a grid. The longer arc shows boom lift capacity; the shorter arc shows dipper lift capacity. All tests are conducted with a backhoe bucket installed and in the fully open (dump) position.

When testing boom lifting capacity, the dipper is positioned all the way out and a weight or measuring device is attached to the bucket hinge pin. The boom cylinder is then used to lift the weight vertically with the force being recorded every two feet.

When testing dipper lift capacity, the boom is set in the transport position without the lock engaged, or to an angle specified by the manufacturer. The boom is kept in this position for all dipper tests. The weight or measuring device is again attached to the bucket hinge pin point. The dipper cylinder is then used to lift the weight and record the force every two feet.

LB110 SPECIFICATIONS



LB110

LOADER

DIMENSIONS - LOADER	Heavy Duty General Purpose		Multi-Purpose (4x1)		Multi-Purpose (6x1)	
Height-to-hinge-pin	11'4"	(3,456 mm)	11'4"	(3,456 mm)	11'4"	(3,456 mm)
Max dump angle	45°		45°		45°	
Max grading angle	130°		130°		130°	
Reach at 45° dump angle	2'7"	(795 mm)	2'7"	(795 mm)	2'7"	(795 mm)
Max operating height	14'0"	(4,284 mm)	14'0"	(4,284 mm)	14'0"	(4,284 mm)
Dump height	8'10"	(2,710 mm)	8'10"	(2,710 mm)	8'10"	(2,710 mm)

PERFORMANCE - LOADER						
Bucket capacity	1.3 cu yd	(1.0 m³)	1.3 cu yd	(1.0 m³)	1.3 cu yd	(1.0 m³)
Bucket breakout force	13,942 lbs	(6,324 kg)	14,056 lbs	(6,375 kg)	14,056 lbs	(6,375 kg)
Lift capacity to full height	7,782 lbs	(3,529 kg)	7,454 lbs	(3,381 kg)	7,176 lbs	(3,254 kg)
SAE heaped capacity	1.3 cu yd	(1.0 m³)	1.3 cu yd	(1.0 m³)	1.3 cu yd	(1.0 m³)
SAE struck capacity	1.07 cu yd	(.82 m³)	1.07 cu yd	(.82 m³)	1.07 cu yd	(.82 m³)
Bucket weight	881.5 lbs	(400 kg)	1,576 lbs	(715 kg)	1,576 lbs	(715 kg)
Cutting width	88"	(2,250 mm)	88"	(2,250 mm)	88"	(2,250 mm)
Cycle						
Raise to full height	4.4 sec		4.4 sec		4.4 sec	
Dump time	1.2 sec		1.2 sec		1.2 sec	
Lower	3.4 sec		3.4 sec		3.4 sec	

FACTORY-ENDORSED ATTACHMENTS

Optional loader attachments

- Sweeper brooms
- Angle dozer
- Four-in-one bucket
- Snow blower
- Auger
- Claw
- Forks

Optional backhoe attachments

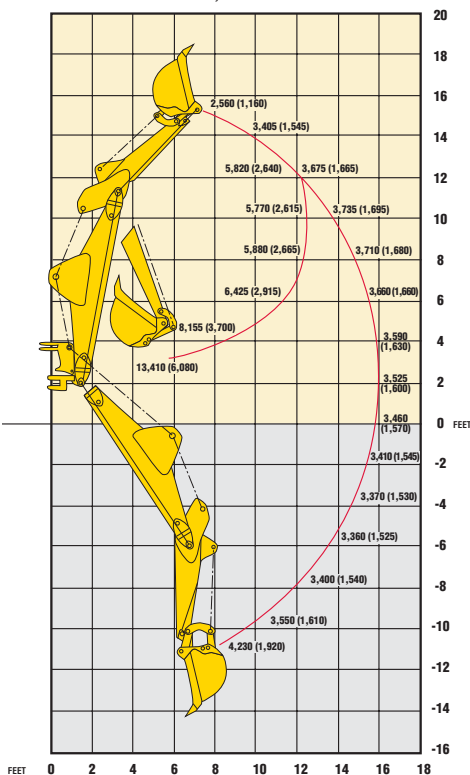
- Hydraulic breaker
- Ripper teeth
- Cemetery bucket
- V-ditching bucket
- Backfill blade
- Pavement-removal bucket
- Hydraulic compactor
- Hydraulic auger

Optional hand-tool attachments

- Post-hole digger
- Hand-held breaker
- Chop saw
- Cable cutter
- Chain saw
- Hydraulic trash pump
- Hand-held compactor

STANDARD BACKHOE (4WD) LONG DIPPER

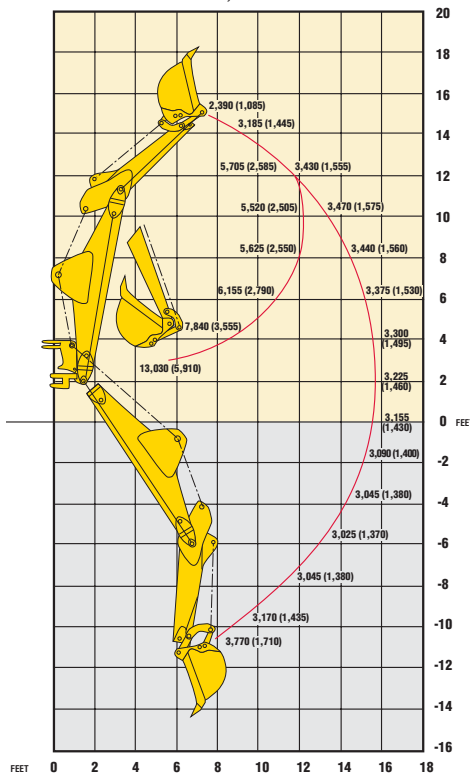
with 24", 412 lb bucket



SAE 3,054 psi
P=210 Bar
Front Counterweight
Front Tires: 12-16.5 (contractor 4WD) TITAN
Rear Tires: 19.5L-24 (Ind. Tract. Lug R4) TITAN

HED BACKHOE RETRACTED (4WD)

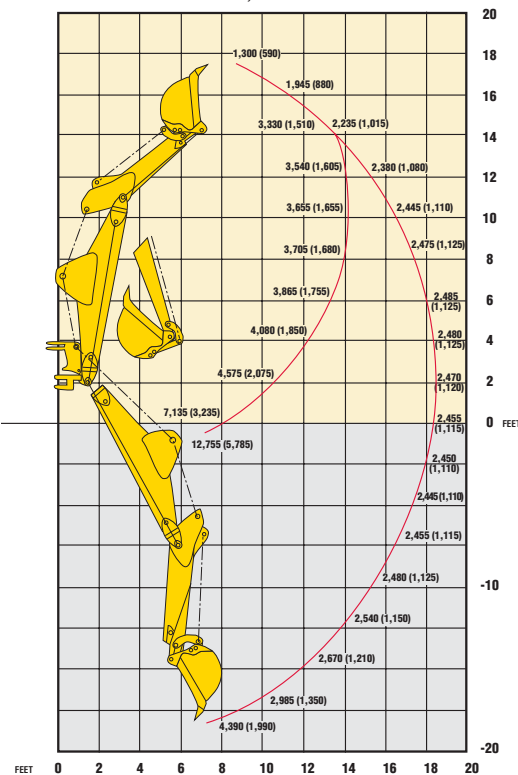
with 24", 412 lb bucket



SAE 3,054 psi
P=210 Bar
Front Counterweight
Front Tires: 12-16.5 (contractor 4WD) TITAN
Rear Tires: 19.5L-24 (Ind. Tract. Lug R4) TITAN

HED BACKHOE EXTENDED (4WD)

with 24", 412 lb bucket



SAE 3,054 psi
P=210 Bar
Front Counterweight
Front Tires: 12-16.5 (contractor 4WD) TITAN
Rear Tires: 19.5L-24 (Ind. Tract. Lug R4) TITAN

LB110

BACKHOE

DIMENSIONS - BACKHOE	Standard		Retracted		Extended	
Dig depth - 2' flat bottom	15'0"	(4,575 mm)	15'0"	(4,567 mm)	18'10"	(5,758 mm)
Dig depth - 8' flat bottom	13'11"	(4,237 mm)	13'11"	(4,237 mm)	18'0"	(5,494 mm)
Loading height	12'10"	(3,910 mm)	12'10"	(3,910 mm)	15'2"	(4,628 mm)
Loading reach	6'5"	(1,956 mm)	6'5"	(1,956 mm)	9'7"	(2,902 mm)
Max operating height	18'10"	(5,728 mm)	18'10"	(5,728 mm)	21'1"	(6,425 mm)
Reach from swing post	19'2"	(5,843 mm)	19'2"	(5,842 mm)	22'9"	(6,928 mm)
Reach from rear axle	22'10"	(6,963 mm)	22'10"	(6,962 mm)	26'5"	(8,047 mm)
Stabilizers						
Width - transport	7'5"	(2,260 mm)				
Width - working (SAE)	10'7"	(3,230 mm)				
Swing arc	180°		180°		180°	
PERFORMANCE - BACKHOE						
Max dig depth	15'1"	(4,592 mm)	15'1"	(4,592 mm)	18'11"	(5,776 mm)
Bucket capacity (Std 24")	7.5 cu ft	(.21 m³)	7.5 cu ft	(.21 m³)	7.5 cu ft	(.21 m³)
Bucket digging force	12,808 lbs	(5,810 kg)	12,808 lbs	(5,810 kg)	12,808 lbs	(5,810 kg)
Crowd digging force	8,088 lbs	(3,670 kg)	8,121 lbs	(3,684 kg)	5,771 lbs	(2,618 kg)
Boom lift @ -8 ft	3,400 lbs	(1,542 kg)	3,045 lbs	(1,381 kg)	2,480 lbs	(1,125 kg)
Dipper lift @ +10 ft	5,770 lbs	(2,617 kg)	5,520 lbs	(2,504 kg)	3,855 lbs	(1,749 kg)
Bucket rotation (max)	204°		204°		204°	

UNDERSTANDING LIFT CAPACITIES

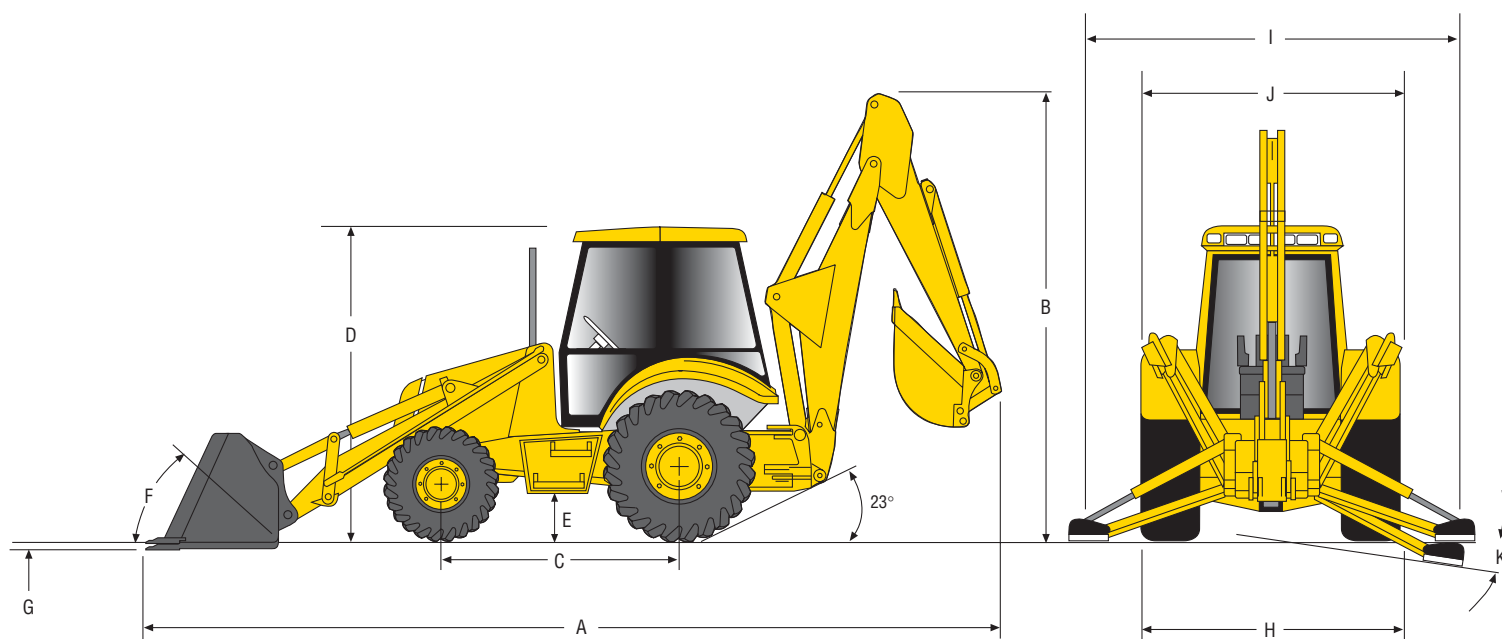
Lift charts allow customers to compare lift capacities of different brands and models of backhoes. The numbers in the charts are always less than the actual tested lift capacity of the backhoe.

If the backhoe lift for a particular height is limited by the hydraulic system (relief pressure), the actual lift capacity will be 15% higher than the number on the chart. If, during the test, the vehicle becomes unstable (the front wheels come off the ground), the actual lift capacity is 33% greater than the number on the chart. If the capacity is limited by stability, this must be clearly stated on the chart.

Each chart has two arc lines on a grid. The longer arc shows boom lift capacity; the shorter arc shows dipper lift capacity. All tests are conducted with a backhoe bucket installed and in the fully open (dump) position.

When testing boom lifting capacity, the dipper is positioned all the way out and a weight or measuring device is attached to the bucket hinge pin. The boom cylinder is then used to lift the weight vertically with the force being recorded every two feet.

When testing dipper lift capacity, the boom is set in the transport position without the lock engaged, or to an angle specified by the manufacturer. The boom is kept in this position for all dipper tests. The weight or measuring device is again attached to the bucket hinge pin point. The dipper cylinder is then used to lift the weight and record the force every two feet.



NEW HOLLAND CONSTRUCTION

LB75.B DIMENSIONS

LB75.B DIMENSIONS

A	Overall length-transport	23'3" (7,075 mm)
B	Transport height	13'1" (3,988 mm)
C	Wheelbase	
	2WD	85.6" (2,175 mm)
	4WD	85.6" (2,175 mm)
D	Height to top of ROPS/Cab	9'6" (2,885 mm)
E	Ground clearance	15.5" (394 mm)
F	Bucket rollback	
	at ground level	36°
	raised	55°
G	Digging depth below grade	5" (131 mm)
H	Overall width-transport	7'5" (2,261 mm)
I	Stabilizer spread-operating	10'7" (3,226 mm)
J	Stabilizer spread-transport	7'5" (2,261 mm)
K	Stabilizer spread-leveling angle	14°

LB75.B ENGINE

Horsepower, gross	90 hp (67 kW)
Make and model	New Holland BSD 450
Type	Emissionized, direct injection, 4-cycle diesel
Governed RPM	2,200 RPM
Number of cylinders	4
Displacement	304 cu in (5.0 L)

LB75.B PERFORMANCE

Horsepower (SAE J1349)	85 net (63 kW)
Torque	262 lbf-ft
@ Engine speed	1,400 RPM

LB75.B WEIGHT

Base unit	14,440 lbs
With options added	
4wd	+386 lbs
Cab	+397 lbs
4x1	+1,256 lbs
6x1	+1,576 lbs
HED (counterweight)	+200 lbs

LB75.B CYLINDER SPECS

Loader cylinder	3.14" bore x 26.9" stroke
Backhoe	
Boom cylinder	5.11" bore x 33.9" stroke
Arm cylinder	4.52" bore x 30.3" stroke
Bucket cylinder	3.54" bore x 30.0" stroke
Swing cylinder	4.33" bore x 9.33" stroke

LB75.B SWING

Swing torque	5,800 lbf-ft
--------------	--------------

LB75.B REFILL CAPACITIES

	US Gallons	(Liters)
Fuel tank	32.0 gal	(121.13 L)
Cooling system	6.5 gal	(24.59 L)
Engine oil includes filter	4.5 gal	(17.02 L)
Hydraulic tank	28.0 gal	(105.96 L)
Hydraulic system	38.0 gal	(143.80 L)

LB75.B HYDRAULIC SYSTEM

System type	Open center
Pump type	Dual gear
Pump capacity	40 gpm
System relief pressure	3,045 psi

LB75.B ELECTRICAL

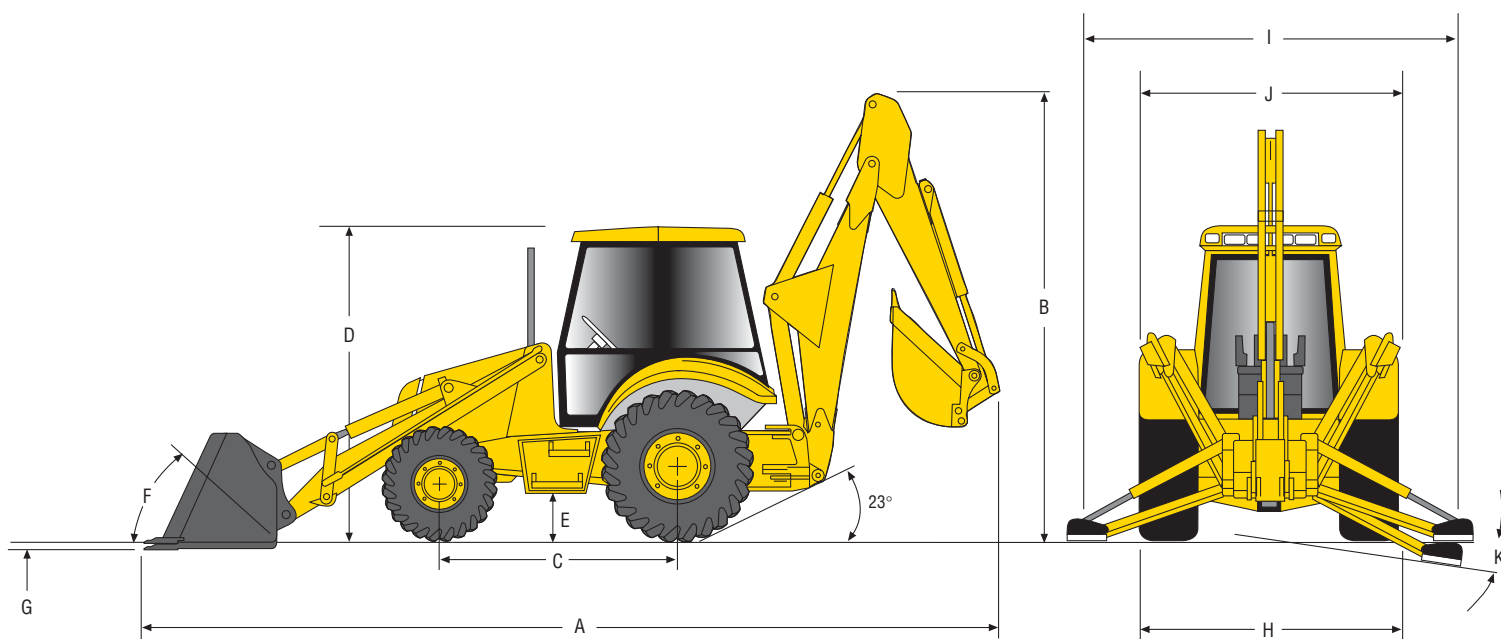
Alternator output	70 amps
Battery capacity (std/opt)	1,800/900 CCA

LB75.B TRANSMISSION

Manufacturer	Dana-Spicer
Type	Power-reversing/torque converter
Gear	4 F/4 R
4th	20/25 mph

LB75.B MANEUVERABILITY

	Less Brakes	With Split Brakes
2WD curb clearance	13'6"	12'7"
4WD curb clearance	15'9"	11'5"
2WD bucket clearance	17'9"	16'8"
4WD bucket clearance	19'5"	16'6"



LB90 DIMENSIONS

NEW HOLLAND CONSTRUCTION

LB90 DIMENSIONS

A	Overall length-transport	23'2" (7,066 mm)
B	Transport height	13'1" (3,988 mm)
C	Wheelbase	
	2WD	85.6" (2,175 mm)
	4WD	85.6" (2,175 mm)
D	Height to top of ROPS/Cab	9'6" (2,885 mm)
E	Ground clearance	15.5" (394 mm)
F	Bucket rollback	
	at ground level	36°
	raised	55°
G	Digging depth below grade	5" (131 mm)
H	Overall width-transport	7'5" (2,261 mm)
I	Stabilizer spread-operating	10'7" (3,226 mm)
J	Stabilizer spread-transport	7'5" (2,261 mm)
K	Stabilizer spread-leveling angle	14°

LB90 ENGINE

Horsepower, gross	98 hp (72 kW)
Make and model	New Holland BSD 450T
Type	Turbocharged, emissionized, direct injection, 4-cycle diesel
Governed RPM	2,200 RPM
Number of cylinders	4
Displacement	304 cu in (5.0 L)

LB90 PERFORMANCE

Horsepower (SAE J1349)	93 net (69 kW)
Torque	326 lbf-ft
@ Engine speed	1,400 RPM

LB90 WEIGHT

Base unit	14,714 lbs
With options added	
4wd	+386 lbs
Cab	+397 lbs
4x1	+1,256 lbs
6x1	+1,576 lbs
HED (counterweight)	+200 lbs

LB90 CYLINDER SPECS

Loader cylinder	3.14" bore x 26.9" stroke
Backhoe	
Boom cylinder	5.11" bore x 33.9" stroke
Arm cylinder	4.52" bore x 30.3" stroke
Bucket cylinder	3.54" bore x 30.0" stroke
Swing cylinder	4.33" bore x 9.33" stroke

LB90 SWING

Swing torque	5,800 lbf-ft
--------------	--------------

LB90 REFILL CAPACITIES

	US Gallons	(Liters)
Fuel tank	33.0 gal	(124.88 L)
Cooling system	6.5 gal	(24.59 L)
Engine oil includes filter	4.5 gal	(17.02 L)
Hydraulic tank	28.0 gal	(105.96 L)
Hydraulic system	38.0 gal	(143.80 L)

LB90 HYDRAULIC SYSTEM

System type	Open center
Pump type	Dual gear
Pump capacity	41 gpm
System relief pressure	3,045 psi

LB90 ELECTRICAL

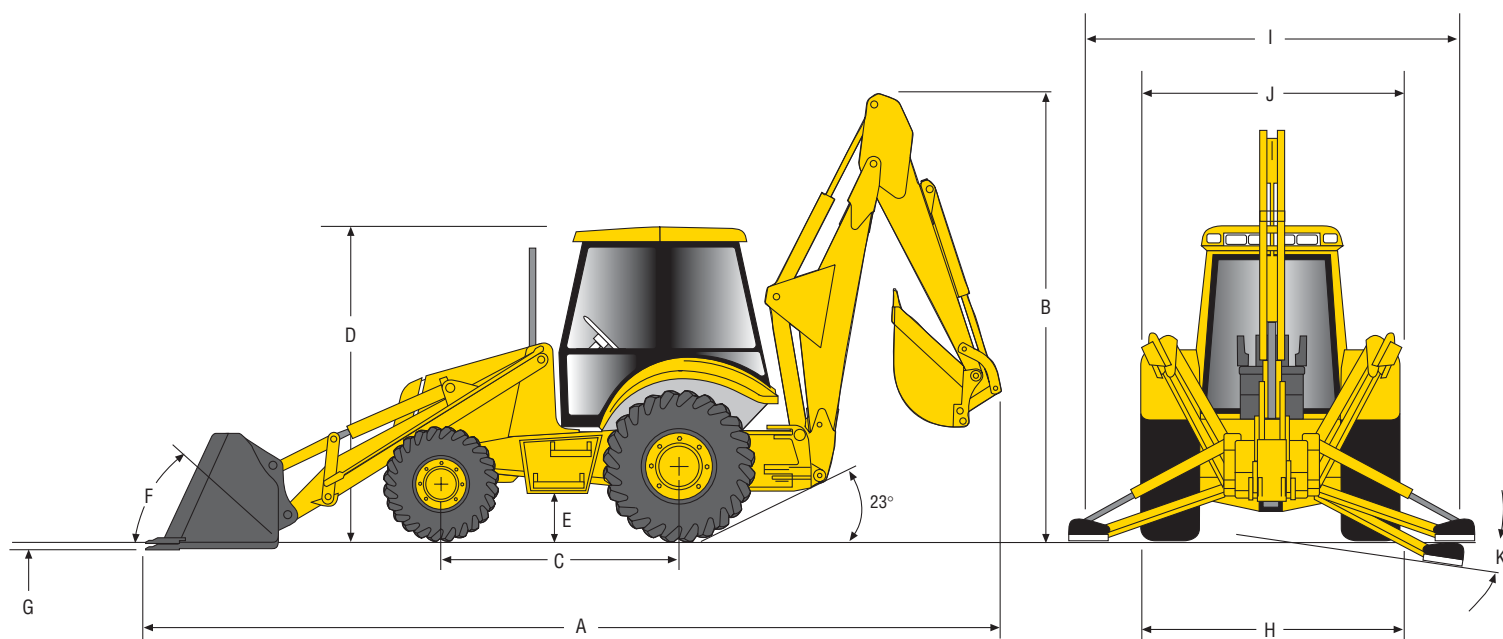
Alternator output	70 amps
Battery capacity (std/opt)	1,800/900 CCA

LB90 TRANSMISSION

Manufacturer	Dana-Spicer
Type	Power-reversing/torque converter
Gear	4 F/4 R
4th	20/25 mph

LB90 MANEUVERABILITY

	Less Brakes	With Split Brakes
2WD curb clearance	13'6"	12'7"
4WD curb clearance	15'9"	11'5"
2WD bucket clearance	17'9"	16'8"
4WD bucket clearance	19'5"	16'6"



NEW HOLLAND CONSTRUCTION

LB110 DIMENSIONS

LB110 DIMENSIONS

A	Overall length-transport	23'4" (7,108 mm)
B	Transport height	13'1" (3,988 mm)
C	Wheelbase	
	2WD	85.6" (2,175 mm)
	4WD	85.6" (2,175 mm)
D	Height to top of ROPS/Cab	9'6" (2,885 mm)
E	Ground clearance	15.5" (394 mm)
F	Bucket rollback	
	at ground level	36°
	raised	55°
G	Digging depth below grade	5" (131 mm)
H	Overall width-transport	7'5" (2,261 mm)
I	Stabilizer spread-operating	10'7" (3,226 mm)
J	Stabilizer spread-transport	7'5" (2,261 mm)
K	Stabilizer spread-leveling angle	14°

LB110 ENGINE

Horsepower, gross	108 hp (80.6 kW)
Make and model	New Holland BSD 450T
Type	Turbocharged, emissionized, direct injection, 4-cycle diesel
Governed RPM	2,200 RPM
Number of cylinders	4
Displacement	304 cu in (5.0 L)

LB110 PERFORMANCE

Horsepower (SAE J1349)	103 net (77 kW)
Torque	326 lbf-ft
@ Engine speed	1,400 RPM

LB110 WEIGHT

Base unit	14,814 lbs
With options added	
4wd	+386 lbs
Cab	+397 lbs
4x1	+1,256 lbs
6x1	+1,576 lbs
HED (counterweight)	+200 lbs

LB110 CYLINDER SPECS

Loader cylinder	3.14" bore x 26.9" stroke
Backhoe	
Boom cylinder	5.11" bore x 33.9" stroke
Arm cylinder	4.52" bore x 30.3" stroke
Bucket cylinder	3.54" bore x 30.0" stroke
Swing cylinder	4.33" bore x 9.33" stroke

LB110 SWING

Swing torque	5,800 lbf-ft
--------------	--------------

LB110 REFILL CAPACITIES

	US Gallons	(Liters)
Fuel tank	33.0 gal	(124.88 L)
Cooling system	6.5 gal	(24.59 L)
Engine oil includes filter	4.5 gal	(17.02 L)
Hydraulic tank	28.0 gal	(105.96 L)
Hydraulic system	38.0 gal	(143.80 L)

LB110 HYDRAULIC SYSTEM

System type	Open center
Pump type	Dual gear
Pump capacity	42 gpm
System relief pressure	3,045 psi

LB110 ELECTRICAL

Alternator output	70 amps
Battery capacity (std/opt)	1,800/900 CCA

LB110 TRANSMISSION

Manufacturer	Dana-Spicer/Clark-Hurth
Type	Pwr-reversing/torque conv (Powershift)
Gear	4 F/4 R – 4F/2R
4th	20/25 mph

LB110 MANEUVERABILITY

	Less Brakes	With Split Brakes
2WD curb clearance	13'6"	12'7"
4WD curb clearance	15'9"	11'5"
2WD bucket clearance	17'9"	16'8"
4WD bucket clearance	19'5"	16'6"

LB75.B, LB90 and LB110 STANDARD EQUIPMENT**Engine**

New Holland BSD 450 (LB75.B)
 New Holland BSD 450T turbocharged (LB90/LB110)
 Dry dual-element air cleaner
 Two-stage fuel filtering
 Pre-wired for ether starting aid
 Thermostat cold starting aid
 Metal fan guard

Transmission

Fully synchronized gearbox
 4 forward/4 reverse speeds
 Power-reversing torque converter

Rear axle/brakes

Planetary final drives
 Mechanically-actuated differential lock
 Electric differential lock on power shift
 Multi-plate, hydraulic, self-adjusting,
 self-equalizing wet disc brakes
 Independent parking/emergency brake

Front axle

73" tread width
 8-bolt wheel hubs
 Hydrostatic power steering with priority valve
 Integrated steering cylinder
 2WD axle: cast iron
 FWD axle: cast iron
 FWD electrical engagement with indicator light

Electrical

12-volt system
 70-amp high-capacity alternator
 Dual batteries with 1,800 CCA

Lighting

4 front/4 rear halogen worklights
 2 rear reflectors
 2 rear tail and turn indicators

Backhoe

Mechanical transport lock
 Flipover dirt/street stabilizer pads
 EasyTouch 2-lever controls (SAE pattern)
 Stabilizer lock valves

Operator's station (ROPS)

Dual side entry flat deck
 Interior rearview mirror
 Built-in beverage holder
 Key start switch with electric shut-off
 2-position horn control
 Electric instrumentation
 Tachometer/hourmeter
 Fuel gauge
 Tilt steering wheel
 Auxiliary 12-volt output/cigarette lighter
 Pre-wired for emergency beacon
 Pre-wired for road headlights
 Vinyl suspension seat
 3-inch retractable seatbelt

Operator's station (CAB)

CFC-free R134a air conditioning system
 (A/C only standard for LB90/110)
 Dual side entry flat deck
 Interior rearview mirror
 Built-in beverage holder
 Coat hook
 Pre-wired for radio
 Key start switch with electric shut-off
 Headliner
 2-position horn control
 Molded floor mat
 Electric instrumentation
 Tachometer/hourmeter
 Fuel gauge
 Interior dome light
 Tilt steering wheel
 Auxiliary 12-volt output/cigarette lighter

Pre-wired for emergency beacon
 Pre-wired for road headlights
 Adjustable side window openings
 One-piece rear window
 3-speed heater/blower fan
 Adjustable front sun-screen shade
 Cloth suspension seat
 3-inch retractable seatbelt

Loader

Straight-arm design
 4-Bar bucket linkage
 Bucket level indicator
 Return-to-dig feature
 Dual lift and bucket cylinders
 Hydromechanical self-leveling
 Single lever control
 Loader arm support
 1.3 yd³ heavy duty bucket

Hydraulics

O-ring Face seal connectors
 "PD" type diagnostic port connectors
 Open center coaxial drive hydraulic pump
 10 micron spin-on filter element

Total vehicle

Front counterweight
 Rear fenders
 Lockable integrated toolbox
 One-piece, unitized mainframe
 SMV emblem
 Front and rear tiedown points
 Audible backup alarm

Vandalism/security

Lockable control panel cover on ROPS
 Engine electrical disconnect switch
 Key-lockable engine side panels
 Key-lockable fuel cap
 Tamper-proof hydraulic reservoir cap

LB75.B, LB90 and LB110 OPTIONAL EQUIPMENT**Engine**

Ether cold start package
 110-volt engine block heater
 *Centrifugal dust bowl pre-cleaner

Transmission

Powershift (LB90/110) including:
 4 forward/2 reverse speeds
 Power-reversing torque converter
 Single lever F-N-R control with safety detent
 Two position electric disconnect on loader
 control and gearshift

Electrical

Single battery with 900 CCA

Lighting

Emergency beacon
 Road headlights (2)

Backhoe

*Mechanical backhoe bucket quick coupler
 4-lever backhoe controls
 2-lever ISO excavator pattern backhoe controls

HED extendible dipperstick
 Multiple bucket options from factory
 Heavy-duty and extra heavy-duty backhoe buckets

Operator's station (ROPS)

Electric ON/OFF control of hydraulic hand tool function
 Foot-activated switch control of backhoe hammer
 2-inch retractable seatbelt

Operator's station (CAB)

Electric ON/OFF control of hydraulic hand tool function
 Foot-activated switch control of backhoe hammer
 Operator cooling fan
 A/C for LB75.B

Loader

1.3 yd³ HD bucket w/forks
 Multi-purpose bucket (4X1)
 Multi-purpose bucket w/forks (6X1)
 Electro-hydraulic quick coupler

Hydraulics

Backhoe hammer circuit with flow control
 Mid-mount hand tool circuit with flow control

Extra function backhoe valve with control pedal
 (less HED)
 *Glide ride control system

Total vehicle

Fire extinguisher
 Special order paint colors
 *External rearview mirrors
 Front fenders
 *Operator cooling fan
 *4wd driveshaft guard kit

Vandalism/protection

*Steering cylinder lock

* Dealer installed option.



NEW HOLLAND CONSTRUCTION

Safety begins with a thorough understanding of the equipment. Always make sure you and your operators read the operator's manual before using the equipment. Pay close attention to all safety and operating decals and never operate machinery without all shields, protective devices and structures in place.

Visit our web site at www.newhollandconstruction.com
© 2001 New Holland Construction



New Holland Construction

245 E. North Avenue
Carol Stream, IL 60188-2099
866-726-3396 Toll Free
630-260-4000
630-260-4304 Fax
www.newhollandconstruction.com

61006579 • 100205 • API • Printed in U.S.A.

LB75.B, LB90 and LB110

Loader Backhoes

LB115.B

LB110

LB90

LB75.B

Your New Holland Construction Dealer:

