



NEW HOLLAND

LOADER BACKHOES



B95 B95TC B95LR
B110 B115

 **NEW HOLLAND**

www.newhollandconstruction.com

OUT-PUSH, OUT-DIG AND OUT-POWER THE REST

No matter what the task—digging, loading, trenching or pushing—you can depend on New Holland loader backhoes to get the job done fast. Take a closer look at the New Holland advantages that reduce your operating costs and deliver more value for your equipment dollar.

Superior power

- Turbo-charged 4.5-liter engines deliver the most horsepower in this class
- High-capacity hydraulics boost loading and digging cycle times
- Inline loader linkage and traditional geometry for awesome lift capacity

Superior dig forces

- Class-leading backhoe SAE dig force
- Fast swing and excellent craning ability
- Highest loader bucket breakout force in this power class

Better dump height and reach

- Maximum forward reach at maximum height
- Center-fill dump trucks with ease

The best visibility

- A superior view to both loader and backhoe buckets increases operator confidence and productivity

Easiest servicing

- The best ease-of-service rating based on SAE requirements
- All daily service points located on the left side
- Fill engine oil, hydraulic tank, fuel tank and transmission fluid from ground level
- An extended 500-hour oil change interval is a big maintenance money-saver
- Less maintenance time means more productive work time



New Holland loader backhoes have a strong and proud legacy with a heritage that began with a dedicated tractor loader backhoe introduced in 1966. Today we celebrate 40 years of loader backhoe history with five exciting models.

| Model | Gross Horsepower | Base Unit Weight | Backhoe Bucket Capacity | Loader SAE Heaped Capacity |
|--------------|------------------|----------------------|-----------------------------------|------------------------------------|
| B95 | 95 HP (71 kW) | 14,440 lbs (6549 kg) | 7.5 cu. ft. (.21 m ³) | 1.1 cu. yd. (.88 m ³) |
| B95TC | 95 HP (71 kW) | 16,567 lbs (7515 kg) | 7.5 cu. ft. (.21 m ³) | 1.3 cu. yd. (1.0 m ³) |
| B95LR | 95 HP (71 kW) | 14,460 lbs (6559 kg) | 7.5 cu. ft. (.21 m ³) | 1.1 cu. yd. (.88 m ³) |
| B110 | 110 HP (82 kW) | 14,814 lbs (6719 kg) | 7.5 cu. ft. (.21 m ³) | 1.3 cu. yd. (1.0 m ³) |
| B115 | 110 HP (82 kW) | 16,755 lbs (7600 kg) | 7.5 cu. ft. (.21 m ³) | 1.5 cu. yd. (1.13 m ³) |



Model B95 delivers an unmatched package of loader and backhoe performance, precise control, operator visibility, operator comfort and maintenance ease.

Model B95TC (Tool Carrier) features curved arms similar to the B115 and delivers true self leveling both up and down, making it perfect for use with forks. The B95TC includes a standard hydraulic quick coupler for easy attachment change.

Model B95LR (Long Reach) is the base B95 with the LB110 stick – making it a 15-foot machine. It's ideal for customers who want added reach at a lower price and with better fuel consumption than larger machines.



The New Holland backhoe boom is the narrowest on the market for excellent visibility and reduced operator fatigue.



360° visibility lets operators work with confidence. Controls are easy to reach and operate. Gauges are easy to read.



The one-piece, easy-open rear window moves up and out of the way for unobstructed visibility all the way into the trench.



Enjoy the view

New Holland loader backhoes deliver outstanding visibility no matter where you look, allowing you to work with confidence, even in confined spaces. New Holland loader backhoes sit higher to provide better visibility to the trench and work-site around you. The slim cab pillars, highly sloped hood and the narrow New Holland boom profile gives you a view to the front bucket that's the best in the business.



EFFORTLESS CONTROL

The large, roomy operator platform helps reduce fatigue and increase productivity.

Comfort in either direction

- Plenty of leg room and foot room, even as you turn the seat
- A simple click of a handle lets you easily spin the entire seat to face either the front loader or the rear backhoe
- A plush standard suspension seat and tilting steering wheel adjust to fit any operator
- An optional air-suspension seat provides even greater comfort in rough terrain

A more efficient you

- Easily reach every control in an instant—from the throttle and transmission shuttle lever to the lights, flashers and windshield wipers
- Optional pilot control pillars are infinitely adjustable to accommodate any size operator
- Large instrumentation is easy to read at a glance
- Two standard doors for easy entry from either side
- High-output HVAC system provides quick cab warm-up or cool-down

Automatic shifting on the jobsite

- Sophisticated 4x2 powershift transmission with automatic shifting is standard on B115 and optional on B110
- Features automatic four-wheel-drive and kick-down for effortless shifting over any terrain
- Gear selection display

One-lever loader control

- Dig, load and dump with low effort and high precision
- Pull back to raise the bucket, push forward to lower it
- Disconnect the transmission and direct full power to the loader with the push of a button

Your choice of five backhoe controls

- Select mechanical two-lever SAE, two-lever ISO, three-lever with footswing, four-lever control or pilot control with standard pattern changer
- Exceptional control feedback allows you to actually feel trench obstructions with your fingertips

MORE REACH, MORE CAPACITY

New Holland loader backhoes deliver the power and working efficiency to make you more productive—day after day, job after job.

Reach higher and farther

- Excellent reach at maximum dump height to make grapple and bucket work easier
- Place loads exactly where you want them

Superior backhoe dig force

- Excellent for high-production trenching or digging
- Unmatched dig force and crowd power
- Fast backhoe swing improves cycle times
- Wedge-style backhoe bucket reduces heel drag to effectively undercut when needed
- Narrow, high-strength box section boom offers greater visibility

Superior loader breakout force

- Straight-arm loader linkage and dual cylinders deliver unmatched lift capacity, bucket rotation and breakout force
- A massive, integral loader tower and oversized torque tube provide the rigidity and strength needed for high capacity
- Buckets feature a functional backdrag heel for productive backfilling and scraping

A smooth, stable ride

- Operate on uneven terrain with stability and confidence
- Optional four-wheel-drive for traction in tough conditions
- All models feature full hydraulic, self-equalizing and self-adjusting wet rear disc brakes



Optional Glide Ride

The Glide Ride option lets you carry a heavy, loaded bucket over rough terrain with reduced spilling and a smoother ride. An accumulator stabilizes the load, ensuring that shocks and vibrations are not transferred to the machine.



| Model | Backhoe Bucket Dig Force | Maximum Backhoe Dig Depth | Loader Bucket Breakout Force | Loader Lift Capacity to Full Height |
|--------------|--------------------------|---------------------------|------------------------------|-------------------------------------|
| B95 | 12,808 lbs (5810 kg) | 17 ft. 11 in. (5464 mm) | 13,942 lbs (6324 kg) | 7,782 lbs (3529 kg) |
| B95TC | 12,808 lbs (5810 kg) | 17 ft. 11 in. (5464 mm) | 12,030 lbs (5456 kg) | 7,782 lbs (3529 kg) |
| B95LR | 12,808 lbs (5810 kg) | 18 ft. 10 in. (5758 mm) | 13,942 lbs (6324 kg) | 7,782 lbs (3529 kg) |
| B110 | 12,808 lbs (5810 kg) | 18 ft. 11 in. (5776 mm) | 13,942 lbs (6324 kg) | 7,782 lbs (3529 kg) |
| B115 | 12,167 lbs (5519 kg) | 19 ft. 1 in. (5790 mm) | 12,165 lbs (5518 kg) | 7,464 lbs (3386 kg) |



Precision swing control delivers better operation in tight areas.



New Holland loader backhoes lead the industry in loader breakout force to excel in tough digging conditions.



The straight boom is light but strong, providing industry-leading lift specifications and optimum strength both in tension and compression stages of the cycle. The dipper and boom cylinder forces combine at one pin, simplifying and reducing load on the boom.



Lockable engine side panels are easy to remove for quick access to all engine components, with loader arms up or down.



Easy to service

New Holland loader backhoes allow simple routine maintenance. All daily service points are conveniently located at ground level on the left-hand side of the machine. Diagnostic test port under the left engine panel provides easy system pressure checks.



RELIABILITY DAY IN AND DAY OUT

New Holland loader backhoes thrive on hard work and demanding conditions.

Tough construction

- Massive one-piece box section steel main frame
- Tough, double-reduction front axles deliver high torque transfer to the ground, without compromising ground clearance
- Reliable in-board planetary rear axles provide years of service in harsh working conditions

Long-life engines

- Advanced 4.5-liter turbocharged New Holland engines use heavy-duty valve train components and a self-adjusting poly V-belt for durability
- Oil jets cool the underside of the pistons for perfect temperature control—a feature usually reserved for higher horsepower engines
- Bosch injection pumps provide virtually smoke-free start ups

Superior cooling

- Coolers are stacked with tubes arranged in an inline “flow through” design for easy cleaning
- Designed to work in consistent 100° F temperatures

Fast-response hydraulics

- An advanced, open-center hydraulic system uses a clean, simple design with fewer parts than competitive closed-center systems
- Dual gear pumps deliver impressive hydraulic flow of up to 42 gallons per minute



Extra-strong grill and cast-iron nose provides added durability in loader applications.

A VARIETY OF ATTACHMENTS MEANS MORE VERSATILITY

Quick-change loader attachments

An optional auxiliary hydraulic circuit can be used with a mechanical quick-attach system or an electro-hydraulic quick coupler for fast and easy hookup to many attachments, including:

- Sweeper brooms
- Angle dozer
- Four-in-one bucket
- Snow blower
- Scrap grapple
- Forks
- Auger

Backhoe attachments include:

- Backfill blade
- Cemetery bucket
- Pavement-removal bucket
- Ripper teeth
- V-ditching bucket

Hydraulic quick-coupler is standard on B95TC. A mechanical quick-coupler is optional on other models.

Optional auxiliary backhoe hydraulics

Auxiliary backhoe hydraulics further expand your versatility. A foot pedal in the cab activates the auxiliary hydraulics to run these backhoe attachments:

- Hydraulic breaker
- Hydraulic compactor
- Hydraulic auger
- Hydraulic thumb

Hand-tool attachments

An optional hand-tool circuit conveniently located on the front left side of the machine provides a convenient power source for hydraulic hand-tools like these:

- Posthole digger
- Hand-held breaker
- Chop saw
- Cable cutter
- Chain saw
- Hydraulic trash pump
- Hand-held compactor

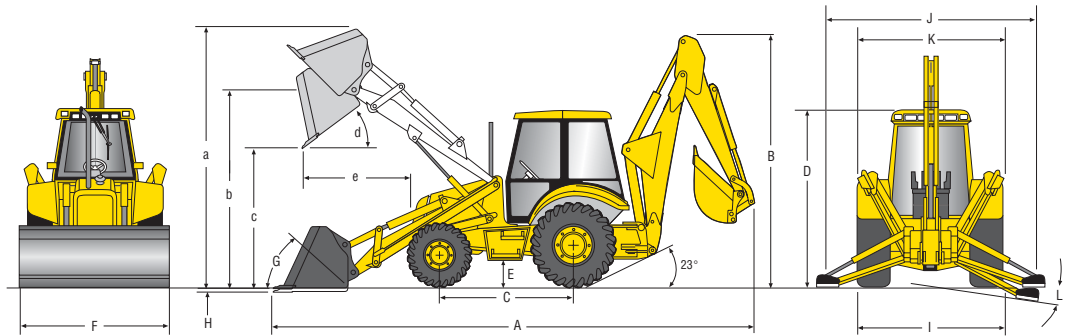
Note: Some photographs in this literature depict New Holland loader backhoes equipped with optional equipment. See your New Holland dealer for details.





B95 Specifications

DIMENSIONS



DIMENSIONS

| | | | |
|--|---------------|--|---------------|
| A. Transport length, ft/in (mm) | 23' 3" (7075) | G. Bucket Rollback At ground level | 39° |
| B. Transport height, ft/in (mm) | 13' 1" (3965) | Raised | 55° |
| C. Wheelbase, ft/in (mm) | | H. Digging depth below grade, in (mm) | 5" (131) |
| 2WD | 85.6" (2175) | I. Transport width, ft/in (mm) | 7' 5" (2261) |
| 4WD | 85.6" (2175) | J. Stabilizer spread, operating, ft/in (mm) | 10' 7" (3226) |
| D. Height to top of cab, ft/in (mm) | 9' 6" (2885) | K. Stabilizer spread, transport, ft/in (mm) | 7' 5" (2261) |
| E. Ground Clearance, in (mm) | 15.5" (394) | L. Stabilizer spread, leveling angle | 14° |
| F. Blade width, in (mm) | 87" (2215) | | |

LOADER DIMENSIONS

| | 1.1 cu yd Heavy-Duty General Purpose | 1.3 cu yd Heavy-Duty General Purpose | Multi-Purpose (4x1) | Multi-Purpose (6x1) |
|--|---|---|---------------------|---------------------|
| a. Max operating height, ft/in (mm) | 14' 0" (4284) | 14' 0" (4284) | 14' 0" (4284) | 14' 0" (4284) |
| b. Height to hinge pin, ft/in (mm) | 11' 4" (3456) | 11' 4" (3456) | 11' 4" (3456) | 11' 4" (3456) |
| c. Dump height, ft/in (mm) | 8' 11" (2710) | 8' 11" (2710) | 8' 10" (2702) | 8' 10" (2702) |
| d. Max dump angle | 45° | 45° | 45° | 45° |
| e. Reach @ 45 degree dump angle, ft/in (mm) | 2' 7" (795) | 2' 7" (795) | 2' 5" (732) | 2' 7" (795) |
| Max grading angle | 130° | 130° | 130° | 130° |

LOADER PERFORMANCE

| | 1.1 cu yd Heavy-Duty General Purpose | 1.3 cu yd Heavy-Duty General Purpose | Multi-Purpose (4x1) | Multi-Purpose (6x1) |
|--|---|---|---------------------|---------------------|
| Linkage geometry | straight | straight | straight | straight |
| Max bucket heaped capacity, cu yd (m³) | 1.1 (.88) | 1.3 (1.0) | 1.3 (1.0) | 1.3 (1.0) |
| Bucket breakout force, lbs (kg) | 15,057 (6830) | 13,942 (6324) | 14,056 (6375) | 14,056 (6375) |
| Lift capacity to full height, lbs (kg) | 7,943 (3603) | 7,782 (3529) | 7,454 (3160) | 7,176 (3254) |
| SAE heaped capacity, cu yd (m³) | 1.1 (.88) | 1.3 (1.0) | 1.3 (1.0) | 1.3 (1.0) |
| SAE struck capacity, cu yd (m³) | .91 (.73) | 1.07 (.82) | 1.07 (.82) | 1.07 (.82) |
| Bucket weight, lbs (kg) | 694 (315) | 881.5 (400) | 1,576 (715) | 1,576 (715) |
| Cutting width, in (mm) | 88 (2250) | 88 (2250) | 88 (2250) | 88 (2250) |
| Cycle | | | | |
| Raise to full height | 4.4 sec | 4.4 sec | 4.4 sec | 4.4 sec |
| Dump time | 1.2 sec | 1.2 sec | 1.2 sec | 1.2 sec |
| Lower | 2.7 sec | 2.7 sec | 2.7 sec | 2.7 sec |

Unit equipped with 12-16.5 front tire, 19.5L-24 rear tire

B95 Specifications

WEIGHT

| | |
|---------------------------|------------|
| Base Unit | 14,440 lbs |
| With options added | |
| 4WD | +386 lbs |
| Cab | +397 lbs |
| 4x1 | +860 lbs |
| 6x1 | +1,212 lbs |
| HED (counterweight) | +200 lbs |

TRANSMISSION

| | |
|--|-----------------------------|
| Manufacturer | Turner |
| Transmission type | Power-reversing/torque conv |
| Power shuttle standard | Yes |
| Gear 4F/4R | |
| Max travel speed, FWD, mph (kph) | 20 (32.2) |
| Front tire size, 4WD | 12-16.5 |
| Rear tires size, 4WD | 19.5L-24 |

ENGINE

| | |
|--------------------------------------|--|
| Make and model | New Holland 445T/M2 |
| Type | Tier II emissionized, direct injection, 4-cycle diesel |
| Aspiration | Turbocharged |
| Governed RPM | 2200 RPM |
| Number of cylinders | 4 |
| Displacement, cu in (L) | 273 (4.5) |
| Horsepower, gross, hp (kW) | 95 (71) |
| Horsepower, net hp (kW) | 89 (66) |
| Peak torque, lb-ft (N-m) @ RPM | 294 (398) @ 1400 |

MANEUVERABILITY

| | Less Brakes | With Split Brakes |
|----------------------------|-------------|-------------------|
| 2WD curb clearance | 13' 6" | 12' 7" |
| 4WD curb clearance | 15' 9" | 11' 5" |
| 2WD bucket clearance | 17' 9" | 16' 8" |
| 4WD bucket clearance | 19' 5" | 16' 6" |

HYDRAULIC SYSTEM

| | |
|-------------------------------|-------------|
| System type | Open center |
| Main pump type | Dual gear |
| Pump capacity gpm (lpm) | 40 (151) |
| System relief pressure | 3,045 psi |

ELECTRICAL

| | |
|----------------------------------|---------------|
| Alternator output | 90 amps |
| Battery capacity (std/opt) | 1,200/900 CCA |

REFILL CAPACITIES

| | |
|--|------------|
| Fuel tank, gal (L) | 35.6 (135) |
| Cooling system, gal (L) | 6.4 (24) |
| Engine oil, includes filter, gal (L) | 3.6 (13.6) |
| Hydraulic tank, gal (L) | 21 (80) |
| Hydraulic system, gal (L) | 31 (118) |

SWING

| | |
|--------------------|---------------|
| Swing force | 5,800 lbf-ft |
| Swing torque | 20,390 lbf-ft |

CYLINDER SPECS

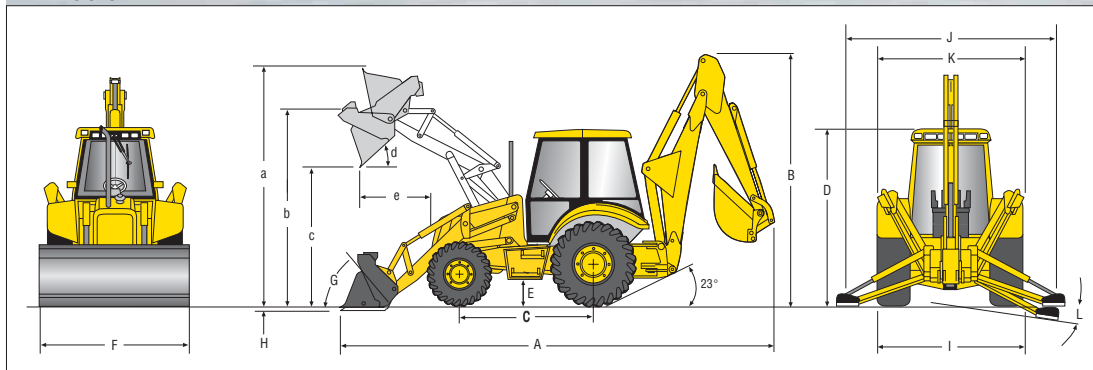
| | |
|-----------------------|---------------------------|
| Loader cylinder | 3.14" bore x 26.9" stroke |
| Backhoe | |
| Boom cylinder | 5.11" bore x 33.9" stroke |
| Arm cylinder | 4.52" bore x 30.3" stroke |
| Bucket cylinder | 3.54" bore x 30.0" stroke |
| Swing cylinder | 4.33" bore x 9.33" stroke |

SERVICE INTERVALS

| | |
|----------------------------|-------------|
| Engine oil | 500 hours |
| Hydraulic oil filter | 1,000 hours |
| Engine coolant | 2,000 hours |
| Rear axle oil | 1,000 hours |

B95TC Specifications

DIMENSIONS



DIMENSIONS

| | | | |
|--|---------------|--|---------------|
| A. Transport length, ft/in (mm) | 23' 9" (7284) | G. Bucket Rollback | |
| B. Transport height, ft/in (mm) | 13' 1" (3965) | At ground level | 44° |
| C. Wheelbase, ft/in (mm) | | Raised | 59° |
| 2WD | 85.6" (2175) | H. Digging depth below grade, in (mm) | 7.5" (190) |
| 4WD | 85.6" (2175) | I. Transport width, ft/in (mm) | 7' 5" (2261) |
| D. Height to top of cab, ft/in (mm) | 9' 6" (2885) | J. Stabilizer spread, operating, ft/in (mm) | 10' 7" (3226) |
| E. Ground Clearance, in (mm) | 15.5" (394) | K. Stabilizer spread, transport, ft/in (mm) | 7' 5" (2261) |
| F. Blade width, in (mm) | 87" (2215) | L. Stabilizer spread, leveling angle | 14° |

LOADER DIMENSIONS

| | 1.3 cu yd Heavy-Duty General Purpose | Multi-Purpose (4x1) |
|--|---|---------------------|
| a. Max operating height, ft/in (mm) | 14' 3" (4361) | 14' 0" (4284) |
| b. Height to hinge pin, ft/in (mm) | 11' 1" (3384) | 11' 4" (3456) |
| c. Dump height, ft/in (mm) | 8' 1" (2463) | 8' 10" (2702) |
| d. Max dump angle | 45° | 45° |
| e. Reach @ 45 degree dump angle, ft/in (mm) | 3' 5" (1064) | 2' 5" (732) |
| Max grading angle | 130° | 130° |

LOADER PERFORMANCE

| | 1.3 cu yd Heavy-Duty General Purpose | Multi-Purpose (4x1) |
|--|---|---------------------|
| Linkage geometry | 4-bar | 4-bar |
| Max bucket heaped capacity, cu yd (m³) | 1.3 (1.0) | 1.3 (1.0) |
| Bucket breakout force, lbs (kg) | 12,030 (5456) | 14,056 (6375) |
| Lift capacity to full height, lbs (kg) | 7,209 (3270) | 7,454 (3381) |
| SAE heaped capacity, cu yd (m³) | 1.3 (1.0) | 1.3 (1.0) |
| SAE struck capacity, cu yd (m³) | 1.07 (.82) | 1.07 (.82) |
| Bucket weight, lbs (kg) | 950 (431) | 1,790 (812) |
| Cutting width, in (mm) | 88 (2250) | 88 (2250) |
| Cycle | | |
| Raise to full height | 3.5 sec | 4.4 sec |
| Dump time | 2.2 sec | 1.2 sec |
| Lower | 2.8 sec | 3.4 sec |

Unit equipped with 12-16.5 front tire, 19.5L-24 rear tire

B95TC Specifications

WEIGHT

| | |
|---------------------------|------------|
| Base Unit | 16,567 lbs |
| With options added | |
| 4WD | +386 lbs |
| Cab | +397 lbs |
| 4x1 | +1,790 lbs |
| 6x1 | +1,576 lbs |
| HED (counterweight) | +200 lbs |

TRANSMISSION

| | |
|--|-----------------------------|
| Manufacturer | Turner |
| Transmission type | Power-reversing/torque conv |
| Power shuttle standard | Yes |
| Gear 4F/4R | |
| Max travel speed, FWD, mph (kph) | 20 (32.2) |
| Front tire size, 4WD | 12-16.5 |
| Rear tires size, 4WD | 19.5L-24 |

ENGINE

| | |
|--------------------------------------|--|
| Make and model | New Holland 445T/M2 |
| Type | Tier II emissionized, direct injection, 4-cycle diesel |
| Aspiration | Turbocharged |
| Governed RPM | 2200 RPM |
| Number of cylinders | 4 |
| Displacement, cu in (L) | 273 (4.5) |
| Horsepower, gross, hp (kW) | 95 (71) |
| Horsepower, net, hp (kW) | 89 (66) |
| Peak torque, lb-ft (N-m) @ RPM | 294 (398) @ 1400 |

MANEUVERABILITY

| | Less Brakes | With Split Brakes |
|----------------------------|-------------|-------------------|
| 2WD curb clearance | 13' 6" | 12' 7" |
| 4WD curb clearance | 15' 9" | 11' 5" |
| 2WD bucket clearance | 17' 9" | 16' 8" |
| 4WD bucket clearance | 19' 5" | 16' 6" |

HYDRAULIC SYSTEM

| | |
|-------------------------------|-------------|
| System type | Open center |
| Main pump type | Dual gear |
| Pump capacity gpm (lpm) | 40 (151) |
| System relief pressure | 3,045 psi |

ELECTRICAL

| | |
|----------------------------------|---------------|
| Alternator output | 90 amps |
| Battery capacity (std/opt) | 1,200/900 CCA |

REFILL CAPACITIES

| | |
|--|------------|
| Fuel tank, gal (L) | 35.6 (135) |
| Cooling system, gal (L) | 6.4 (24) |
| Engine oil, includes filter, gal (L) | 3.6 (13.6) |
| Hydraulic tank, gal (L) | 21 (80) |
| Hydraulic system, gal (L) | 31 (118) |

SWING

| | |
|--------------------|---------------|
| Swing force | 5,800 lbf-ft |
| Swing torque | 20,901 lbf-ft |

CYLINDER SPECS

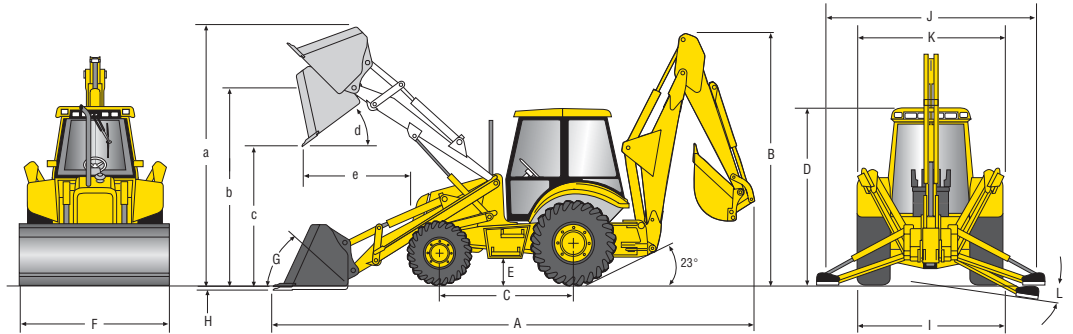
| | |
|-----------------------|---------------------------|
| Loader cylinder | 3.14" bore x 26.9" stroke |
| Backhoe | |
| Boom cylinder | 5.11" bore x 33.9" stroke |
| Arm cylinder | 4.52" bore x 30.3" stroke |
| Bucket cylinder | 3.54" bore x 30.0" stroke |
| Swing cylinder | 4.33" bore x 9.33" stroke |

SERVICE INTERVALS

| | |
|----------------------------|-------------|
| Engine oil | 500 hours |
| Hydraulic oil filter | 1,000 hours |
| Engine coolant | 2,000 hours |
| Rear axle oil | 1,000 hours |

B95LR Specifications

DIMENSIONS



DIMENSIONS

| | | | |
|--|---------------|--|---------------|
| A. Transport length, ft/in (mm) | 23' 3" (7075) | G. Bucket Rollback At ground level | 36° |
| B. Transport height, ft/in (mm) | 13' 1" (3965) | Raised | 55° |
| C. Wheelbase, ft/in (mm) | | H. Digging depth below grade, in (mm) | 5" (131) |
| 2WD | 85.6" (2175) | I. Transport width, ft/in (mm) | 7' 5" (2261) |
| 4WD | 85.6" (2175) | J. Stabilizer spread, operating, ft/in (mm) | 10' 7" (3226) |
| D. Height to top of cab, ft/in (mm) | 9' 6" (2885) | K. Stabilizer spread, transport, ft/in (mm) | 7' 5" (2261) |
| E. Ground Clearance, in (mm) | 15.5" (394) | L. Stabilizer spread, leveling angle | 14° |
| F. Blade width, in (mm) | 87" (2215) | | |

LOADER DIMENSIONS

| | 1.1 cu yd Heavy-Duty General Purpose | 1.3 cu yd Heavy-Duty General Purpose | Multi-Purpose (4x1) | Multi-Purpose (6x1) |
|--|---|---|---------------------|---------------------|
| a. Max operating height, ft/in (mm) | 14' 0" (4284) | 14' 0" (4284) | 14' 0" (4284) | 14' 0" (4284) |
| b. Height to hinge pin, ft/in (mm) | 11' 4" (3456) | 11' 4" (3456) | 11' 4" (3456) | 11' 4" (3456) |
| c. Dump height, ft/in (mm) | 8' 11" (2710) | 8' 11" (2710) | 8' 10" (2702) | 8' 10" (2702) |
| d. Max dump angle | 45° | 45° | 45° | 45° |
| e. Reach @ 45 degree dump angle, ft/in (mm) | 2' 7" (795) | 2' 7" (795) | 2' 5" (732) | 2' 7" (795) |
| Max grading angle | 130° | 130° | 130° | 130° |

LOADER PERFORMANCE

| | 1.1 cu yd Heavy-Duty General Purpose | 1.3 cu yd Heavy-Duty General Purpose | Multi-Purpose (4x1) | Multi-Purpose (6x1) |
|--|---|---|---------------------|---------------------|
| Linkage geometry | straight | straight | straight | straight |
| Max bucket heaped capacity, cu yd (m³) | 1.1 (.88) | 1.3 (1.0) | 1.3 (1.0) | 1.3 (1.0) |
| Bucket breakout force, lbs (kg) | 15,057 (6830) | 13,942 (6324) | 14,056 (6375) | 14,056 (6375) |
| Lift capacity to full height, lbs (kg) | 7,943 (3603) | 7,782 (3529) | 7,454 (3160) | 7,176 (3254) |
| SAE heaped capacity, cu yd (m³) | 1.1 (.88) | 1.3 (1.0) | 1.3 (1.0) | 1.3 (1.0) |
| SAE struck capacity, cu yd (m³) | .91 (.73) | 1.07 (.82) | 1.07 (.82) | 1.07 (.82) |
| Bucket weight, lbs (kg) | 694 (315) | 881.5 (400) | 1,576 (715) | 1,576 (715) |
| Cutting width, in (mm) | 88 (2250) | 88 (2250) | 88 (2250) | 88 (2250) |
| Cycle | | | | |
| Raise to full height | 4.4 sec | 4.4 sec | 4.4 sec | 4.4 sec |
| Dump time | 1.2 sec | 1.2 sec | 1.2 sec | 1.2 sec |
| Lower | 2.7 sec | 2.7 sec | 2.7 sec | 2.7 sec |

Unit equipped with 12-16.5 front tire, 19.5L-24 rear tire

B95LR Specifications

WEIGHT

| | |
|---------------------------|------------|
| Base Unit | 14,460 lbs |
| With options added | |
| 4WD | +386 lbs |
| Cab | +397 lbs |
| 4x1 | +860 lbs |
| 6x1 | +1,212 lbs |
| HED (counterweight) | +200 lbs |

TRANSMISSION

| | |
|--|-----------------------------|
| Manufacturer | Turner |
| Transmission type | Power-reversing/torque conv |
| Power shuttle standard | Yes |
| Gear 4F/4R | |
| Max travel speed, FWD, mph (kph) | 20 (32.2) |
| Front tire size, 4WD | 12-16.5 |
| Rear tires size, 4WD | 19.5L-24 |

ENGINE

| | |
|--------------------------------------|--|
| Make and model | New Holland 445T/M2 |
| Type | Tier II emissionized, direct injection, 4-cycle diesel |
| Aspiration | Turbocharged |
| Governed RPM | 2200 RPM |
| Number of cylinders | 4 |
| Displacement, cu in (L) | 273 (4.5) |
| Horsepower, gross, hp (kW) | 95 (71) |
| Horsepower, net, hp (kW) | 89 (66) |
| Peak torque, lb-ft (N-m) @ RPM | 294 (398) @ 1400 |

MANEUVERABILITY

| | Less Brakes | With Split Brakes |
|----------------------------|-------------|-------------------|
| 2WD curb clearance | 13' 6" | 12' 7" |
| 4WD curb clearance | 15' 9" | 11' 5" |
| 2WD bucket clearance | 17' 9" | 16' 8" |
| 4WD bucket clearance | 19' 5" | 16' 6" |

HYDRAULIC SYSTEM

| | |
|-------------------------------|-------------|
| System type | Open center |
| Main pump type | Dual gear |
| Pump capacity gpm (lpm) | 40 (151) |
| System relief pressure | 3,045 psi |

ELECTRICAL

| | |
|----------------------------------|---------------|
| Alternator output | 90 amps |
| Battery capacity (std/opt) | 1,200/900 CCA |

REFILL CAPACITIES

| | |
|--|------------|
| Fuel tank, gal (L) | 35.6 (135) |
| Cooling system, gal (L) | 6.4 (24) |
| Engine oil, includes filter, gal (L) | 3.6 (13.6) |
| Hydraulic tank, gal (L) | 21 (80) |
| Hydraulic system, gal (L) | 31 (118) |

SWING

| | |
|--------------------|---------------|
| Swing force | 5,800 lbf-ft |
| Swing torque | 20,390 lbf-ft |

CYLINDER SPECS

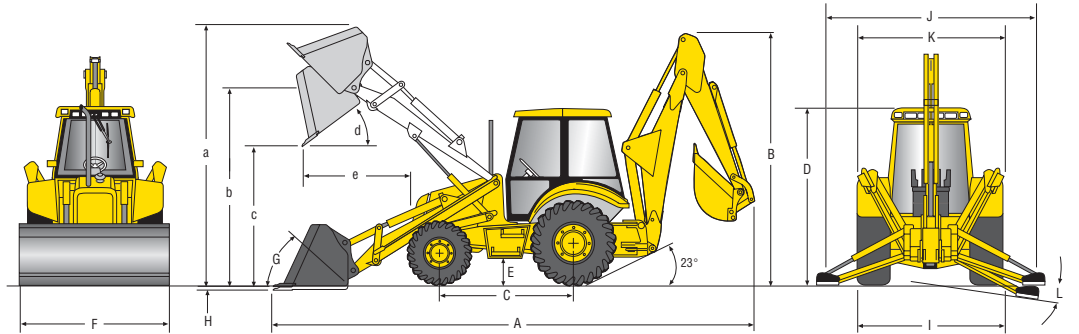
| | |
|-----------------------|---------------------------|
| Loader cylinder | 3.14" bore x 26.9" stroke |
| Backhoe | |
| Boom cylinder | 5.11" bore x 33.9" stroke |
| Arm cylinder | 4.52" bore x 30.3" stroke |
| Bucket cylinder | 3.54" bore x 30.0" stroke |
| Swing cylinder | 4.33" bore x 9.33" stroke |

SERVICE INTERVALS

| | |
|----------------------------|-------------|
| Engine oil | 500 hours |
| Hydraulic oil filter | 1,000 hours |
| Engine coolant | 2,000 hours |
| Rear axle oil | 1,000 hours |

B110 Specifications

DIMENSIONS



DIMENSIONS

| | | | |
|--|----------------|--|---------------|
| A. Transport length, ft/in (mm) | 23' 4" (7108) | G. Bucket Rollback | |
| B. Transport height, ft/in (mm) | 13' 1" (3965) | At ground level | 39° |
| C. Wheelbase, ft/in (mm) | | Raised | 55° |
| 2WD | 85.6" (2175) | H. Digging depth below grade, in (mm) | 5" (131) |
| 4WD | 85.6" (2175) | I. Transport width, ft/in (mm) | 7' 5" (2261) |
| D. Height to top of cab, ft/in (mm) | 9' 5.6" (2890) | J. Stabilizer spread, operating, ft/in (mm) | 10' 7" (3226) |
| E. Ground Clearance, in (mm) | 15.5" (394) | K. Stabilizer spread, transport, ft/in (mm) | 7' 5" (2261) |
| F. Blade width, in (mm) | 87" (2215) | L. Stabilizer spread, leveling angle | 14° |

LOADER DIMENSIONS

| | Heavy-Duty General Purpose | Multi-Purpose (4x1) | Multi-Purpose (6x1) |
|--|----------------------------|---------------------|---------------------|
| a. Max operating height, ft/in (mm) | 14' 0" (4284) | 14' 0" (4284) | 14' 0" (4284) |
| b. Height to hinge pin, ft/in (mm) | 11' 4" (3456) | 11' 4" (3456) | 11' 4" (3456) |
| c. Dump height, ft/in (mm) | 8' 10" (2702) | 8' 10" (2702) | 8' 10" (2702) |
| d. Max dump angle | 45° | 45° | 45° |
| e. Reach @ 45 degree dump angle, ft/in (mm) | 2' 5" (732) | 2' 5" (732) | 2' 7" (795) |
| Max grading angle | 130° | 130° | 130° |

LOADER PERFORMANCE

| | Heavy-Duty General Purpose | Multi-Purpose (4x1) | Multi-Purpose (6x1) |
|--|----------------------------|---------------------|---------------------|
| Linkage geometry | straight | straight | straight |
| Max bucket heaped capacity, cu yd (m³) | 1.3 (1.0) | 1.3 (1.0) | 1.3 (1.0) |
| Bucket breakout force, lbs (kg) | 13,942 (6324) | 14,056 (6375) | 14,056 (6375) |
| Lift capacity to full height, lbs (kg) | 7,782 (3529) | 7,130 (3234) | 6,823 (3095) |
| SAE heaped capacity, cu yd (m³) | 1.3 (1.0) | 1.3 (1.0) | 1.3 (1.0) |
| SAE struck capacity, cu yd (m³) | 1.07 (.82) | 1.07 (.82) | 1.07 (.82) |
| Bucket weight, lbs (kg) | 881.5 (400) | 1,630 (740) | 1,984 (900) |
| Cutting width, in (mm) | 88 (2250) | 88 (2250) | 88 (2250) |
| Cycle | | | |
| Raise to full height | 4.4 sec | 4.4 sec | 4.4 sec |
| Dump time | 1.2 sec | 1.2 sec | 1.2 sec |
| Lower | 2.7 sec | 2.7 sec | 2.7 sec |

Unit equipped with 12-16.5 front tire, 19.5L-24 rear tire

B110 Specifications

WEIGHT

| | |
|---------------------------------------|---------------|
| Base Unit | 14,814 lbs |
| Operating weight, 4WD, lbs (kg) | 15,200 (6895) |
| With options added | |
| 4WD | +386 lbs |
| Cab | +397 lbs |
| 4x1 | +1,256 lbs |
| 6x1 | +1,576 lbs |
| HED (counterweight) | +200 lbs |

TRANSMISSION

| | |
|--|--|
| Manufacturer | Turner (Clark-Hurth) |
| Transmission type | Power-reversing/torque conv (Powershift) |
| Power shuttle standard | Yes |
| Gear | 4F/4R-4F/2R |
| Max travel speed, FWD, mph (kph) | 20 (32.2)/26 (41.4) |
| Front tire size, 4WD | 14-17.5 / 14-17.5 / 12-16.5 (Galaxy) |
| Rear tires size, 4WD | 21L-24 / 16.9-28 / 19.5L-24 (Galaxy) |

ENGINE

| | |
|--------------------------------------|--|
| Make and model | New Holland 445T/M2 |
| Type | Tier II emissionized, direct injection, 4-cycle diesel |
| Aspiration | Turbocharged after cooled |
| Governed RPM | 2200 RPM |
| Number of cylinders | 4 |
| Displacement, cu in (L) | 273 (4.5) |
| Horsepower, gross, hp (kW) | 110 (82) |
| Horsepower, net, hp (kW) | 108 (80) |
| Peak torque, lb-ft (N-m) @ RPM | 354 (480) @ 1400 |

MANEUVERABILITY

| | Less Brakes | With Split Brakes |
|--|-------------|-------------------|
| 2WD curb clearance | 13' 6" | 12' 7" |
| 4WD curb clearance | 15' 9" | 11' 5" |
| 2WD bucket clearance | 17' 9" | 16' 8" |
| 4WD bucket clearance | 19' 5" | 16' 6" |
| Turning radius at curb, 4WD brakes applied, ft/in (mm) 11' 5" (3480) | | |

HYDRAULIC SYSTEM

| | |
|-------------------------------|-------------|
| System type | Open center |
| Main pump type | Dual gear |
| Pump capacity gpm (lpm) | 42 (159) |
| System relief pressure | 3,045 psi |

ELECTRICAL

| | |
|----------------------------------|---------------|
| Alternator output | 90 amps |
| Battery capacity (std/opt) | 1,200/900 CCA |

REFILL CAPACITIES

| | |
|--|------------|
| Fuel tank, gal (L) | 35.6 (135) |
| Cooling system, gal (L) | 6.4 (24) |
| Engine oil, includes filter, gal (L) | 3.6 (13.6) |
| Hydraulic tank, gal (L) | 21 (80) |
| Hydraulic system, gal (L) | 31 (118) |

SWING

| | |
|--------------------|---------------|
| Swing force | 5,800 lbf-ft |
| Swing torque | 20,390 lbf-ft |

CYLINDER SPECS

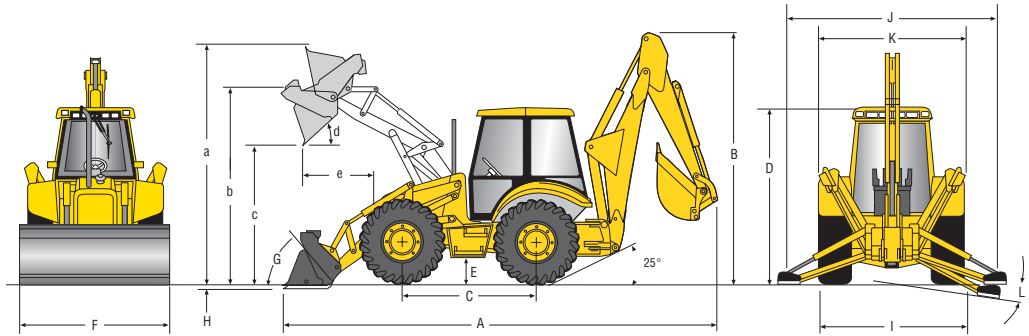
| | |
|-----------------------|---------------------------|
| Loader cylinder | 3.14" bore x 26.9" stroke |
| Backhoe | |
| Boom cylinder | 5.11" bore x 33.9" stroke |
| Arm cylinder | 4.52" bore x 30.3" stroke |
| Bucket cylinder | 3.54" bore x 30.0" stroke |
| Swing cylinder | 4.33" bore x 9.33" stroke |

SERVICE INTERVALS

| | |
|----------------------------|-------------|
| Engine oil | 500 hours |
| Hydraulic oil filter | 1,000 hours |
| Engine coolant | 2,000 hours |
| Rear axle oil | 1,000 hours |

B115 Specifications

DIMENSIONS



DIMENSIONS

| | | | |
|--|---------------|--|---------------|
| A. Transport length, ft/in (mm) | 23' 7" (7120) | G. Bucket Rollback | |
| B. Transport height, ft/in (mm) | 13' 1" (3965) | At ground level | 45° |
| C. Wheelbase, ft/in (mm) | | Raised | 59° |
| 4WD | 86.6" (2200) | H. Digging depth below grade, in (mm) | 7" (154) |
| D. Height to top of cab, ft/in (mm) | 9' 4" (2900) | I. Transport width, ft/in (mm) | 7' 11" (2400) |
| E. Ground Clearance, in (mm) | 17.8" (450) | J. Stabilizer spread, operating, ft/in (mm) | 10' 7" (3225) |
| F. Blade width, in (mm) | 94.5" (2400) | K. Stabilizer spread, transport, ft/in (mm) | 7' 5" (2260) |
| | | L. Stabilizer spread, leveling angle | 14° |

LOADER DIMENSIONS

| | Heavy-Duty General Purpose | Multi-Purpose (4x1) | Multi-Purpose (6x1) |
|--|----------------------------|---------------------|---------------------|
| a. Max operating height, ft/in (mm) | 14' 1" (4296) | 14' 6" (4409) | 14' 6" (4409) |
| b. Height to hinge pin, ft/in (mm) | 11' 3" (3440) | 11' 3" (3440) | 11' 3" (3440) |
| c. Dump height, ft/in (mm) | 8' 9" (2666) | 8' 9" (2666) | 8' 9" (2666) |
| d. Max dump angle | 45° | 45° | 45° |
| e. Reach @ 45 degree dump angle, ft/in (mm) | 2' 7" (795) | 2' 5" (732) | 2' 7" (795) |
| Max grading angle | 126° | 126° | 126° |

LOADER PERFORMANCE

| | Heavy-Duty General Purpose | Multi-Purpose (4x1) | Multi-Purpose (6x1) |
|--|----------------------------|---------------------|---------------------|
| Linkage geometry | 4-bar | 4-bar | 4-bar |
| Max bucket heaped capacity, cu yd (m³) | 1.5 (1.15) | 1.5 (1.15) | 1.5 (1.15) |
| Bucket breakout force, lbs (kg) | 12,165 (5518) | 12,165 (5518) | 12,165 (5518) |
| Lift capacity to full height, lbs (kg) | 7,464 (3386) | 6,892 (3126) | 6,488 (2943) |
| SAE heaped capacity, cu yd (m³) | 1.5 (1.13) | 1.5 (1.13) | 1.5 (1.13) |
| SAE struck capacity, cu yd (m³) | 1.18 (.90) | 1.18 (.90) | 1.18 (.90) |
| Bucket weight, lbs (kg) | 939 (426) | 1,675 (760) | 2,072 (940) |
| Cutting width, in (mm) | 94 (2400) | 94 (2400) | 94 (2400) |
| Cycle | | | |
| Raise to full height | 4.7 sec | 4.7 sec | 4.7 sec |
| Dump time | 1.5 sec | 1.5 sec | 1.5 sec |
| Lower | 2.4 sec | 2.4 sec | 2.4 sec |

Unit equipped with 1.5yd³ (1.13m³), loader bucket, 24" std. bucket, and 16.9-24 front and rear tires.

B115 Specifications

WEIGHT

| | |
|---------------------------|------------|
| Base Unit | 16,755 lbs |
| With options added | |
| 4x1 | +736 lbs |
| 6x1 | +1,133 lbs |
| HED (counterweight) | +200 lbs |

TRANSMISSION

| | |
|---|-------------|
| Manufacturer | Clark-Hurth |
| Transmission type | Powershift |
| Power shuttle standard | Yes |
| Gear | 4F/4R |
| Max travel speed, FWD, mph (kph) | 24 (39.2) |
| Max reverse speed, FWD, mph (kph) | 8.2 (13.2) |
| Front tire size, 4WD | 16.9-24 |
| Rear tires size, 4WD | 16.9-24 |

ENGINE

| | |
|--------------------------------------|--|
| Make and model | New Holland 445T/M2 |
| Type | Tier II emissionized, direct injection, 4-cycle diesel |
| Aspiration | Turbocharged |
| Governed RPM | 2200 RPM |
| Number of cylinders | 4 |
| Displacement, cu in (L) | 273 (4.5) |
| Horsepower, gross, hp (kW) | 110 (82) |
| Horsepower, net, hp (kW) | 108 (80) |
| Peak torque, lb-ft (N-m) @ RPM | 294 (398) @ 1400 |

MANEUVERABILITY

| | |
|----------------------------------|----------------|
| 4WD curb clearance (2ws) | 24' 10" (7585) |
| 4WD curb clearance (4ws) | 14' 3" (4340) |
| 4WD bucket clearance (2ws) | 28' 3" (8615) |
| 4WD bucket clearance (4ws) | 17' 1" (5210) |

Unit equipped with 1.5yd³ (1.13m³), loader bucket, 24" std. bucket, and 16.9-24 front and rear tires.

HYDRAULIC SYSTEM

| | |
|-------------------------------|--------------------------|
| System type | Open center load sensing |
| Main pump type | Dual gear |
| Pump capacity gpm (lpm) | 42 (159) |
| System relief pressure | 3,045 psi |

ELECTRICAL

| | |
|----------------------------------|---------------|
| Alternator output | 90 amps |
| Battery capacity (std/opt) | 1,200/900 CCA |

REFILL CAPACITIES

| | |
|--|------------|
| Fuel tank, gal (L) | 35.6 (135) |
| Cooling system, gal (L) | 6.4 (24) |
| Engine oil, includes filter, gal (L) | 3.6 (13.6) |
| Hydraulic tank, gal (L) | 21 (80) |
| Hydraulic system, gal (L) | 31 (118) |

SWING

| | |
|--------------------|--------------|
| Swing torque | 5,800 lbf-ft |
|--------------------|--------------|

CYLINDER SPECS

| | |
|-----------------------|---------------------------|
| Loader cylinder | 3.54" bore x 27.6" stroke |
| Backhoe | |
| Boom cylinder | 5.31" bore x 34" stroke |
| Arm cylinder | 4.52" bore x 30.3" stroke |
| Bucket cylinder | 3.54" bore x 30.0" stroke |
| Swing cylinder | 4.33" bore x 8.78" stroke |

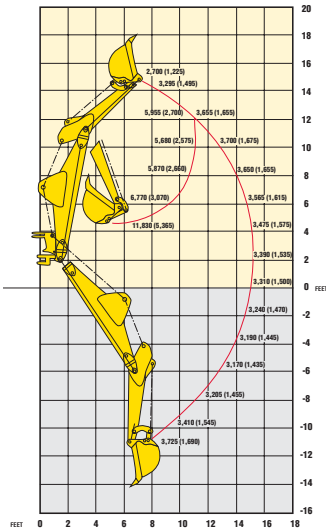
SERVICE INTERVALS

| | |
|----------------------------|-------------|
| Engine oil | 500 hours |
| Hydraulic oil filter | 1,000 hours |
| Engine coolant | 2,000 hours |
| Rear axle oil | 1,000 hours |

B95 B95TC Lift Capacities

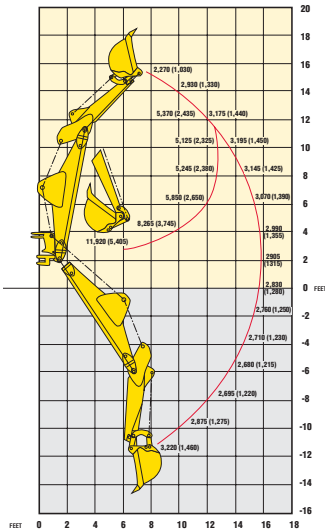
LIFT CAPACITIES

STANDARD BACKHOE (4WD) SHORT DIPPER
with 24", 412 lb bucket



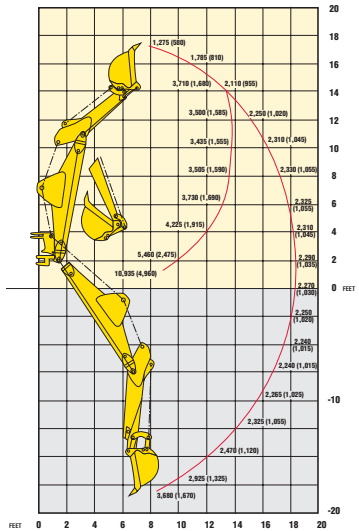
SAE 3,054 psi
P-210 Bar
Front Counterweight
Front Tires: 12-16.5 (contractor 4WD) TITAN
Rear Tires: 19.5L-24 (Ind. Tract. Lug R4) TITAN

HED BACKHOE RETRACTED (4WD)
with 24", 412 lb bucket



SAE 3,054 psi
P-210 Bar
Front Counterweight
Front Tires: 12-16.5 (contractor 4WD) TITAN
Rear Tires: 19.5L-24 (Ind. Tract. Lug R4) TITAN

HED BACKHOE EXTENDED (4WD)
with 24", 412 lb bucket



SAE 3,054 psi
P-210 Bar
Front Counterweight
Front Tires: 12-16.5 (contractor 4WD) TITAN
Rear Tires: 19.5L-24 (Ind. Tract. Lug R4) TITAN

BACKHOE DIMENSIONS

| | Standard | Retracted | Extended |
|---------------------------------------|----------------|---------------|----------------|
| Dig depth, 2' flat bottom, ft/in (mm) | 14' 0" (4262) | 14' 6" (4420) | 17' 11" (5464) |
| Dig depth, 8' flat bottom, ft/in (mm) | 12' 9" (3874) | 13' 4" (4061) | 17' 0" (5184) |
| Loading height, ft/in (mm) | 12' 2" (3705) | 12' 2" (3705) | 14' 8" (4453) |
| Loading reach, ft/in (mm) | 5' 7" (1683) | 5' 7" (1683) | 8' 9" (2687) |
| Max operating height, ft/in (mm) | 18' 1" (5504) | 18' 1" (5504) | 20' 6" (6250) |
| Reach from swing post, ft/in (mm) | 18' 2" (5539) | 18' 9" (5710) | 21' 10" (6651) |
| Reach from rear axle, ft/in (mm) | 21' 10" (6660) | 22' 5" (6831) | 25' 6" (7772) |
| Stabilizers | | | |
| Width, transport, ft/in (mm) | 7' 5" (2260) | | |
| Width, working (SAE), ft/in (mm) | 10' 7" (3230) | | |
| Swing arc | 180° | 180° | 180° |

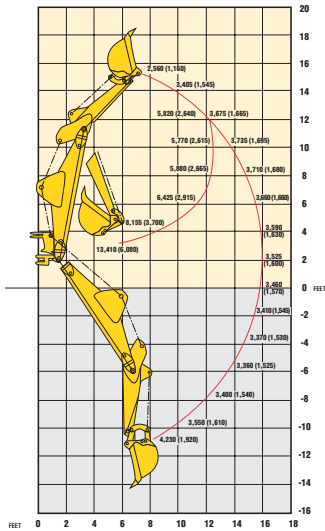
BACKHOE PERFORMANCE

| | Standard | Retracted | Extended |
|--------------------------------|---------------|---------------|----------------|
| Max dig depth, ft/in (mm) | 14' 0" (4262) | 14' 6" (4420) | 17' 11" (5464) |
| Bucket capacity, cu ft (m³) | 7.5 (.21) | 7.5 (.21) | 7.5 (.21) |
| Bucket digging force, lbs (kg) | 12,808 (5810) | 12,808 (5810) | 12,808 (5810) |
| Crowd digging force, lbs (kg) | 9,217 (4181) | 8,558 (3882) | 6,221 (2822) |
| Boom lift @ -8 ft, lbs (kg) | 3,205 (1455) | 2,695 (1220) | 2,265 (1025) |
| Dipper lift @ +10 ft, lbs (kg) | 5,680 (2576) | 5,125 (2325) | 3,435 (1555) |
| Bucket rotation (max) | 204° | 204° | 204° |

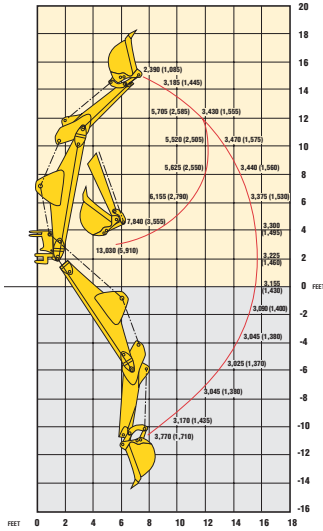
B95LR Lift Capacities

LIFT CAPACITIES

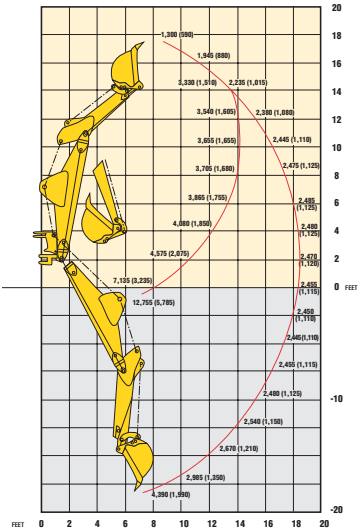
STANDARD BACKHOE (4WD) LONG DIPPER
with 24", 412 lb bucket



HED BACKHOE RETRACTED (4WD)
with 24", 412 lb bucket



HED BACKHOE EXTENDED (4WD)
with 24", 412 lb bucket



BACKHOE DIMENSIONS

| | Standard | Retracted | Extended |
|---------------------------------------|----------------|----------------|----------------|
| Dig depth, 2' flat bottom, ft/in (mm) | 15' 0" (4575) | 15' 0" (4575) | 18' 10" (5758) |
| Dig depth, 8' flat bottom, ft/in (mm) | 13' 11" (4237) | 13' 11" (4237) | 18' 0" (5494) |
| Loading height, ft/in (mm) | 12' 10" (3910) | 12' 10" (3910) | 15' 2" (4628) |
| Loading reach, ft/in (mm) | 6' 5" (1956) | 6' 5" (1956) | 9' 7" (2902) |
| Max operating height, ft/in (mm) | 18' 10" (5728) | 18' 10" (5728) | 21' 1" (6425) |
| Reach from swing post, ft/in (mm) | 19' 2" (5843) | 19' 2" (5843) | 22' 9" (6928) |
| Reach from rear axle, ft/in (mm) | 22' 10" (6963) | 22' 10" (6963) | 26' 5" (8047) |
| Stabilizers | | | |
| Width, transport, ft/in (mm) | 7' 5" (2260) | | |
| Width, working (SAE), ft/in (mm) | 10' 7" (3230) | | |
| Swing arc | 180° | 180° | 180° |

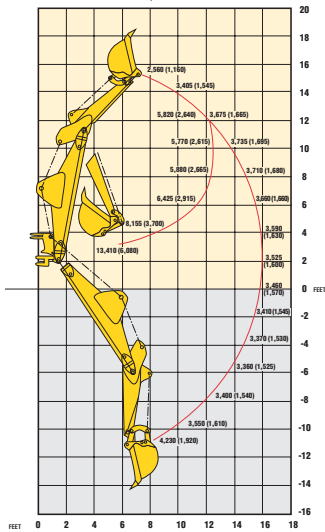
BACKHOE PERFORMANCE

| | Standard | Retracted | Extended |
|--------------------------------|---------------|---------------|----------------|
| Max dig depth, ft/in (mm) | 15' 1" (4592) | 15' 1" (4592) | 18' 11" (5776) |
| Bucket capacity, cu ft (m³) | 7.5 (.21) | 7.5 (.21) | 7.5 (.21) |
| Bucket digging force, lbs (kg) | 12,808 (5810) | 12,808 (5810) | 12,808 (5810) |
| Crowd digging force, lbs (kg) | 8,088 (3670) | 8,121 (3684) | 5,771 (2618) |
| Boom lift @ -8 ft, lbs (kg) | 3,400 (1542) | 3,045 (1381) | 2,480 (1125) |
| Dipper lift @ +10 ft, lbs (kg) | 5,770 (2617) | 5,520 (2504) | 3,855 (1749) |
| Bucket rotation (max) | 204° | 204° | 204° |

B110 Lift Capacities

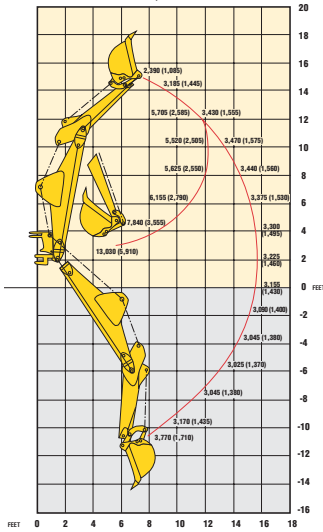
LIFT CAPACITIES

STANDARD BACKHOE (4WD) LONG DIPPER
with 24", 412 lb bucket



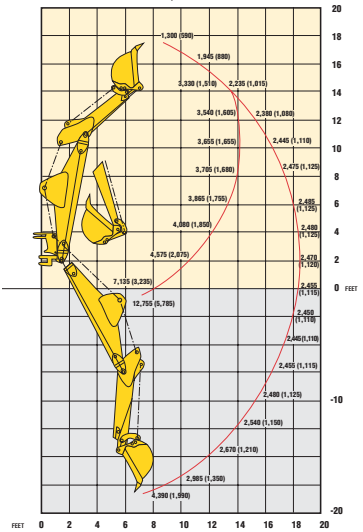
SAE 3,054 psi
P-210 Bar
Front Counterweight
Front Tires: 12-16.5 (contractor 4WD) TITAN
Rear Tires: 19.5L-24 (Ind. Tract. Lug R4) TITAN

HED BACKHOE RETRACTED (4WD)
with 24", 412 lb bucket



SAE 3,054 psi
P-210 Bar
Front Counterweight
Front Tires: 12-16.5 (contractor 4WD) TITAN
Rear Tires: 19.5L-24 (Ind. Tract. Lug R4) TITAN

HED BACKHOE EXTENDED (4WD)
with 24", 412 lb bucket



SAE 3,054 psi
P-210 Bar
Front Counterweight
Front Tires: 12-16.5 (contractor 4WD) TITAN
Rear Tires: 19.5L-24 (Ind. Tract. Lug R4) TITAN

BACKHOE DIMENSIONS

| | Standard | Retracted | Extended |
|---------------------------------------|----------------|----------------|----------------|
| Dig depth, 2' flat bottom, ft/in (mm) | 15' 0" (4575) | 15' 0" (4575) | 18' 10" (5758) |
| Dig depth, 8' flat bottom, ft/in (mm) | 13' 11" (4237) | 13' 11" (4237) | 18' 0" (5494) |
| Loading height, ft/in (mm) | 12' 10" (3910) | 12' 10" (3910) | 15' 2" (4628) |
| Loading reach, ft/in (mm) | 6' 5" (1956) | 6' 5" (1956) | 9' 7" (2902) |
| Max operating height, ft/in (mm) | 18' 10" (5728) | 18' 10" (5728) | 21' 1" (6425) |
| Reach from swing post, ft/in (mm) | 19' 2" (5843) | 19' 2" (5843) | 22' 9" (6928) |
| Reach from rear axle, ft/in (mm) | 22' 10" (6963) | 22' 10" (6963) | 26' 5" (8047) |
| Stabilizers | | | |
| Width, transport, ft/in (mm) | 7' 5" (2260) | | |
| Width, working (SAE), ft/in (mm) | 10' 7" (3230) | | |
| Swing arc | 180° | 180° | 180° |

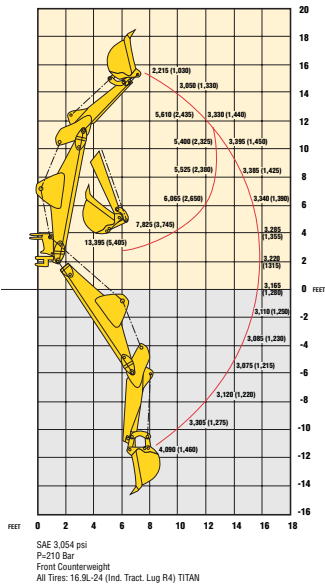
BACKHOE PERFORMANCE

| | Standard | Retracted | Extended |
|--------------------------------|---------------|---------------|----------------|
| Max dig depth, ft/in (mm) | 15' 1" (4592) | 15' 1" (4592) | 18' 11" (5776) |
| Bucket capacity, cu ft (m³) | 7.5 (.21) | 7.5 (.21) | 7.5 (.21) |
| Bucket digging force, lbs (kg) | 12,808 (5810) | 12,808 (5810) | 12,808 (5810) |
| Crowd digging force, lbs (kg) | 8,088 (3670) | 8,121 (3684) | 5,771 (2618) |
| Boom lift @ -8 ft, lbs (kg) | 3,400 (1542) | 3,045 (1381) | 2,480 (1125) |
| Dipper lift @ +10 ft, lbs (kg) | 5,770 (2617) | 5,520 (2504) | 3,855 (1749) |
| Bucket rotation (max) | 204° | 204° | 204° |

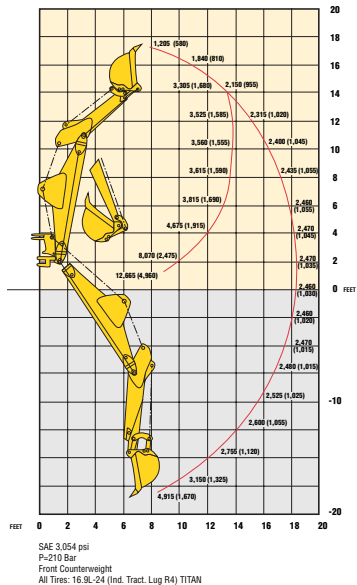
B115 Lift Capacities

LIFT CAPACITIES

HED BACKHOE RETRACTED (4WD)
with 24", 412 lb bucket



HED BACKHOE EXTENDED (4WD)
with 24", 412 lb bucket



BACKHOE DIMENSIONS

| | Retracted | Extended |
|---------------------------------------|----------------|---------------|
| Dig depth, 2' flat bottom, ft/in (mm) | 15' 1" (4605) | 19' 0" (5790) |
| Dig depth, 8' flat bottom, ft/in (mm) | 14' 0" (4267) | 18' 1" (5510) |
| Loading height, ft/in (mm) | 12' 6" (3805) | 14' 8" (4470) |
| Loading reach, ft/in (mm) | 6' 8" (2035) | 9' 11" (3020) |
| Max operating height, ft/in (mm) | 18' 7" (5657) | 21' 4" (6320) |
| Reach from swing post, ft/in (mm) | 19' 2" (5841) | 22' 9" (6930) |
| Reach from rear axle, ft/in (mm) | 22' 10" (6963) | 26' 5" (8050) |
| Stabilizers | | |
| Width, transport, ft/in (mm) | 7' 5" (2230) | 7' 5" (2230) |
| Width, working (SAE), ft/in (mm) | 10' 7" (3230) | 10' 7" (3230) |
| Swing arc | 180° | 180° |

BACKHOE PERFORMANCE

| | Retracted | Extended |
|--|---------------|---------------|
| Max dig depth, ft/in (mm) | 15' 3" (4636) | 19' 1" (5810) |
| Bucket capacity, cu ft (m³) (std. 24") | 7.5 (.21) | 7.5 (.21) |
| Bucket digging force, lbs (kg) | 12,808 (5810) | 12,808 (5810) |
| Crowd digging force, lbs (kg) | 8,121 (3684) | 5,771 (2618) |
| Boom lift @ -8 ft, lbs (kg) | 3,120 (1415) | 2,525 (1145) |
| Dipper lift @ +10 ft, lbs (kg) | 5,400 (2449) | 3,560 (1615) |
| Bucket rotation (max) | 204° | 204° |

B95 B95TC B95LR Base & Optional Equipment

BASE EQUIPMENT

ENGINE

Dry dual-element air cleaner
Two-stage fuel filtering

TRANSMISSION

Power shuttle fully synchronized gearbox,
4 forward/4 reverse speeds, and power-
reversing torque converter
Two position electric disconnect on loader
control and gearshift

REAR AXLE/BRAKES

Planetary final drives
Mechanically-actuated differential lock
Multi-plate, hydraulic, self-adjusting,
self-equalizing wet disc brakes
Independent parking/emergency brake

FRONT AXLE

73" tread width
8-bolt wheel hubs
Hydrostatic power steering with priority
valve
Integrated steering cylinder
2WD axle: cast iron
FWD axle: cast iron
FWD electrical engagement with indicator
light

ELECTRICAL

12-volt system
90 amp high-capacity alternator
Dual batteries with 1,200 CCA

LIGHTING

4 front/4 rear halogen worklights (CAB)
2 front/ 2 rear halogen worklights (CANOPY)
2 rear reflectors
2 rear tail and turn indicators

BACKHOE

Mechanical transport lock
Dirt stabilizer pads
EasyTouch 2-lever controls (SAE pattern)
Stabilizer lock valves

OPERATOR'S STATION (ROPS)

Dual side entry flat deck
Interior rearview mirror
Built-in beverage holder
Key start switch with electric shut-off
2-position horn control
Electric analog instrumentation
Tachometer/hourmeter
Fuel gauge
Fixed steering wheel
Auxiliary 12-volt output/cigarette lighter
Pre-wired for emergency beacon
Pre-wired for road headlights
Vinyl suspension seat
2-inch retractable seatbelt

OPERATOR'S STATION (CAB)

Dual side entry flat deck
Interior rearview mirror
Built-in beverage holder
Coat hook
Pre-wired for radio
Key start switch with electric shut-off
Headliner
2-position horn control
Molded floor mat
Electric instrumentation
Tachometer/hourmeter
Fuel gauge
Interior dome light
Fixed steering wheel
Auxiliary 12-volt output/cigarette lighter
Pre-wired for emergency beacon
Pre-wired for road headlights
Adjustable side window openings
One-piece rear window
3-speed heater/blower fan
Adjustable front sun-screen shade
Cloth suspension seat
2-inch retractable seatbelt
Heater

LOADER

Hydraulic quick coupler (B95TC)
Straight-arm design (B95 & B95LR)
4-Bar bucket linkage (B95TC)
Bucket level indicator
Return-to-dig feature
Dual lift and bucket cylinders
Hydromechanical self-leveling (B95 & B95LR)
Single lever control
Loader arm support
1.1 yd³ heavy duty bucket (B95 & B95LR)
1.3 yd³ heavy duty bucket (B95TC)
Mechanical self leveling (B95TC)

HYDRAULICS

O-ring Face seal connectors
"PD" type diagnostic port connectors
Open center coaxial drive hydraulic pump
10 micron spin-on filter element

TOTAL VEHICLE

Front counterweight
Rear fenders
Lockable integrated toolbox
One-piece, unitized mainframe
Front and rear tie-down points
Audible backup alarm

VANDALISM/SECURITY

Lockable control panel cover on ROPS
Key-lockable engine side panels
Key-lockable fuel cap
Tamper-proof hydraulic reservoir cap

TIRES

2 Wheel Drive Tire Package:
11L x 16, 10PR (F3)
19.5 X 24, 10PR (R4)
4 Wheel Drive Tire Package:
12 x 16.5, 8PR FWD
19.5 X 24, 10PR (R4)

OPTIONAL EQUIPMENT

ENGINE

Grid heater starting aid
*110-volt engine block heater
*Centrifugal dust bowl pre-cleaner

TRANSMISSION

Single lever F-N-R control with safety
detent

ELECTRICAL

Single battery with 900 CCA
Dual batteries

LIGHTING

4 front/4 rear halogen worklights (CANOPY)

BACKHOE

2-lever pilot controls with pattern changer
*Mechanical backhoe bucket quick coupler
4-lever backhoe controls
2-lever ISO excavator pattern backhoe
controls
HED extendible dipperstick
Multiple bucket options from factory
Heavy-duty and extra heavy-duty backhoe
buckets
Flip over stabilizer pads

OPERATOR'S STATION (ROPS)

Electric ON/OFF control of hydraulic hand
tool function
Foot-activated switch control of backhoe
hammer

OPERATOR'S STATION (CAB)

CFC-free R134a air conditioning system
Electric ON/OFF control of hydraulic hand
tool function
Foot-activated switch control of backhoe
hammer
3-inch retractable seatbelt
Tilt steering wheel
Air suspension seat

LOADER

1.3 yd³ heavy duty bucket (B95 & B95LR)
Multi-purpose bucket (4X1)
Multi-purpose bucket w/forks (6X1)
Electro-hydraulic quick coupler (B95 & B95LR)
Aux hydraulics

HYDRAULICS

Backhoe hammer circuit
Mid-mount hand tool circuit
Extra function backhoe valve with
control pedal (less HED)
*Glide Ride control system

TOTAL VEHICLE

Fire extinguisher
Special order paint colors
*External rearview mirrors
Front fenders
*Operator cooling fan
*4wd driveshaft guard kit

VANDALISM/SECURITY

*Steering cylinder lock
Engine electrical disconnect switch

LOADER ATTACHMENTS

Sweeper brooms
4x1 bucket
Auger
Claw
Forks
Scrap Grapple

BACKHOE ATTACHMENTS

Hydraulic breaker
Hydraulic auger
Hydraulic thumb
Additional buckets

TIRES

Please see your dealer to discuss the other
tire options available.

*Dealer installed option

B110 B115 Base & Optional Equipment

BASE EQUIPMENT

ENGINE

Dry dual-element air cleaner
Two-stage fuel filtering
Centrifugal dust bowl cleaner (B115)

TRANSMISSION

Power shuttle fully synchronized gearbox, 4 forward/4 reverse speeds, and power-reversing torque converter (B110)
Powershift, 4 forward/2 reverse speeds, with power-reversing torque converter (B115)
Two position electric disconnect on loader control and gearshift

REAR AXLE/BRAKES

Planetary final drives
Mechanically-actuated differential lock (B110)
Limited slip rear axle (B115)
Electric differential lock on powershift
Multi-plate, hydraulic, self-adjusting, self-equalizing wet disc brakes
Independent parking/emergency brake

FRONT AXLE

73" tread width
83" tread width (B115)
8-bolt wheel hubs (B110)
6-bolt wheel hubs (B115)
Hydrostatic power steering with priority valve
Integrated steering cylinder
2WD axle: cast iron (B110)
FWD axle: cast iron
FWD electrical engagement with indicator light

ELECTRICAL

12-volt system
90-amp high-capacity alternator
Dual batteries with 1,200 CCA

LIGHTING

4 front/4 rear halogen worklights
2 rear reflectors
2 rear tail and turn indicators

BACKHOE

Mechanical transport lock (B110)
Mechanical hydraulic transport lock
EasyTouch 2-lever controls (SAE pattern)
Stabilizer lock valves
HED extendible dipperstick (B115)

OPERATOR'S STATION (ROPS) (B110 ONLY)

Dual side entry flat deck
Interior rearview mirror
Built-in beverage holder
Key start switch with electric shut-off
2-position horn control
Electric analog instrumentation
Tachometer/hourmeter
Fuel gauge
Tilt steering wheel
Auxiliary 12-volt output/cigarette lighter
Pre-wired for emergency beacon
Pre-wired for road headlights
Vinyl suspension seat
SE3-inch retractable seatbelt

OPERATOR'S STATION (CAB)

Dual side entry flat deck
Interior rearview mirror
Built-in beverage holder
Coat hook
Pre-wired for radio
Key start switch with electric shut-off
Headliner
2-position horn control
Molded floor mat
Electric instrumentation
Tachometer/hourmeter
Fuel gauge
Interior dome light
Tilt steering wheel
Auxiliary 12-volt output/cigarette lighter
Pre-wired for emergency beacon
Pre-wired for road headlights
Adjustable side window openings
One-piece rear window
3-speed heater/blower fan
Adjustable front sun-screen shade
Cloth suspension seat
2-inch retractable seatbelt

LOADER

Straight-arm design (B110)
4-bar bucket linkage (B115)
4-Bar bucket linkage
Bucket level indicator
Return-to-dig feature
Dual lift and bucket cylinders
Hydromechanical self-leveling (B110)
Mechanical self-leveling (B115)
Single lever control
Loader arm support
1.3 yd³ heavy duty bucket (B110)
1.5 yd³ heavy duty bucket (B115)

HYDRAULICS

O-Ring Face seal connectors
"PD" type diagnostic port connectors
Open center coaxial drive hydraulic pump
10 micron spin-on filter element

TOTAL VEHICLE

Front counterweight
Rear fenders
Lockable integrated toolbox
One-piece, unitized mainframe
Front and rear tie-down points
Audible backup alarm

VANDALISM/SECURITY

Lockable control panel cover on ROPS
Engine electrical disconnect switch
Key-lockable engine side panels
Key-lockable fuel cap
Tamper-proof hydraulic reservoir cap

TIRES (B110)

4 Wheel drive Tire Package:
14 x 17.5 8PR FWD
211 x 24, 10PR (R4)
Power Shift Standard Tires:
14 x 17.5 8PR FWD
211 x 24, 10PR (R4)

TIRES (B115)

16.9 x 24 (4 at equal sizes)

OPTIONAL EQUIPMENT

ENGINE

Grid forward starting aid
*110-volt engine block heater
*Centrifugal dust bowl pre-cleaner (B110)

TRANSMISSION

Powershift, 4 forward/2 reverse speeds, and power-reversing torque converter (B110)
Single lever F-N-R control with safety detent

ELECTRICAL

Single battery with 900 CCA

BACKHOE

2-lever pilot controls with pattern changer
*Mechanical backhoe bucket quick coupler
4-lever backhoe controls
2-lever ISO excavator pattern backhoe controls
HED extendible dipperstick (B110)
Multiple bucket options from factory
Heavy-duty and extra heavy-duty backhoe buckets

OPERATOR'S STATION (ROPS) (B110 ONLY)

Electric ON/OFF control of hydraulic hand tool function
Foot-activated switch control of backhoe hammer

OPERATOR'S STATION (CAB)

CFC-free R134a air conditioning system
Electric ON/OFF control of hydraulic hand tool function
Foot-activated switch control of backhoe hammer
Air suspension seat

LOADER

1.3 cu yd HD bucket w/forks (B110)
1.5 cu yd bucket (B115)
Multi-purpose bucket (4X1)
Multi-purpose bucket w/forks (6X1)
Electro-hydraulic quick coupler
Aux hydraulics

*Dealer installed option

HYDRAULICS

Backhoe hammer circuit
Mid-mount hand tool circuit
Extra function backhoe valve with control pedal (less HED)
*Glide Ride control system

TOTAL VEHICLE

Fire extinguisher
Special order paint colors
*External rearview mirrors
Front fenders
*Operator cooling fan
*4wd driveshaft guard kit

VANDALISM/SECURITY

*Steering cylinder lock

LOADER ATTACHMENTS

Sweeper brooms
4x1 bucket
Auger
Claw
Forks
Scrap Grapple

BACKHOE ATTACHMENTS

Hydraulic breaker
Hydraulic auger
Hydraulic thumb
Additional buckets

TIRES

Please see your dealer to discuss the other tire options available.

LOADER BACKHOES

B95 / B95TC / B95LR

Gross horsepower
95 hp (67 kW) @ 2,200 rpm

Base unit weight
B95 14,440 lbs (6549 kg)
B95TC 16,567 lbs (7515 kg)
B95LR 14,460 lbs (6559 kg)

Backhoe bucket capacity
7.5 cu. ft. (.21 m³)

Loader SAE heaped capacity
1.3 cu. yd. (1.0 m³)

B110

Gross horsepower
110 hp (82 kW) @ 2,200 rpm

Base unit weight
14,814 lbs (6719 kg)

Backhoe bucket capacity
7.5 cu. ft. (.21 m³)

Loader SAE heaped capacity
1.3 cu. yd. (1.0 m³)

B115

Gross horsepower
110 hp (82 kW) @ 2,200 rpm

Base unit weight
16,755 lbs (7600 kg)

Backhoe bucket capacity
7.5 cu. ft. (.21 m³)

Loader SAE heaped capacity
1.5 cu. yd. (1.13 m³)



New Holland Construction Equipment Dealers are committed to your success

Your New Holland construction equipment dealer can match you with the best equipment for your operation. Your productivity is their goal and your profitability is their priority.

But providing dependable, efficient construction equipment is only the beginning. Your dealer can also make it easier to put New Holland construction equipment to work on your job site by tailoring low-rate financing, lease programs and insurance plans to meet your needs.

And after the sale your dealer provides peace of mind with expert parts and service support. Factory-trained technicians will service your equipment promptly and maintain your investment.

Visit your New Holland construction equipment dealer and see for yourself why New Holland is a



New Holland construction equipment is backed with a 1-Year Unlimited-Hour Standard Warranty*

Visit our website at www.newhollandconstruction.com Or, call toll-free: 1-866-726-3396



*Mid-size and full-size excavators feature 1-year/2,000 hour standard warranties.

Design, materials and/or specifications are subject to change without notice and without liability therefor. Specifications are applicable to units sold in Canada, the United States, its territories and possessions, and may vary outside these areas.

© 2006 CNH America LLC
New Holland is a trademark of CNH America LLC.



Safety begins with a thorough understanding of the equipment. Always make sure you and your operators read the Operator's Manual before using the equipment. Pay close attention to all safety and operating decals and never operate machinery without all shields, protective devices and structures in place.

Stock #NHC7060601 • 070620 • IS • PRINTED IN U.S.A.