



KUBOTA COMPACT TRACK LOADER

**SVL**

**SVL75-2 / SVL90-2**

The outstanding power and exceptional comfort of Kubota's new Compact Track Loaders take high performance and productivity to a new level.



# Need more productivity? Put the all-new Kubota Compact Track Loader to work for you.

Kubota, a trusted and world-leading manufacturer of construction equipment, is proud to introduce the all-new SVL75-2/SVL90-2 Compact Track Loaders. These new compact track loaders deliver best-in-class bucket breakout force and lifting capacity, outstanding stability, a wide and comfortable operator area, and much more. When it comes to high performance, reliability and comfort, the road leads to Kubota.

**OUTSTANDING PERFORMANCE**

**EXCEPTIONAL COMFORT**

**EASY MAINTENANCE AND  
IMPRESSIVE DURABILITY**

## **SVL75-2**

Engine gross horsepower : 74.3 HP (55.4 kW)

Rated operating capacity (35% of tipping load) : 2300 lbs (1043 kg)

Lifting capacity : 4881 lbs (2214 kg)

Bucket breakout force : 6204 lbs (2814 kg)

Operating weight (Including operator weight 175 lbs) : 9039 lbs (4100 kg)





# COMPACT TRACK LOADER SVL75-2/SVL90-2



## SVL90-2

Engine gross horsepower : 92.0 HP (68.6 kW)

Rated operating capacity (35% of tipping load) : 3010 lbs (1365 kg)

Lifting capacity : 5869 lbs (2662 kg)

Bucket breakout force : 7961 lbs (3611 kg)

Operating weight (Including operator weight 175 lbs) : 11023 lbs (5000 kg)



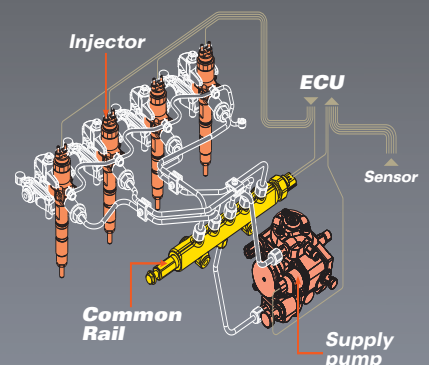


# OUTSTANDING PERFORMANCE

## Kubota Engine

### Common Rail System and Diesel Particulate Filter (DPF) Muffler

The Common Rail System (CRS) electronically controls the fuel injection timing and amount in stages rather than all at once for optimal combustion. The results are great efficiency, better fuel economy and less engine noise. Its combination with the Exhaust Gas Recirculation (EGR) and Diesel Particulate Filter (DPF) Muffler reduces emissions to make the SVL75-2 Tier IV compliant/ SVL90-2 Interim Tier IV compliant.







	<b>SVL75-2</b>	<b>SVL90-2</b>
<b>Bucket Breakout Force:</b>	<b>6204 lbs</b>	<b>7961 lbs</b>
<b>Arm Breakout Force:</b>	<b>4766 lbs</b>	<b>6742 lbs</b>
<b>Lifting Capacity:</b>	<b>4881 lbs</b>	<b>5869 lbs</b>
<b>Tipping Load:</b>	<b>6570 lbs</b>	<b>8600 lbs</b>

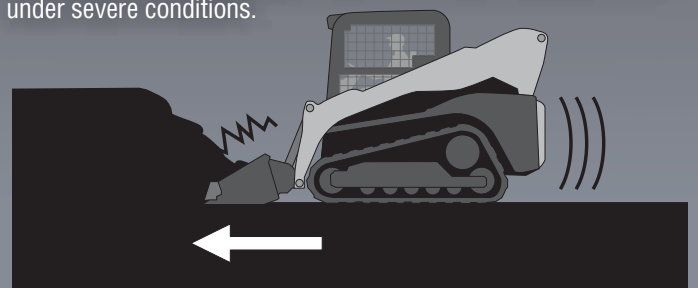
#### Automatic regeneration system

Kubota's original automatic regeneration system automatically burns accumulated particulate matter (soot) in the DPF muffler to keep the muffler clean for longer operation. For safety reasons, automatic regeneration can be turned off with the inhibit switch when the excavator is operating in areas that are close to material with potential for ignition.



#### Electronic Travel Torque Management

Electronic Travel Torque Management System lets you work faster with more power. The ECU constantly monitors the load of the machine to optimally control hydraulic pump output according to the load, preventing engine stalls for smoother operation even under severe conditions.







# Kubota Unique Vertical Lift Design

## High-flow Hydraulics (Option) (SVL90-2)

This option can increase the hydraulic capacity for implements requiring larger hydraulics. Both 1/2" and 3/4" couplers are included.



## Long Reach for Maximum Lifting and Dumping High Bucket Hinge Pin Height

Kubota's unique vertical lift is designed to deliver an exceptionally long reach of 41.7 inches (SVL75-2) and 40.7 inches (SVL90-2). In addition, the tip of the arm is optimally shaped for a tall hinge pin height of 119.1 inches (SVL75-2) / 128.6 inches (SVL90-2) for easy dumping into trucks.



## Standard Self-leveling Function

This feature helps keep the bucket or fork in a horizontal position without the need to manually adjust the angle during lifting.



# Travel Performance

## 1. Standard Two-speed Travel

Shift from low gear at 4.7 mph (SVL75-2) / 5.0 mph (SVL90-2) to high gear at 7.1 mph (SVL75-2) / 7.3 mph (SVL90-2) to get the job done faster.

## 2. Pilot Valve with Shuttle Piston

This ensures consistent oil flow which improves stability when going straight.

## 3. Higher Ground Clearance

A high ground clearance of 11.7 inches (SVL75-2) / 11.8 inches (SVL90-2) lets you travel over large obstacles with ease.

## 4. Strong Traction Force

Kubota's original track lug design gives you more grip and a stronger traction force of 9678 lbs (SVL75-2) / 12178 lbs (SVL90-2).





# EXCEPTIONAL COMFORT

## Comfortable Cab

### Wider Cab Entrance

A wider entrance makes it easier to get in and out.

### Wide And Clean Cab

The spacious interior minimizes fatigue even during long work hours.

### High-back Full Suspension Seat

The standard suspension seat offers outstanding comfort. (Air Suspension seat is optional)

### Arm Rest

The spacious cab also includes ergonomically placed arm rests on the right and left sides of the seat to minimize operator fatigue.

### Wide Leg Room

The cab provides ample leg room to reduce operator fatigue.

### Easy-clean Floor Mat and Drain Outlet

The soft rubber floor mat is easy to remove and clean. And with the built-in drain outlet, the mat can be washed in the cab.





# Excellent 360° Visibility

The edge of the bucket can be seen from the seat. Improved visibility translates to better safety on the job.



## Hand and Foot Throttle

The hand and foot throttle allows you to match the engine speed to the task. The hand throttle is ideal for jobs requiring constant engine speed such as cold planing, trenching or snow blowing. The foot throttle lets the operator vary engine speed for other applications.





# EXCEPTIONAL COMFORT

## Pressurized Cab

The cab is pressurized to keep dust, flying debris, and insects away to enhance comfort on the job. Furthermore, noise is kept down to let you work for long hours with minimal fatigue.



## Excellent Air Conditioning Performance

### Optimized Air Conditioning

The climate control system offers outstanding cooling and heating performance with optimized airflow for a high level of comfort all year round.

### Enhanced Defrosting and Demisting Functions

Ample airflow prevents the windows from fogging up or freezing during the cold months of the year.





# CAB

## Easy-open Sliding Windows

The sliding front and double-sliding side windows can be opened regardless of the position of the front attachment, allowing you to get in or out safely even during emergencies.





# EASY MAINTENANCE IMPRESSIVE DUTY

## Easy Maintenance

### Tilt-up Cab

The cab can be tilted 72° without having to lift the arm, allowing easy access to the hydraulic pumps, valves, lines and hydraulic tank.

### Routine Checks

Simply open the rear bonnet to access all components for daily routine inspections.

### Slide-and-tilt Radiator and Oil Cooler

The radiator can be tilted for easy cleaning.



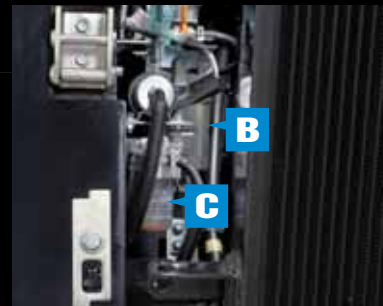
### Large Space for Tool Box

The SVL75-2/90-2 offer a convenient and large tool box for storing a grease gun and other necessities.





# ANCE & RABILITY



- A. Dual Element Air Cleaner**
- B. Fuel Filter**
- C. Water Separator**
- D. Maintenance-Free Battery**
- E. Coolant**
- F. Slide-and-tilt Radiator**

## Diesel Particulate Filter (DPF)

The Diesel Particulate Filter meets the latest Tier4(SVL75-2) and Interim Tier4(SVL90-2) diesel emissions regulation by collecting particulate matter (PM) from exhaust gas for cleaner exhaust emissions.

## Impressive Durability

### 1. Welded, Integrated Mainframe and Undercarriage

The undercarriage forms an integral part of the main frame for maximum durability.

### 2. Kubota Original Rubber Tracks

Kubota's original rubber tracks offer outstanding durability and long-life performance. Furthermore, Kubota's original lug pattern prevents soil from accumulating and improves traction force.

### 3. Triple Flange Lower Track Rollers

A highly reliable triple flange design not only minimizes the risk of detracking, but improves stability as well.



1

2

3



# VERSATILITY

With a wide variety of attachments available\*, Kubota Compact Track Loaders are the most versatile machine on your jobsite.

*\*Not all attachments are OEM-KUBOTA.*

**4-in-1 Bucket**



**Auger**



**Grapple Bucket**



**Pallet Fork**



**Sweeper**



**Brush Cutter**

**Tiller**

**Buckets**

**Tilt Attach**

**Cold Planer**

**Snow Blade**

**Broom**

**Snow Blower**

**Dozer Blade**

**Breaker**

**Quick Coupler**

An optional Hydraulic quick coupler is available. You can attach or remove attachments using a switch without leaving the seat.



## EQUIPMENT

### STANDARD EQUIPMENT

Open CAB (ROPS / FOPS Level 1)  
Top / Rear window  
Suspension seat  
2" Retractable seat belt  
Operator presence control  
Pull down arm rest  
Hand / Foot throttle  
12V electric outlet  
Horn  
Lockable fuel cap  
Backup alarm

Working lights (Front 2 / Rear 2)  
Glow plug  
Mechanical quick coupler  
Loader arm float function  
Bucket self-leveling (up only)  
Wet disc parking brakes  
Two-speed travel  
Rubber crawler  
SVL75-2-15.0" (380mm)  
SVL90-2-17.7" (450mm)

### OPTIONAL EQUIPMENT

High-flow aux. hydraulics (SVL90-2)  
(1/2" and 3/4" couplers included)\*  
14-pin coupler for attachments  
Air ride suspension seat  
3" Retractable seat belt  
3-point seat belt  
Rear bonnet lock Kit  
Rear view mirror  
Hydraulic quick coupler\*  
Strobe light  
Beacon light

Spark arrester muffler  
Engine block heater  
Radiator net  
...and much more.

\*Factory Option

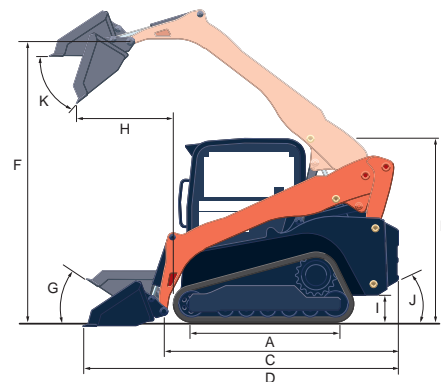
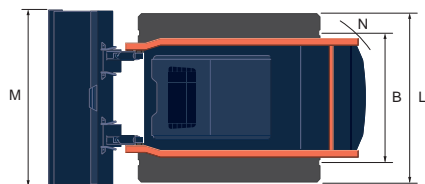


# SPECIFICATIONS

Model				SVL75-2		SVL90-2	
Type of operator station				Open CAB / Closed CAB		Open CAB / Closed CAB	
Engine	Model			V3307-CR-TE4		V3800-CR-TE4	
	Gross HP		HP (kW)/rpm	74.3 (55.4)/2400		92.0 (68.6)/ 2400	
	Displacement		cu.in. (cc)	203.3 (3331)		230.0 (3769)	
	Cylinders			4		4	
	Bore × Stroke		in.(mm)	3.7 (94) × 4.72 (120)		3.94 (100) × 4.72 (120)	
	Aspiration			Turbocharged		Turbocharged	
Loader Performance	Rated operating capacity-35% tipping load		lbs. (kg)	2300 (1043)		3010 (1365)	
	Rated operating capacity-50% tipping load		lbs. (kg)	3285 (1490)		4300 (1950)	
	Tipping load		lbs. (kg)	6570 (2980)		8600 (3900)	
	Breakout force	Bucket	lbf. (kgf)	6204 (2814)		7961 (3611)	
		Lift arm	lbf. (kgf)	4766 (2162)		6742 (3058)	
	Lifting capacity		lbs. (kg)	4881 (2214)		5869 (2662)	
Undercarriage	Lift arm path			Vertical		Vertical	
	Track Width		in. (mm)	15.0 (380)		17.7 (450)	
	Ground pressure		psi	4.7 / 4.9		4.2 / 4.3	
	Track rollers (per side)			4		5	
	Track ground contact length		in. (mm)	56.5 (1436)		65.6 (1667)	
	Travel speed	Low	mph (km/h)	4.7 (7.5)		5.0 (8.0)	
		High	mph (km/h)	7.1 (11.5)		7.3 (11.7)	
Hydraulic system	Traction force		lbf. (kgf)	9678 (4390)		12178 (5524)	
	Min. ground clearance		in. (mm)	11.7 (296)		11.8 (299)	
	Loader hydraulic flow		gpm (ℓ/min.)	18.8 (71.2)		25.1 (94.9)	
	Loader hydraulic pressure		psi (kgf/cm²)	3555 (250)		3555 (250)	
	Aux. hydraulic flow	Standard	gpm (ℓ/min.)	18.8 (71.2)		25.1 (94.9)	
		High	gpm (ℓ/min.)	N/A		36.5 (138.3)	
Service refill capacities	Hydraulic system		gal. (ℓ)	15.9 (60)		18 (68)	
	Hydraulic tank		gal. (ℓ)	9.2 (35)		10.1 (38.1)	
	Fuel tank		gal. (ℓ)	24.6 (93)		29.9 (113)	
Operating weight (Includes operator weight 175lbs.)			lbs. (kg)	9039 (4100) / 9315 (4225)		11023 (5000) / 11299 (5125)	

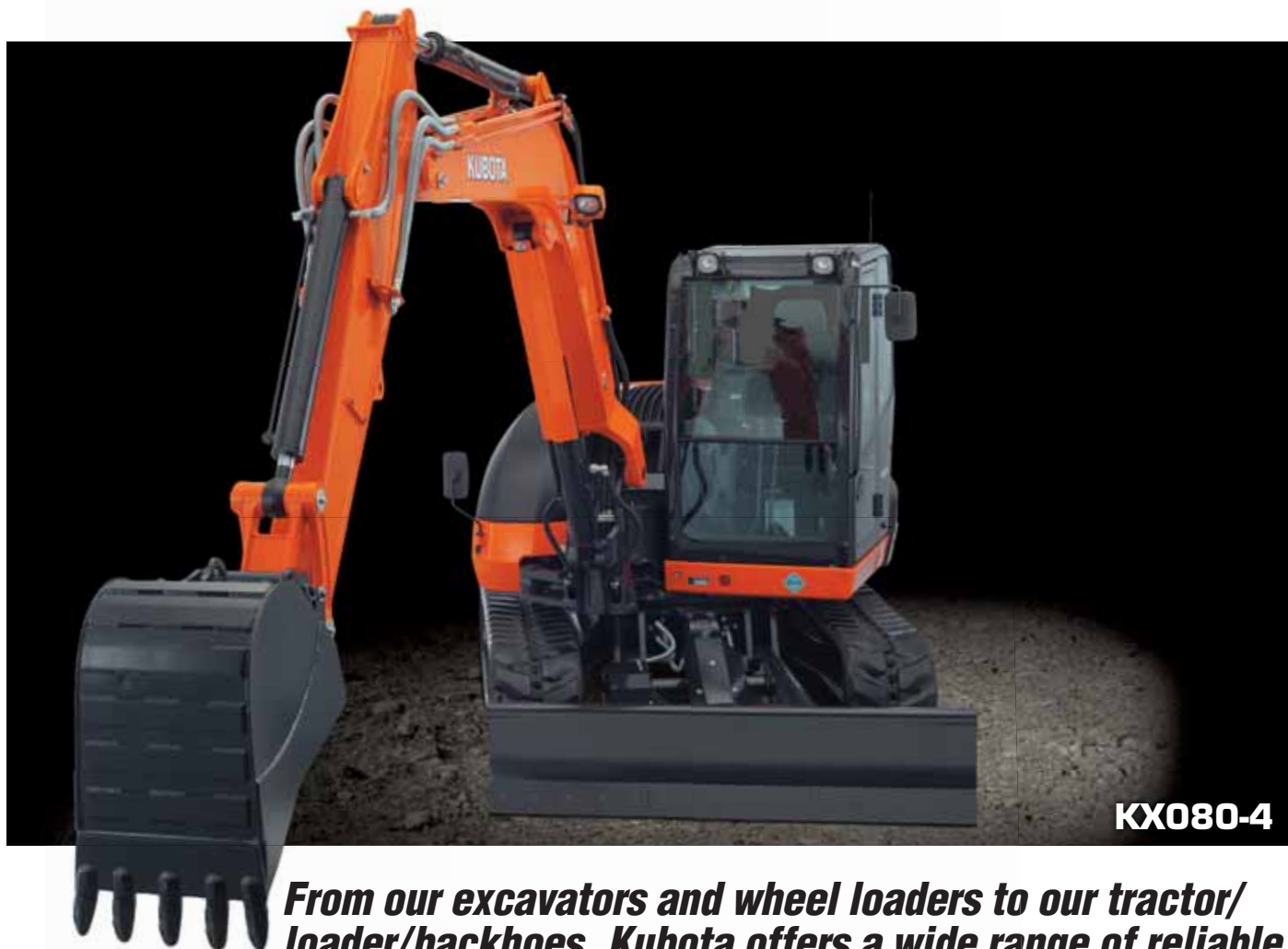
The company reserves the right to change the above specifications without notice. This brochure is for descriptive purposes only. Please contact your local Kubota dealer for warranty information. For your safety, Kubota strongly recommends the use of a Rollover Protective Structure (ROPS) and seat belt in almost all applications.

# DIMENSIONS



Model				SVL75-2		SVL90-2	
A	Length of track on ground	in. (mm)		56.5 (1436)		65.6 (1667)	
B	Track gauge	in. (mm)		53.3 (1355)		59.5 (1512)	
C	Length w/o bucket	in. (mm)		109 (2768)		117 (2972)	
D	Length w/bucket on ground	in. (mm)		140.8 (3576)		148.2 (3764)	
E	Height to top of cab	in. (mm)		82 (2083)		83.4 (2118)	
F	Bucket hinge pin height at max. lift	in. (mm)		119.1 (3025)		128.6 (3266)	
G	Rollback angle at carry position	degree		27		27	
H	Reach at max. lift and dump	in. (mm)		41.7 (1060)		40.7 (1035)	
I	Ground clearance	in. (mm)		11.7 (296)		11.8 (299)	
J	Departure angle	degree		31.5		31	
K	Max. dump angle	degree		40		43	
L	Vehicle width	in. (mm)		68.3 (1735)		77.2 (1962)	
M	Width with bucket	in. (mm)		72 (1829)		80 (2032)	
N	Turning radius from center-machine rear	in. (mm)		107.1 (2720)		113.5 (2882)	





***From our excavators and wheel loaders to our tractor/  
loader/backhoes, Kubota offers a wide range of reliable,  
high-performance construction equipment to get the job  
done right.***



©2013 Kubota Corporation

# Kubota®

**KUBOTA CANADA LTD.**

Head Office:  
5900 14th Avenue, Markham, Ontario L3S 4K4  
TEL: (905) 294-7477 FAX: (905) 294-6651

Visit our web site at: [www.kubota.ca](http://www.kubota.ca)

