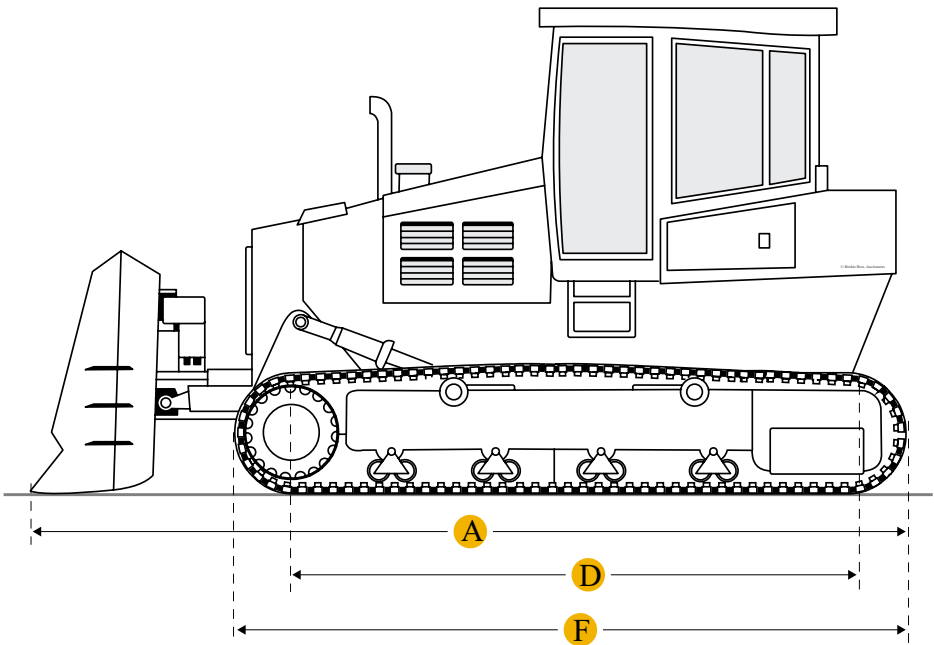
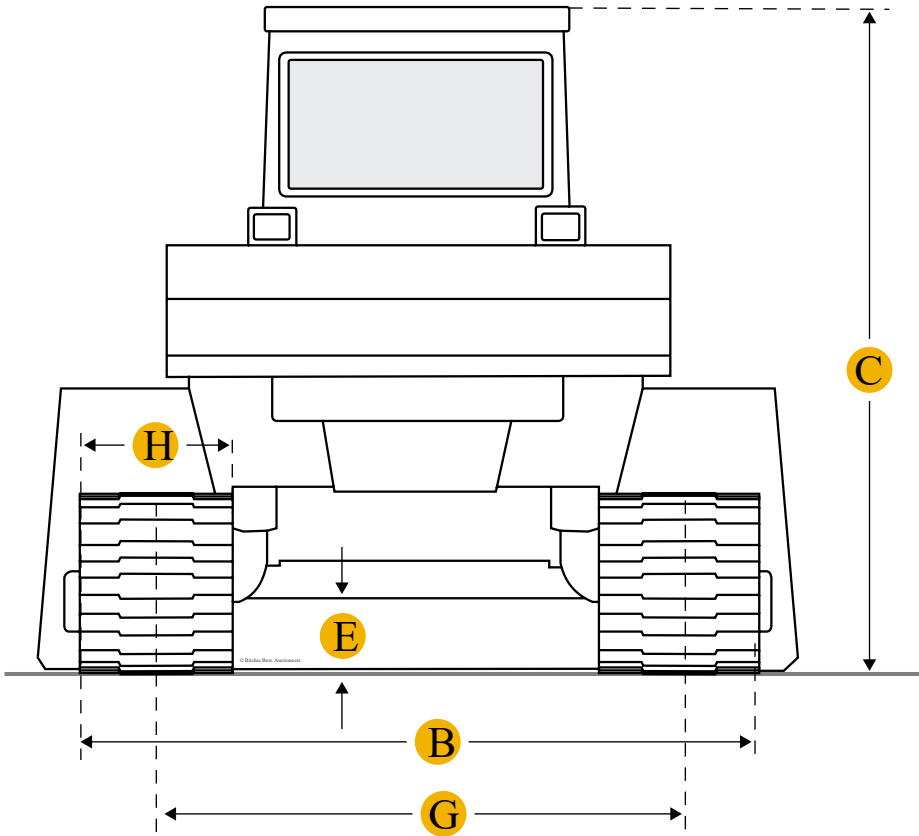
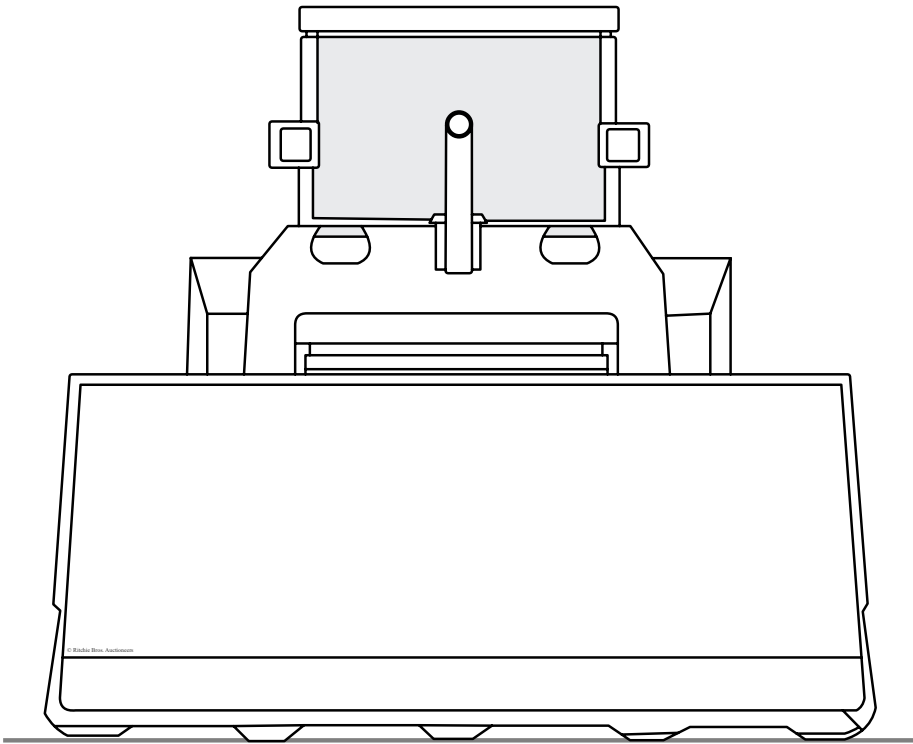


Komatsu D65WX-17 Crawler Tractor



Units

Imperial

Metric

Specifications

Engine

Number Of Cylinders

6

Engine Make

2238

Engine Model

SAA6D114E-5

Gross Power

207 hp

Net Power	205 hp
Power Measured @	1950 rpm
Displacement	8.9 cu in
Operational	
Fuel Capacity	109.6 gal
Cooling System Fluid Capacity	14.3 gal
Engine Oil Capacity	6.6 gal
Hydraulic Fluid Capacity	12.7 gal
Powertrain Fluid Capacity	4.4 gal
Final Drives Fluid Capacity	4.4 gal
Transmission	
Transmission Type	TORQFLOW
Number Of Forward Gears	3
Number Of Reverse Gears	3
Max Speed - Forward	5.3 mph
Max Speed - Reverse	8.3 mph
Hydraulic System	
Pump Type	Piston
Relief Valve Pressure	4050 psi
Pump Flow Capacity	14.5 gal/min

Compare similar models



[John Deere 1050K](#)

Net Power

205 hp



[Komatsu D65PX-15](#)

Net Power

205 hp




[Komatsu D65PX-15E0](#)

Net Power

205 hp

Compare

Find Komatsu D65WX-17 Crawler Tractor for Sale

- 
- [See Komatsu Crawler Tractor for sale rbauction.com](#)
- [See Komatsu Crawler Tractor for sale ironplanet.com](#)
- [See Komatsu Crawler Tractor for sale mascus.com](#)

Need help? Contact Us

 English

Company

+

Popular Searches

+

Looking for equipment or trucks?

Ritchie Bros. sells more new and used industrial equipment and trucks than any other company in the world.

Equipment for sale on rbauction.com

Equipment for sale on ironplanet.com

Equipment for sale on mascus.com

Sell your equipment

© 2007-2018 RitchieSpecs Equipment Specifications Ritchie Bros. Auctioneers © [Privacy Statement](#)| [Terms of Use](#)
OEM specifications are provided for base units. Actual equipment may vary with options.