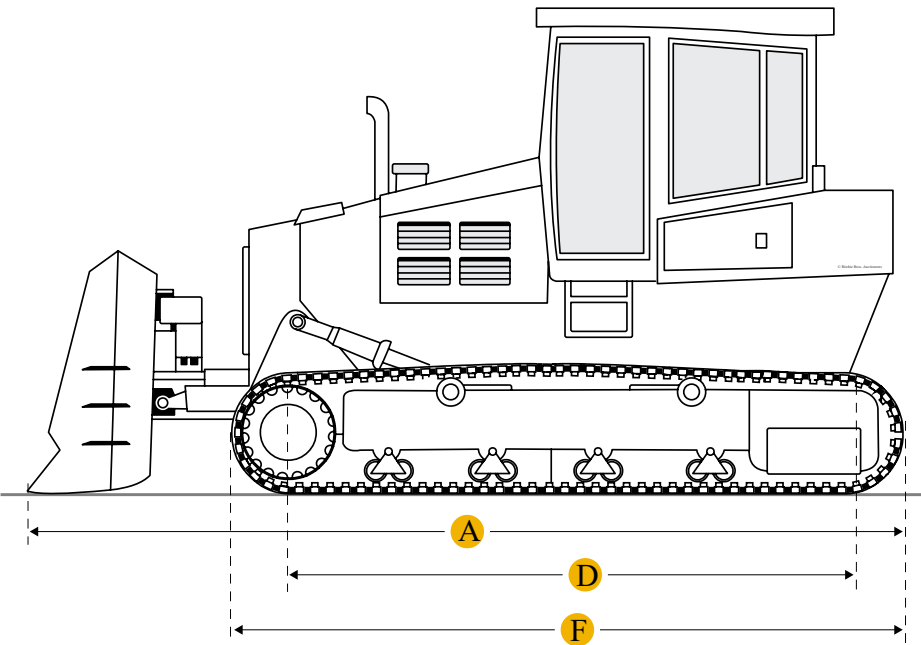
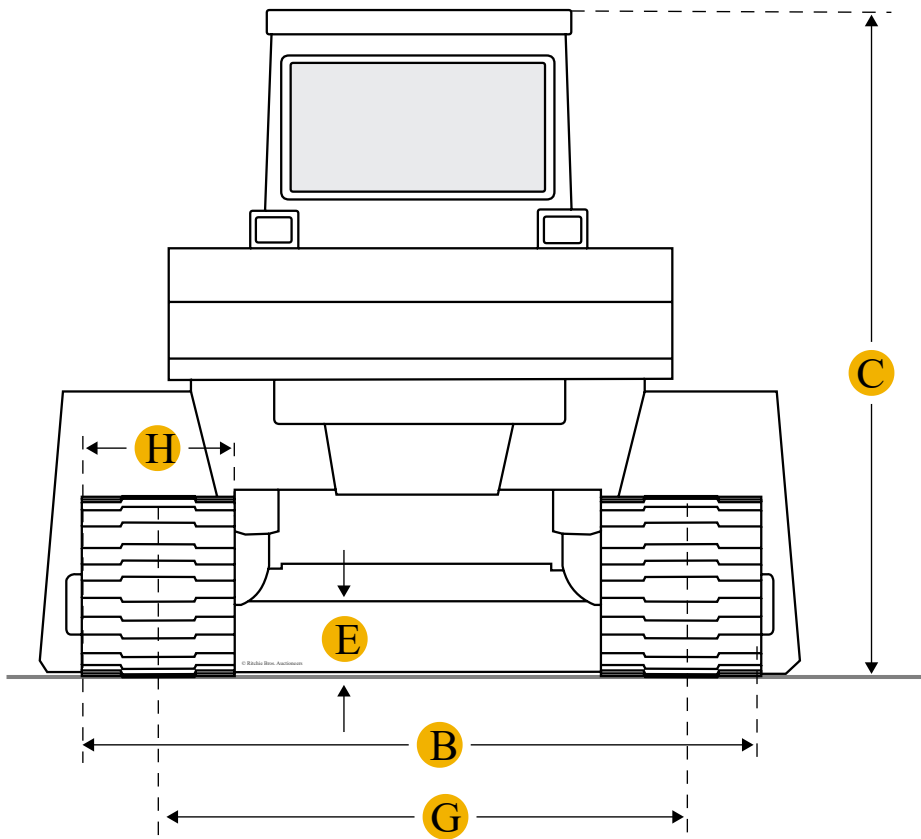
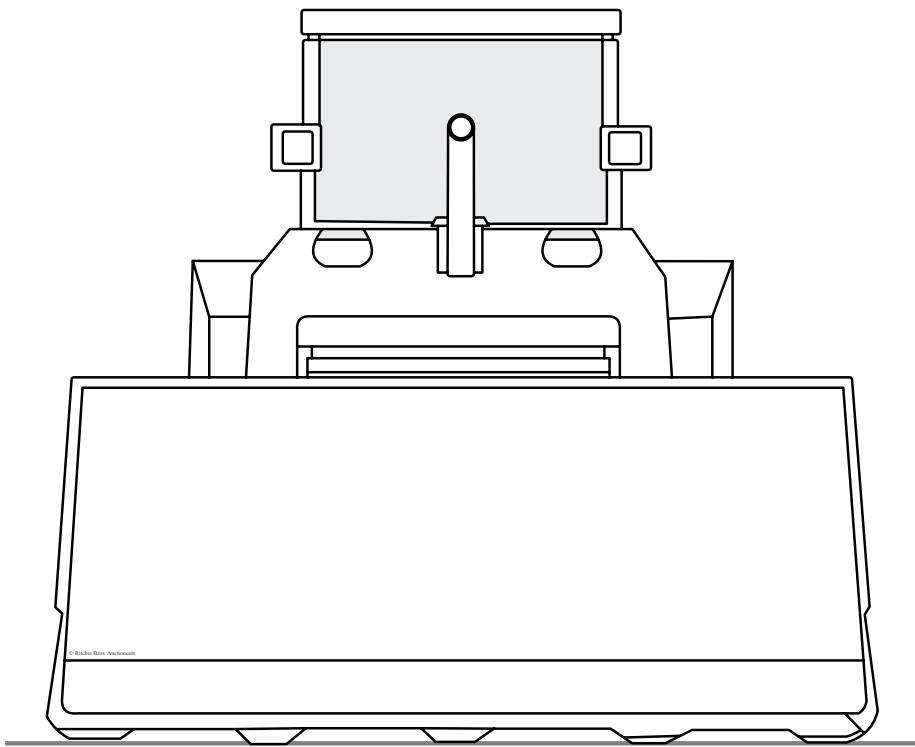




Komatsu D65WX-15 PAT Crawler Tractor



Units Imperial Metric

Dimensions

Dimensions

A	Length W/ Blade	18.34 ft in
C	Height To Top Of Cab	10.58 ft in
D	Length Of Track On Ground	9.75 ft in
E	Ground Clearance	1.33 ft in

Undercarriage		
G	Track Gauge	6.73 ft in
	Ground Pressure	7.05 psi
	Ground Contact Area	6097 in2
	Number Of Shoes Per Side	42
	Number Of Track Rollers Per Side	8

Specifications

Engine		
	Number Of Cylinders	6
	Engine Make	2238
	Engine Model	SAA6D114E-3
	Gross Power	207 hp
	Displacement	505 cu in
	Aspiration	Turbocharged, air-to-air aftercooled
Operational		
	Operating Weight	47310 lb
	Fuel Capacity	109.6 gal
	Cooling System Fluid Capacity	9.8 gal
	Engine Oil Capacity	7.4 gal
	Final Drives Fluid Capacity	7.1 gal
Transmission		
	Transmission Type	multi-disc clutch transmission
	Number Of Forward Gears	3
	Number Of Reverse Gears	3
	Max Speed - Forward	6.3 mph
	Max Speed - Reverse	8.1 mph

Hydraulic System

Relief Valve Pressure2990 psi

Pump Flow Capacity55.5 gal/min

Compare similar models

☐ [Caterpillar D6N WH XL](#)

Operating Weight38224 lb

☐ [Caterpillar D6T \(Tier 4 Final\)](#)

Operating Weight46263 lb

☐ [Komatsu D65EX-15SL](#)

Operating Weight52097 lb

Compare

Find Komatsu D65WX-15 PAT Crawler Tractor for Sale

- [See Komatsu Crawler Tractor for sale rbauction.com](#)
- [See Komatsu Crawler Tractor for sale ironplanet.com](#)
- [See Komatsu Crawler Tractor for sale mascus.com](#)

Need help? Contact Us

English

Company +

Popular Searches +

Looking for equipment or trucks?

Ritchie Bros. sells more new and used industrial equipment and trucks than any other company in the world.

Equipment for sale on rbauction.com

Equipment for sale on ironplanet.com

Equipment for sale on mascus.com

Sell your equipment

© 2007-2018 RitchieSpecs Equipment Specifications Ritchie Bros. Auctioneers © [Privacy Statement](#) | [Terms of Use](#)
OEM specifications are provided for base units. Actual equipment may vary with options.