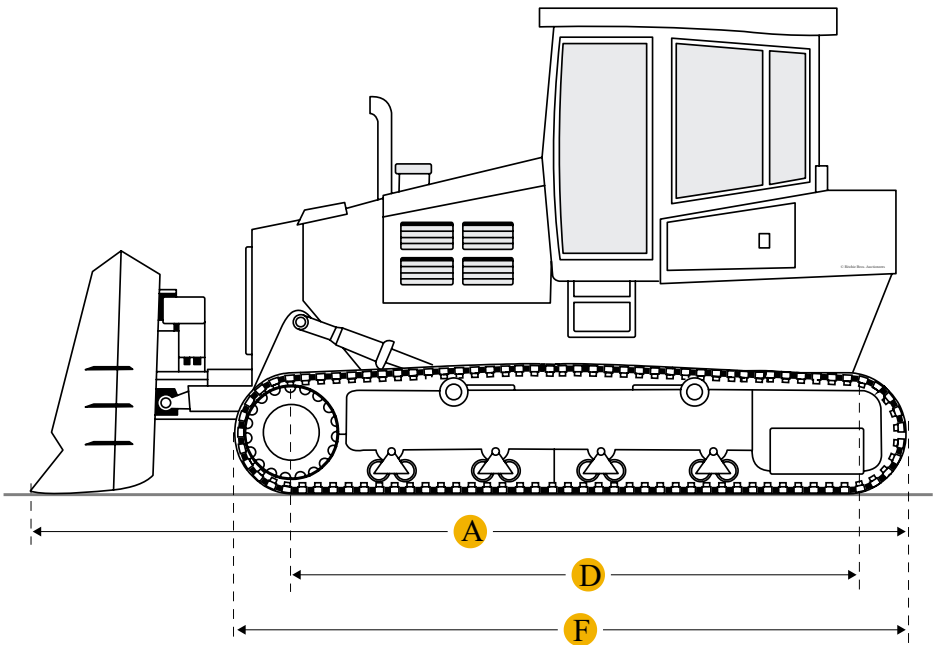
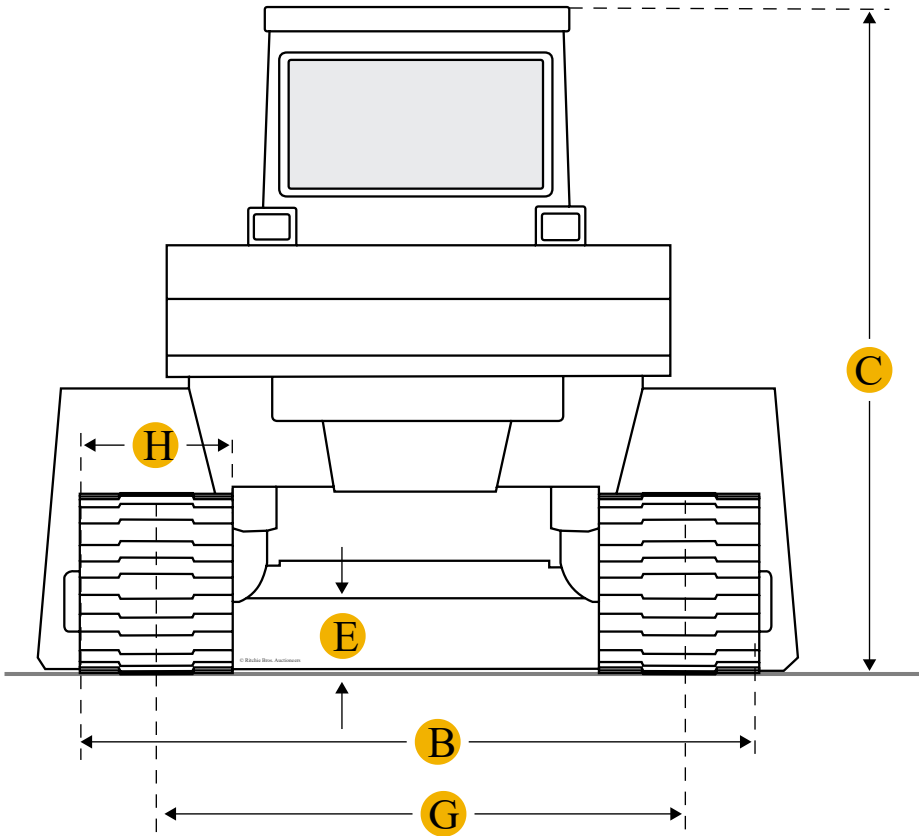


Komatsu D65WX-15 Crawler Tractor



Units

Imperial

Metric

Dimensions

Dimensions

A	Length W/ Blade	17.83 ft in
C	Height To Top Of Cab	10.58 ft in
D	Length Of Track On Ground	8.75 ft in
E	Ground Clearance	1.33 ft in

Undercarriage

Ground Contact Area	6717 in2
Ground Pressure	5.92 psi
Number Of Shoes Per Side	39
Number Of Track Rollers Per Side	7

Specifications

Engine

Number Of Cylinders	6
Engine Make	2238
Engine Model	SAA6D114E-3
Gross Power	207 hp
Power Measured @	1950 rpm
Displacement	505 cu in
Aspiration	Turbocharged, air-to-air aftercooled

Operational

Operating Weight	46170 lb
Fuel Capacity	109.6 gal
Cooling System Fluid Capacity	9.8 gal
Engine Oil Capacity	7.4 gal
Final Drives Fluid Capacity	7.1 gal

Transmission

Transmission Type	planetary gear, multi-disc clutch transmission
Number Of Forward Gears	3
Number Of Reverse Gears	3
Max Speed - Forward	6.3 mph
Max Speed - Reverse	8.1 mph

Hydraulic System

**Relief Valve Pressure**2990 psi

**Pump Flow Capacity**55.5 gal/min

Compare similar models

☐ [John Deere 850K](#)

**Operating Weight**19304 lb

☐ [Caterpillar D6T \(Tier 4 Final\).](#)

**Operating Weight**46263 lb

☐ [Caterpillar D6N Tier 4 Interim/Stage IIIB](#)

**Operating Weight**36392 lb

Compare

Find Komatsu D65WX-15 Crawler Tractor for Sale

- [See Komatsu Crawler Tractor for sale rbauction.com](#)
- [See Komatsu Crawler Tractor for sale ironplanet.com](#)
- [See Komatsu Crawler Tractor for sale mascus.com](#)

Need help? Contact Us

English

Company +

Popular Searches +

Looking for equipment or trucks?

Ritchie Bros. sells more new and used industrial equipment and trucks than any other company in the world.

Equipment for sale on rbauction.com

Equipment for sale on ironplanet.com

Equipment for sale on mascus.com

Sell your equipment

© 2007-2018 RitchieSpecs Equipment Specifications Ritchie Bros. Auctioneers © [Privacy Statement](#) | [Terms of Use](#)  
OEM specifications are provided for base units. Actual equipment may vary with options.