

Mid-size dozer

D65EXi-18

Horsepower	217 HP @ 1,950 rpm
Operating weight	45,780 lbs.
Blade capacity	7.3 yd ³

[View all specs](#)

Request a quote

Find a dealer

[Competitive comparison](#)

[Download brochure](#)

[Download spec sheet](#)

[Financing information](#)

[Order parts](#)



A workhorse for your fleet

Need an all-around workhorse designed for years of high productivity? The D65EXi-18 is tough to beat. A large capacity outside push frame semi-U blade helps make it the backbone of your dozer fleet and includes extended wear life undercarriage 24" PLUS (Parallel Link Undercarriage System) rotating bushing tracks.

Get new operators up to speed quickly

Go from mass ex to finished grading faster than ever

Fully integrate 3D design data into your machines

Empower operators to work efficiently, pass after pass

Features and benefits





Close the operator skill gap

Machine logic allows the dozer to continuously learn the terrain and make calculated decisions for the next pass. Intelligent Machine Control helps lessen the skill gap between new and experienced operators.



Advanced machine control

In select situations — auto stripping, rough dozing, spreading, advanced finish grading — operators can opt for nearly 100% machine control auto usage. They can even apply automatic control without having a 3D model.



A machine that learns from the operator

Automatic functions give the dozer the ability to learn from operator's blade input, resulting in more adaptability, easier operation and less reliance on operator input.



Outstanding blade response for finish grading

To deliver unparalleled grading performance, IMC enables the dozer to look ahead at grade transitions and alter the blade angle accordingly.

Specifications for D65EXi-18

US system

Metric

Expand all

Engine

Model	Komatsu SAA6D114E-6*
Type	4-cycle, water-cooled, direct injection
Aspiration	Komatsu variable geometry turbocharged, air-to-air aftercooled
Number of cylinders	6
Bore x stroke	4.49 x 5.69 in
Piston displacement	540 in ³
Governor	All-speed and mid-range, electronic

Horsepower:

SAE J1995 - Gross	220 HP
ISO 9249 / SAE J1349 - Net	217 HP
Rated rpm	1,950 rpm
Fan drive type	Hydraulic



Lubrication system:

Method	Gear pump, force lubrication
Filter	Full-flow

*EPA Tier 4 Final emissions certified

TORQFLOW Transmission

Komatsu TORQFLOW transmission consists of a water-cooled, 3-element, 1-stage, 2-phase, torque converter with lockup clutch, and a planetary gear, multiple-disc clutch transmission which is electronically controlled, hydraulically actuated and force-lubricated for optimum heat dissipation. Shift lock lever and neutral safety switch.

Travel speed	Forward	Reverse
1st	2.3 mph	2.8 mph
2nd	3.5 mph	4.2 mph
3rdL	4.5 mph	5.4 mph
3rd	7.0 mph	8.5 mph

Steering System

Palm Command Control System (PCCS) lever controls for all directional movements. Pushing the PCCS lever forward results in forward machine travel, while pulling it rearward reverses the machine. Simply tilt the PCCS lever to the left for a left turns, tilt it right for right turns.



Hydrostatic Steering System (HSS) power has been increased 25% by a larger HSS motor, greater hydraulic pump flow, and more engine power while steering. The result is more powerful turns and quicker counter-rotation. Wet, multiple-disc, pedalcontrolled service brakes are spring-actuated and hydraulically released. Gear shift lock lever also applies parking brake.

Minimum turning radius:

D65EX-18	6 ft. 3 in
D65EXi-18	6 ft. 3 in
D65PX-18	7 ft. 3 in
D65PXi-18	7 ft. 3 in
D65WX-18	6 ft. 11 in

Undercarriage

Suspension	Oscillating equalizer bar and pivot shaft
Track roller frame	Monocoque, large section, durable construction
Rollers and idlers	Lubricated



Track shoes	Parallel Link Undercarriage System (PLUS) with lubricated rotating bushings for extended system wear life and lower maintenance costs. Track tension is easily adjusted with grease gun.
-------------	--

Final Drive

Double-reduction planetary gear final drives increase drawbar pull and reduce stresses for longer life. Segmented sprocket teeth are bolt-on for easy replacement. Triple labyrinth housing protects the final drive seals.

Hydraulic System

Closed-center load sensing system (CLSS) designed for precise and responsive control, and for efficient simultaneous operation.

Hydraulic control units:
All spool valves externally mounted beside the hydraulic tank. Piston type hydraulic pump with capacity (discharge flow) of 65.5 US gpm at rated engine rpm.

Relief valve setting	4,050 psi
----------------------	-----------

Control valves:

Spool control valves for SIGMADOZER® or straight tilt dozer

Positions:

Blade lift	Raise, hold, lower, and
------------	-------------------------



	float
Blade tilt	Right, hold, and left
Rear attachment	Raise, hold, and lower

Service Refill Capacities

Fuel tank	109.6 US gal
DEF tank	6.2 US gal
Coolant	12.9 US gal
Engine	8.1 US gal
Torque converter, transmission, bevel gear, and steering system	12.7 US gal
Final drive (each side)	7.1 US gal

Support you can count on

Financing

My Komatsu



Financing can be a major advantage for your operation, enabling you to get the equipment and service you need with terms to fit your balance sheet. Take advantage of competitive and flexible financial tools with Komatsu financing.

Access and manage all your machine telematics data, parts manuals, service manuals, software and parts ordering information from a single source anywhere, anytime.

Improve your productivity with Smart Construction

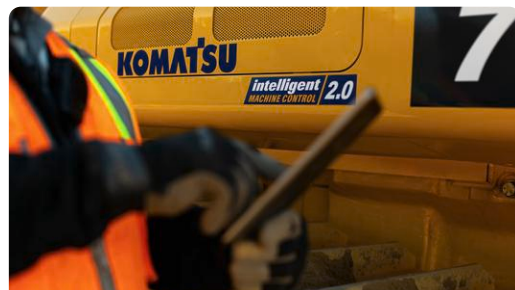
Construction workforce shortages are prompting many firms to innovate their way to greater productivity.

Technology that works as hard as you do

Intelligent Machine Control

Smart Construction

First U.S. IMC Customer:
5 Years of Growth



Productivity is the key to success on your job site, and the faster your crew can reach a state of maximum productivity, the better. Now you have a powerful tool to help make that happen with Komatsu's Intelligent Machine Control (IMC). Incorporating a host of advanced, proprietary machine technology, IMC gives you the opportunity to take advantage of



sophisticated,
productivity-enhancing
automation and cutting-
edge job site design.
[Learn more](#)

Related products



D65PXi-18

Horsepower	217 HP @ 1,950 rpm
Operating weight	48,620 lbs.
Blade capacity	4.8 yd ³

D65EX-18

Horsepower	217 HP @ 1,950 rpm
Operating weight	45,628 - 48,796 lbs.
Blade capacity	7.3 yd ³

D65PX-18

Horsepower	217 HP @ 1,950 rpm
Operating weight	48,444 - 51,960 lbs.
Blade capacity	4.8 yd ³



Find what works for you

Used
equipment

Rental

Dealer
locator

Parts
information

Komatsu is a leading manufacturer of construction, mining, forestry, and industrial heavy equipment.

Discover

Products
Parts and attachments
Services and support
Industries
Technology

Tools

Request a quote
Locator tool
My Komatsu
Competitive comparison
Mining Analytics
Platform

Company

About
Blog
Careers
Success stories
Commitment to society
Events
Merchandise
Newsroom
Investor relations

Connect

Contact us
Social media
Customer / dealer portals
Suppliers



[United States – English](#)

[Units: US Customary](#)

[California supply chain transparency act](#) [Privacy statement](#)

[Privacy notice for California residents](#)

[California Voluntary Carbon Market Disclosures Act](#) [Cookie policy](#)

[Fighting Against Forced Labour and Child Labour in Supply Chains Act \(Canada\)](#)

[Modular Mining legal notices](#) [Terms of use](#) [Transparency in Coverage](#)

[Sitemap](#)

Copyright © 2025 Komatsu. All rights reserved.

