

Mid-size dozer

D65EX-18

Horsepower	217 HP @ 1,950 rpm
Operating weight	45,628 - 48,796 lbs.
Blade capacity	7.3 yd ³

[View all specs](#)

[Request a quote](#)

[Find a dealer](#)

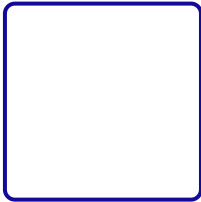
[Competitive comparison](#)

[Download brochure](#)

[Download spec sheet](#)

[Order parts](#)

[Financing information](#)



Torque converter dozers for your heavy jobs

Need an all-around workhorse designed for years of high productivity? The D65EX-18 is tough to beat. A large capacity outside push frame semi-U blade helps make it the backbone of your dozer fleet and includes extended wear life undercarriage 24" PLUS (Parallel Link Undercarriage System) rotating bushing tracks.

Engineered for powerful
dozing

Excellent blade capacity

Quiet cab with smooth
ride and great visibility

Automated blade control
with iMC

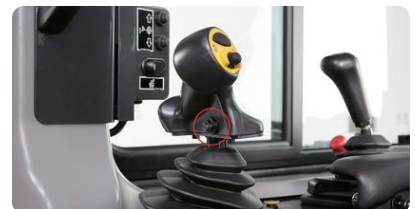
Features and benefits



**Custom build the
dozer you need**



**Helps minimize fuel
use**



**Controls help fight
operator fatigue**

All the dozers in the D65/85/155 family offer you outstanding power, economy and reliability. Customize yours with the blade (straight, Semi-U, Sigmadozer and Full U (D155 only)), track shoe width and horsepower combo best suited to your particular application.



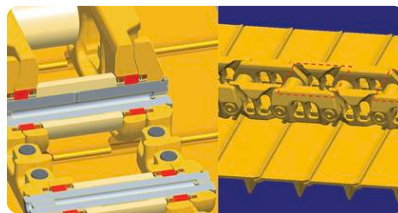
Smooth, powerful handling

Your operators can execute smooth powerful turns with the hydrostatic steering system. It transmits engine power to both tracks without power interruption and minimizes turning radius with counter-rotation while in neutral.



Intelligent Machine Control (iMC)

An advanced Tier 4 engine offers you a potent combo of power and fuel efficiency. An auto idle shutdown, adjustable from 5-60 minutes, also helps cut fuel use and emissions.



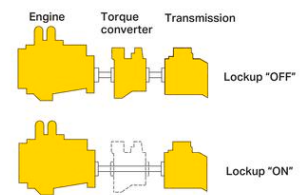
Long-lasting undercarriage

Get the most from your dozer. The Parallel Link Undercarriage System (PLUS) with rotating bushings delivers up to twice the life of our conventional undercarriage with no pin and bushing turn required. Parts wear evenly and last longer before needing replacement.



Help operators stay focused

Operators will enjoy the palm command electronic control joysticks that fit the natural relaxed shape of their hands. Auto-shift or manual-shift modes are easily selected with one push of a button for precision with less fatigue over the course of a shift.



Work with fuel-efficient power

Seek maximum work efficiency with a lock-up torque converter. It determines the appropriate gear based on load and conditions. The lockup mechanism then automatically transfers engine power directly to the transmission, helping boost drive train efficiency.

With automatic dozing, rough cut to finish grade, iMC-equipped machines make every pass count. Dozers “learn” operator blade input. In select situations, operators can opt for near-100% auto control. And, iMC helps new operators get up to speed quickly.

Your operators perform best when they’re comfortable. That’s why they’ll love the air suspension seat with lumbar support and tilt. It’s easy for them to adjust to suit their needs, and electric heat helps them stay comfortable in the cold.

Specifications for D65EX-18

Full Specifications Standard Optional

US system Metric

Expand all

Engine

Model	Komatsu SAA6D114E-6*
Type	4-cycle, water-cooled, direct injection
Aspiration	Komatsu variable geometry turbocharged, air-to-air aftercooled
Number of cylinders	6



Bore x stroke	4.49 x 5.69 in
Piston displacement	540 in ³
Governor	All-speed and mid-range, electronic

Horsepower:

SAE J1995 - Gross	220 HP
ISO 9249 / SAE J1349 - Net	217 HP
Rated rpm	1,950 rpm
Fan drive type	Hydraulic

Lubrication system:

Method	Gear pump, force lubrication
Filter	Full-flow

*EPA Tier 4 Final emissions certified

Final Drive

Double-reduction planetary gear final drives increase drawbar pull and reduce stresses for longer life. Segmented sprocket teeth are bolt-on for easy replacement. Triple labyrinth housing protects the final drive seals.

Hydraulic System

Closed-center load sensing system (CLSS) designed for precise and responsive control, and for efficient simultaneous operation.



.....

Hydraulic control units:

All spool valves externally mounted beside the hydraulic tank.
Piston type hydraulic pump with capacity (discharge flow) of 65.5 US gpm at rated engine rpm.

Relief valve setting	4,050 psi
----------------------	-----------

Control valves:

**Spool control valves for SIGMADOZER®
or straight tilt dozer**

Positions:

Blade lift	Raise, hold, lower, and float
Blade tilt	Right, hold, and left
Rear attachment	Raise, hold, and lower

.....

Service Refill Capacities

Fuel tank	109.6 US gal
DEF tank	6.2 US gal
Coolant	12.9 US gal
Engine	8.1 US gal

.....



Torque converter, transmission, bevel gear, and steering system	12.7 US gal
Final drive (each side)	7.1 US gal

.....

Steering System

Palm Command Control System (PCCS) lever controls for all directional movements. Pushing the PCCS lever forward results in forward machine travel, while pulling it rearward reverses the machine. Simply tilt the PCCS lever to the left for a left turns, tilt it right for right turns.

Hydrostatic Steering System (HSS) power has been increased 25% by a larger HSS motor, greater hydraulic pump flow, and more engine power while steering. The result is more powerful turns and quicker counter-rotation. Wet, multiple-disc, pedalcontrolled service brakes are spring-actuated and hydraulically released. Gear shift lock lever also applies parking brake.

.....

Minimum turning radius:

D65EX-18	6 ft. 3 in
D65EXi-18	6 ft. 3 in
D65PX-18	7 ft. 3 in
D65PXi-18	7 ft. 3 in
D65WX-18	6 ft. 11 in

.....

TORQFLOW Transmission

.....



Komatsu TORQFLOW transmission consists of a water-cooled, 3-element, 1-stage, 2-phase, torque converter with lockup clutch, and a planetary gear, multiple-disc clutch transmission which is electronically controlled, hydraulically actuated and force-lubricated for optimum heat dissipation. Shift lock lever and neutral safety switch.

Travel speed	Forward	Reverse
1st	2.3 mph	2.8 mph
2nd	3.5 mph	4.2 mph
3rdL	4.5 mph	5.4 mph
3rd	7.0 mph	8.5 mph

Undercarriage

Suspension	Oscillating equalizer bar and pivot shaft
Track roller frame	Monocoque, large section, durable construction
Rollers and idlers	Lubricated
Track shoes	Parallel Link Undercarriage System (PLUS) with lubricated rotating bushings for extended system wear life and lower maintenance costs. Track tension is easily adjusted with grease gun.

Tractor for inside mounted blade (Requires Waste Package)*

	D65EX-18
Number of track rollers (each side)	7
Type of shoes (standard)	MS PLUS
Number of shoes (each side)	42
Grouser height	2.6 in
Shoe width (standard)	34 in
Ground contact area (ISO 16754)	6,341 in ²
Ground pressure (tractor) (ISO 16754)	6.4 psi
Track gauge	6 ft. 2 in
Length of track on ground	9 ft. 9 in

**See page 17 of spec sheet for tractor/blade combinations.*

Support you can count on

Financing

Financing can be a major advantage for your operation, enabling you to get the equipment and service you need with terms to fit your

My Komatsu

Access and manage all your machine telematics data, parts manuals, service manuals, software and parts ordering information from a

Don't overlook the undercarriage

Keeping the undercarriage in good working condition can significantly minimize

balance sheet. Take advantage of competitive and flexible financial tools with Komatsu financing.

single source anywhere, anytime.

repair expenses and lower per-hour operating costs.

Technology that works as hard as you do

Telematics



Telematics data can drive results for business operations, but only when you can collect and analyze it efficiently. Get the insights that can benefit your bottom line.

[Learn more](#)

Related Products





D65PX-18

Horsepower	217 HP @ 1,950 rpm
Operating weight	48,444 - 51,960 lbs.
Blade capacity	4.8 yd ³

D65WX-18

Horsepower	217 HP @ 1,950 rpm
Operating weight	48,760 - 51,529 lbs.
Blade capacity	7.7 yd ³

D71EX-24

Horsepower	237 HP @ 2,200 rpm
Operating weight	49,825 lbs.
Blade capacity	5.8 yd ³

Find what works for you

Used
equipment

Rental

Dealer
locator

Parts
information

Komatsu is a
leading
manufacturer of
construction,
mining, forestry,

Discover
Products
Parts and
attachments
Services and
support

Tools
Request a
quote
Locator tool
My Komatsu

Company
About
Blog
Careers
Success
stories

Connect
Contact us
Social
media
Customer /
dealer

and industrial heavy equipment.

Industries Technology

Competitive comparison Mining Analytics Platform

Commitment to society Events Merchandise Newsroom Investor relations

portals Suppliers

United States – English

Units: US Customary

California supply chain transparency act Privacy statement

Privacy notice for California residents

California Voluntary Carbon Market Disclosures Act Cookie policy

Fighting Against Forced Labour and Child Labour in Supply Chains Act (Canada)

Modular Mining legal notices Terms of use Transparency in Coverage

Sitemap

Copyright © 2025 Komatsu. All rights reserved.

