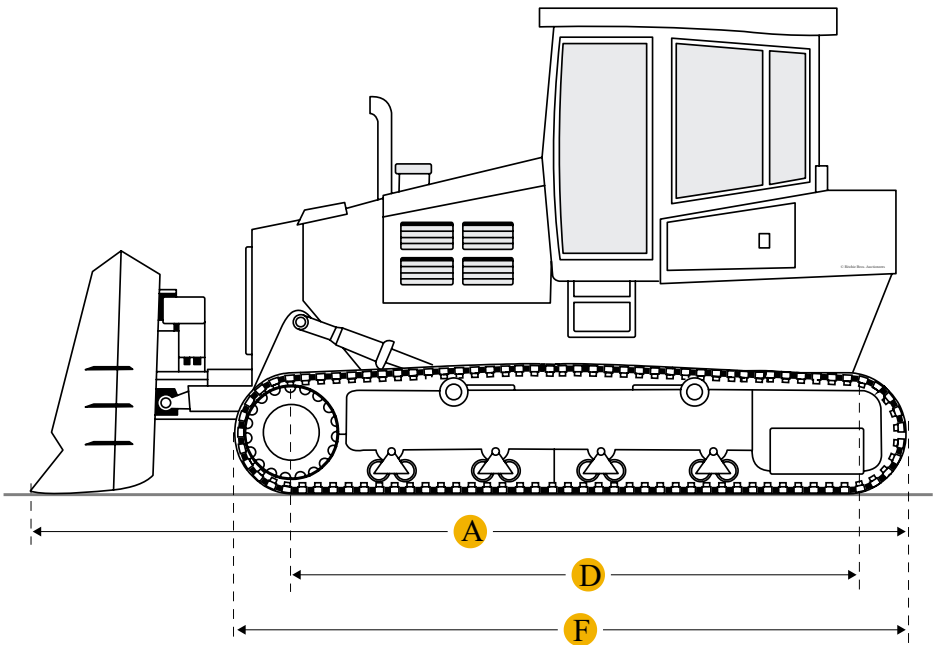
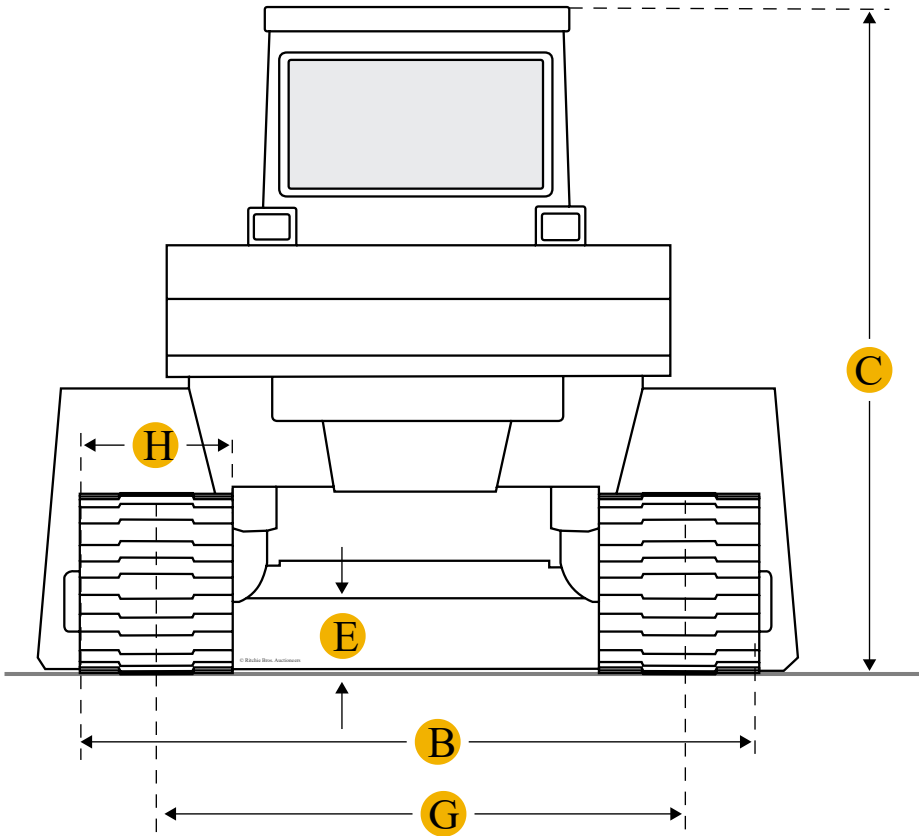


Komatsu D65EX-15SL Crawler Tractor



Units

Imperial

Metric

Dimensions

Dimensions

A	Length W/ Blade	17.98 ft in
B	Width Over Tracks	7.83 ft in
C	Height To Top Of Cab	11.67 ft in
D	Length Of Track On Ground	8.75 ft in

E	Ground Clearance	1.33 ft in
F	Length W/O Blade	14.75 ft in
Undercarriage		
G	Track Gauge	6.17 ft in
H	Standard Shoe Size	20 in
	Number Of Track Rollers Per Side	7
	Ground Contact Area	4230 in2
	Track Pitch	74 in

Specifications

Engine		
	Number Of Cylinders	6
	Engine Make	2238
	Engine Model	SAA6D114E-3
	Net Power	205 hp
	Displacement	505 cu in
Operational		
	Operating Weight	52097 lb
Standard Blade		
	Width	11.4 ft in
	Height	6.5 in

Compare similar models



[Caterpillar D6R Series III](#)

Operating Weight

41159 lb



[Caterpillar D6N WH](#)

Operating Weight

40818 lb

Caterpillar D7R Series 2

Operating Weight

55786 lb

Compare

Find Komatsu D65EX-15SL Crawler Tractor for Sale

See Komatsu Crawler Tractor for sale rbauction.com

See Komatsu Crawler Tractor for sale ironplanet.com

See Komatsu Crawler Tractor for sale mascus.com

Need help? Contact Us

English

Company

+

Popular Searches

+

Looking for equipment or trucks?

Ritchie Bros. sells more new and used industrial equipment and trucks than any other company in the world.

Equipment for sale on rbauction.com

Equipment for sale on ironplanet.com

Equipment for sale on mascus.com

Sell your equipment

© 2007-2018 RitchieSpecs Equipment Specifications Ritchie Bros. Auctioneers © [Privacy Statement](#)[Terms of Use](#)
OEM specifications are provided for base units. Actual equipment may vary with options.