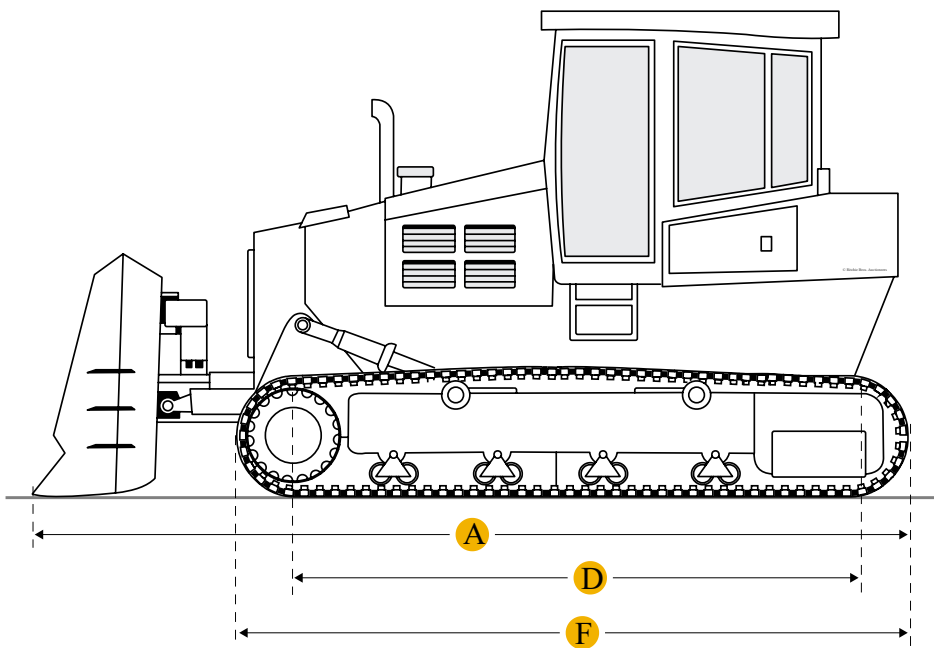
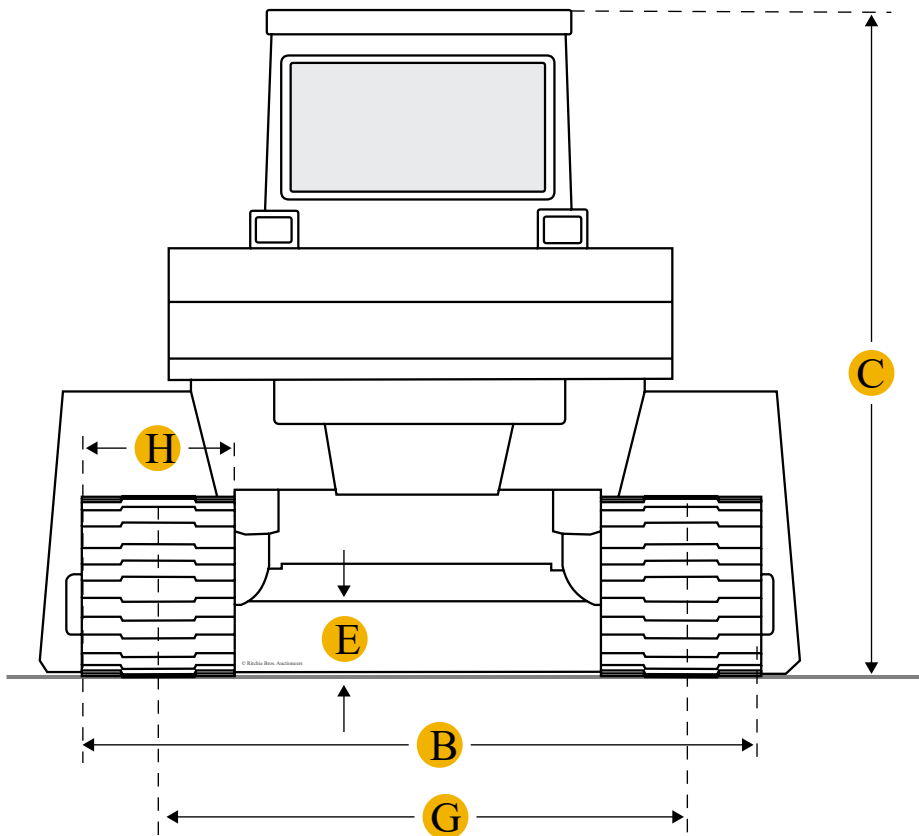
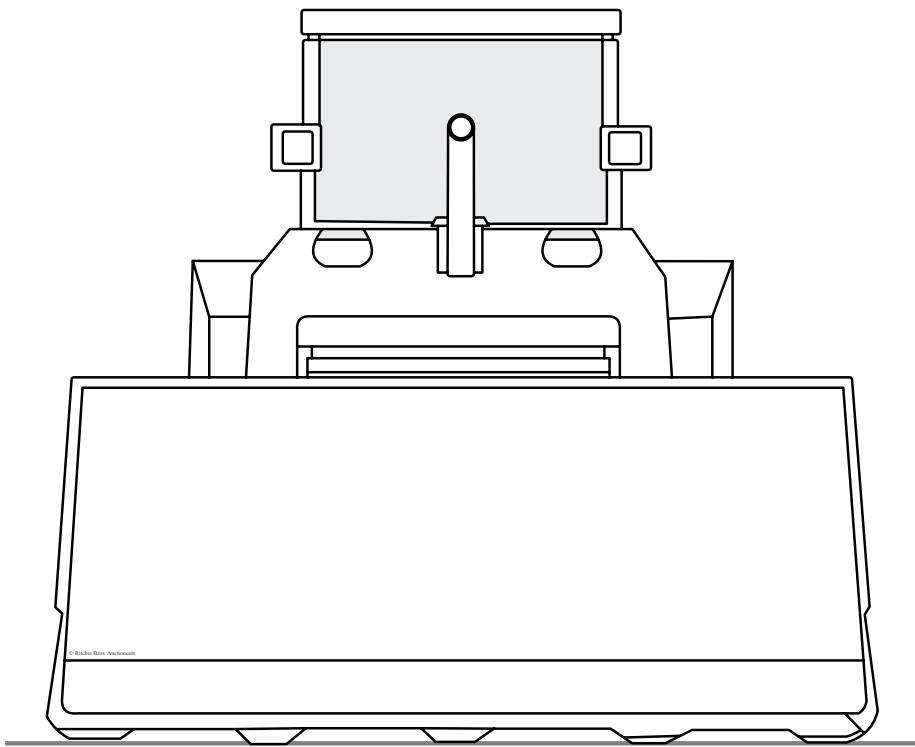




Komatsu D65EX-12E Crawler Tractor



Units Imperial Metric

Dimensions

Dimensions

A	Length W/ Blade	17.26 ft in
B	Width Over Tracks	7.85 ft in
C	Height To Top Of Cab	10.03 ft in
D	Length Of Track On Ground	8.78 ft in

E	Ground Clearance	1.33 ft in
F	Length W/O Blade	14.34 ft in
Undercarriage		
G	Track Gauge	6.17 ft in
H	Standard Shoe Size	20.08 in
	Number Of Carrier Rollers Per Side	2
	Number Of Track Rollers Per Side	7
	Track Pitch	8 in
	Number Of Shoes Per Side	39

---

## Specifications

Engine		
	Number Of Cylinders	6
	Engine Make	2238
	Engine Model	S6D125E-2-A
	Gross Power	190 hp
	Power Measured @	1950 rpm
	Displacement	74.8 cu in
Operational		
	Operating Weight	41667.4 lb
Transmission		
	Transmission Type	TF,HSS
	Number Of Forward Gears	3
	Number Of Reverse Gears	3
Standard Blade		
	Width	11.3 ft in
	Height	48.3 in

---

# Compare similar models

☐

[Caterpillar D6R XL](#)

Operating Weight

41900 lb

☐

[Caterpillar D6R XL Series II](#)

Operating Weight

41914 lb

☐

[John Deere 850C LGP](#)

Operating Weight

42048 lb

Compare

## Find Komatsu D65EX-12E Crawler Tractor for Sale

- [See Komatsu Crawler Tractor for sale rbauction.com](#)
- [See Komatsu Crawler Tractor for sale ironplanet.com](#)
- [See Komatsu Crawler Tractor for sale mascus.com](#)

Need help? Contact Us

 English

Company

+

Popular Searches

+

### Looking for equipment or trucks?

Ritchie Bros. sells more new and used industrial equipment and trucks than any other company in the world.

Equipment for sale on rbauction.com

Equipment for sale on ironplanet.com

Equipment for sale on mascus.com

Sell your equipment

© 2007-2018 RitchieSpecs Equipment Specifications Ritchie Bros. Auctioneers © [Privacy Statement](#)| [Terms of Use](#)  
OEM specifications are provided for base units. Actual equipment may vary with options.