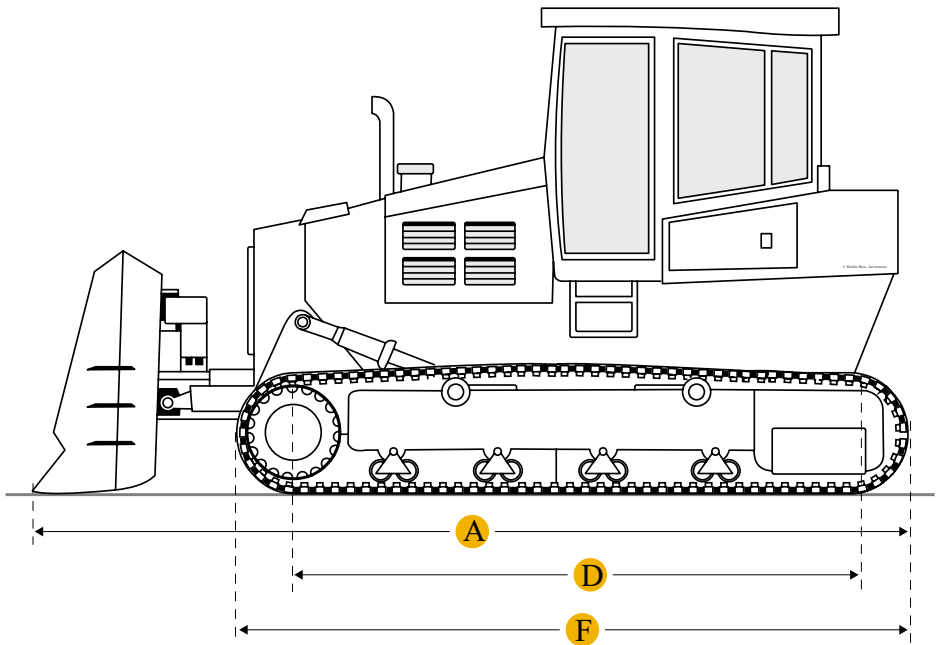
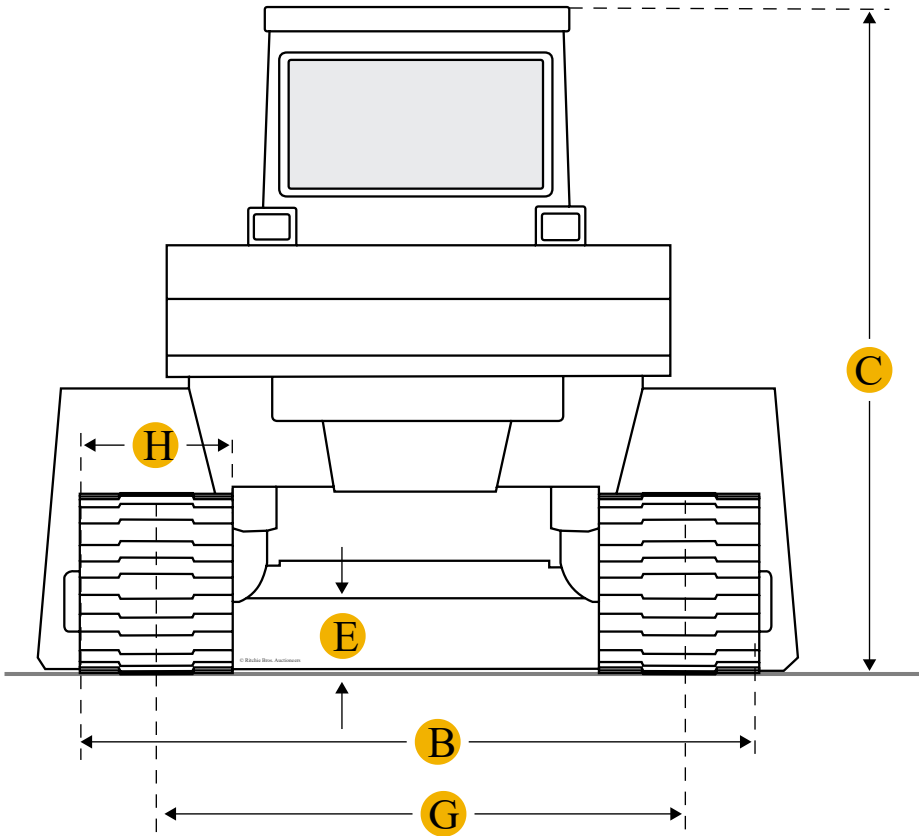


Komatsu D65A-8 Crawler Tractor



Units

Imperial

Metric

Dimensions

Dimensions

A	Length W/ Blade	17 ft in
B	Width Over Tracks	7.85 ft in
C	Height To Top Of Cab	9.9 ft in
D	Length Of Track On Ground	7.98 ft in

E	Ground Clearance	1.32 ft in
F	Length W/O Blade	13.36 ft in
Undercarriage		
G	Track Gauge	6.17 ft in
H	Standard Shoe Size	20.08 in
	Number Of Carrier Rollers Per Side	2
	Number Of Track Rollers Per Side	6
	Track Pitch	8 in
	Number Of Shoes Per Side	37

Specifications

Engine		
	Number Of Cylinders	6
	Engine Make	2238
	Engine Model	6D125-1
	Gross Power	160 hp
	Power Measured @	1850 rpm
	Displacement	673.8 cu in
Operational		
	Operating Weight	35692.9 lb
Transmission		
	Transmission Type	TF
	Number Of Forward Gears	3
	Number Of Reverse Gears	3
Standard Blade		
	Width	13.1 ft in
	Height	41.4 in

Compare similar models

☐

[Komatsu D65A-7](#)

Operating Weight

35692.9 lb

☐

[Komatsu D60PL-6](#)

Operating Weight

35714.9 lb

☐

[Case 1650K LGP](#)

Operating Weight

35700 lb

Compare

Find Komatsu D65A-8 Crawler Tractor for Sale



- [See Komatsu Crawler Tractor for sale rbauction.com](#)
- [See Komatsu Crawler Tractor for sale ironplanet.com](#)
- [See Komatsu Crawler Tractor for sale mascus.com](#)

Need help? Contact Us

English

Company

+

Popular Searches

+

Looking for equipment or trucks?

Ritchie Bros. sells more new and used industrial equipment and trucks than any other company in the world.

Equipment for sale on rbauction.com

Equipment for sale on ironplanet.com

Equipment for sale on mascus.com

Sell your equipment

© 2007-2018 RitchieSpecs Equipment Specifications Ritchie Bros. Auctioneers © [Privacy Statement](#)| [Terms of Use](#)
OEM specifications are provided for base units. Actual equipment may vary with options.