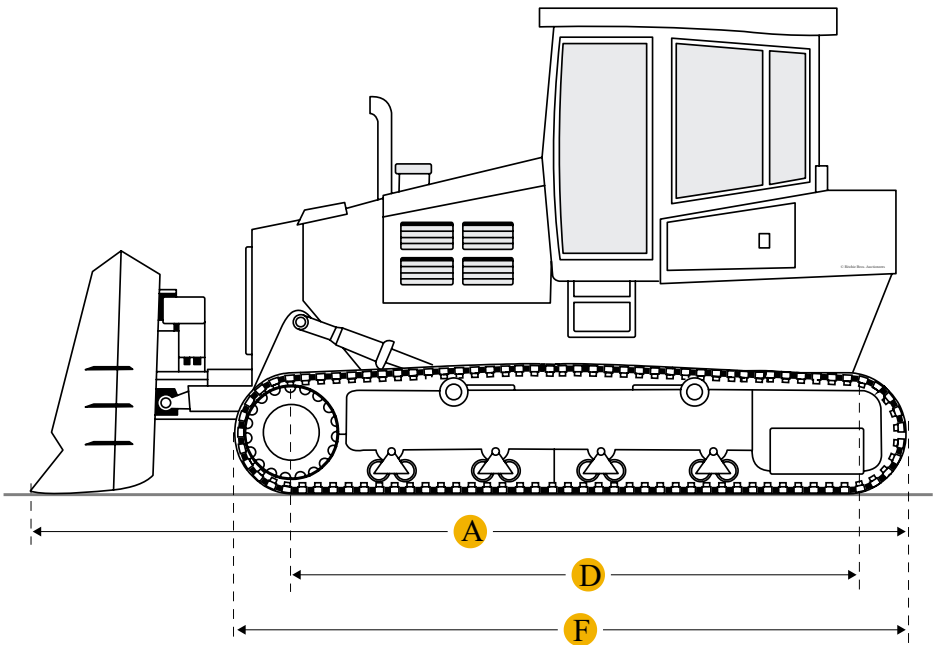
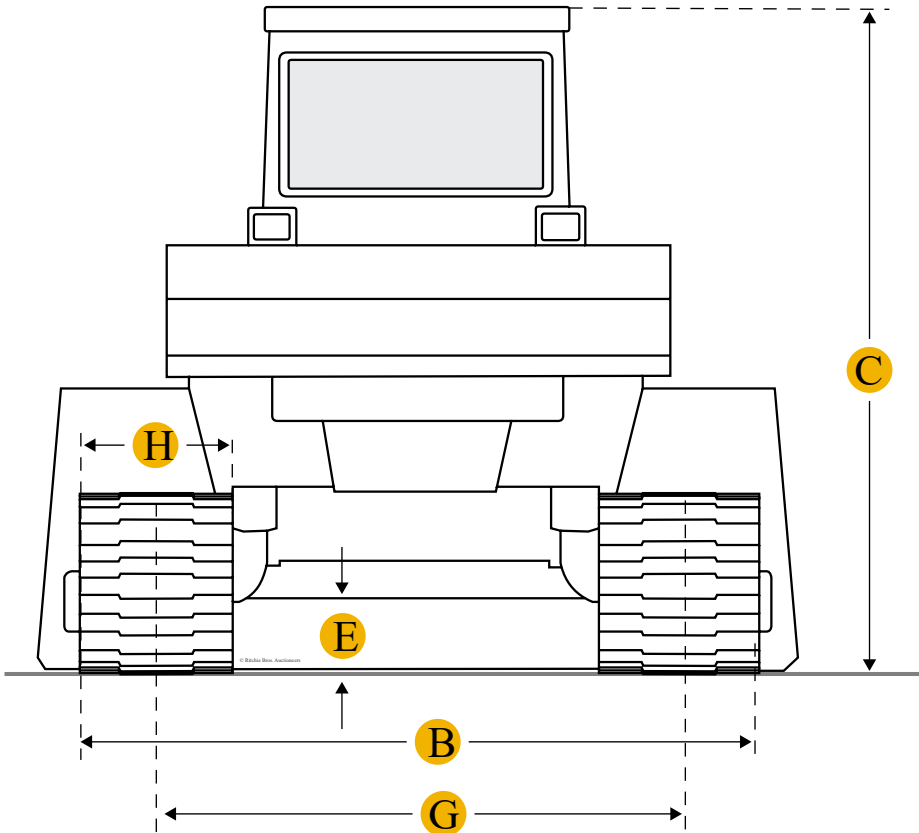


Komatsu D65A-7 Crawler Tractor



Units

Imperial

Metric

Dimensions

Dimensions

A	Length W/ Blade	17 ft in
B	Width Over Tracks	7.85 ft in
C	Height To Top Of Cab	9.9 ft in
D	Length Of Track On Ground	7.98 ft in

E	Ground Clearance	1.32 ft in
F	Length W/O Blade	13.36 ft in
Undercarriage		
G	Track Gauge	6.17 ft in
H	Standard Shoe Size	20.08 in
	Number Of Shoes Per Side	37
	Number Of Carrier Rollers Per Side	2
	Ground Pressure	7.4 psi
	Number Of Track Rollers Per Side	6
	Track Pitch	8 in


---

## Specifications

Engine		
	Number Of Cylinders	6
	Engine Make	2238
	Engine Model	NH220-CI
	Gross Power	160 hp
	Power Measured @	1850 rpm
	Displacement	742.7 cu in
Operational		
	Operating Weight	35692.9 lb
	Fuel Capacity	84.6 gal
	Cooling System Fluid Capacity	16.7 gal
Transmission		
	Transmission Type	K-C
	Number Of Forward Gears	3
	Number Of Reverse Gears	3
	Max Speed - Forward	6.6 mph

Max Speed - Reverse	8.5 mph
Standard Blade	
Width	13.1 ft in
Height	41.4 in
Cutting Depth	20.9 in

## Find Komatsu D65A-7 Crawler Tractor for Sale

- 
- [See Komatsu Crawler Tractor for sale rbauction.com](#)
- [See Komatsu Crawler Tractor for sale ironplanet.com](#)
- [See Komatsu Crawler Tractor for sale mascus.com](#)

Need help? Contact Us

 English

- Company

+
- Popular Searches

+

### Looking for equipment or trucks?

Ritchie Bros. sells more new and used industrial equipment and trucks than any other company in the world.

Equipment for sale on rbauction.com

Equipment for sale on ironplanet.com

Equipment for sale on mascus.com

Sell your equipment

© 2007-2018 RitchieSpecs Equipment Specifications Ritchie Bros. Auctioneers © [Privacy Statement](#)| [Terms of Use](#)  
OEM specifications are provided for base units. Actual equipment may vary with options.