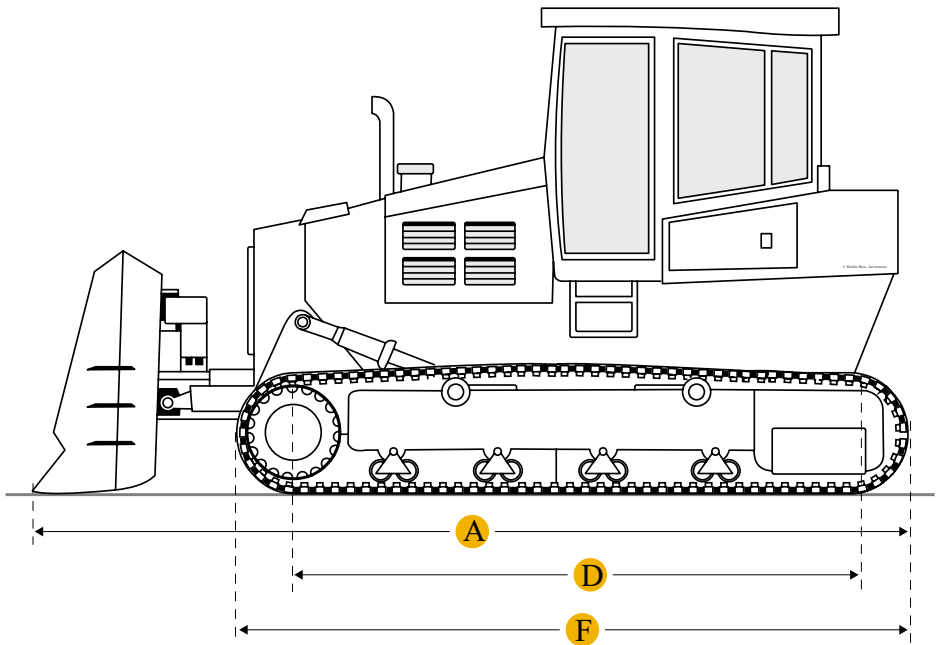
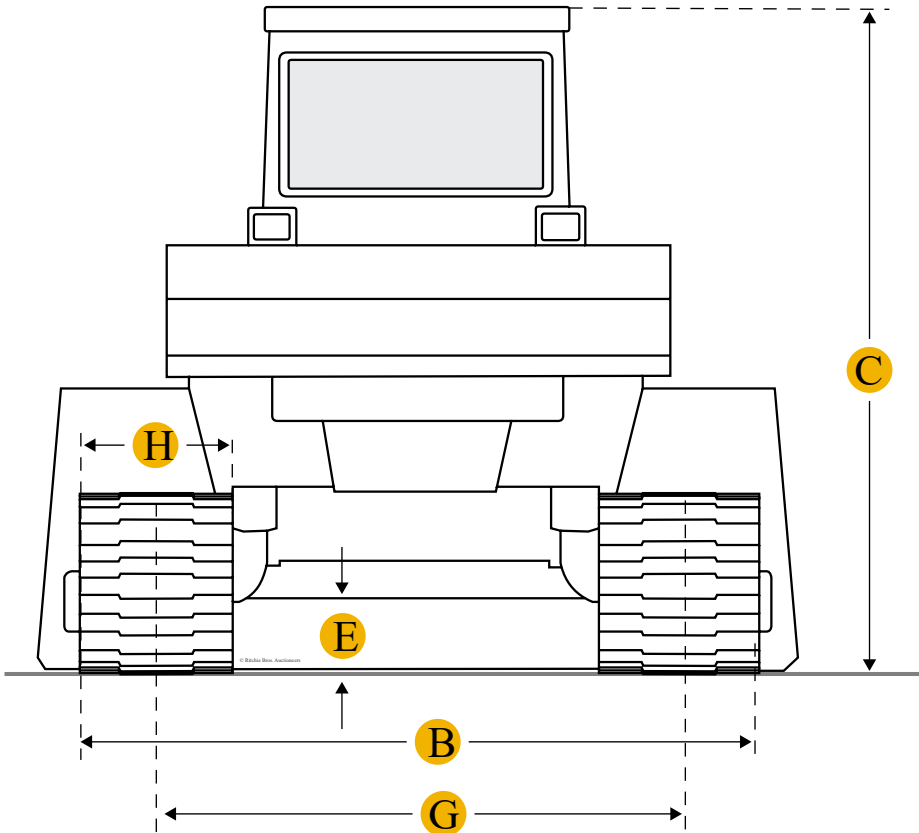


Komatsu D60A-7 Crawler Tractor



Units

Imperial

Metric

Dimensions

Dimensions

B	Width Over Tracks	7.85 ft in
C	Height To Top Of Cab	9.9 ft in
D	Length Of Track On Ground	7.98 ft in
F	Length W/O Blade	16.85 ft in

Undercarriage		
G	Track Gauge	6.17 ft in
H	Standard Shoe Size	20.08 in
	Number Of Track Rollers Per Side	6
	Ground Pressure	7.4 psi

---

## Specifications

Engine		
	Engine Make	2347
	Engine Model	NH220-CI
	Gross Power	155 hp
	Displacement	743 cu in
Operational		
	Operating Weight	28570 lb
	Fuel Capacity	84.6 gal
	Cooling System Fluid Capacity	14.6 gal
Transmission		
	Transmission Type	helical gear constant mesh type
	Number Of Forward Gears	5
	Number Of Reverse Gears	4
	Max Speed - Forward	6.9 mph
	Max Speed - Reverse	6.1 mph
Standard Blade		
	Width	13.1 ft in
	Height	41.4 in
	Cutting Depth	20.9 in

---

# Find Komatsu D60A-7 Crawler Tractor for Sale

- [See Komatsu Crawler Tractor for sale rbauction.com](#)
- [See Komatsu Crawler Tractor for sale ironplanet.com](#)
- [See Komatsu Crawler Tractor for sale mascus.com](#)

Need help? Contact Us

🌐 English

Company +

Popular Searches +

## Looking for equipment or trucks?

Ritchie Bros. sells more new and used industrial equipment and trucks than any other company in the world.

Equipment for sale on rbauction.com

Equipment for sale on ironplanet.com

Equipment for sale on mascus.com

Sell your equipment

© 2007-2018 RitchieSpecs Equipment Specifications Ritchie Bros. Auctioneers © [Privacy Statement](#)| [Terms of Use](#)  
OEM specifications are provided for base units. Actual equipment may vary with options.