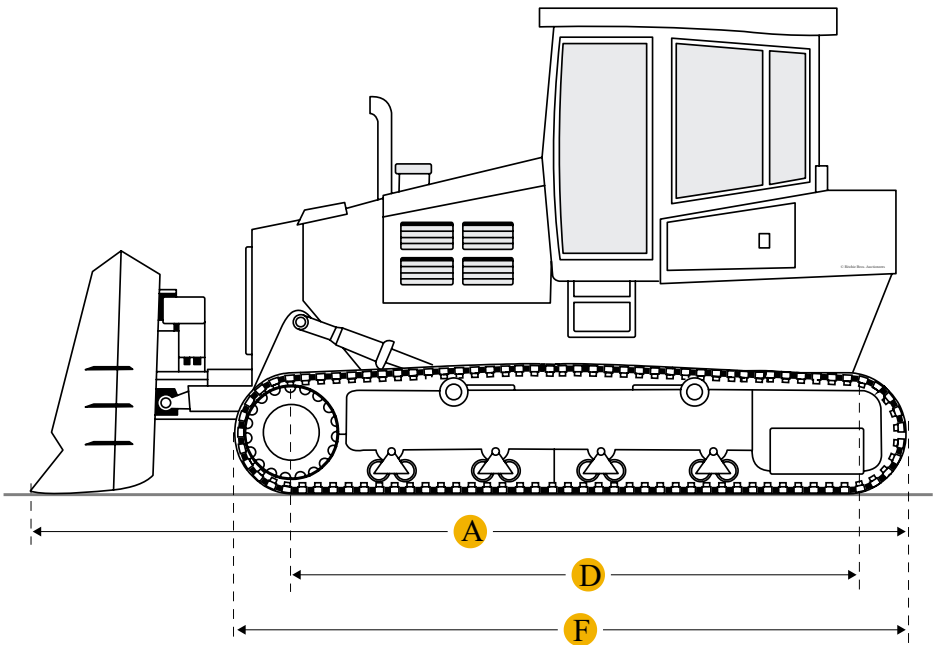
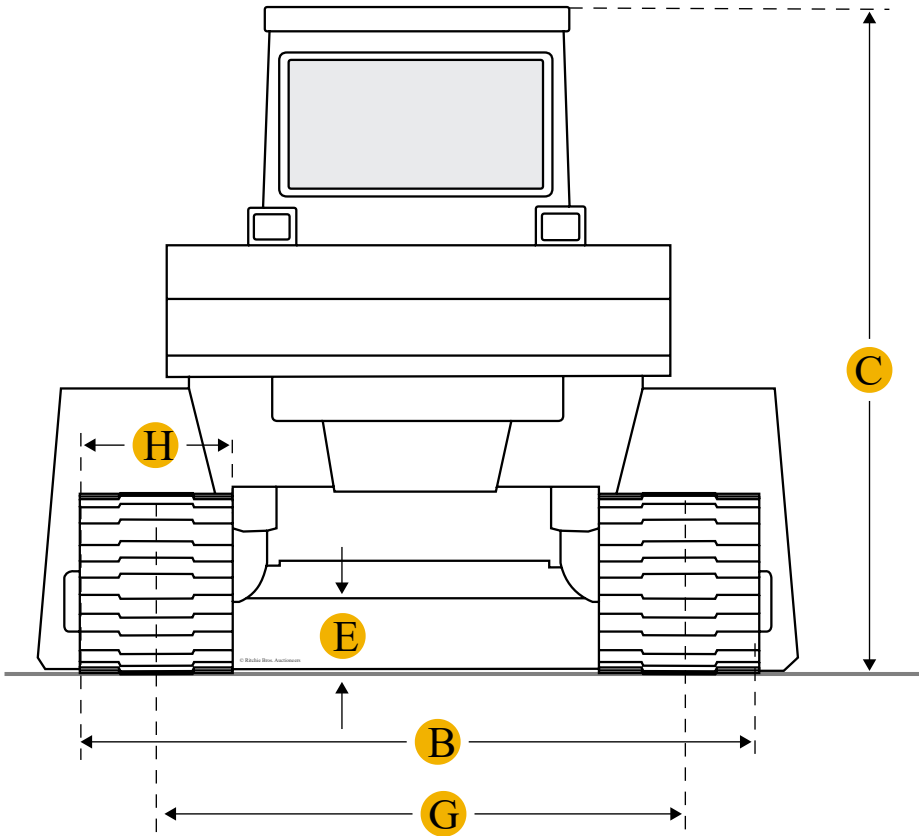


Komatsu D575A-3SD Crawler Tractor



Units

Imperial

Metric

Dimensions

Dimensions

A	Length W/ Blade	38.46 ft in
B	Width Over Tracks	10.58 ft in
C	Height To Top Of Cab	16 ft in
E	Ground Clearance	2.42 ft in

Undercarriage

H	Standard Shoe Size	34 in
	Number Of Track Rollers Per Side	8
	Number Of Shoes Per Side	49
	Ground Pressure	23 psi
	Ground Contact Area	14623 in2

Specifications

Engine

	Number Of Cylinders	12
	Engine Make	2238
	Engine Model	SA12V170E
	Net Power	1150 hp
	Power Measured @	1800 rpm
	Displacement	2825 cu in
	Aspiration	turbocharged, aftercooled

Operational

	Operating Weight	252600 lb
	Fuel Capacity	555 gal
	Cooling System Fluid Capacity	79 gal
	Engine Oil Capacity	52 gal
	Hydraulic Fluid Capacity	79 gal
	Final Drives Fluid Capacity	42 gal

Transmission

	Transmission Type	Komatsu TORQFLOW transmission
	Number Of Forward Gears	3
	Number Of Reverse Gears	3
	Max Speed - Forward	7.5 mph

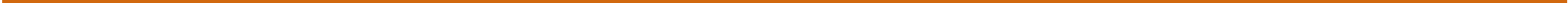
Max Speed - Reverse	8.3 mph
Hydraulic System	
Relief Valve Pressure	2990 psi
Pump Flow Capacity	332 gal/min
Standard Blade	
Width	24.3 ft in
Height	12 in
Cutting Depth	2.7 in

Find Komatsu D575A-3SD Crawler Tractor for Sale

[See Komatsu Crawler Tractor for sale rbauction.com](#)

[See Komatsu Crawler Tractor for sale ironplanet.com](#)

[See Komatsu Crawler Tractor for sale mascus.com](#)



Need help? [Contact Us](#)

 English

Company	+
Popular Searches	+

Looking for equipment or trucks?

Ritchie Bros. sells more new and used industrial equipment and trucks than any other company in the world.

[Equipment for sale on rbauction.com](#)

[Equipment for sale on ironplanet.com](#)

[Equipment for sale on mascus.com](#)

[Sell your equipment](#)

© 2007-2018 RitchieSpecs Equipment Specifications Ritchie Bros. Auctioneers © [Privacy Statement](#) | [Terms of Use](#)
OEM specifications are provided for base units. Actual equipment may vary with options.