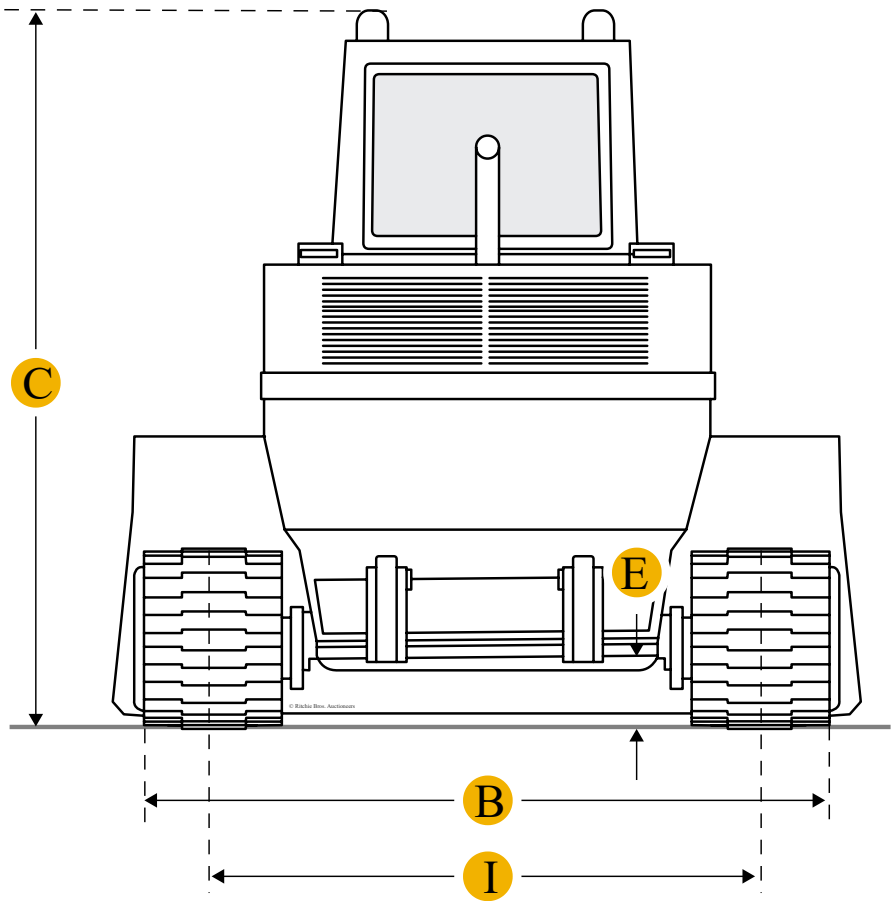
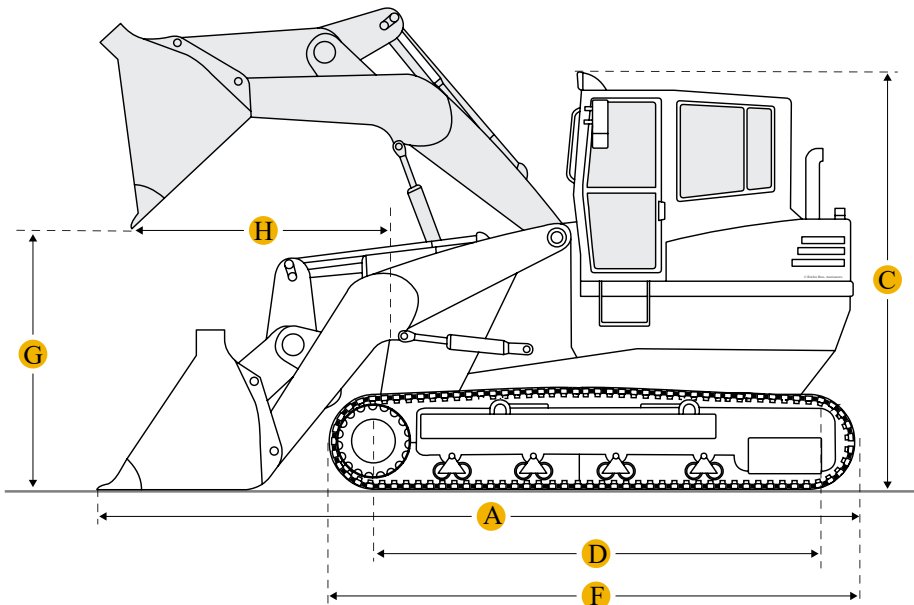
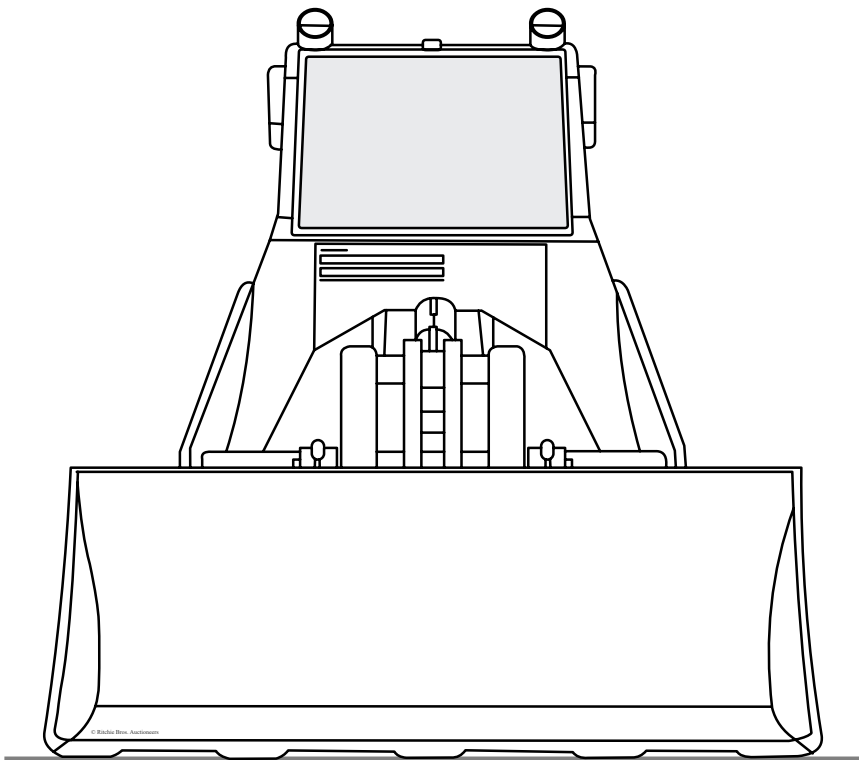


Komatsu D53S-15 Crawler Loader



Units

Imperial

Metric

Dimensions

Dimensions

A	Length With Bucket On Ground	16.8 ft in
B	Width To Outside Of Tracks	6.73 ft in

Undercarriage	
I Track Gauge	63 in
D Length Of Track On Ground	7.22 ft in
Ground Pressure	10.52 psi

Specifications

Engine	
Engine Make	2238
Engine Model	S4D120-11
Net Power	110 hp
Aspiration	turbocharged
Displacement	442 cu in
Operational	
Operating Weight	28660.1 lb
Bucket Capacity - Heaped	1.9 yd3
Max Speed	5.8 mph

Compare similar models



[Komatsu D50S-16](#)

Bucket Capacity - Heaped	1.9 yd3
---------------------------------	---------

Net Power	110 hp
------------------	--------

Operating Weight

28450 lb



[Komatsu D53S-16](#)

Bucket Capacity - Heaped	1.9 yd3
---------------------------------	---------

Net Power	110 hp
------------------	--------

Operating Weight


28781.4 lb



[Caterpillar 955K](#)

Bucket Capacity - Heaped	1.8 yd3
Net Power	115 hp
Operating Weight	28000 lb
Compare	

Find Komatsu D53S-15 Crawler Loader for Sale



[See Komatsu Crawler Loader for sale rbauction.com](#)
[See Komatsu Crawler Loader for sale ironplanet.com](#)
[See Komatsu Crawler Loader for sale mascus.com](#)

Need help? Contact Us

🌐 English

- Company

+
- Popular Searches

+

Looking for equipment or trucks?

Ritchie Bros. sells more new and used industrial equipment and trucks than any other company in the world.

- Equipment for sale on rbauction.com
- Equipment for sale on ironplanet.com
- Equipment for sale on mascus.com
- Sell your equipment

© 2007-2018 RitchieSpecs Equipment Specifications Ritchie Bros. Auctioneers © [Privacy Statement](#)[Terms of Use](#)
OEM specifications are provided for base units. Actual equipment may vary with options.