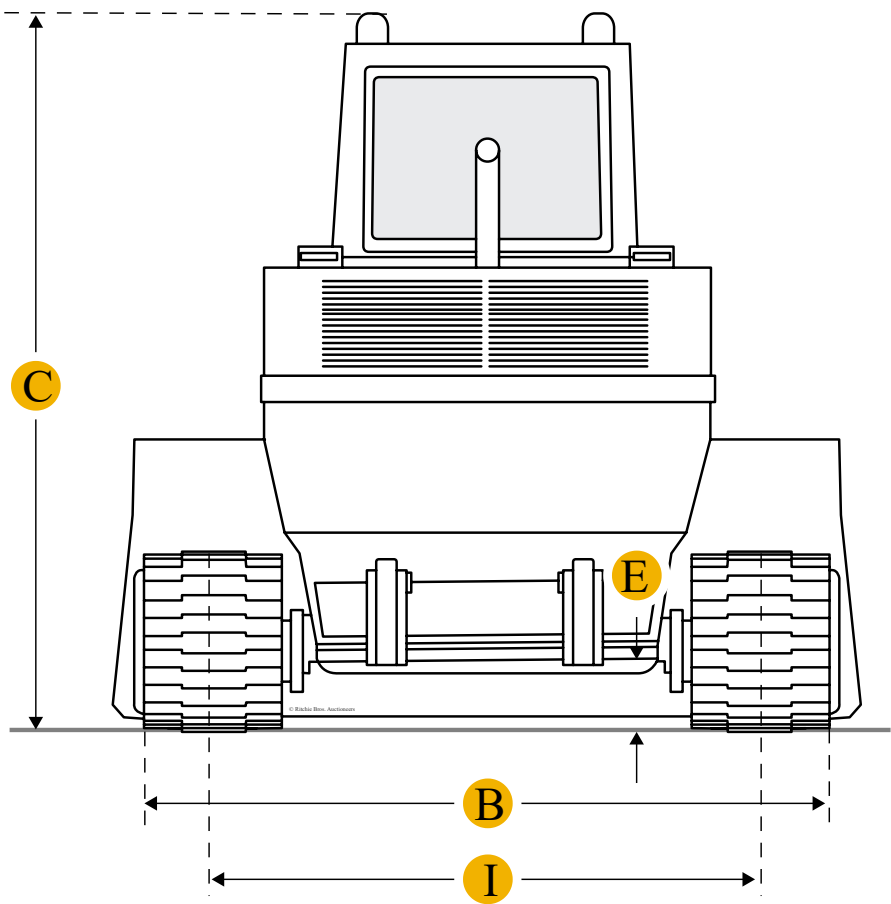
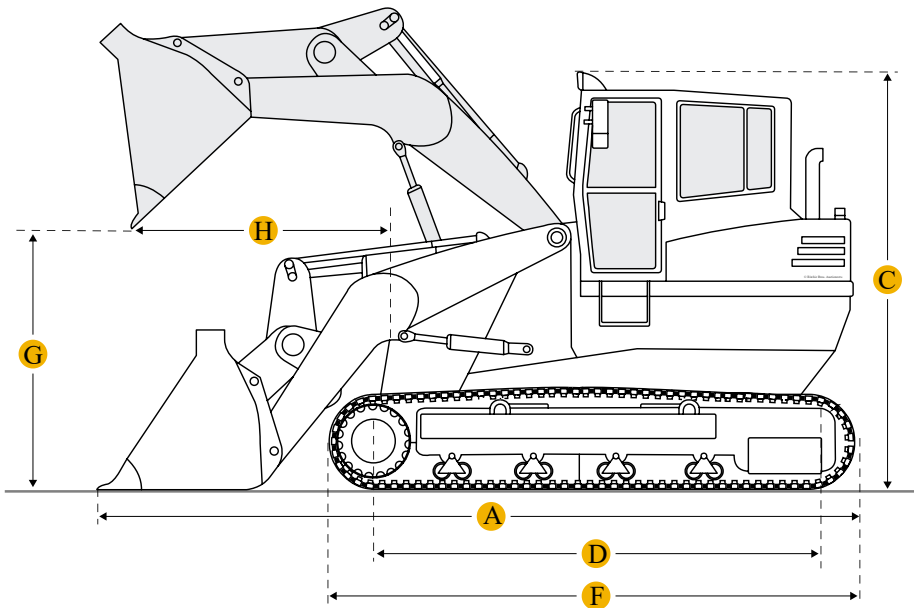
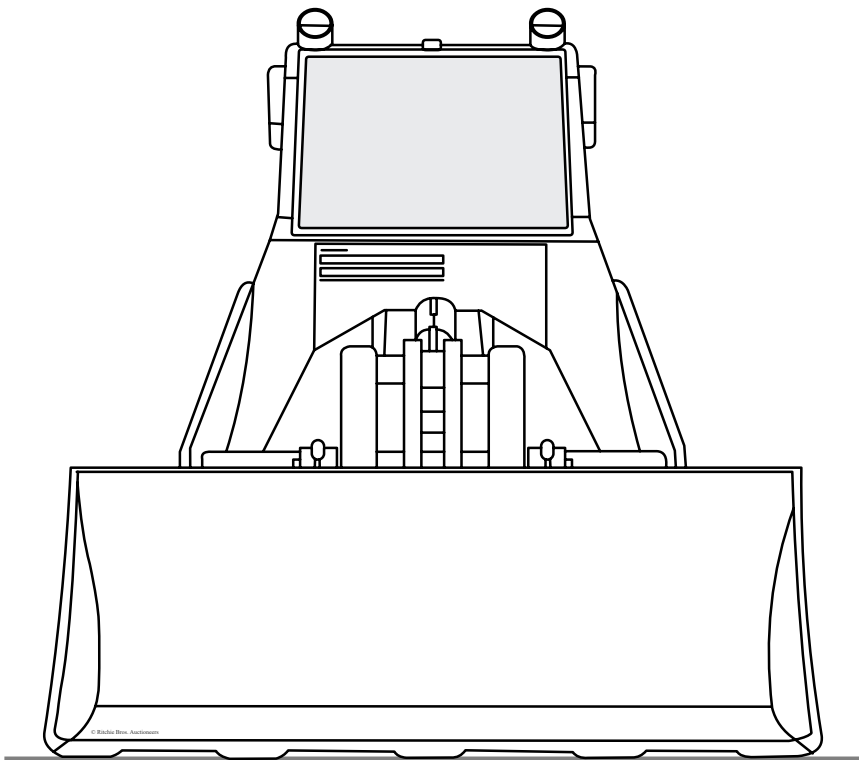


Komatsu D50S-15 Crawler Loader



Units

Imperial

Metric

Dimensions

Dimensions

A	Length With Bucket On Ground	16.8 ft in
B	Width To Outside Of Tracks	6.73 ft in

Undercarriage	
I Track Gauge	63 in
D Length Of Track On Ground	7.22 ft in
Ground Pressure	9.97 psi

Specifications

Engine	
Engine Make	2238
Engine Model	4D120-11
Net Power	90 hp
Displacement	442 cu in
Operational	
Operating Weight	27227.1 lb
Bucket Capacity - Heaped	1.8 yd3
Max Speed	3.5 mph

Compare similar models

<input type="checkbox"/>	Caterpillar 951C
Bucket Capacity - Heaped	1.8 yd3

Net Power	95 hp
------------------	-------

Operating Weight	28071.5 lb
-------------------------	------------

| ☐ | [Komatsu D45S](#) |
| **Bucket Capacity - Heaped** | 1.6 yd3 |


Net Power	90 hp
------------------	-------

Operating Weight	24118.6 lb
-------------------------	------------

| ☐ | [Komatsu D41S-3](#) |
| **Bucket Capacity - Heaped** | 1.6 yd3 |

Net Power	90 hp
Operating Weight	24339.1 lb
Compare	

Find Komatsu D50S-15 Crawler Loader for Sale

- 
- [See Komatsu Crawler Loader for sale rbauction.com](#)
- [See Komatsu Crawler Loader for sale ironplanet.com](#)
- [See Komatsu Crawler Loader for sale mascus.com](#)

Need help? Contact Us

 English

Company

+

Popular Searches

+

Looking for equipment or trucks?

Ritchie Bros. sells more new and used industrial equipment and trucks than any other company in the world.

Equipment for sale on rbauction.com

Equipment for sale on ironplanet.com

Equipment for sale on mascus.com

Sell your equipment

© 2007-2018 RitchieSpecs Equipment Specifications Ritchie Bros. Auctioneers © [Privacy Statement](#)| [Terms of Use](#)
OEM specifications are provided for base units. Actual equipment may vary with options.