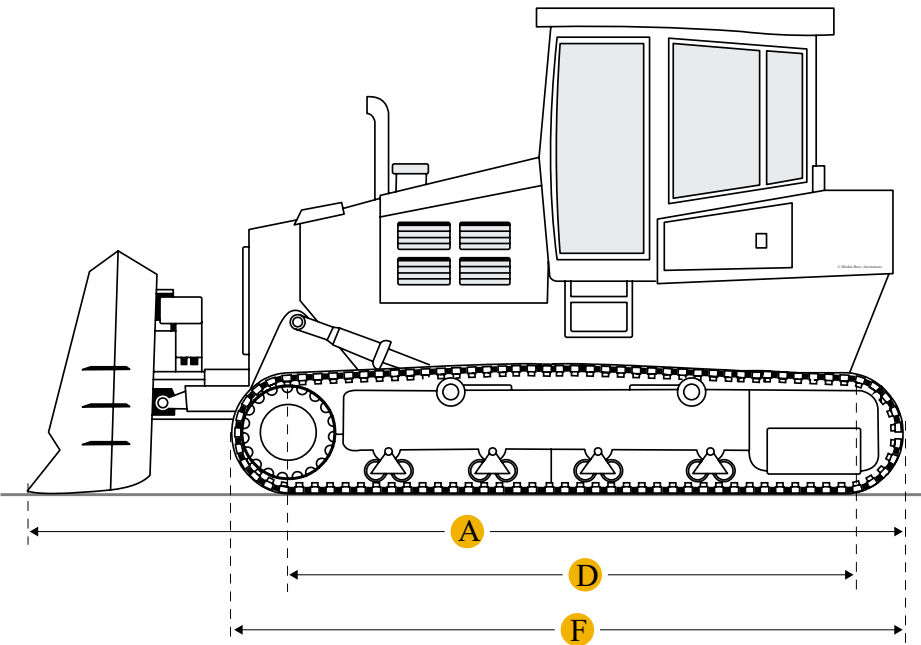
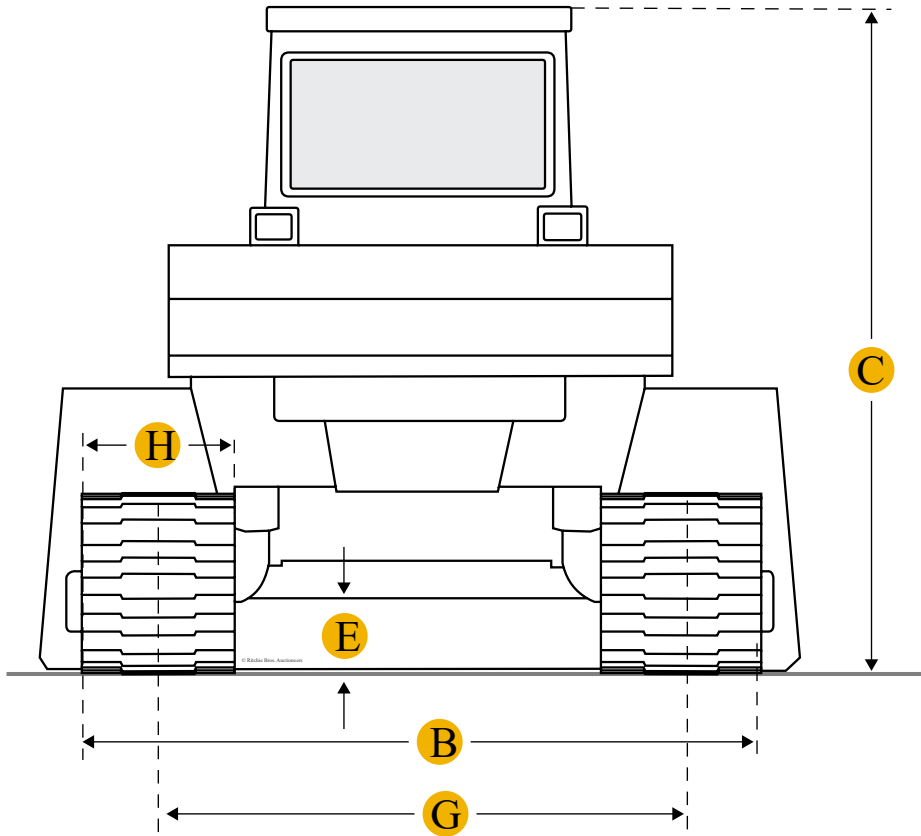
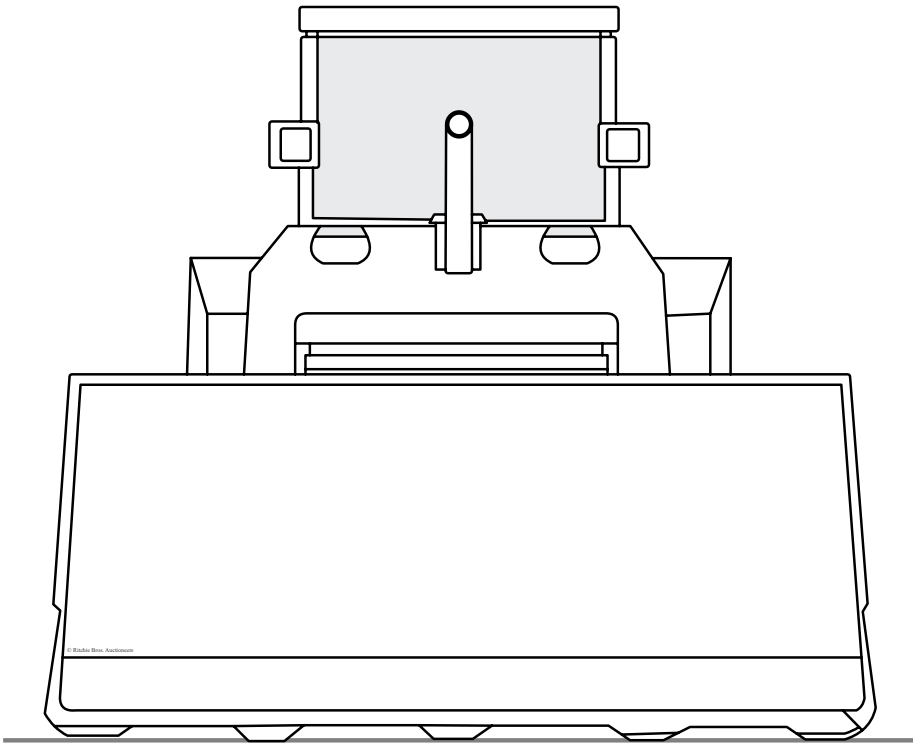


# Komatsu D50PL-16 Crawler Tractor



Units

Imperial

Metric

## Dimensions

### Dimensions

A	Length W/ Blade	16.21 ft in
B	Width Over Tracks	9.91 ft in
C	Height To Top Of Cab	9.55 ft in
D	Length Of Track On Ground	9.52 ft in

E	Ground Clearance	1.37 ft in
F	Length W/O Blade	12.93 ft in
Undercarriage		
G	Track Gauge	6.76 ft in
H	Standard Shoe Size	37.8 in
	Number Of Shoes Per Side	47
	Number Of Carrier Rollers Per Side	2
	Ground Pressure	2.84 psi
	Number Of Track Rollers Per Side	7
	Track Pitch	6.89 in

## Specifications

Engine		
	Number Of Cylinders	4
	Engine Make	2238
	Engine Model	SL4D130-1C
	Gross Power	118 hp
	Power Measured @	1900 rpm
	Displacement	518.4 cu in
Operational		
	Operating Weight	28836.5 lb
Transmission		
	Transmission Type	DD
	Number Of Forward Gears	4
	Number Of Reverse Gears	3
Standard Blade		
	Width	12.1 ft in
	Height	37.1 in

Capacity	4.2 yd3
Cutting Depth	17.4 in

## Find Komatsu D50PL-16 Crawler Tractor for Sale

- [See Komatsu Crawler Tractor for sale rbauction.com](#)
- [See Komatsu Crawler Tractor for sale ironplanet.com](#)
- [See Komatsu Crawler Tractor for sale mascus.com](#)

Need help? Contact Us

 English

- Company

+
- Popular Searches

+

### Looking for equipment or trucks?

Ritchie Bros. sells more new and used industrial equipment and trucks than any other company in the world.

Equipment for sale on rbauction.com

Equipment for sale on ironplanet.com

Equipment for sale on mascus.com

Sell your equipment

© 2007-2018 RitchieSpecs Equipment Specifications Ritchie Bros. Auctioneers © [Privacy Statement](#)[Terms of Use](#)  
OEM specifications are provided for base units. Actual equipment may vary with options.