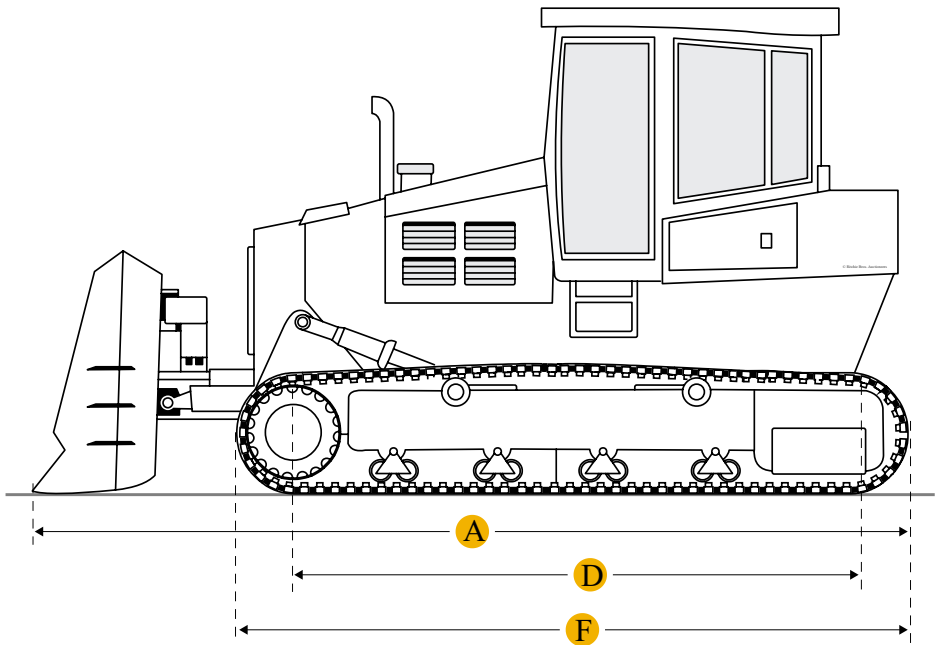
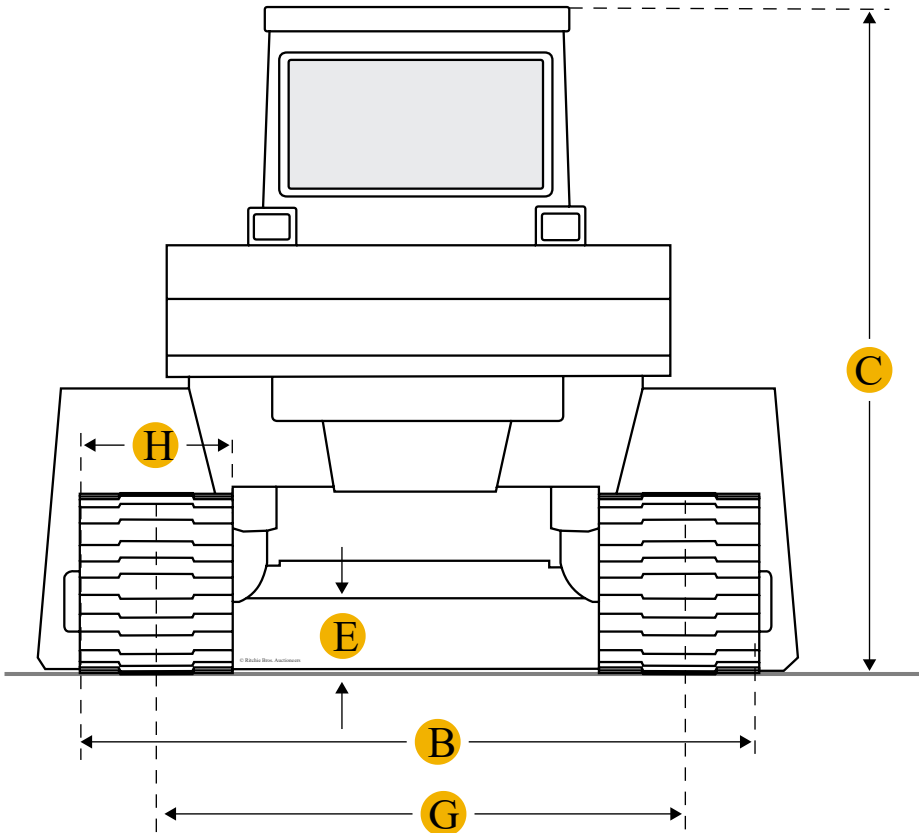
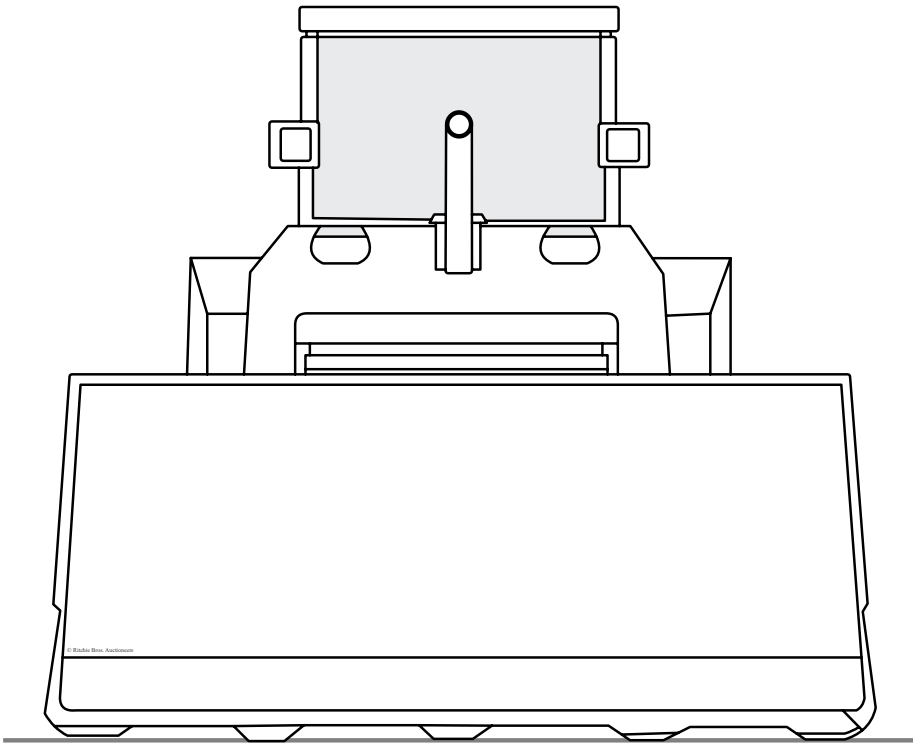


Komatsu D50P-18A Crawler Tractor



Units

Imperial

Metric

Dimensions

Dimensions

A	Length W/ Blade	18.07 ft in
B	Width Over Tracks	9.85 ft in
C	Height To Top Of Cab	9.72 ft in
D	Length Of Track On Ground	10.26 ft in

E	Ground Clearance	1.32 ft in
F	Length W/O Blade	13.52 ft in
Undercarriage		
G	Track Gauge	7.03 ft in
H	Standard Shoe Size	33.86 in
	Number Of Carrier Rollers Per Side	2
	Number Of Track Rollers Per Side	8
	Track Pitch	6.89 in
	Number Of Shoes Per Side	49

---

## Specifications

Engine		
	Number Of Cylinders	6
	Engine Make	2238
	Engine Model	6D125-1
	Gross Power	130 hp
	Power Measured @	1750 rpm
	Displacement	673.8 cu in
Operational		
	Operating Weight	34811 lb
Transmission		
	Transmission Type	DD
	Number Of Forward Gears	5
	Number Of Reverse Gears	4
Standard Blade		
	Width	12.7 ft in
	Height	40.6 in

---

# Compare similar models

☐

[John Deere 750K](#)

Operating Weight

34566.3 lb

☐

[Caterpillar D5H LGP Series II](#)

Operating Weight

34855.1 lb

☐

[Komatsu D65A-6](#)

Operating Weight

34678.8 lb

Compare

## Find Komatsu D50P-18A Crawler Tractor for Sale

- [See Komatsu Crawler Tractor for sale rbauction.com](#)
- [See Komatsu Crawler Tractor for sale ironplanet.com](#)
- [See Komatsu Crawler Tractor for sale mascus.com](#)

Need help? Contact Us

 English

Company

+

Popular Searches

+

### Looking for equipment or trucks?

Ritchie Bros. sells more new and used industrial equipment and trucks than any other company in the world.

Equipment for sale on rbauction.com

Equipment for sale on ironplanet.com

Equipment for sale on mascus.com

Sell your equipment

© 2007-2018 RitchieSpecs Equipment Specifications Ritchie Bros. Auctioneers © [Privacy Statement](#)| [Terms of Use](#)  
OEM specifications are provided for base units. Actual equipment may vary with options.