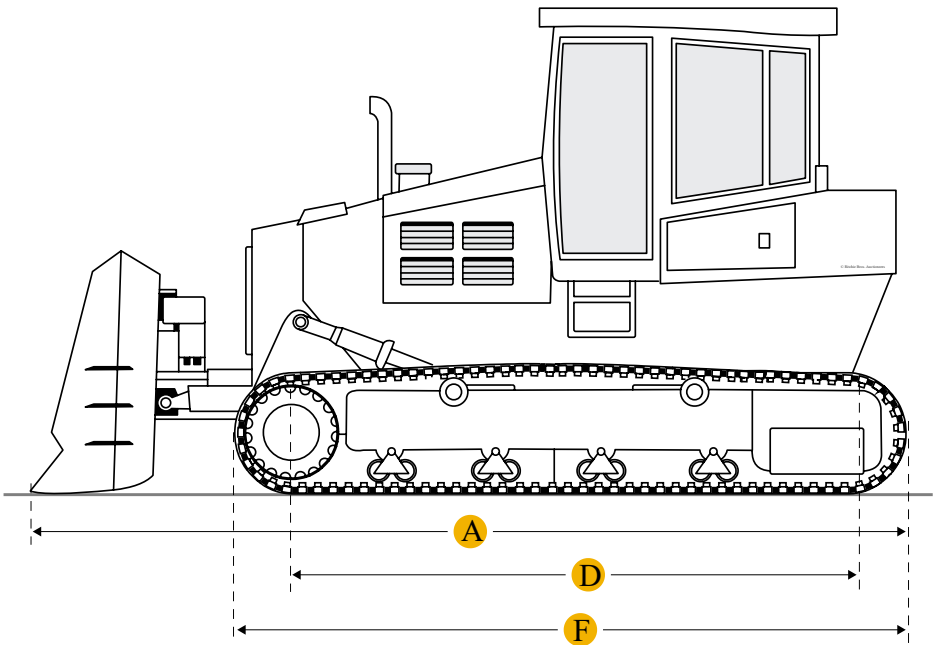
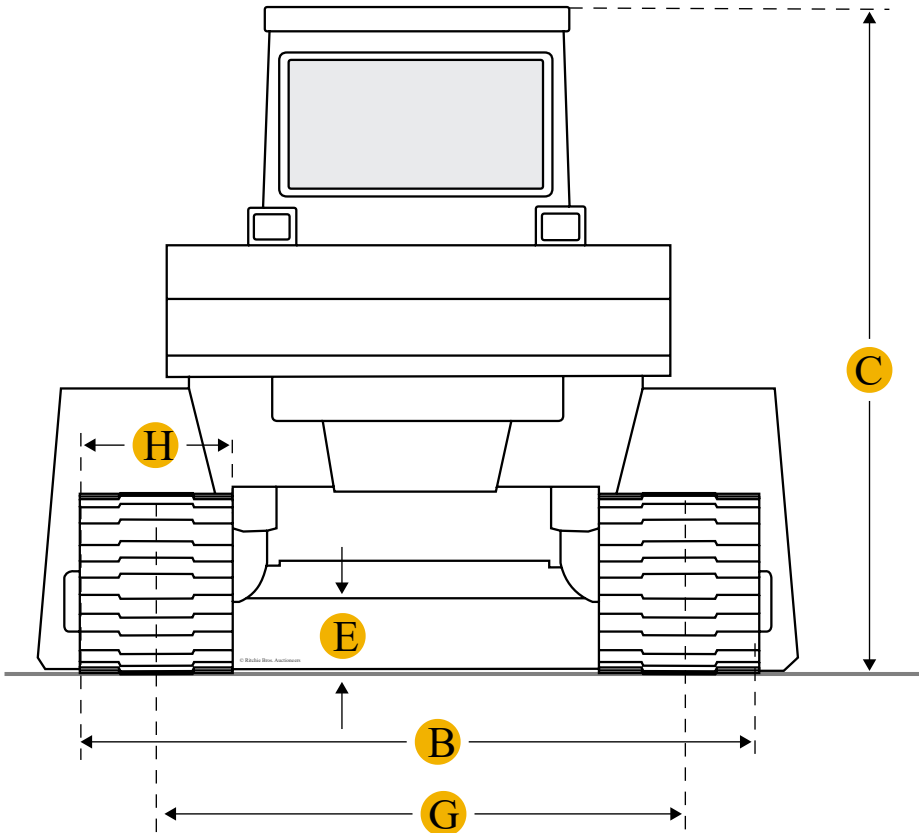
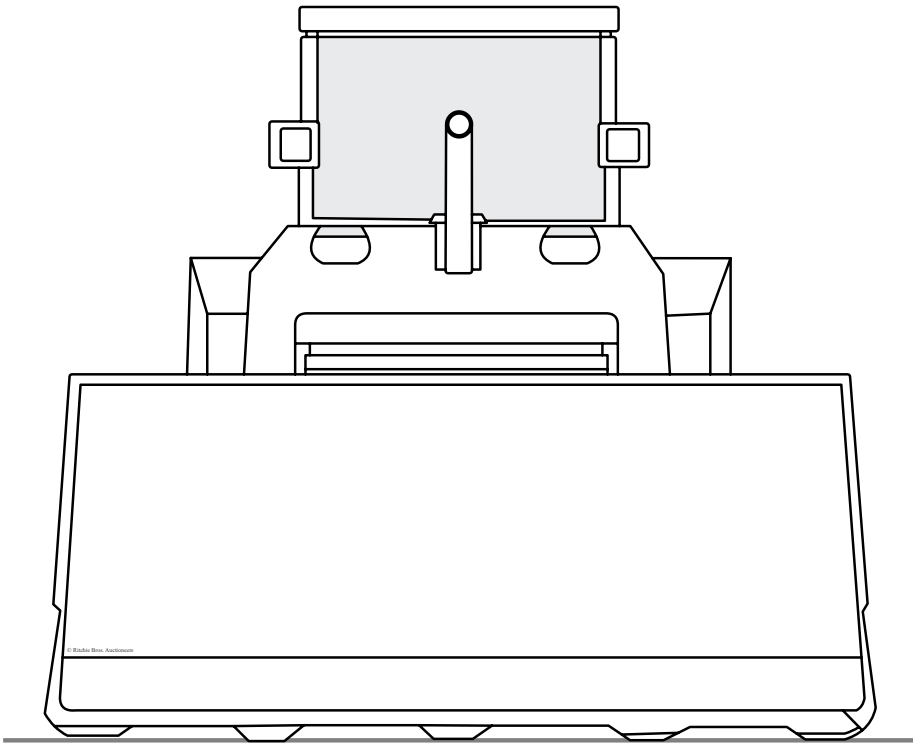


## Komatsu D50P-16 Crawler Tractor



Units

Imperial

Metric

### Dimensions

#### Dimensions

A	Length W/ Blade	16.28 ft in
B	Width Over Tracks	9.59 ft in
C	Height To Top Of Cab	9.59 ft in
D	Length Of Track On Ground	9.52 ft in

E	Ground Clearance	1.32 ft in
F	Length W/O Blade	13 ft in
Undercarriage		
G	Track Gauge	6.76 ft in
H	Standard Shoe Size	33.86 in
	Number Of Shoes Per Side	47
	Number Of Carrier Rollers Per Side	2
	Ground Pressure	3.27 psi
	Number Of Track Rollers Per Side	7
	Track Pitch	6.89 in

---

## Specifications

Engine		
	Number Of Cylinders	4
	Engine Make	2238
	Engine Model	SL4D130-1
	Gross Power	118 hp
	Power Measured @	1900 rpm
	Displacement	518.4 cu in
Operational		
	Operating Weight	30027 lb
Transmission		
	Transmission Type	DD
	Number Of Forward Gears	4
	Number Of Reverse Gears	3
Standard Blade		
	Width	11.6 ft in
	Height	37.6 in

Capacity	4.4 yd3
Cutting Depth	18.4 in

## Find Komatsu D50P-16 Crawler Tractor for Sale



[See Komatsu Crawler Tractor for sale rbauction.com](#)

[See Komatsu Crawler Tractor for sale ironplanet.com](#)

[See Komatsu Crawler Tractor for sale mascus.com](#)

Need help? [Contact Us](#)

 English

Company +

Popular Searches +

### Looking for equipment or trucks?

Ritchie Bros. sells more new and used industrial equipment and trucks than any other company in the world.

Equipment for sale on [rbauction.com](#)

Equipment for sale on [ironplanet.com](#)

Equipment for sale on [mascus.com](#)

[Sell your equipment](#)

© 2007-2018 RitchieSpecs Equipment Specifications Ritchie Bros. Auctioneers © [Privacy Statement](#)| [Terms of Use](#)  
OEM specifications are provided for base units. Actual equipment may vary with options.