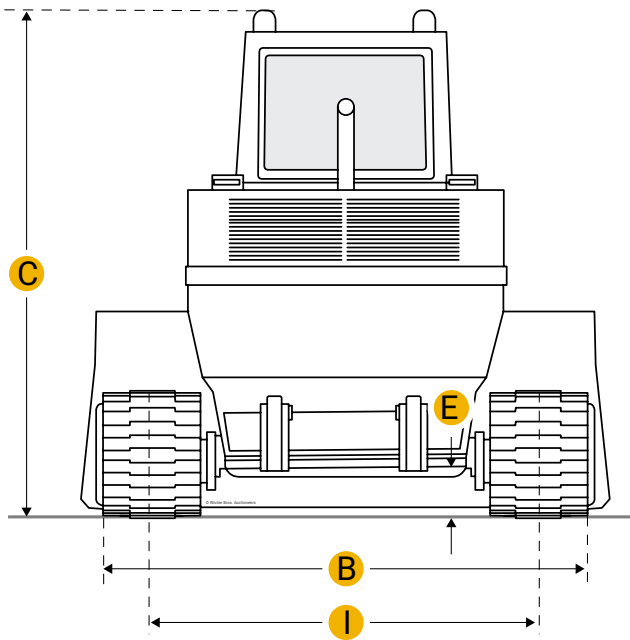
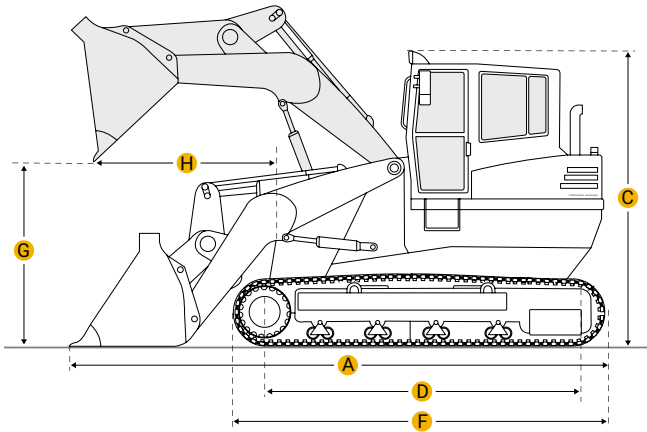
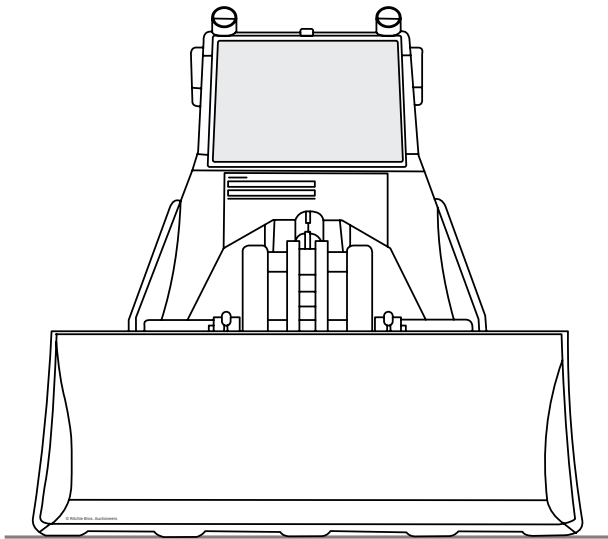


[Home](#)

Komatsu D45S Crawler Loader



Units

Imperial

Metric

Dimensions

Dimensions

A	Length With Bucket On Ground	16.11 ft in
B	Width To Outside Of Tracks	6.39 ft in
G	Clearance At Full Height And Dump	8.54 ft in

H	Reach At Dump Height	3.38 ft in
Undercarriage		
I	Track Gauge	60.63 in
D	Length Of Track On Ground	6.76 ft in
	Number Of Track Rollers Per Side	5
	Track Shoe Width	15.75 in
	Ground Pressure	9.39 psi

Specifications

Engine		
	Engine Make	2238
	Engine Model	S4D105
	Net Power	90 hp
	Displacement	264 cu in
Operational		
	Operating Weight	24118.6 lb
	Fuel Capacity	55.5 gal
	Cooling System Fluid Capacity	11.4 gal
	Static Tipping Load	15700 lb
	Breakout Force - Std Bucket	13230 lb
	Bucket Capacity - Heaped	1.6 yd3
	Max Speed	5.1 mph

Compare similar models

<input type="checkbox"/>	Komatsu D41S-3	
	Bucket Capacity - Heaped	1.6 yd3

	Net Power	90 hp
--	-----------	-------

Operating Weight	24339.1 lb
<input type="checkbox"/> John Deere 605C	
Bucket Capacity - Heaped	1.7 yd3
Net Power	99 hp
Operating Weight	23600 lb
<input type="checkbox"/> Caterpillar 939C	
Bucket Capacity - Heaped	1.5 yd3
Net Power	90 hp
Operating Weight	20908 lb
Compare	

Find {{brand}} {{model}} {{category}} for Sale

[See {{brand}} {{category}} for sale rbauktion.com](#)
[See {{brand}} {{category}} for sale ironplanet.com](#)
[See {{brand}} {{category}} for sale mascus.com](#)

Company



Popular Searches



Looking for equipment or trucks?

Ritchie Bros. sells more new and used industrial equipment and trucks than any other company in the world.

Equipment for sale on [rbauction.com](#)

Equipment for sale on [ironplanet.com](#)

Equipment for sale on [mascus.com](#)

[Sell your equipment](#)