



Examples: 'Bobcat Skid Steers', 'Komatsu Dealers', 'Groff Tractor', 'Cat 316', 'Toda

Search

[CATEGORIES](#) → [CRAWLER DOZERS](#) → [KOMATSU D41P-5A](#)

Komatsu D41P-5A Crawler Dozer

CATEGORY: CRAWLER DOZERS →

MANUFACTURER: KOMATSU →

MODEL: D41P-5A →

The Komatsu D41P-5A Crawler Dozer is a reliable and versatile machine designed for efficient and powerful performance on the job site. With a Gross Power of 127.4 hp and an Operating Weight of 24,912.3 lbs, this bulldozer offers exceptional productivity. Its dimensions, such as a Ground Clearance of 1.5 ft and Width Over Tracks of 8.9 ft, contribute to its maneuverability and stability during operations. Equipped with a 6-cylinder 6D105-1 Engine and a transmission with 3 forward and reverse gears, the D41P-5A is a robust machine for various earthmoving tasks.

[See all Komatsu D41P-5As for sale](#)

General Specifications

Dimensions

Ground Clearance	2 ft (0 m)
Height - Top of Cab	9 ft (3 m)
Length of Track on Ground	9 ft (3 m)



Length w/o Blade	12 ft (4 m)
Width Over Tracks	9 ft (3 m)

Engine

Displacement	396 cu in (6,491 cu cm)
Engine Model	6D105-1
Gross Power	127 hp (95 kw)
Number of Cylinders	6
Power Measured @	2350 rpm

Operating Specifications

Operating Weight	24,912 lbs (11,300 kg)
------------------	------------------------

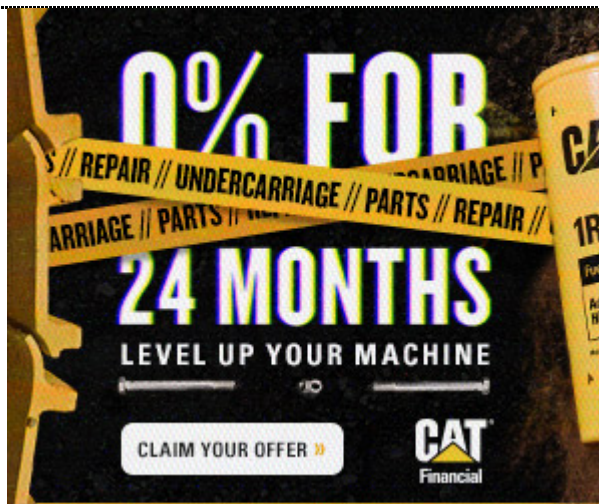
Standard Blade

Height	36 in (91 cm)
Width	11 ft (3 m)

Transmission

Number of Forward Gears	3
Number of Reverse Gears	3
Transmission Type	HS

Number of Carrier Rollers per Side	1
Number of Shoes per Side	43
Number of Track Rollers per Side	7
Standard Shoe Size	28 in (72 cm)
Track Gauge	7 ft (2 m)
Track Pitch	7 in (18 cm)



Our Main Office

Construction Equipment Guide
470 Maryland Drive
Fort Washington, PA 19034
800-523-2200

About Us

Construction Equipment Guide covers the nation with its four regional newspapers, offering construction and industry news and information along with new and used construction equipment for sale from dealers in your area. Now we extend those services and information to the internet. Making it as easy as possible to find the news and equipment that you need and want.

Contents Copyrighted 2025, by Construction Equipment Guide, which is a Registered Trademark, registered in the U.S. Patent Office. Registration number 0957323. All rights reserved, nothing may be reprinted or reproduced (including framing) in whole or part without written permission from the publisher. All editorial material, photographs, drawings, letters, and other material will be treated as unconditionally assigned for publication and copyright purposes and are subject to Construction Equipment Guide's unrestricted right to edit and comment editorially. Contributor articles do not necessarily reflect the policy or opinions of this publication.

[Read our privacy policy here.](#)

Mastodon

33.51940 \\ 36.28880 \\ Damascus \\ DI \\ SY \\ Unknown