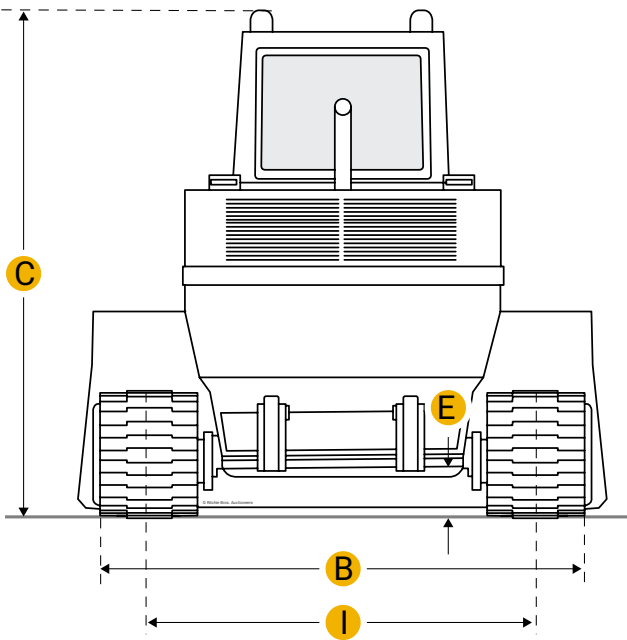
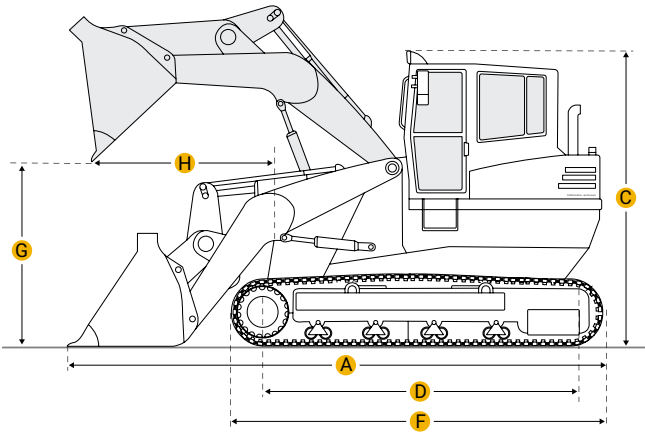
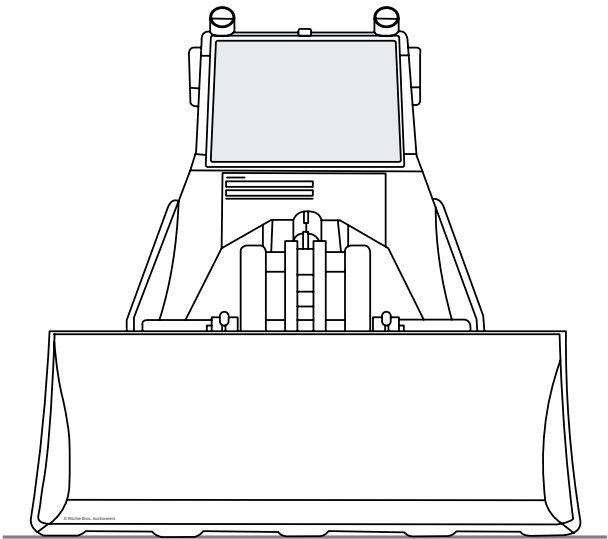


[Home](#)

Komatsu D31S-17 Crawler Loader



Units

Imperial

Metric

Dimensions

Dimensions

A	Length With Bucket On Ground	13.6 ft in
B	Width To Outside Of Tracks	5.88 ft in
C	Height To Top Of Cab	8.72 ft in

G	Clearance At Full Height And Dump	8.34 ft in
H	Reach At Dump Height	2.73 ft in
Undercarriage		
I	Track Gauge	57.09 in
D	Length Of Track On Ground	6.17 ft in
	Number Of Track Rollers Per Side	5
	Track Shoe Width	13 in
	Ground Pressure	7.68 psi

Specifications

Engine		
	Engine Make	2238
	Engine Model	4D105-5
	Net Power	66 hp
	Displacement	264 cu in
Operational		
	Operating Weight	14771 lb
	Fuel Capacity	30.4 gal
	Cooling System Fluid Capacity	5.9 gal
	Static Tipping Load	9390 lb
	Breakout Force - Std Bucket	14110 lb
	Bucket Capacity - Heaped	1.1 yd3
	Max Speed	4.1 mph

Compare similar models

<input type="checkbox"/>	Komatsu D31S-20	
	Bucket Capacity - Heaped	1.1 yd3

69.8 hp

Net Power

Operating Weight14947.4 lb

☐ [Komatsu D31Q-17](#)

Bucket Capacity - Heaped1.1 yd3

Net Power66 hp

Operating Weight15430 lb

☐ [Komatsu D31S-16](#)

Bucket Capacity - Heaped1.1 yd3

Net Power63 hp

Operating Weight14726.9 lb

Compare

Find {{brand}} {{model}} {{category}} for Sale

[See {{brand}}_{{category}} for sale rbaction.com](#)
[See {{brand}}_{{category}} for sale ironplanet.com](#)
[See {{brand}}_{{category}} for sale mascus.com](#)

Company



Popular Searches



Looking for equipment or trucks?

Ritchie Bros. sells more new and used industrial equipment and trucks than any other company in the world.

Equipment for sale on [rbauction.com](#)

Equipment for sale on [ironplanet.com](#)

Equipment for sale on [mascus.com](#)

[Sell your equipment](#)