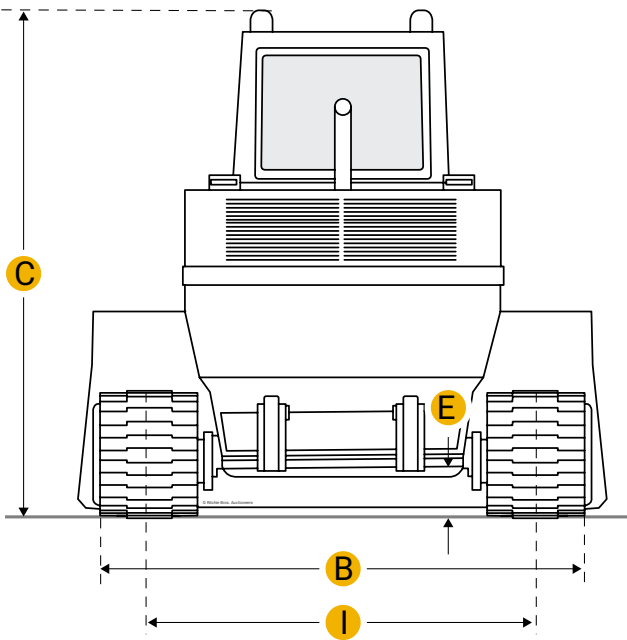
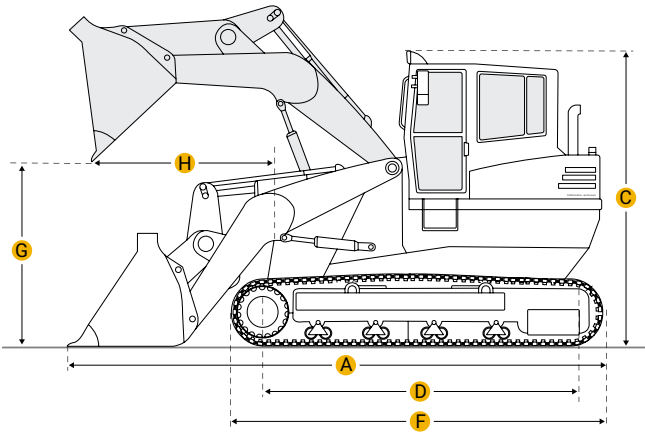
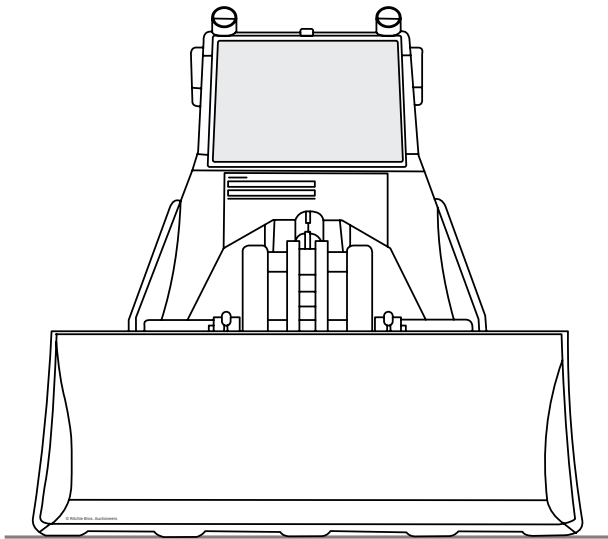


[Home](#)

Komatsu D31S-16 Crawler Loader



Units

Imperial

Metric

Dimensions

Dimensions

A	Length With Bucket On Ground	13.64 ft in
B	Width To Outside Of Tracks	5.88 ft in
G	Clearance At Full Height And Dump	8.35 ft in

H	Reach At Dump Height	2.66 ft in
Undercarriage		
I	Track Gauge	57.09 in
D	Length Of Track On Ground	6.17 ft in
	Number Of Track Rollers Per Side	5
	Track Shoe Width	13 in
	Ground Pressure	7.68 psi

Specifications

Engine		
	Engine Make	2238
	Engine Model	4D105-5
	Net Power	63 hp
	Displacement	264 cu in
Operational		
	Operating Weight	14726.9 lb
	Fuel Capacity	30.4 gal
	Cooling System Fluid Capacity	5.9 gal
	Static Tipping Load	4150 lb
	Breakout Force - Std Bucket	6400 lb
	Bucket Capacity - Heaped	1.1 yd3
	Max Speed	4.1 mph

Compare similar models

<input type="checkbox"/>	Caterpillar 931B	
	Bucket Capacity - Heaped	1.1 yd3

	Net Power	64.4 hp
--	-----------	---------

Operating Weight	15331 lb
<input type="checkbox"/> Caterpillar 931	
Bucket Capacity - Heaped	1.1 yd3
Net Power	62 hp
Operating Weight	15211.9 lb
<input type="checkbox"/> Komatsu D31Q-16	
Bucket Capacity - Heaped	1.1 yd3
Net Power	63 hp
Operating Weight	15550 lb
Compare	

Find {{brand}} {{model}} {{category}} for Sale

[See {{brand}} {{category}} for sale rbauktion.com](#)
[See {{brand}} {{category}} for sale ironplanet.com](#)
[See {{brand}} {{category}} for sale mascus.com](#)

Company



Popular Searches



Looking for equipment or trucks?

Ritchie Bros. sells more new and used industrial equipment and trucks than any other company in the world.

[Equipment for sale on rbauction.com](#)

[Equipment for sale on ironplanet.com](#)

[Equipment for sale on mascus.com](#)

[Sell your equipment](#)