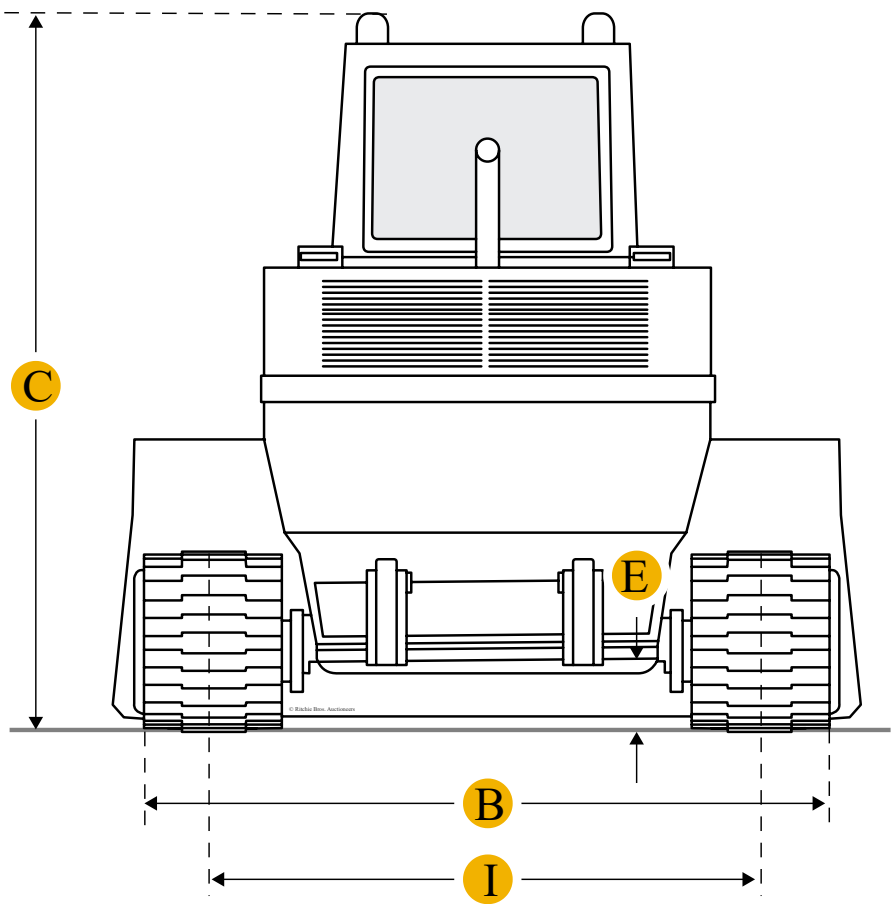
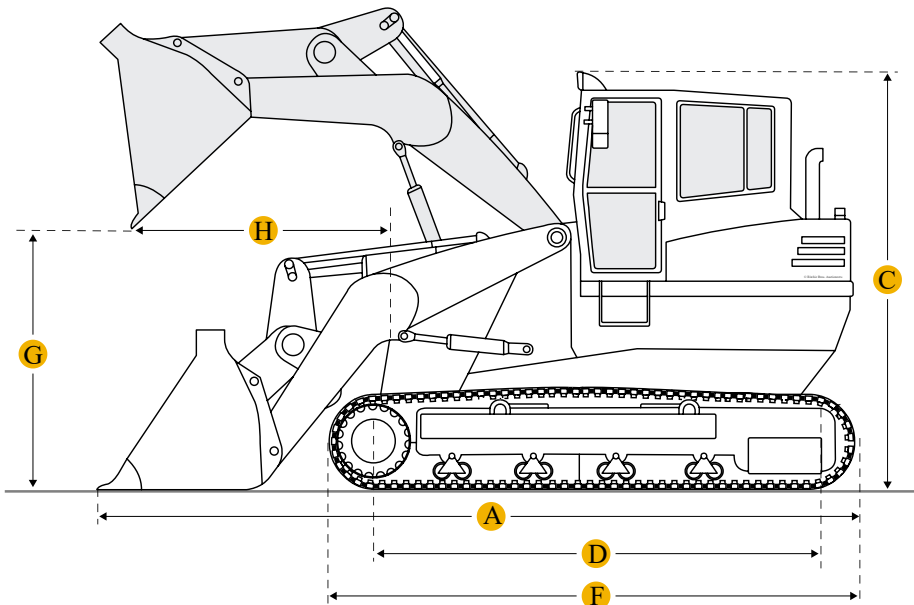
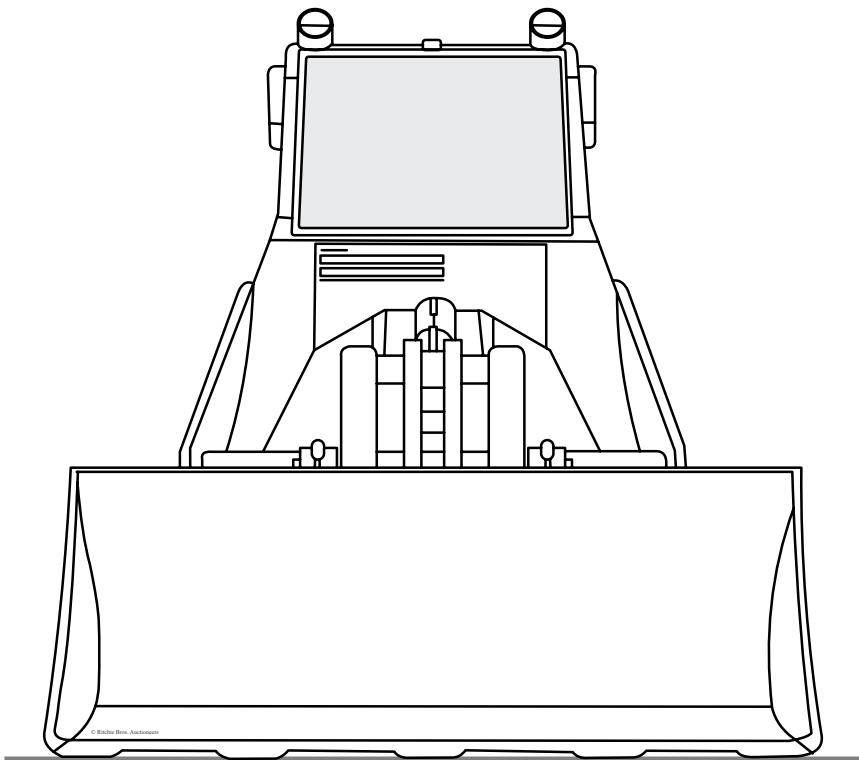




Komatsu D31PG-20A Crawler Loader



Units 

Imperial

Metric

Dimensions

Dimensions

A	Length With Bucket On Ground	12.9 ft in
E	Ground Clearance	1.22 ft in
B	Width To Outside Of Tracks	7.39 ft in

C	Height To Top Of Cab	8.95 ft in
F	Length To Front Of Track	9.88 ft in
Undercarriage		
I	Track Gauge	64.97 in
D	Length Of Track On Ground	7.17 ft in
	Number Of Track Rollers Per Side	6
	Track Shoe Width	23.63 in

## Specifications

Engine		
	Number Of Cylinders	6
	Engine Make	2238
	Engine Model	6D95L
	Net Power	71 hp
	Power Measured @	2350 rpm
	Displacement	298.5 cu in
Operational		
	Operating Weight	15256 lb

## Compare similar models

<input type="checkbox"/>	<a href="#">Komatsu D31P-20A</a>	
	Net Power	71 hp
	Operating Weight	14991.5 lb
<input type="checkbox"/>	<a href="#">Komatsu D31Q-20</a>	
	Net Power	69.8 hp
	Operating Weight	15697 lb
<input type="checkbox"/>	<a href="#">Komatsu D31S-20</a>	

Net Power	69.8 hp
Operating Weight	14947.4 lb
Compare	

## Find Komatsu D31PG-20A Crawler Loader for Sale

- [See Komatsu Crawler Loader for sale rbauction.com](#)
- [See Komatsu Crawler Loader for sale ironplanet.com](#)
- [See Komatsu Crawler Loader for sale mascus.com](#)

Need help? Contact Us

English

Company +

Popular Searches +

### Looking for equipment or trucks?

Ritchie Bros. sells more new and used industrial equipment and trucks than any other company in the world.

Equipment for sale on rbauction.com

Equipment for sale on ironplanet.com

Equipment for sale on mascus.com

Sell your equipment

© 2007-2018 RitchieSpecs Equipment Specifications Ritchie Bros. Auctioneers © [Privacy Statement](#) | [Terms of Use](#)  
OEM specifications are provided for base units. Actual equipment may vary with options.