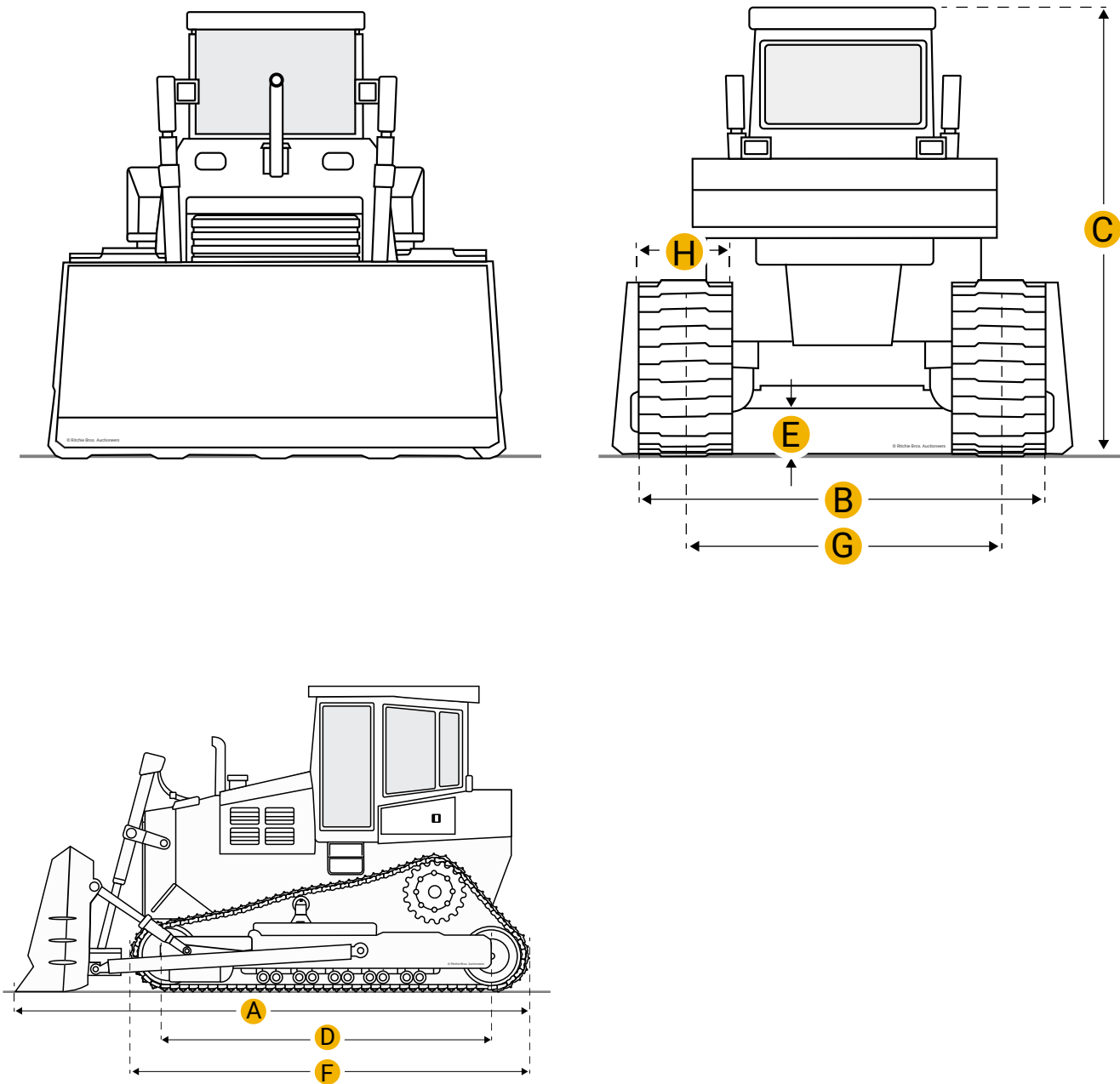


[Home](#)

Komatsu D21A-8E0 Crawler Tractor



Units

Imperial

Metric

Dimensions

Dimensions

A Length W/ Blade

10.67 ft in

C	Height To Top Of Cab	5.86 ft in
E	Ground Clearance	1.17 ft in
Undercarriage		
H	Standard Shoe Size	11.82 in
	Ground Contact Area	1570 in2
	Number Of Shoes Per Side	37
	Number Of Track Rollers Per Side	5
	Number Of Carrier Rollers Per Side	1
	Ground Pressure	4.41 psi

Specifications

Engine

Number Of Cylinders	4
Engine Make	Komatsu
Engine Model	4D94LE-2
Gross Power	43.3 hp
Power Measured @	2450 rpm
Max Torque	128.4 lb ft
Displacement	186 cu in
Torque Measured @	1300 rpm

Operational

Operating Weight	8179.2 lb
Fuel Capacity	15.9 gal
Cooling System Fluid Capacity	2.7 gal
Engine Oil Capacity	1.8 gal
Hydraulic Fluid Capacity	5.6 gal
Final Drives Fluid Capacity	1.6 gal

Transmission

Number Of Forward Gears	2
Number Of Reverse Gears	2
Max Speed - Forward	2.7 mph
Max Speed - Reverse	3.5 mph

Compare similar models

☐ [Mitsubishi BD2J-DPS](#)

Operating Weight	8333.5 lb
------------------	-----------

☐ [Hitachi DX45M-C Landy](#)

Operating Weight	9546.1 lb
------------------	-----------

☐ [Hitachi DX45-C Landy](#)

Operating Weight	8840.6 lb
------------------	-----------

Compare

Find {{brand}} {{model}} {{category}} for Sale

[See {{brand}} {{category}} for sale rbaction.com](#)

[See {{brand}} {{category}} for sale ironplanet.com](#)

[See {{brand}} {{category}} for sale mascus.com](#)

Company



Popular Searches



Looking for equipment or trucks?

Ritchie Bros. sells more new and used industrial equipment and trucks than any other company in the world.

[Equipment for sale on rbauction.com](#)

[Equipment for sale on ironplanet.com](#)

[Equipment for sale on mascus.com](#)

[Sell your equipment](#)