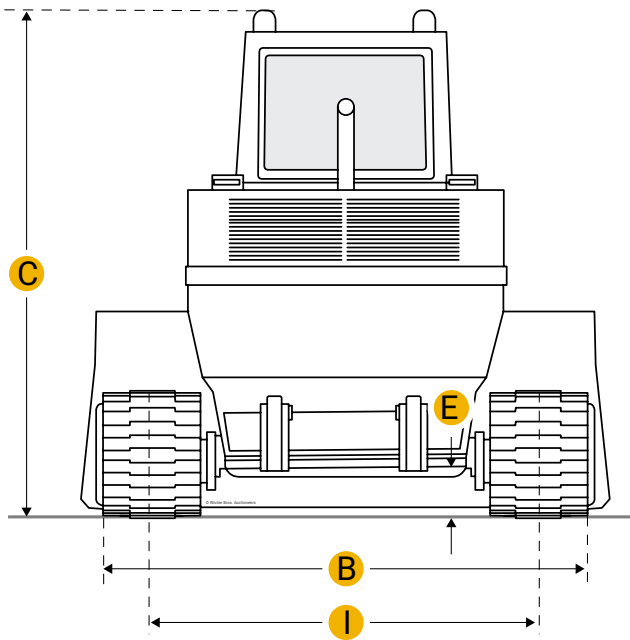
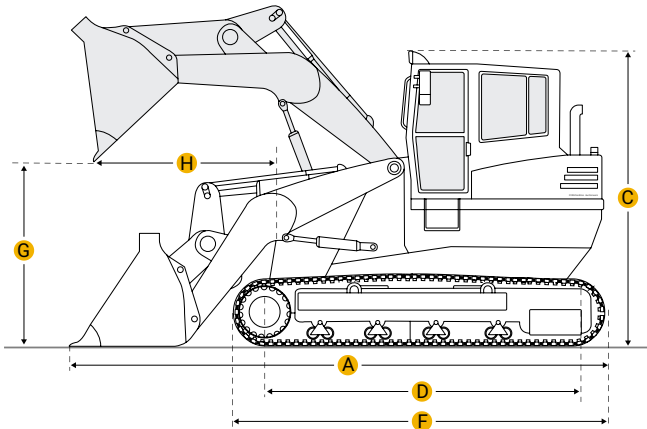
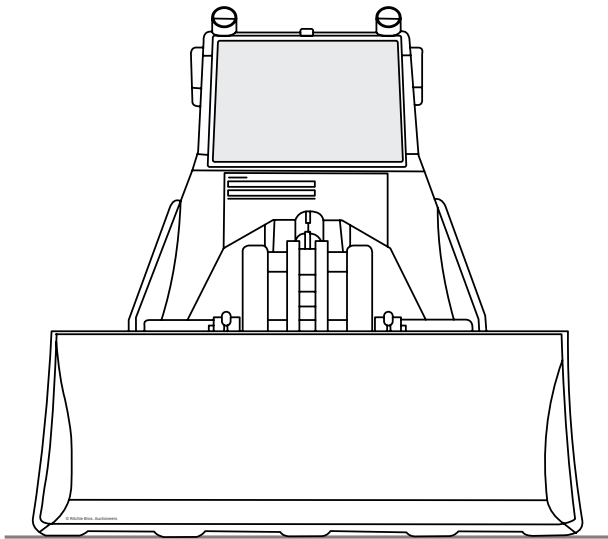


[Home](#)

Komatsu D20Q-5 Crawler Loader



Units

Imperial

Metric

Dimensions

Dimensions

A	Length With Bucket On Ground	11.31 ft in
E	Ground Clearance	1.24 ft in
B	Width To Outside Of Tracks	6.57 ft in

C	Height To Top Of Cab	7.17 ft in
G	Clearance At Full Height And Dump	7.34 ft in
H	Reach At Dump Height	2.17 ft in
Undercarriage		
I	Track Gauge	58.67 in
D	Length Of Track On Ground	5.53 ft in
	Ground Pressure	3.41 psi
	Number Of Track Rollers Per Side	5
	Track Shoe Width	20.08 in

Specifications

Engine		
	Engine Make	2238
	Engine Model	4D94
	Net Power	39 hp
	Displacement	179 cu in
Operational		
	Operating Weight	8994.9 lb
	Fuel Capacity	15.9 gal
	Cooling System Fluid Capacity	3.5 gal
	Static Tipping Load	5160 lb
	Breakout Force - Std Bucket	8950 lb
	Bucket Capacity - Heaped	0.6 yd3
	Max Speed	4.6 mph

Compare similar models

☐ [Komatsu D20S-5](#)

0.6 yd3

Bucket Capacity - Heaped

Net Power	39 hp
Operating Weight	8311.5 lb
<input type="checkbox"/> Komatsu D21Q-5	
Bucket Capacity - Heaped	0.6 yd3
Net Power	39 hp
Operating Weight	9130 lb
<input type="checkbox"/> Komatsu D21S-3	
Bucket Capacity - Heaped	0.6 yd3
Net Power	37 hp
Operating Weight	8600 lb
Compare	

Find {{brand}} {{model}} {{category}} for Sale

[See {{brand}}_{{category}} for sale rbauction.com](#)
[See {{brand}}_{{category}} for sale ironplanet.com](#)
[See {{brand}}_{{category}} for sale mascus.com](#)

Company



Popular Searches



Looking for equipment or trucks?

Ritchie Bros. sells more new and used industrial equipment and trucks than any other company in the world.

Equipment for sale on [rbauction.com](#)

Equipment for sale on [ironplanet.com](#)

Equipment for sale on [mascus.com](#)

[Sell your equipment](#)