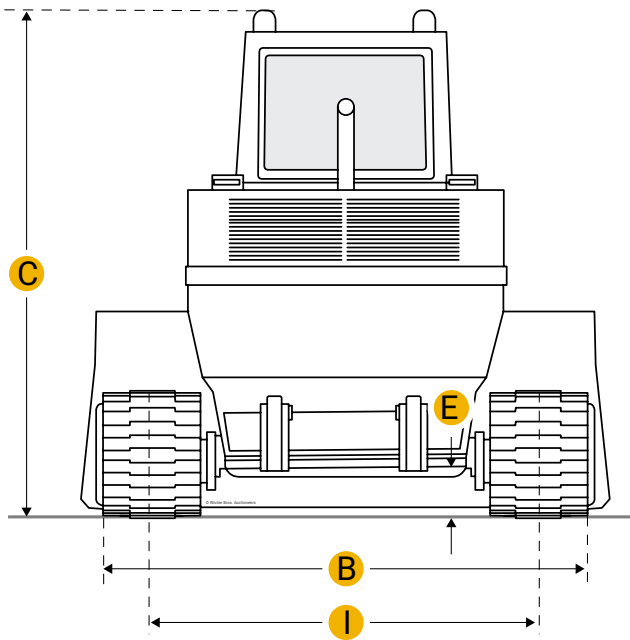
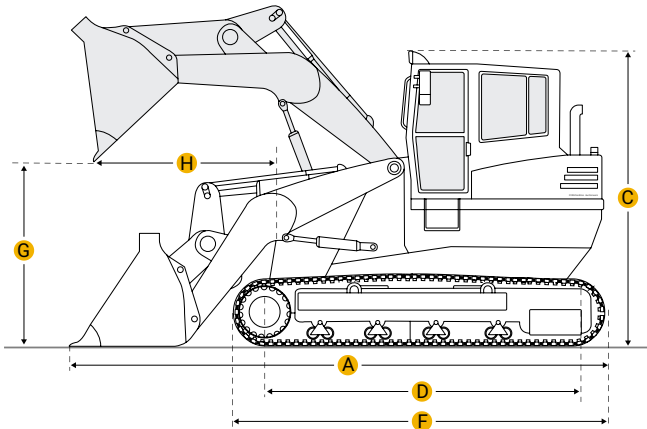
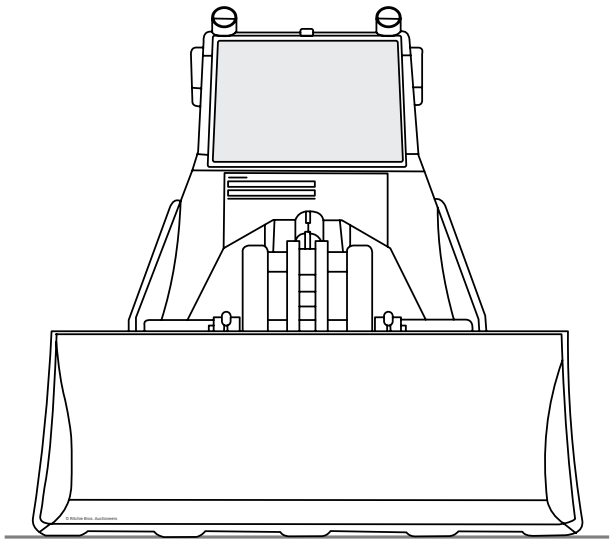


[Home](#)

Komatsu D10S-2 Crawler Loader



Units

Imperial

Metric

Dimensions

Dimensions

A	Length With Bucket On Ground	9.52 ft in
E	Ground Clearance	0.66 ft in
B	Width To Outside Of Tracks	4.43 ft in

C	Height To Top Of Cab	6.5 ft in
G	Clearance At Full Height And Dump	5.75 ft in
H	Reach At Dump Height	1.97 ft in
Undercarriage		
I	Track Gauge	41.74 in
D	Length Of Track On Ground	4.81 ft in
	Ground Pressure	3.7 psi
	Number Of Track Rollers Per Side	4
	Track Shoe Width	9.85 in

---

## Specifications

Engine		
	Engine Make	2238
	Engine Model	2D94
	Net Power	21 hp
	Displacement	89.7 cu in
Operational		
	Operating Weight	4277 lb
	Fuel Capacity	11.4 gal
	Cooling System Fluid Capacity	2.1 gal
	Static Tipping Load	2650 lb
	Breakout Force - Std Bucket	3280 lb
	Bucket Capacity - Heaped	0.4 yd3
	Max Speed	2.9 mph

---

## Compare similar models

☐ [Komatsu D10S-1](#)

0.4 yd3

Bucket Capacity - Heaped

Net Power	20 hp
Operating Weight	3902.2 lb

Compare

Find {{brand}} {{model}} {{category}} for Sale

[See {{brand}}\\_{{category}} for sale rbauction.com](#)

[See {{brand}}\\_{{category}} for sale ironplanet.com](#)

[See {{brand}}\\_{{category}} for sale mascus.com](#)

Need help? Contact Us

 English

Company +

Popular Searches +

Looking for equipment or trucks?

Ritchie Bros. sells more new and used industrial equipment and trucks than any other company in the world.

Equipment for sale on rbauction.com

Equipment for sale on ironplanet.com

Equipment for sale on mascus.com

Sell your equipment