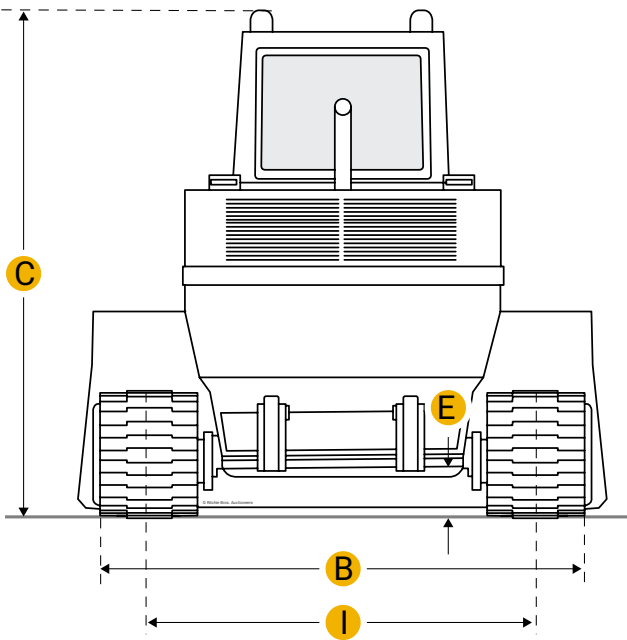
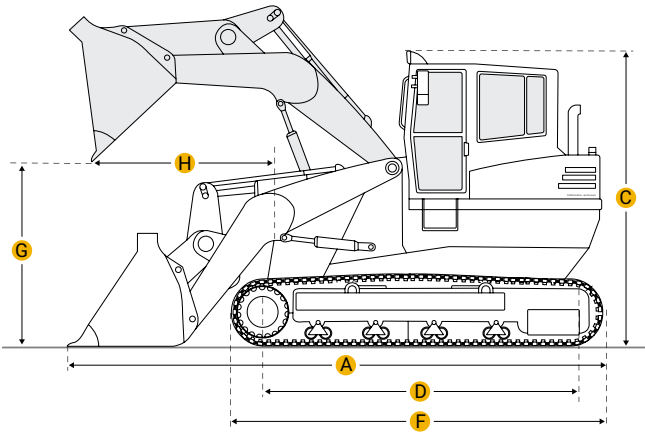
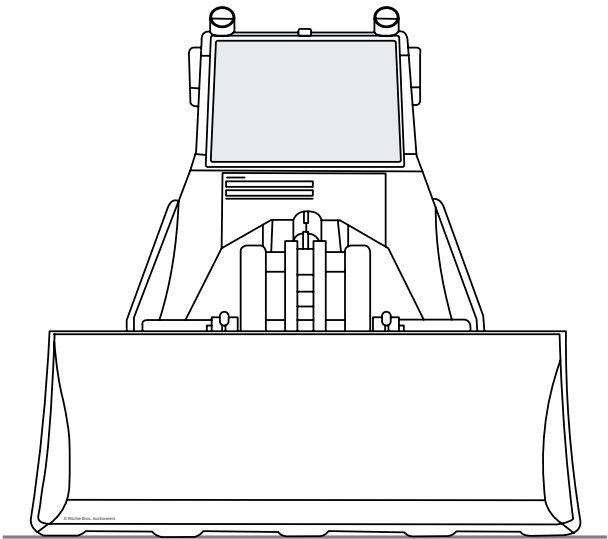


[Home](#)

John Deere 655C Series II Crawler Loader



Units

Imperial

Metric

Dimensions

Dimensions

| | | |
|---|------------------------------|-------------|
| A | Length With Bucket On Ground | 20.12 ft in |
| E | Ground Clearance | 1.3 ft in |
| B | Width To Outside Of Tracks | 7.18 ft in |

| | | |
|---------------|-----------------------------------|-------------|
| C | Height To Top Of Cab | 10.27 ft in |
| G | Clearance At Full Height And Dump | 9.28 ft in |
| H | Reach At Dump Height | 3.52 ft in |
| F | Length To Front Of Track | 14.24 ft in |
| Undercarriage | | |
| I | Track Gauge | 66.15 in |
| D | Length Of Track On Ground | 8.13 ft in |
| | Number Of Shoes Per Side | 42 |
| | Ground Contact Area | 3902 in2 |
| | Ground Pressure | 8.7 psi |
| | Number Of Track Rollers Per Side | 6 |
| | Track Shoe Width | 20 in |

Specifications

| | | |
|-------------|-------------------------------|-------------------------------|
| Engine | | |
| | Number Of Cylinders | 4 |
| | Engine Make | 2245 |
| | Engine Model | D 924 T-EA1 |
| | Net Power | 130 hp |
| | Power Measured @ | 2000 rpm |
| | Max Torque | 450 lb ft |
| | Aspiration | Water-Cooled and Turbocharged |
| | Torque Measured @ | 1200 rpm |
| | Displacement | 409 cu in |
| Operational | | |
| | Operating Weight | 33950 lb |
| | Fuel Capacity | 68.7 gal |
| | Cooling System Fluid Capacity | 18 gal |

| | |
|-----------------------------------|--|
| Engine Oil Capacity | 5.3 gal |
| Final Drive Fluid Capacity - Each | 2.3 gal |
| Hydraulic System Fluid Capacity | 34.4 gal |
| Static Tipping Load | 23082.4 lb |
| Breakout Force - Std Bucket | 27675 lb |
| Bucket Capacity - Heaped | 2.4 yd3 |
| Operating Voltage | 24 V |
| Alternator Supplied Amperage | 55 amps |
| Max Speed | 6.8 mph |
| Hydraulic | |
| Pump Type | Variable-Displacement piston pump with load-sensing proportional pump flow control |
| Pump Flow Capacity | 41 gal/min |
| Relief Valve Pressure | 3770 psi |
| Raise Time | 6.5 sec |
| Dump Time | 1.5 sec |
| Lower Time | 2.1 sec |

Compare similar models



[John Deere 655C](#)

| | |
|--------------------------|---------|
| Bucket Capacity - Heaped | 2.4 yd3 |
| Net Power | 130 hp |



[Caterpillar 953C](#)

| | |
|--------------------------|--------|
| Bucket Capacity - Heaped | 2 yd3 |
| Net Power | 128 hp |



[Komatsu D57S-1](#)

| | |
|------------------|------------|
| Operating Weight | 32895.2 lb |
|------------------|------------|

| | |
|--------------------------|------------|
| Bucket Capacity - Heaped | 2.4 yd3 |
| Net Power | 135 hp |
| Operating Weight | 33686.7 lb |

Compare

Find {{brand}} {{model}} {{category}} for Sale

[See {{brand}}_{{category}} for sale rbauction.com](#)

[See {{brand}}_{{category}} for sale ironplanet.com](#)

[See {{brand}}_{{category}} for sale mascus.com](#)

Need help? [Contact Us](#)

 English

Company +

Popular Searches +

Looking for equipment or trucks?

Ritchie Bros. sells more new and used industrial equipment and trucks than any other company in the world.

[Equipment for sale on rbauction.com](#)

[Equipment for sale on ironplanet.com](#)

[Equipment for sale on mascus.com](#)

[Sell your equipment](#)