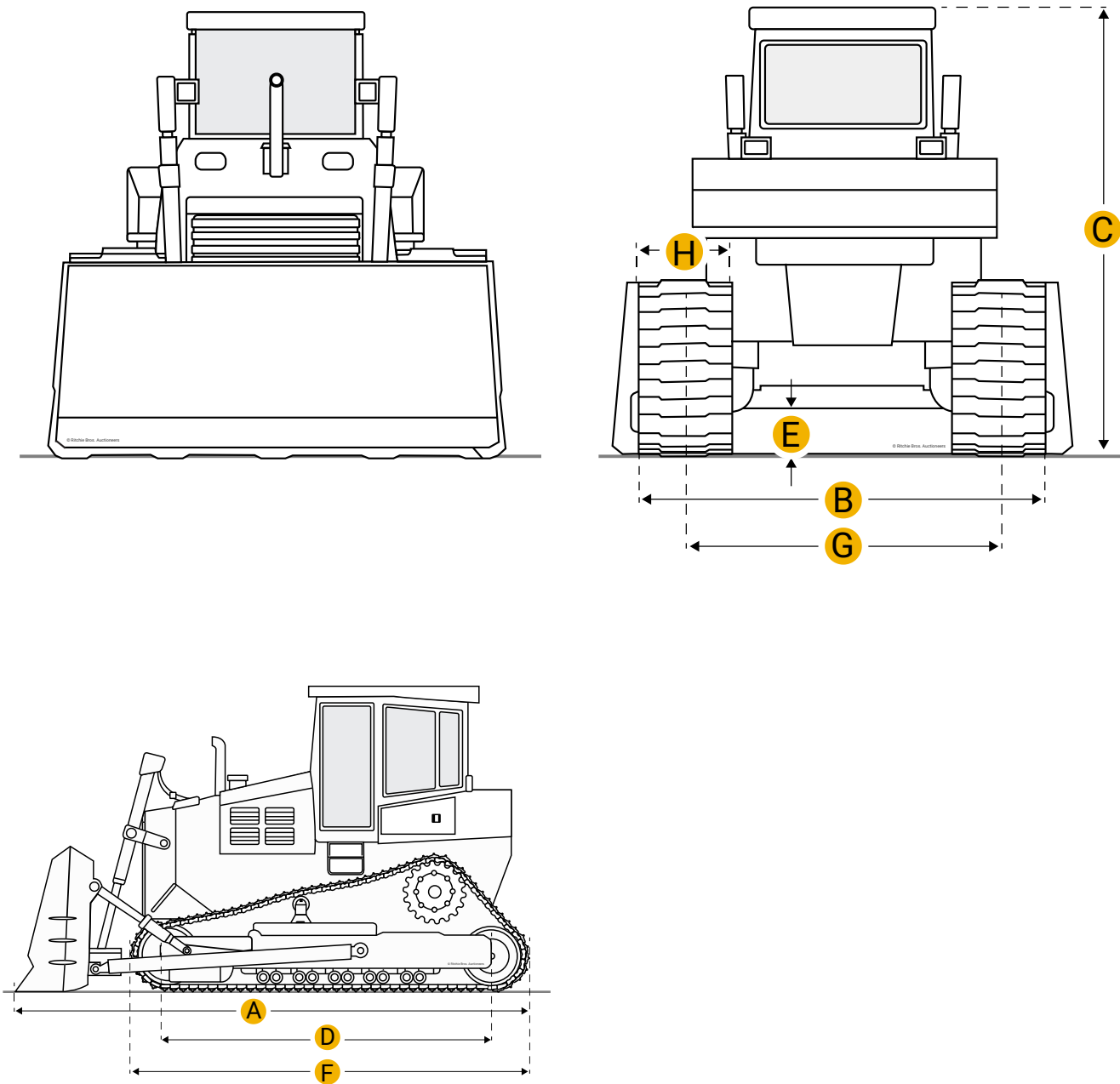


[Home](#)

Caterpillar D5M XL Crawler Tractor



Units

Imperial

Metric

Dimensions

Dimensions

A Length W/ Blade

14.95 ft in

B	Width Over Tracks	7.65 ft in
C	Height To Top Of Cab	9.85 ft in
D	Length Of Track On Ground	7.84 ft in
E	Ground Clearance	1.27 ft in
F	Length W/O Blade	11.63 ft in

Undercarriage

G	Track Gauge	5.81 ft in
H	Standard Shoe Size	22.05 in
	Number Of Shoes Per Side	41
	Ground Pressure	6.22 psi
	Ground Contact Area	4146 in ²
	Number Of Track Rollers Per Side	7

Specifications

Engine

Number Of Cylinders	6
Engine Make	2236
Engine Model	3116T
Gross Power	121 hp
Net Power	110 hp
Power Measured @	2100 rpm
Displacement	402.8 cu in
Aspiration	Turbocharged

Operational

Operating Weight	25794.1 lb
Fuel Capacity	57.6 gal
Cooling System Fluid Capacity	12.2 gal
Engine Oil Capacity	6.9 gal

Hydraulic Fluid Capacity	8.5 gal
Powertrain Fluid Capacity	27.8 gal
Final Drives Fluid Capacity	1.6 gal
Operating Voltage	24 V
Alternator Supplied Amperage	70 amps
Transmission	
Transmission Type	Power Shift
Number Of Forward Gears	3
Number Of Reverse Gears	3
Max Speed - Forward	6.2 mph
Max Speed - Reverse	7.5 mph
Hydraulic System	
Pump Type	Piston
Relief Valve Pressure	3000 psi
Pump Flow Capacity	25 gal/min
Standard Blade	
Width	10.1 ft in
Height	43.7 in
Capacity	3.4 yd3
Cutting Depth	17.4 in

Find {{brand}} {{model}} {{category}} for Sale

[See {{brand}}-{{category}} for sale rbaction.com](#)

[See {{brand}}-{{category}} for sale ironplanet.com](#)

[See {{brand}}-{{category}} for sale mascus.com](#)

Company



Popular Searches



Looking for equipment or trucks?

Ritchie Bros. sells more new and used industrial equipment and trucks than any other company in the world.

Equipment for sale on [rbauction.com](#)

Equipment for sale on [ironplanet.com](#)

Equipment for sale on [mascus.com](#)

[Sell your equipment](#)