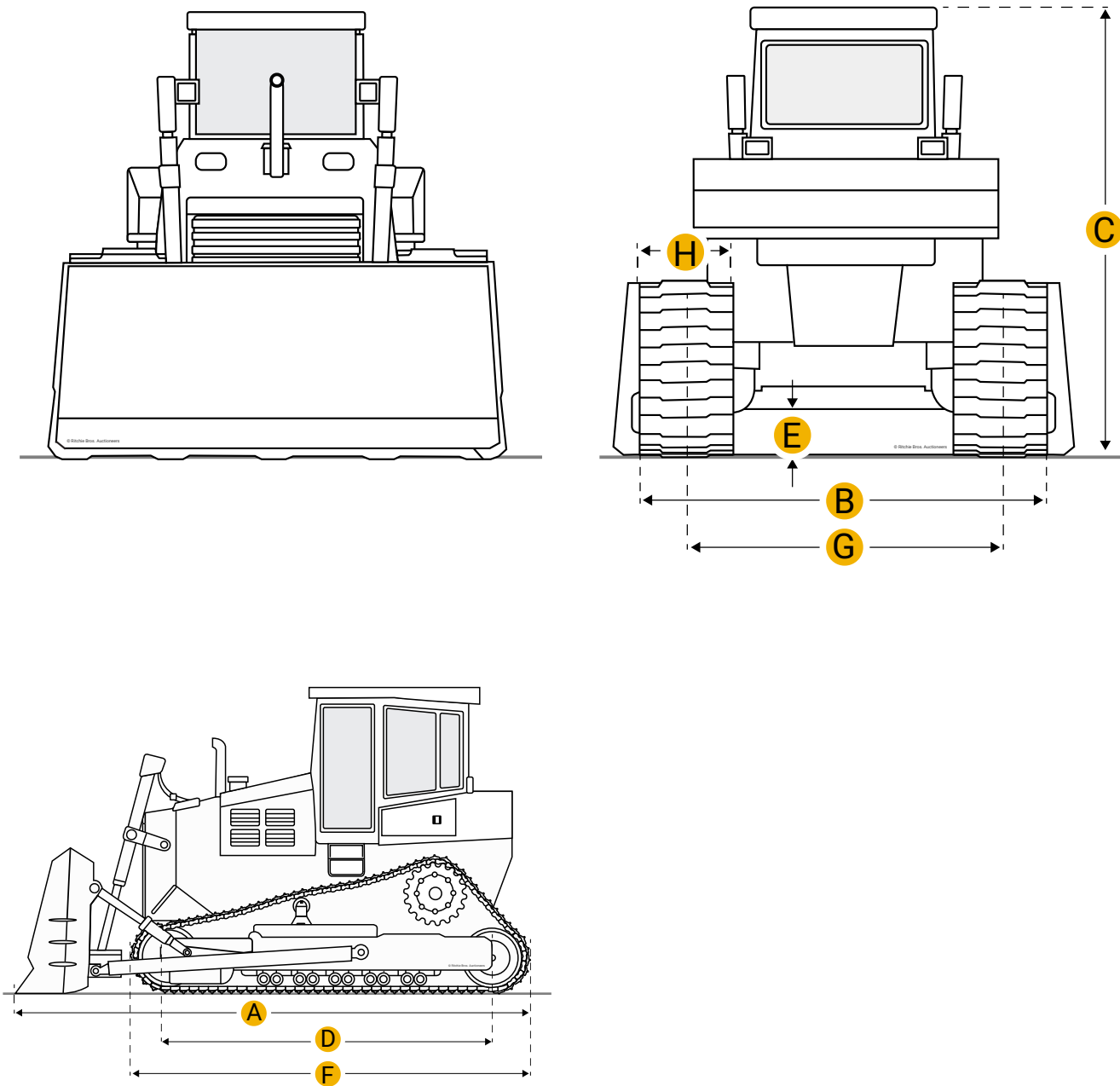


[Home](#)

Caterpillar D10N Crawler Tractor



Units

Imperial

Metric

Dimensions

Dimensions

A   Length W/ Blade

25.46 ft in

B	Width Over Tracks	10.83 ft in
C	Height To Top Of Cab	13.92 ft in
D	Length Of Track On Ground	12.7 ft in
E	Ground Clearance	2.02 ft in
F	Length W/O Blade	18.34 ft in
Undercarriage		
G	Track Gauge	8.37 ft in
H	Standard Shoe Size	24.02 in
	Ground Contact Area	7331.52 in2
	Number Of Track Rollers Per Side	8
	Ground Pressure	17.28 psi

---

## Specifications

Engine		
	Engine Make	2236
	Engine Model	3412
	Gross Power	520 hp
	Displacement	1647.7 cu in
	Aspiration	Turbocharged
Operational		
	Operating Weight	126567.4 lb
	Fuel Capacity	270.3 gal
	Hydraulic Fluid Capacity	28.6 gal
Transmission		
	Transmission Type	powershift
	Number Of Forward Gears	3
	Number Of Reverse Gears	3
	Max Speed - Forward	7.8 mph

Max Speed - Reverse	9.7 mph
Hydraulic System	
Relief Valve Pressure	2697.8 psi
Pump Flow Capacity	107.8 gal/min
Standard Blade	
Width	16 ft in
Height	80.8 in
Capacity	22.5 yd3
Cutting Depth	26.6 in

---

### Compare similar models

<input type="checkbox"/>	<a href="#">Liebherr PR766 LITRONIC</a>	
Operating Weight		119461.9 lb
<input type="checkbox"/>	<a href="#">Komatsu D275AX-5SL</a>	
Operating Weight		116528 lb
<input type="checkbox"/>	<a href="#">Caterpillar D9R WHA</a>	
Operating Weight		105630.1 lb
<div>Compare</div>		

---

### Find {{brand}} {{model}} {{category}} for Sale

[See {{brand}}\\_{{category}} for sale rbauktion.com](#)  
[See {{brand}}\\_{{category}} for sale ironplanet.com](#)  
[See {{brand}}\\_{{category}} for sale mascus.com](#)

**Company**



---

**Popular Searches**



---

**Looking for equipment or trucks?**

Ritchie Bros. sells more new and used industrial equipment and trucks than any other company in the world.

[Equipment for sale on rbauction.com](#)

[Equipment for sale on ironplanet.com](#)

[Equipment for sale on mascus.com](#)

[Sell your equipment](#)