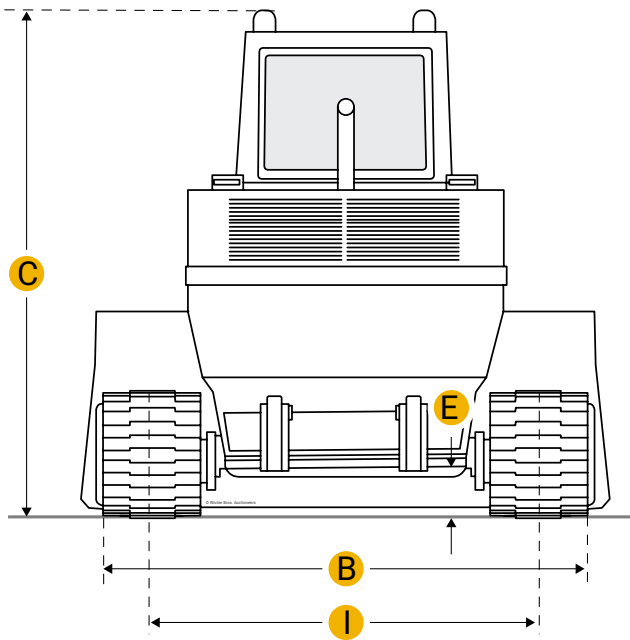
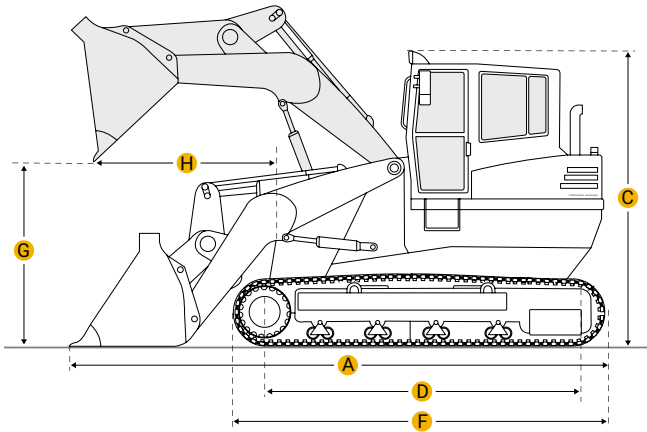
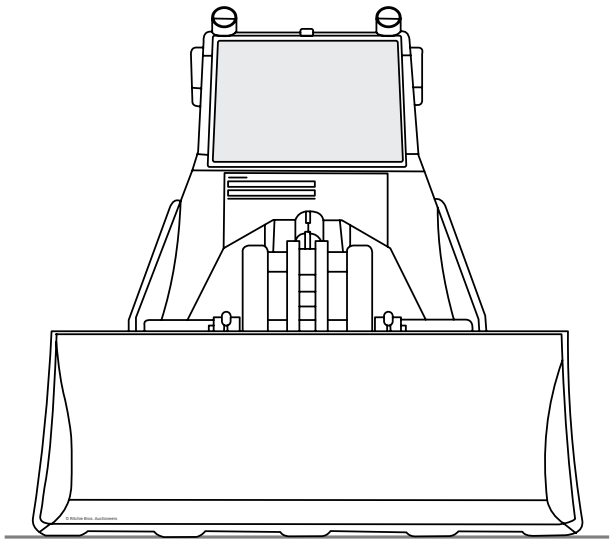


[Home](#)

Caterpillar 983 Crawler Loader



Units

Imperial

Metric

Dimensions

Dimensions

| | | |
|---|------------------------------|-------------|
| A | Length With Bucket On Ground | 22.25 ft in |
| E | Ground Clearance | 1.97 ft in |
| B | Width To Outside Of Tracks | 9.52 ft in |

| | | |
|---------------|-----------------------------------|-------------|
| G | Clearance At Full Height And Dump | 11.98 ft in |
| H | Reach At Dump Height | 7.09 ft in |
| F | Length To Front Of Track | 15.16 ft in |
| Undercarriage | | |
| I | Track Gauge | 92.13 in |
| D | Length Of Track On Ground | 11.09 ft in |
| | Number Of Shoes Per Side | 42 |
| | Number Of Track Rollers Per Side | 7 |
| | Track Shoe Width | 22.05 in |
| | Ground Contact Area | 5843.52 in2 |

Specifications

| | | |
|-------------|-----------------------------------|--------------|
| Engine | | |
| | Number Of Cylinders | 6 |
| | Engine Make | 2236 |
| | Engine Model | D343 |
| | Net Power | 275 hp |
| | Power Measured @ | 2060 rpm |
| | Aspiration | turbocharged |
| | Displacement | 891 cu in |
| Operational | | |
| | Operating Weight | 71650.3 lb |
| | Fuel Capacity | 134.8 gal |
| | Cooling System Fluid Capacity | 23 gal |
| | Engine Oil Capacity | 10.9 gal |
| | Final Drive Fluid Capacity - Each | 8.5 gal |
| | Hydraulic System Fluid Capacity | 38.1 gal |
| | Static Tipping Load | 48680 lb |

| | |
|-------------------------------------|---------------|
| Breakout Force - Std Bucket | 43850 lb |
| Bucket Capacity - Struck | 3.8 yd3 |
| Bucket Capacity - Heaped | 4.9 yd3 |
| Operating Voltage | 24 V |
| Alternator Supplied Amperage | 19 amps |
| Max Speed | 7.4 mph |
| Hydraulic | |
| Pump Flow Capacity | 137.4 gal/min |
| Relief Valve Pressure | 2150 psi |
| Raise Time | 7.7 sec |
| Dump Time | 1.4 sec |
| Lower Time | 3.2 sec |

Compare similar models

| | |
|---------------------------------|----------------------------------|
| <input type="checkbox"/> | Komatsu D95S-2 |
| Bucket Capacity - Heaped | 4.2 yd3 |
| Net Power | 245 hp |
| Operating Weight | 65700 lb |
| <input type="checkbox"/> | Komatsu D95S-1 |
| Bucket Capacity - Heaped | 4.2 yd3 |
| Net Power | 240 hp |
| Operating Weight | 62130 lb |
| <input type="checkbox"/> | Caterpillar 973C |
| Bucket Capacity - Heaped | 3.7 yd3 |
| Net Power | 242 hp |
| Operating Weight | 58153 lb |

Compare

Find {{brand}} {{model}} {{category}} for Sale

[See {{brand}}_{{category}} for sale rbauction.com](#)
[See {{brand}}_{{category}} for sale ironplanet.com](#)
[See {{brand}}_{{category}} for sale mascus.com](#)

Need help? [Contact Us](#)

 English

Company

+

Popular Searches

+

Looking for equipment or trucks?

Ritchie Bros. sells more new and used industrial equipment and trucks than any other company in the world.

Equipment for sale on [rbauction.com](#)

Equipment for sale on [ironplanet.com](#)

Equipment for sale on [mascus.com](#)

[Sell your equipment](#)