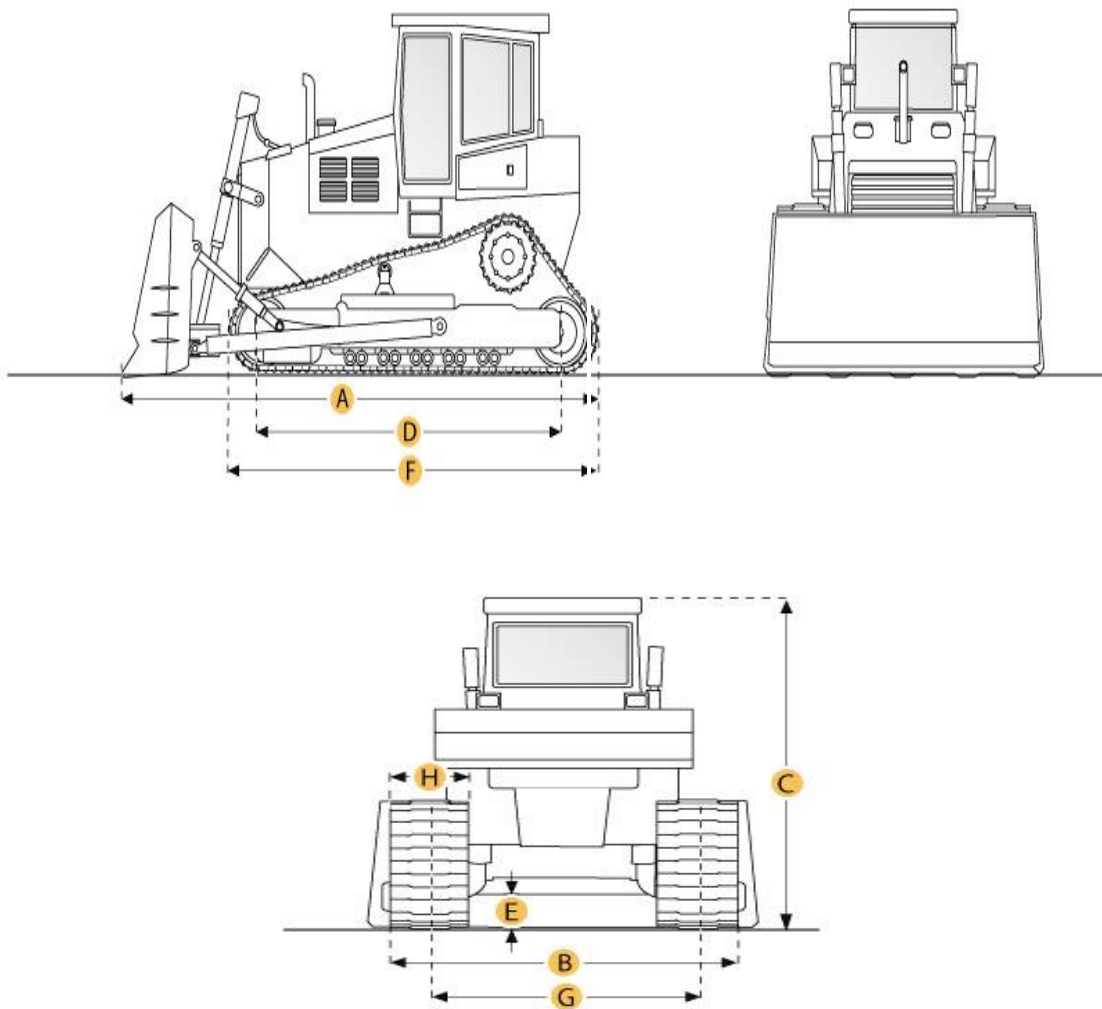


Caterpillar D8R Crawler Tractor



Selected Dimensions

Dimensions

A. Length w/ Blade	21 ft in	6398 mm
B. Width Over Tracks	8.7 ft in	2642 mm
C. Height to Top of Cab	11.5 ft in	3498 mm
D. Length of Track on Ground	10.5 ft in	3206 mm
E. Ground Clearance	1.7 ft in	528 mm
F. Length w/o Blade	14.9 ft in	4554 mm

Undercarriage

G. Track Gauge	6.8 ft in	2082 mm
H. Standard Shoe Size	22 in	560 mm

Specification**Engine**

Make	Caterpillar	
Model	3406C	
Gross Power	328 hp	244.6 kw
Net Power	305 hp	227.4 kw
Power Measured @	2100 rpm	
Displacement	893 cu in	14.6 L
Number of Cylinders	6	
Aspiration	Turbocharged and Aftercooled	

Operational

Operating Weight	73850 lb	33497.8 kg
Fuel Capacity	165.1 gal	625 L
Cooling System Fluid Capacity	24.3 gal	92 L
Engine Oil Capacity	8.6 gal	32.5 L
Hydraulic Fluid Capacity	19 gal	72 L
Power Train Fluid Capacity	38 gal	144 L
Final Drives Fluid Capacity	3.7 gal	14 L
Operating Voltage	24 V	
Alternator Supplied Amperage	50 amps	

Transmission

Type	Power Shift	
Number of Forward Gears	3	
Number of Reverse Gears	3	
Max Speed - Forward	6.7 mph	10.8 km/h
Max Speed - Reverse	8.6 mph	13.8 km/h

Undercarriage

Ground Pressure	13.1 psi	90.3 kPa
Ground Contact Area	5554 in ²	3.6 m ²
Standard Shoe Size	22 in	560 mm
Number of Shoes per Side	44	

Number of Track Rollers per Side	8	
Track Pitch	8.5 in	216 mm
Track Gauge	6.8 ft in	2082 mm

Hydraulic System

Pump type	Piston	
Relief Valve Pressure	3500 psi	24131.6 kPa
Pump Flow Capacity	79.3 gal/min	300 L/min

Standard Blade

Width	12.9 ft in	3937 mm
Height	66.5 in	1690 mm
Capacity	11.4 yd ³	8.7 m ³
Cutting Depth	22.9 in	582 mm

Dimensions

Length w/o Blade	14.9 ft in	4554 mm
Length w/ Blade	21 ft in	6398 mm
Width Over Tracks	8.7 ft in	2642 mm
Height to Top of Cab	11.5 ft in	3498 mm
Length of Track on Ground	10.5 ft in	3206 mm
Ground Clearance	1.7 ft in	528 mm

New & Used Heavy Equipment