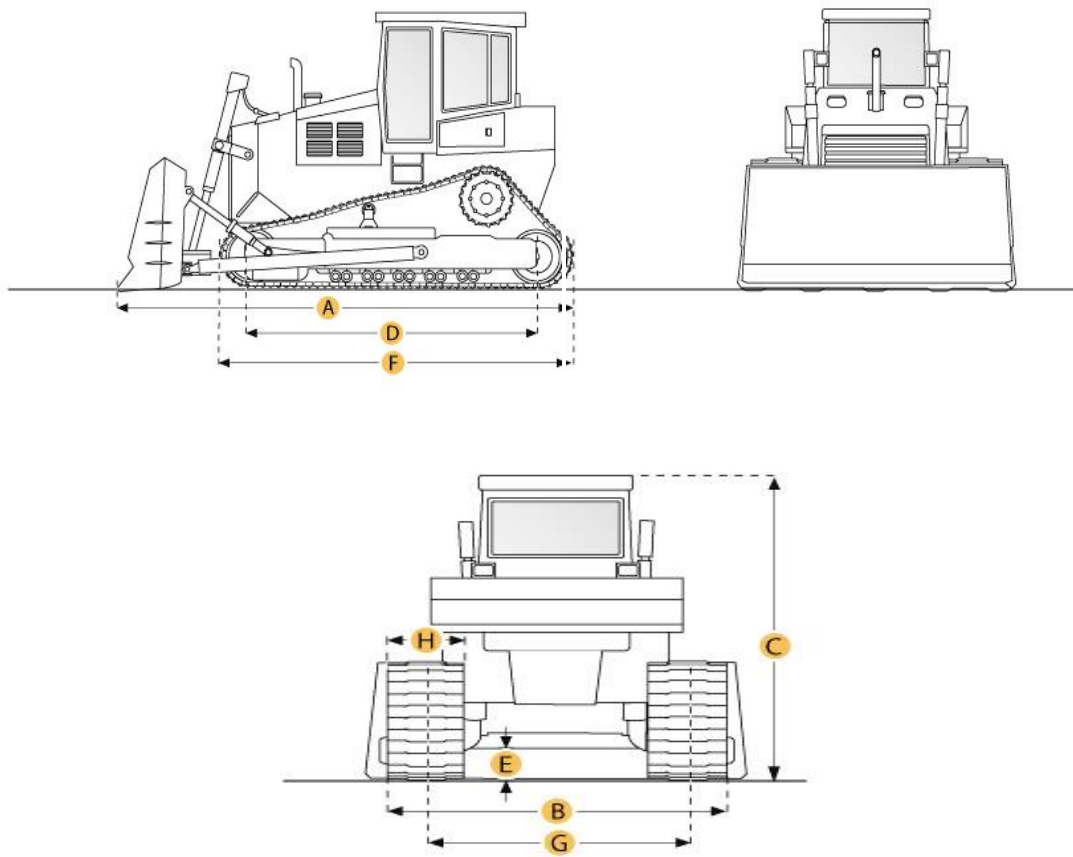


Caterpillar D6R XL Bulldozer (Crawler Tractor)



Selected Dimensions

Dimensions

A. Length w/ Blade	17.5 ft in	5332 mm
B. Width Over Tracks	8 ft in	2440 mm
C. Height to Top of Cab	10.5 ft in	3195 mm
D. Length of Track on Ground	9.3 ft in	2821 mm
E. Ground Clearance	1.3 ft in	383 mm
F. Length w/o Blade	12.7 ft in	3860 mm

Undercarriage

G. Track Gauge	6.2 ft in	1880 mm
H. Standard Shoe Size	22 in	560 mm

Specification

Engine

Make	Caterpillar	
Model	3306	
Gross Power	189 hp	140.9 kw
Net Power	175 hp	130.5 kw
Power Measured @	1900 rpm	
Displacement	638 cu in	10.5 L
Aspiration	Turbocharged	
Number of Cylinders	6	

Operational

Operating Weight	41900 lb	19005.5 kg
Fuel Capacity	101.2 gal	383 L
Cooling System Fluid Capacity	19.5 gal	74 L
Engine Oil Capacity	7.3 gal	27.5 L
Hydraulic Fluid Capacity	20.1 gal	76 L
Powertrain Fluid Capacity	40.9 gal	155 L
Final Drives Fluid Capacity	3.6 gal	13.5 L
Operating Voltage	24 V	
Alternator Supplied Amperage	70 amps	

Transmission

Type	Power Shift	
Number of Forward Gears	3	
Number of Reverse Gears	3	
Max Speed - Forward	7.4 mph	11.9 km/h
Max Speed - Reverse	9.5 mph	15.3 km/h

Undercarriage

Ground Pressure	8.7 psi	59.6 kPa
Ground Contact Area	4888 in ²	3.2 m ²
Standard Shoe Size	22 in	560 mm
Number of Shoes per Side	41	
Number of Track Rollers per Side	7	
Track Pitch	8 in	203 mm
Track Gauge	6.2 ft in	1880 mm

Hydraulic System

Pump type	Piston	
Relief Valve Pressure	2800 psi	19305.3 kPa
Pump Flow Capacity	50.2 gal/min	190 L/min

Standard Blade

Width	10.7 ft in	3260 mm
Height	55.6 in	1412 mm
Capacity	7.3 yd ³	5.6 m ³
Cutting Depth	18.1 in	459 mm

Dimensions

Length w/o Blade	12.7 ft in	3860 mm
Length w/ Blade	17.5 ft in	5332 mm
Width Over Tracks	8 ft in	2440 mm
Height to Top of Cab	10.5 ft in	3195 mm
Length of Track on Ground	9.3 ft in	2821 mm
Ground Clearance	1.3 ft in	383 mm

New & Used Heavy Equipment