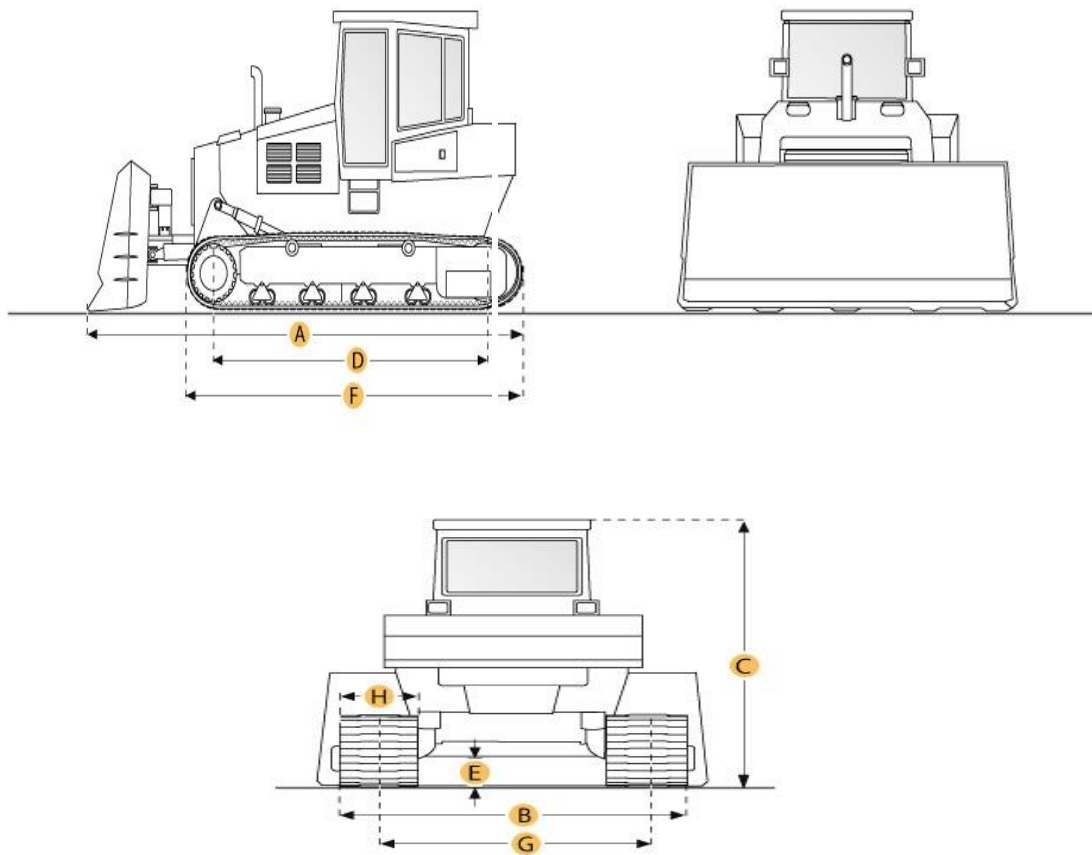


## Caterpillar D3C LGP Series III Crawler Tractor



### Selected Dimensions

#### Dimensions

A. Length w/ Blade	13.2 ft in	4018 mm
B. Width Over Tracks	5.4 ft in	1651 mm
C. Height to Top of Cab	8.7 ft in	2664 mm
D. Length of Track on Ground	6.7 ft in	2055 mm
E. Ground Clearance	0.98 ft in	300 mm
F. Length w/o Blade	9.8 ft in	2981 mm

#### Undercarriage

G. Track Gauge	5.4 ft in	1651 mm
H. Standard Shoe Size	25 in	635 mm

## **Specification**

### **Engine**

Make	Caterpillar	
Model	3046	
Gross Power	78 hp	58.2 kw
Net Power	71 hp	52.9 kw
Power Measured @	2400 rpm	
Displacement	305.1 cu in	5 L
Number of Cylinders	6	
Aspiration	Natural	

### **Operational**

Operating Weight	16842 lb	7639.4 kg
Fuel Capacity	32 gal	121 L
Cooling System Fluid Capacity	2.4 gal	9 L
Engine Oil Capacity	3.4 gal	13 L
Hydraulic Fluid Capacity	15 gal	56.8 L
Powertrain Fluid Capacity	7.4 gal	28.2 L
Final Drives Fluid Capacity	3.5 gal	13.2 L
Operating Voltage	12 V	
Alternator Supplied Amperage	55 amps	

### **Transmission**

Type	Powershift	
Number of Forward Gears	3	
Number of Reverse Gears	3	
Max Speed - Forward	6.7 mph	10.8 km/h
Max Speed - Reverse	7.1 mph	11.4 km/h

### **Undercarriage**

Ground Pressure	4.2 psi	28.6 kPa
Standard Shoe Size	25 in	635 mm
Number of Shoes per Side	39	
Number of Track Rollers per Side	6	
Track Gauge	5.4 ft in	1651 mm

### **Hydraulic System**

Pump type	Gear Style
-----------	------------

Relief Valve Pressure	2500 psi	17236.9 kPa
Pump Flow Capacity	14.3 gal/min	54.1 L/min

**Standard Blade**

Width	10.3 ft in	3145 mm
Height	29.5 in	749 mm
Capacity	1.7 yd <sup>3</sup>	1.3 m <sup>3</sup>
Blade Angle (both directions)	25 degrees	
Cutting Depth	16.7 in	424 mm

**Dimensions**

Length w/o Blade	9.8 ft in	2981 mm
Length w/ Blade	13.2 ft in	4018 mm
Width Over Tracks	5.4 ft in	1651 mm
Height to Top of Cab	8.7 ft in	2664 mm
Length of Track on Ground	6.7 ft in	2055 mm
Ground Clearance	0.98 ft in	300 mm

**New & Used Heavy Equipment**