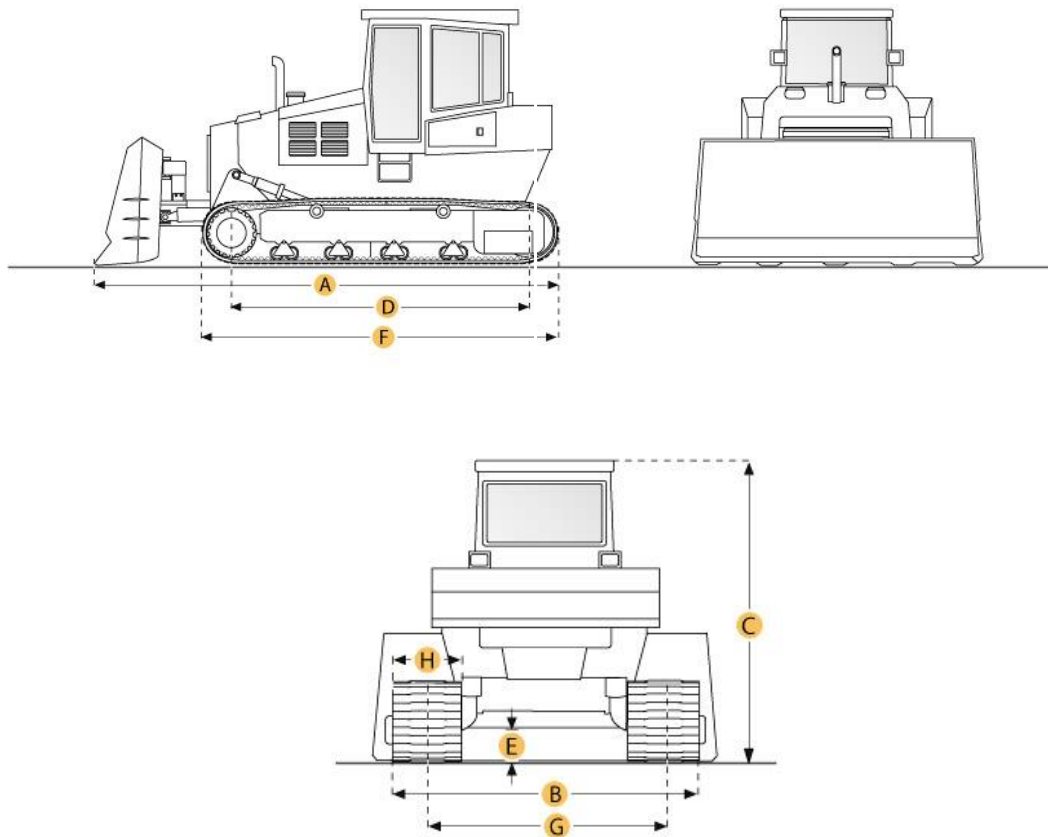


Caterpillar D3C Series III Crawler Tractor



Selected Dimensions

Dimensions

A. Length w/ Blade	12.4 ft in	3774 mm
B. Width Over Tracks	6 ft in	1828 mm
C. Height to Top of Cab	8.7 ft in	2664 mm
D. Length of Track on Ground	6.2 ft in	1902 mm
E. Ground Clearance	0.98 ft in	300 mm
F. Length w/o Blade	9.6 ft in	2933 mm

Undercarriage

G. Track Gauge	4.7 ft in	1422 mm
H. Standard Shoe Size	16 in	406 mm

Specification

Engine

Make	Caterpillar	
Model	3046	
Gross Power	78 hp	58.2 kw
Net Power	71 hp	52.9 kw
Power Measured @	2400 rpm	
Displacement	305 cu in	5 L
Number of Cylinders	6	

Operational

Operating Weight	15518 lb	7038.8 kg
Fuel Capacity	32.2 gal	122 L
Cooling System Fluid Capacity	2.4 gal	9 L
Engine Oil Capacity	3.4 gal	13 L
Hydraulic Fluid Capacity	15 gal	56.8 L
Powertrain Fluid Capacity	7.4 gal	28.2 L
Final Drives Fluid Capacity	2.5 gal	9.5 L
Operating Voltage	12 V	
Alternator Supplied Amperage	55 amps	

Transmission

Type	Power Shift	
Number of Forward Gears	3	
Number of Reverse Gears	3	
Max Speed – Forward	6.7 mph	10.8 km/h
Max Speed – Reverse	7.1 mph	11.4 km/h

Undercarriage

Ground Pressure	6.5 psi	44.5 kPa
Standard Shoe Size	16 in	406 mm
Number of Shoes per Side	37	
Number of Track Rollers per Side	5	
Track Gauge	4.7 ft in	1422 mm

Hydraulic System

Pump type	Gear	
Relief Valve Pressure	2500 psi	17236.9 kPa
Pump Flow Capacity	14.3 gal/min	54.1 L/min

Standard Blade

Width	8.1 ft in	2474 mm
Height	33.1 in	841 mm
Capacity	1.6 yd ³	1.3 m ³
Blade Angle (both directions)	25 degrees	
Cutting Depth	15.7 in	398 mm

Dimensions

Length w/o Blade	9.6 ft in	2933 mm
Length w/ Blade	12.4 ft in	3774 mm
Width Over Tracks	6 ft in	1828 mm
Height to Top of Cab	8.7 ft in	2664 mm
Length of Track on Ground	6.2 ft in	1902 mm
Ground Clearance	0.98 ft in	300 mm

New & Used Heavy Equipment