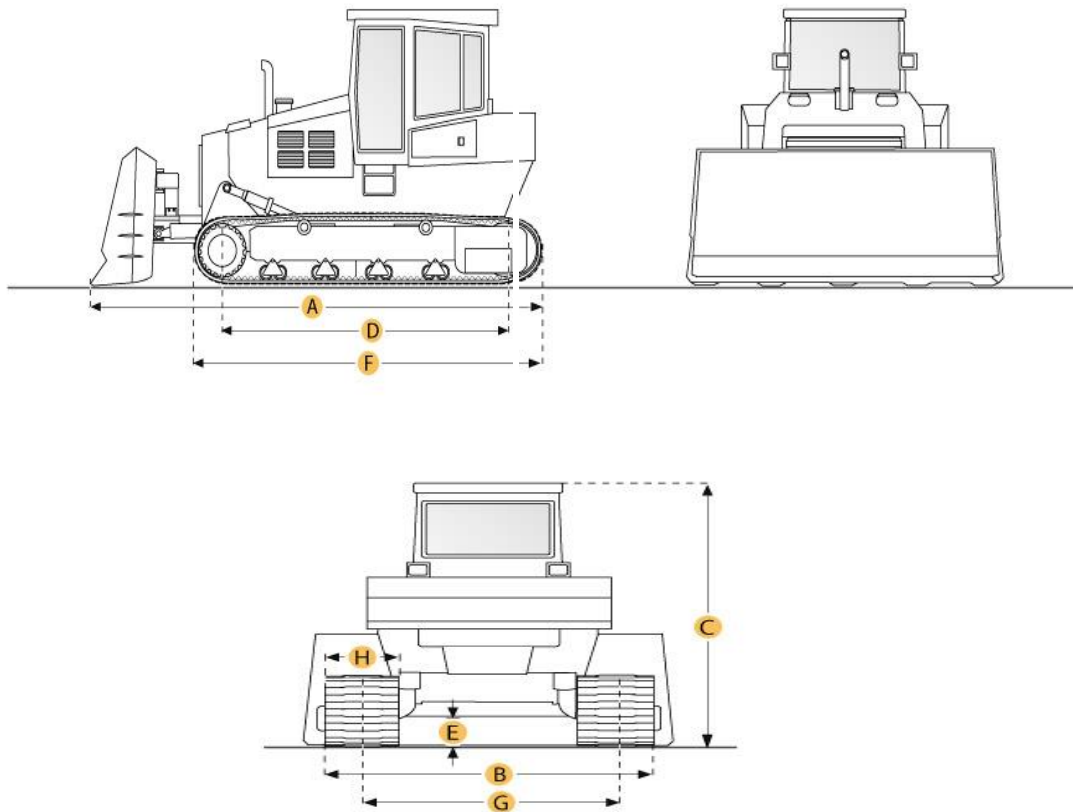


Caterpillar D3C Series II Crawler Tractor



Selected Dimensions

Dimensions

A. Length w/ Blade	12.3 ft in	3740 mm
B. Width Over Tracks	5.8 ft in	1780 mm
C. Height to Top of Cab	8.7 ft in	2664 mm
D. Length of Track on Ground	6.2 ft in	1902 mm
E. Ground Clearance	0.96 ft in	294 mm
F. Length w/o Blade	9.1 ft in	2764 mm

Undercarriage

G. Track Gauge	4.7 ft in	1420 mm
H. Standard Shoe Size	14 in	356 mm

Specification

Engine

Make	Caterpillar	
Model	3204	
Gross Power	76 hp	56.7 kw
Net Power	70 hp	52.2 kw
Power Measured @	2400 rpm	
Displacement	317.3 cu in	5.2 L
Number of Cylinders	4	

Operational

Operating Weight	15434.6 lb	7001 kg
Fuel Capacity	32 gal	121 L
Cooling System Fluid Capacity	5.3 gal	20 L
Engine Oil Capacity	3.2 gal	12 L
Hydraulic Fluid Capacity	15.1 gal	57 L
Final Drives Fluid Capacity	2.1 gal	8 L
Operating Voltage	12 V	
Alternator Supplied Amperage	40 amps	

Transmission

Type	planetary power shift	
Number of Forward Gears	3	
Number of Reverse Gears	3	
Max Speed - Forward	6.6 mph	10.7 km/h
Max Speed - Reverse	7.1 mph	11.4 km/h

Undercarriage

Ground Pressure	7.2 psi	49.6 kPa
Ground Contact Area	2092.5 in ²	1.4 m ²
Standard Shoe Size	14 in	356 mm
Number of Shoes per Side	37	
Number of Track Rollers per Side	5	
Track Gauge	4.7 ft in	1420 mm

Hydraulic System

All About Heavy Equipment & Truck

Pump type	Single-section gear pump	
Relief Valve Pressure	2500 psi	17236.9 kPa
Pump Flow Capacity	14.5 gal/min	55 L/min

Standard Blade

Width	7.9 ft in	2413 mm
Height	33.1 in	840 mm
Capacity	1.6 yd ³	1.3 m ³
Blade Angle (both directions)	25 degrees	
Cutting Depth	15.6 in	397 mm

Dimensions

Length w/o Blade	9.1 ft in	2764 mm
Length w/ Blade	12.3 ft in	3740 mm
Width Over Tracks	5.8 ft in	1780 mm
Height to Top of Cab	8.7 ft in	2664 mm
Length of Track on Ground	6.2 ft in	1902 mm
Ground Clearance	0.96 ft in	294 mm

New & Used Heavy Equipment