



Flywheel power .....70.8 kW/95 HP  
Operating wt. range .....8892 kg/19,603 lb to 10,389 kg/22,900 lb  
Backhoe digging depth up to .....6528 mm/21'5"  
Stick lift at 6' .....3396 kg/7488 lb

# 446B

## BACKHOE LOADER

*Discover  
The Difference*





# Make More, Save More. With The 446B On

Now you can do more work—and keep more of what you earn—with a truly advanced backhoe loader.

It's more than the best that Caterpillar design, engineering and manufacturing expertise can offer. Much more.

The 446B backhoe loader was designed with input from the world's most demanding business people:

- Owner-operators with 30-plus years under their belts.
- Competitive-make users who know what they like—and don't like.
- Contractors who log thousands of hours, year after year—and simply can't afford downtime.

Now the B-Series is ready. Backhoe loaders that mean business.

Your business. Strictly business.

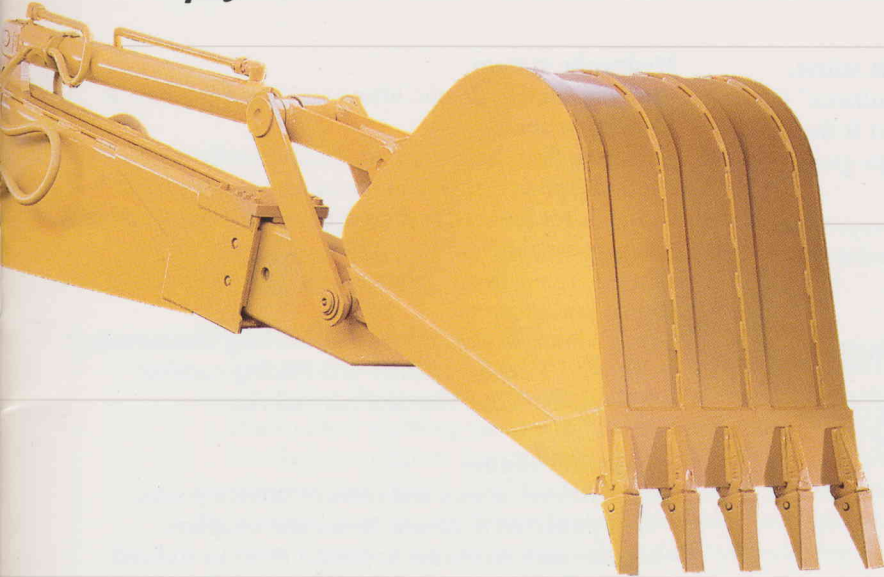


Lift higher, load easier with greater reach. The excavator-style boom enables spill-free truck loading right from the trench—without banging sideboards. You can also work over walls and other obstructions and you'll find it easier to dig under pipes that cross the trench.





# Every Job.



**Discover the difference with the exclusive excavator-style backhoe: Nothing else looks like it. Or works like it.**

One glance and you know it's a Cat backhoe loader. This excavator-style backhoe lets you reach further, dig faster and lift more. And you can keep a narrow bucket in sight since boom width is 10 $\frac{1}{4}$  inches.

**Smooth power to move more material per day.**

You're commanding powerful hydraulics to give you more digging power, digging speed; greater breakout, greater lift.

And your control is smooth, precise. With special features designed in, that give you better "feedback" in the trench. So you can hit your mark, time after time, without slowing your pace.

**More work, more pay.**

It boils down to more jobs in less time—one way the 446B helps you make the most of every business day ...and get the biggest payback for your business.

No more hit-or-miss trenching. Smooth CAT hydraulics give you precise control for working in tight spots. And 16% greater swing torque lets you move in and out of the trench quicker.



(Machines shown in this brochure may have optional equipment.)

# Discover Difference After Difference...

## Everything you've asked for. And then some.

CAT engineers and owner-operator "consultants" left no stone unturned in developing the advanced B-Series backhoe loaders. Even selecting a special high-gloss paint that looks better and lasts longer.

Check out key features that you're sure to appreciate. And see your CAT dealer for full details.

### General purpose bucket

- Top of bucket is parallel to cutting edge for built-in bucket level indicator
- Vertical heel plate for excellent back-dragging capability
- Replacable cutting edge standard; bucket base is pre-drilled to accept bolt-on teeth
- Top and bottom torque tubes resist bending

### Front axle

- Large diameter, double-acting steering cylinder resists bending and is well protected
- Short, well protected tie rods resist bending
- Large 5.5 inch (140 mm) trunnion bearings support the axle to ensure durability on both two wheel drive and four wheel drive models

### CAT 3114 turbo diesel engine

- Designed and built to meet specific B-Series requirements
- High-tech componentry reduces sound levels and improves fuel efficiency
- CAT-designed fuel system
- Cast oil-pan for high impact resistance and added block strength
- Spin-on filters for quick, clean maintenance

### Heavy duty main frame

- Fully welded, one-piece frame absorbs stress and minimizes shock loads to the power train
- Integral backhoe reduces maintenance and service...for a true backhoe loader

### Loader

- Automatic return-to-dig for fast cycles
- Divergent loader arms allow clear view to bucket corners
- Large torque tube resists bending and twisting
- Greatest lifting capacity of any backhoe loader in its class; superior breakout force

### Hydraulic system

- Provides full hydraulic lifting and digging forces at any engine speed
- Variable flow, high-capacity pump exactly matches hydraulic power (flow and pressure) to match work demands for reduced fuel consumption; provides multi-function capability
- Pump "free wheels" when not using implements to save engine horsepower
- Front-mounted tank doubles as working counterweight to improve machine balance and roading comfort
- Spin-on hydraulic filter for easy service

### Single tilt cylinder

- Improves reliability and reduces service points
- Well protected hydraulic hoses and couplers
- Mounts high on bucket to protect cylinder rod end

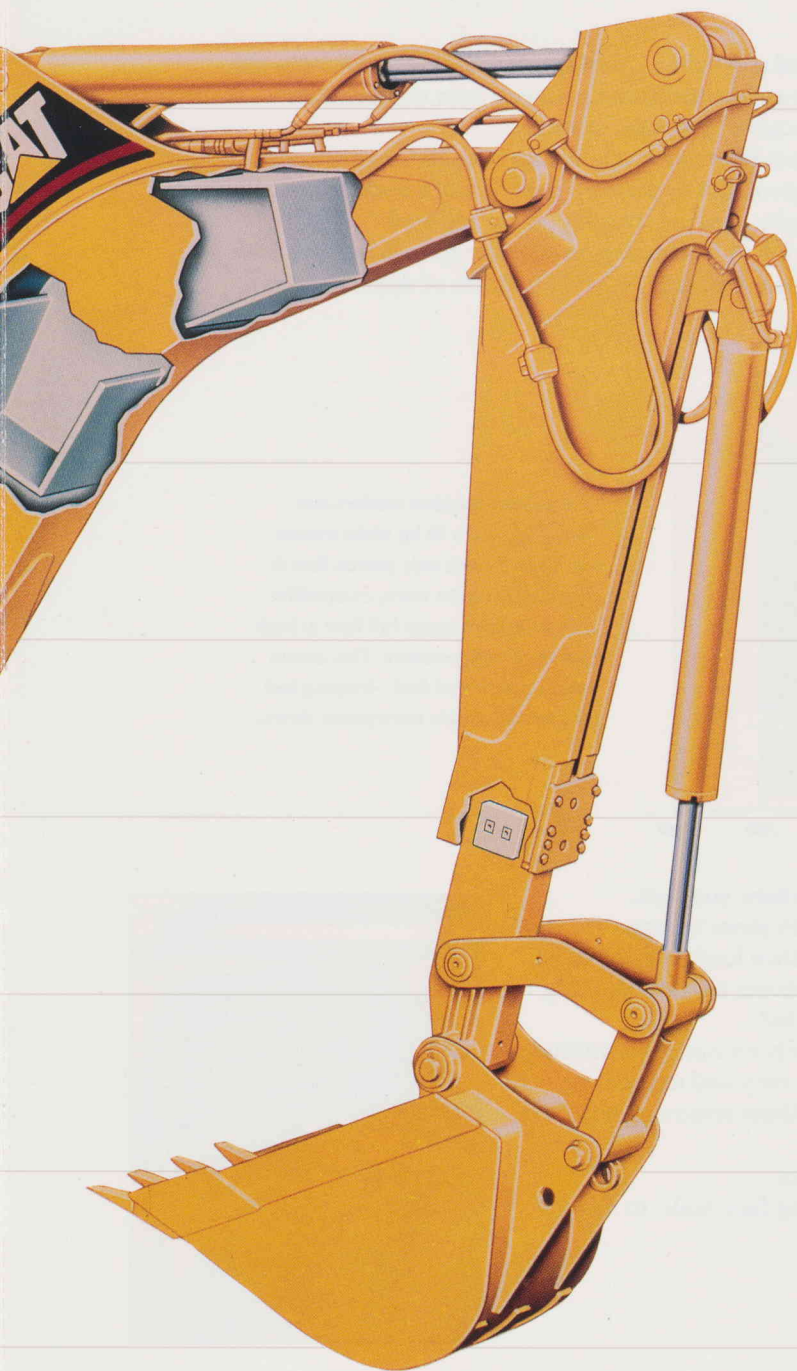




Inside And Out.







#### **Excavator-style backhoe**

- Greater lifting and digging forces
- Provides excellent visibility for narrow buckets
- Allows for easy digging over obstructions
- Fabricated construction allows easy weld-on of attachments/brackets
- Boom base hoses are well protected and easy to service
- Greater reach, dig depth and easier truck loading
- New E-stick wear pads can be shimmed or replaced in field

#### **Operator compartment**

- New 8-way adjustable, easy actuation, single-lever seat
- Easy-entry cab from either side
- Standard lighting array (2 lights front, 2 rear) provides excellent night visibility; new optional array doubles work lighting capability
- Front and rear extensions help keep operator dry and out of the sun
- New silicone window joints enhance visibility
- Improved air conditioning with better ventilation
- New cab interior with beverage holder
- New standard floor mat and fender covers (cab and OROPS models)

#### **Rear axle**

- Forged steel, induction-hardened axle shafts for drive line longevity
- Differential lock reduces wheel spin and increases productivity
- Hydraulically assisted brakes for low effort and precise control
- Self-adjusting brakes—no periodic adjustments needed

#### **CAT power shift transmission**

- Easy, on-the-go shifting between all gears, two- and four-wheel drive
- A single lever controls both direction and speed for improved operator efficiency
- Instant forward and reverse changes for reduced cycle times and increased productivity
- Modular, for easy servicing
- Four-wheel drive engaged on-the-go by the flip of a switch
- Torque converter links well-matched powertrain for optimum roading performance—even in high gear on steep grades

# Discover The Difference In Savings.

There's a "flip side" to getting more work done: It's spending less time, effort and money in the process. And here's where you can do it.

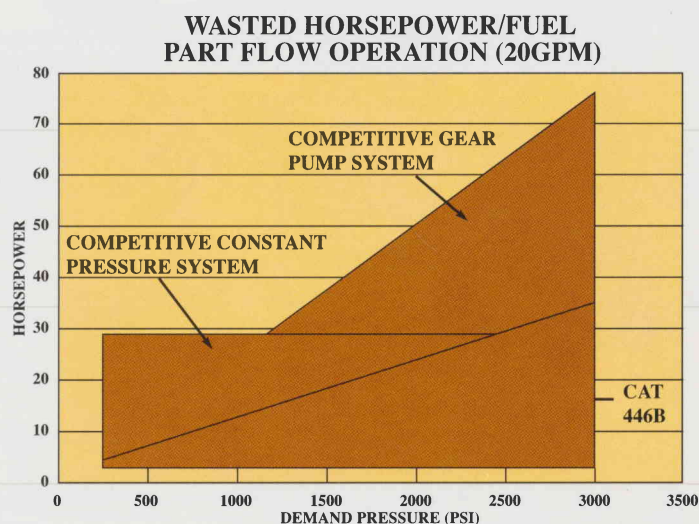
## Discover CAT power, engineered for today.

For one, you're running a CAT 3114T engine designed and built to meet specific B-Series requirements. It's an engine designed to improve fuel economy, reduce smoke and emission levels over competition.

It's an ideal working partner for the B-Series closed-center hydraulic system.

Unlike competitive, constant-flow or constant-pressure hydraulic systems that literally drain away horsepower (see chart), CAT load-sensing hydraulics automatically match power to work demands. And the variable-flow pump "free wheels" when loads are light, to avoid wasting power and fuel.

What's more, your engine can deliver full hydraulic forces while running at lower rpm. When you add all this up, it's enough to save half a gallon of fuel an hour. And that can add hundreds of dollars a year to your bottom line.



Competitive backhoe loaders can "burn" an extra 40 hp while trenching. Even though only partial flow is required to do the work, competitive systems always pump full flow at high rpm or at high pressure. This causes wasted power and fuel—keeping fuel bills up and usable horsepower down.

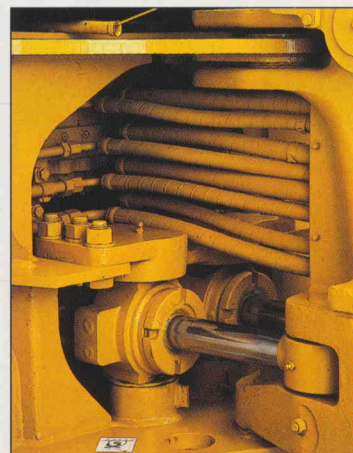
## Long life, low maintenance, better reliability. Everywhere you look.

Fact is, you get many features that help you save even more money. Like fewer hydraulic connections than conventional backhoe loaders in the most leak-free system in the business. And B-Series backhoe hoses are tucked neatly into the base of the boom. Easy to access. Nicely protected.

And the 446B's hose routings and XT-3 hoses virtually eliminate downtime from hose failure. (If one does need replacing, it's fast, easy and requires no special tools. And every 446B hose can be replaced without removing any other hose — so you're up-and-running fast.)

All filters are spin-on type for fast, mess-free changes.

Also, CAT couplings are equipped with rubber O-ring face seals, to further assure a virtually leak-free system.





# See More, Do More.

## Nothing tops an office with a view.

If you make your living on a backhoe loader, you'll love making it here.

First and foremost, you can see what you're doing. Easily, clearly. With a narrow boom that's 10¼ inches wide. And with new silicone window joints that enhance visibility.

Here, man and machine can truly work together, thanks to ergonomic considerations incorporated into everything from seat design to location of controls, almost effortless handling and more.

There's the quiet cab, air conditioned if you wish, with adjustable upper/lower window panels that work independently.

With cab or canopy, front and rear roof extensions provide improved rain protection.

The new 8-way, single-lever adjustable seat has a ball-bearing turntable for fast, smooth actuation. And attention to detail is evident everywhere, from exterior striping and color schemes to classy interior black and grey—even the easy-to-clean floor mat.

After all, you deserve no less.



Lights like never before: Double the standard lighting capability with new optional front and rear arrays on B-Series units, for added nighttime visibility where and when you need it most; and roof extensions provide improved rain protection and help protect lights.

From backhoe to loader or anywhere in-between, quick and easy single-lever seat adjustment is close at hand. New seat adjusts eight-ways and the ball-bearing turntable provides fast, smooth actuation.





# With Ease And Speed.

## **Strong, efficient hydraulic power.**

**CAT load-sensing hydraulics match power to work for you—without wasted fuel, engine power or typical wear.**

You don't have to work quite as hard when you work on a CAT backhoe loader. Nor do your engine, hydraulic pump or other system components.

Unlike competitive open-center systems that have to run full-tilt, full time, CAT closed-center hydraulics can "feel" when and where force is needed. And automatically deliver power on-demand to match that need.

## **Full forces at any engine speed.**

There's no delay—the power is instant—and you're never short-changed, because oil is already "poised" in the system, ready to respond with the flow and pressure needed, with no waste.

And there's no need to rev up the engine to reach that pressure; it doesn't have to run at full load. You get maximum lift and dig forces at any engine speed.

Other CAT advantages: Your oil stays fresher, longer; hydraulic pumps last longer than competitive gear-type designs.

## **Easy does it: smooth, sure control.**

Get your hands on a B-Series backhoe loader, however, and you'll see what "load sensing" *really* means. Not only will you have smooth, precise control, but more feedback that gives you a better feel for what's happening in the trench.

All this is also ideal when you set pipe or handle other loads, as well as trenching.

In short, if you want the best of both worlds—productivity and efficiency—CAT load-sensing hydraulics make great business sense.





# CAT Means Business On The Loader End

Step aboard a CAT B-Series backhoe loader and see for yourself.

Hit the job with more power and superior breakout; see how those hydraulics help you move smoother, too.

Enjoy the speed and ease of a power shift transmission that acts like it reads your mind.—And fast cycle times with a return-to-dig that does the thinking for you.

It's easy to keep an eye on the bucket, thanks to divergent loader arms—and a single tilt cylinder that also offers fewer service and wear points, with well protected cylinder hoses.

Truck loading, backfilling, fine grading—you name it—the loader end of this backhoe loader is all business, too.





# ...And In Many Other Different Ways.

## Bringing new meaning to 'versatility,' to expand your business options.

Backhoe buckets have been specially designed for more-efficient digging and dumping, beefed up to handle higher digging forces. Bucket sizes from 18 in. to 60 in. (460 mm to 1525 mm)—and including heavy duty, high capacity and extreme service—expand the industry's broadest line of bucket options.

You can also choose from a variety of tooth and cutting edge options, to match your business needs.

On the loader end, you can choose from a general purpose or 1.5 cu. yd. multi-purpose bucket.

But these are merely the beginning.

## Over 150 buckets, tools and attachments.

A full range of attachments for both your backhoe and loader is also available through your CAT dealer ...to help you handle many more jobs—easily, quickly and profitably.

Pallet forks, brooms, blades, hydraulic hammers, asphalt cutters, shears, post hole augers, grapples, sweepers, compactors—just some of the choices you have.

Put a Quick Coupler at each end, and you can switch most backhoe or loader attachments without leaving your seat!

And in those cases where extra hydraulics are required, the Caterpillar universal lines group, auxiliary valves and controls—with advice from your CAT dealer—provide an easy answer.

It all adds up to new opportunities for new business profits for you.



Add a Quick Coupler and you can switch most attachments without leaving the operator's seat.



Sweep streets, parking lots and more when your loader bucket's replaced with a hydraulic broom—complete with water system.



Wrist action with a CAT swinger coupler lets you handle slope work with ease and speed.



Break up concrete and handle other demolition work with a hydraulic hammer.



Frozen ground? Rocky soil? Put powerful CAT hydraulics behind a ripper bucket—and get the job done.



# 446B BACKHOE LOADER

Gross Power  
**76.8 kW/103 HP**

Flywheel Power  
**70.8 kW/95 HP**

Operating Weight  
**8892 kg/19,603 lb**

Backhoe digging depth up to  
**6528 mm/21'5"**

✓ **New Feature effective  
with Serial No. 5BL00500**



## Engine

Gross power at 2200 RPM ..... **76.8 kW/103 HP**  
Net power at 2200 RPM (SAE J1349) ..... **70.8 kW/95 HP**

*Ratings of Caterpillar machine engines are based on standard air conditions of 25°C/77°F and 99 kPa/29.32 in Hg dry barometer. Power is based on using 35° API gravity fuel having an LHV of 42,780 kJ/kg (18,390 Btu/lb) when used at 30°C/86°F (ref. a density of 838.9 g/L (7.001 lb/U.S. gal)). Net power advertised is the power available at the flywheel when the engine is equipped with fan, air cleaner, muffler, and alternator. No derating is required up to 2286 m/7500 ft altitude.*

The following ratings apply at 2200 RPM when tested under the specified standard conditions for the specified standard:

NET POWER	.....kW	HP	PS
Caterpillar	<b>71.5</b>	96.0	—
EEC 80/1269	<b>71.5</b>	96.0	—
ISO 9249	<b>71.5</b>	96.0	—
SAE J1349	<b>70.8</b>	95.0	—
DIN 70020	—	—	99.4

Caterpillar four-stroke cycle, 3114 turbocharged diesel engine with four cylinders, **105 mm/4.13"** bore, **127 mm/5.0"** stroke and **4.40 liter/268 cu. in.** displacement.

Direct-injection fuel system with an individual, adjustment-free unit injector for each cylinder. Cam-turned and tapered, aluminum-alloy pistons have three rings each and are oil cooled. Connecting rods are tapered. Uniflow cylinder head design eliminates crossover manifold piping. Internal fuel, oil and water passages used instead of external lines. Deep-skirted, cast cylinder block. Induction-hardened, forged crankshaft. Steel camshaft is fully journaled at every block bulkhead. Oscillating roller followers and short pushrods for precision engine timing. Two alloy-steel valves per cylinder.

Direct-electric, 12-volt starting system with a 55-amp alternator and two 12-volt, 100-amp hour batteries.



## Brakes

(Meet SAE J1473 OCT90 and ISO 3450-1985.)

**Service** — Two fully enclosed, hydraulically actuated, self-energizing, self adjusting, oil-disc brakes on final drive input shaft and requires no routine maintenance. Foot-operated brake pedals can be interlocked for roading or used independently in working applications.

**Parking-secondary** — Independent system from the service brakes. Caliper-type disc brake on the input shaft to rear axle. Brake assembly is mechanically engaged through hand lever in operator's compartment.



## ROPS

ROPS canopy is standard.

ROPS (Rollover Protective Structure) offered by Caterpillar for this machine meets ROPS criteria SAE J394, SAE J1040 APR88 and ISO 3471-1986.



## Cab

When properly installed and maintained, cab offered by Caterpillar, when tested with doors and windows closed as per work cycle procedures specified in ANSI/SAE J1166 MAY90, results in an operator sound exposure  $L_{eq}$  (equivalent sound pressure level) of 80.5 dB (A).

This operator A-weighted sound exposure level can be used in conjunction with OSHA, MSHA and EEC Occupational Noise Exposure Criteria. Also, when tested as per the static procedures of 86/662/EEC and dynamic procedures of 89/514EEC, the respective operator sound pressure levels are 81.0 and 81.0 dB (A).



## Transmission

Power shift transmission with four speeds forward and reverse. Constant-mesh gears permit on-the-go shifting between all gears — up or down. Conveniently placed, hand-operated lever allows instant speed and direction changes with power hydraulic clutches. Neutral start provision prevents starting machine while transmission is in gear.

### Transmission Disconnect

Hand-operated power disconnect — no clutch — for faster cycle times.

### Torque Converter

Single stage. 2.09:1 stall ratio.

### Travel Speeds

Travel speeds, two-wheel drive backhoe loader, full throttle, equipped with 21L-24 rear tires.

		1st	2nd	3rd	4th
Forward	Km/H	<b>6.6</b>	<b>12.1</b>	<b>21.7</b>	<b>33.0</b>
	MPH	4.1	7.5	13.5	20.5
Reverse	Km/H	<b>7.3</b>	<b>13.4</b>	<b>24.1</b>	<b>36.5</b>
	MPH	4.5	8.3	15.0	22.7



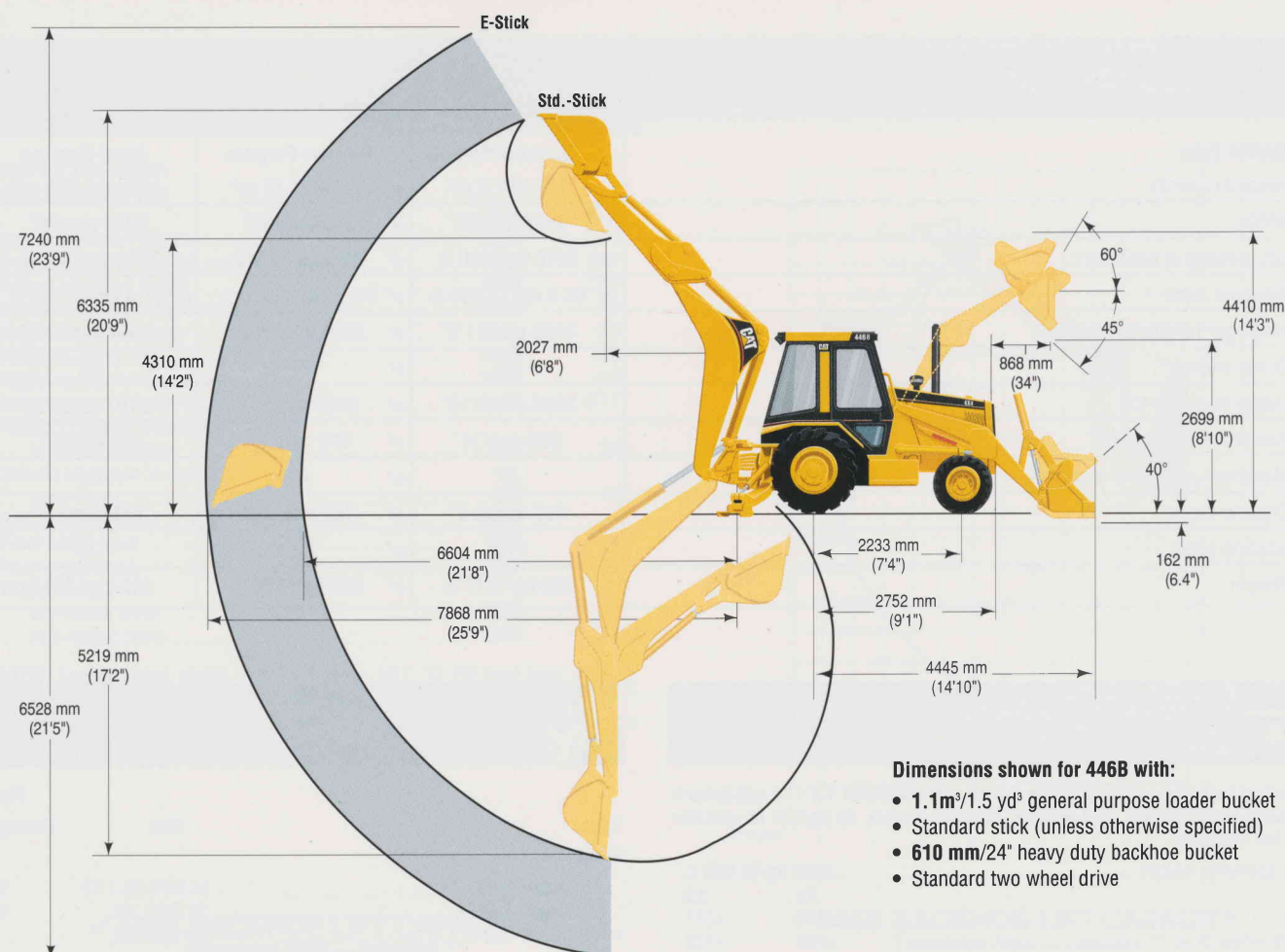
## Hydraulic system

Variable-flow, load-sensing, pressure-compensating design provides efficient use of power.

Type ..... Closed-center, load-sensing  
Pump type ..... Variable-flow, axial-piston  
Pump capacity ..... **178 l/min/47 gpm** at 2200 RPM  
System pressure ..... **22 400 kPa/224 bar/3250 psi**



## TECHNICAL DATA



### Backhoe Dimensions and Performance

	Standard Stick	Extendable stick	
		Retracted	Extended
Digging depth — SAE (max)	5219 mm/17'2"	5182 mm/17'	6528 mm/21'5"
610 mm/2' flat bottom	5173 mm/17'	5134 mm/16'10"	6479 mm/21'3"
Overall reach from rear axle center line at ground line	7866 mm/25'10"	7825 mm/25'8"	9130 mm/29'11"
Overall reach from swing pivot at groundline	6604 mm/21'8"	6563 mm/21'6"	7868 mm/25'9"
Maximum operating height — fully raised	6335 mm/20'9"	6298 mm/20'8"	7240 mm/23'9"
Loading height	4310 mm/14'2"	4205 mm/13'10"	4894 mm/16'1"
Loading reach	2027 mm/6'8"	2070 mm/6'9"	3261 mm/10'8"
Swing arc	180°	180°	180°
Bucket rotation Position #1 and #2	169°	163°	163°
Stabilizer spread — operating position	4084 mm/13'5"	4084 mm/13'5"	4084 mm/13'5"
Stabilizer spread — transport position	2405 mm/7'11"	2405 mm/7'11"	2405 mm/7'11"
Digging force, bucket cylinder	✓ 67.6 kN/15,200 lb	✓ 67.4 kN/15,150 lb	✓ 67.4 kN/15,150 lb
Digging force, dipper cylinder	✓ 48.0 kN/10,800 lb	✓ 49.8 kN/11,200 lb	✓ 34.8 kN/7830 lb
Leveling angle (max. slope on which backhoe will make vertical cut)	13°	13°	13°



## TECHNICAL DATA

### Loader Dimensions (SAE J742c)

### Loader Bucket Capacities (SAE J742)

Bucket Type	General Purpose	General Purpose	Multi-Purpose
Heaped capacity	1.1 m <sup>3</sup> /1.5 yd <sup>3</sup>	✓ 1.3 m <sup>3</sup> /1.75 yd <sup>3</sup>	1.05m <sup>3</sup> /1.375 yd <sup>3</sup>
Width	2434 mm/96"	✓ 2434mm/96"	2434 mm/96"
Lift capacity at full height	✓ 3970 kg/8760 lb	✓ 3905 kg/8610 lb	✓ 3790 kg/8350 lb
Breakout force	✓ 56.0 kN/12,600 lb	✓ 51.7 kN/11,610 lb	✓ 57.4 kN/12,900 lb
Hinge pin height (full height)	3490 mm/11'5"	✓ 3490 mm/11'5"	3490 mm/11'5"
Dump angle	45°	✓ 45°	45°
Dump height at 45°	2699 mm/8'10"	✓ 2657 mm/8'9"	2731 mm/9'0"
Reach at full height/45°	868 mm/34"	✓ 910 mm/36"	868 mm/34"
Maximum rollback at ground	40°	✓ 40°	40°
Digging depth	162 mm/6.4"	✓ 162 mm/6.4"	143 mm/5.6"
Grading angle	115°	✓ 115°	115°
Weight	553 kg/1217 lb	✓ 608 kg/1338 lb	849 kg/1868 lb

### Weights

Standard two-wheel drive backhoe loader with additional 1.1 /1.5 yd<sup>3</sup> general purpose loader bucket, 610 mm/24" backhoe bucket, 80 kg/176 lb operator and full fuel tank.

SAE operating weight	8892 kg/19,603 lb	
	Kg	Lb
Cab	+234	+515
Front-wheel drive	+196	+432
Extendable stick*	+293	+645
Multi-purpose bucket	+295	+651
✓ 1.3m <sup>3</sup> /1.75yd <sup>3</sup> General purpose bucket	+55	+120

\* Excludes counterweight



### Tires

Type	Size	Ply Rating
<b>Front</b>		
Standard 2wd	14.5/75-16.1 F3	10
Standard 4wd	12.5-20. R4	10
✓ Optional 4wd	15-19.5 SGL	8
<b>Rear</b>		
✓ Standard 2wd	21L-24, R4, IT525	12
✓ Standard 4wd	21L-24, R4, IT525	12

### Steering

Turning radius, two-wheel drive, wheels not braked	4204 mm/13'10"
Type	Front wheel
Power	Hydrostatic
Cylinder	one double-acting, bore 82.55 mm/3.25" stroke 281 mm/11.06", rod 53.98 mm/2.13"

Supplemental steering option is available to provide full steering capability in the event of a steering power source failure.



### Axles

#### Axle rating, two-wheel drive

Front axle rating	
SAE J43	9630 kg/21,230 lb

Rear axle rating	
SAE J43	9160 kg/20,194 lb

#### Rear Axle

Heavy duty, fixed axle with inboard planetary reduction and differential lock.

**Front Axle** (with standard two-wheel drive or optional four-wheel drive). Trunnion-mounted, cast axle with 11° oscillation each direction from center line. Switch on instrument panel engages four-wheel drive on-the-move, in any gear, forward or reverse.

Drive from differential to front wheels via planetary reduction in each wheel. On-the-go shifting — up or down, forward or reverse — between all gears is retained in four-wheel drive.

### Service Refill Capacities

	Liters	U.S. Gallons
Cooling system	30	7.9
Fuel tank	125	33.0
Engine oil, with filter	11	2.9
Transmission	26	6.9
Rear axle	31	8.2
Hydraulic reservoir	57	15.1
Hydraulic system	154	41.0
Four-wheel drive front axle	9.30	2.5
Front planetary (each, 4wd only)	0.80	0.21



# TECHNICAL DATA



## Machine Dimensions

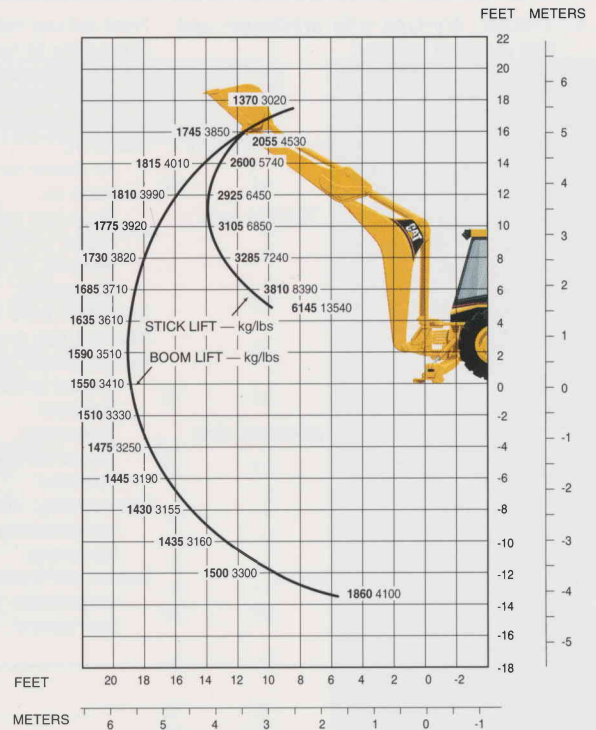
(SAE J49 and J732c)

Machine Dimensions  
(SAE J49 and J732c)

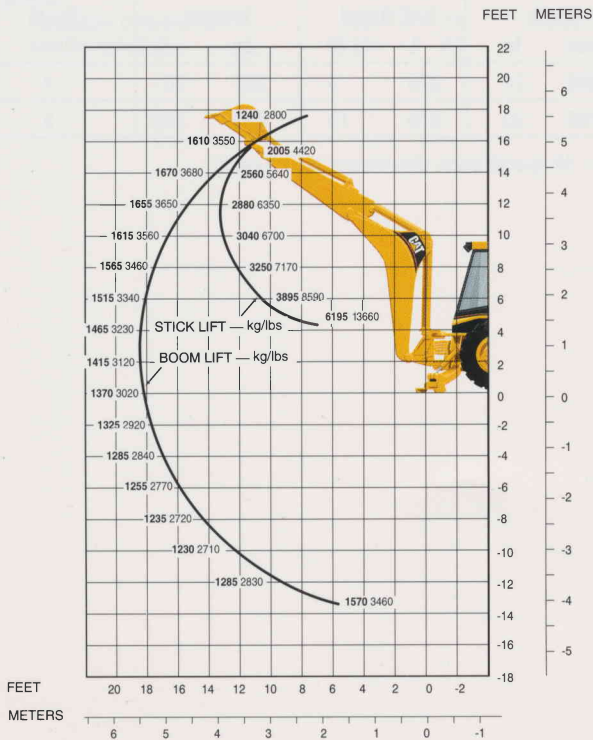
	mm	ft-in
Overall transport length.....	7954	26'1"
Overall length (loader on ground).....	7922	26'0"
Overall transport height.....	4193	13'9"
Overall width with loader bucket.....	2434	8'0"
Height to top of canopy .....	2864	9'5"
Height to top of cab.....	2864	9'5"
Height to top of exhaust stack.....	2960	9'9"
Height to top of steering wheel.....	2111	6'11"
Height to loader hinge pin, transport position.....	465	18"
Ground clearance to machine main frame.....	332	13"
Rear axle centerline to front grill .....	2752	9'
Front wheel tread.....	1970	6'6"
Rear wheel tread.....	1800	5'11"
Wheel base, two-wheel drive.....	2233	7'4"
four-wheel drive .....	2233	7'4"

**NOTE:** Specifications shown with 14.5/75 — 16.1, 10 PR front tires, 21L-24, 12PR rear tires, ROPS canopy, 5219 mm/17'2" backhoe with 610 mm/24" trenching bucket, loader with 2434 mm/96", 1.1 m³/1.5 yd³ General Purpose bucket and standard equipment unless otherwise specified.

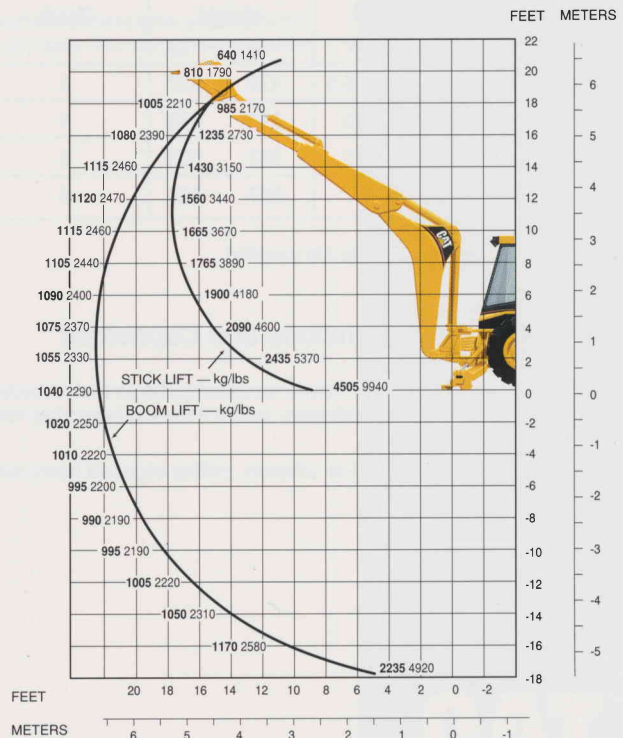
## ✓ 446B BACKHOE LIFT CAPACITY Standard Stick\*



## ✓ 446B BACKHOE LIFT CAPACITY Extendable Stick — Retracted \*\*



## ✓ 446B BACKHOE LIFT CAPACITY Extendable Stick — Extended \*\*



**NOTE:** Lift capacities are the over end values according to SAE J31.

\*Standard stick was measured using a 455 kg/1000 lb counterweight.

\*\*Extendable stick was measured using a 680 kg/1500 lb counterweight



## Standard Equipment

NOTE: Standard and optional equipment may vary. Consult your Caterpillar dealer for specifics.

Air cleaner, dry-type with precleaner and filter condition indicator.  
 Alternator, 55-amp, 12-volt.  
 Antifreeze (to -20°F).  
 Audible system fault alarm.  
 Backhoe, 5219 mm/17'2" center-pivot excavator style two-lever control.  
 Backhoe position footrest.  
 Batteries (2), maintenance free, 700 CCA each.  
 Boom transport lock.  
 Brace, lift cylinder.  
 Brakes, oil-disc.  
 Bucket level indicator.  
 Cat's XT-3 Hose  
 Differential lock.  
 Driveline parking brake.  
 Engine enclosure.  
 Engine, 3114 T diesel with 12-volt electric start.  
 Fan, suction.  
 Fenders, rear.  
 Fender cover.  
 Flashing hazard/signal lights.  
 Floor mat.  
 Front axle pivot, 140 mm/5.5" trunion.  
 Front grill, impact absorbing.

Front and rear Halogen working lights (4).  
 Ground line fill fuel tank with 33 gallon capacity.  
 Grouser type stabilizer shoes.  
 Headlights-2 front/2 rear.  
 Hydraulic reservoir and cooler.  
 Indicators:  
 Air cleaner service.  
 Brake on.  
 Clock hour meter.  
 Engine coolant.  
 Hydraulic oil level sight gauge.  
 Oil pressure.  
 Instrument panel lights.  
 Key start/stop system with auxiliary position.  
 Lighted gauges group:  
 Coolant temperature.  
 Fuel level.  
 Tachometer.  
 Torque converter oil temperature.  
 Voltmeter.  
 Load-sensing, variable-flow pressure-compensating system with piston-type pump.  
 Loader, self-leveling with Return-to-Dig and transmission disconnect switch on single-lever control.

Mirror, rearview.  
 O-ring face seal hydraulic fittings.  
 Power steering, hydrostatic.  
 ROPS canopy, with dual access.  
 Seat, vinyl, suspension, fully adjustable with armrests.  
 Seat belt, retractable (51 mm/2").  
 Spin-on fuel, engine oil, transmission oil filters.  
 Storage compartment, internal.  
 Stop and tail lights (2).  
 Swing transport lock.  
 Tires: Front 14.5/75-16.1, (10 PR F3)  
 Rear 21L x 24, (12 PR R4).  
 Tool box, external.  
 Torque converter.  
 Throttles, hand and foot.  
 Transmission, four-speed power shift — single lever twist grip.  
 Transmission neutralizer switch.  
 Transport tie-down points.  
 Vandalism protection.  
 Warning horn, front, electric.  
 Water separator.



## Heavy Duty Buckets

Width		Capacities		Weight		No. of Teeth
mm	in	SAE Rated L	ft³	kg	lb	
457	18	190	6.5	178	392	3
610	24	280	10	216	476	4
762	30	380	13	237	523	5
914	36	480	17	267	589	6

Note: All specification dimensions are rounded.

## Backhoe Bucket Dimensions and Capacities

(SAE J296)

**Heavy Duty** — Heavy duty buckets include reinforced plates on back of bucket and at torque tube, weld-on tooth adapters, cutting edge and heavy duty long tooth tips.

**Extreme Service** — Includes weld-on adapters, cutting edge and heavy duty long tooth tips.



## Extreme Service Buckets

Width		Capacities		Weight		No. of Teeth
mm	in	SAE Rated L	ft³	kg	lb	
600	24	270	9	227	501	4
760	30	370	13	249	549	5

Note: All specification dimensions are rounded.



# TECHNICAL DATA

# 446B BACKHOE LOADER

## ✓Optional Equipment

(with approximate change in operating weight)

	Kg	Lb
Alternator, 90 amp .....	7.7	17
Backhoe Controls:		
Case Pattern (Std. & E-stick) ..	5.4	12
Excavator pattern .....	2.7	6
Dyna-hoe pattern .....	5.4	12
Ford pattern .....	5.4	12
Buckets, Backhoe:		
18" Heavy Duty .....	178	392
24" Heavy Duty .....	216	476
30" Heavy Duty .....	237	523
36" Heavy Duty .....	267	589
24" Extreme Service .....	227	501
30" Extreme Service .....	249	549
Buckets, Loader:		
1.5 cu/yd General purpose .....	553	1217
1.75 cu/yd General purpose ...	608	1338
Multi-purpose .....	805	1775
Cab, ROPS (includes heater, defroster and pressurizer) .....	234	515
Air conditioning .....	46	101
Counterweight 1000 lbs .....	455	1000
Counterweight 1500 lbs .....	682	1500
*Engine Coolant Heater (750 watt, 120 volt) .....	849	1868
*Fan, Operator's Compartment ....	2	4
Four-wheel drive .....	196	432
Tires: 12.5-20 R4 10PR .....		200
15-19.5 SSGL 8PR .....		200
Guards:		
*Stabilizer cylinder .....	35	78
4wd Driveshaft .....	36	80

	Kg	Lb
Hydraulic arrangements:		
Backhoe, Auxiliary Valve for Std. stick		5
Backhoe, Auxiliary Valve for E-Stick		5
Low-Flow Hydraulic Lines (for compactors and low flow)		20
Universal Lines (for hammer and high flow)		25
Loader, Auxiliary Valve (for MP bucket) .....	27	60
Lights, Four additional requires 90 amp alternator) .....	2.7	6
Mirrors, outside mounted .....	12	27
Power receptacle, 12 volt .....	1	2
Radio installation kit .....	3	7
Rotating beacon .....	2	5
Fixed mounted .....	5	11
Magnetic Mounted .....	5	11
Seat, fabric, suspension .....	15	33
Seat Belt:		
3" Retractable .....	0	0
Stabilizer pads		
Street .....	37	82
Reversible .....	68	150
Starting aid, ether .....	1	2
Steering, Supplemental .....	20	45
Stick-Extendable (without counterweight) .....	293	645

**NOTE:** All specification dimensions are rounded.  
Refer to local dealer for more field installed  
attachments.



# Let's Do Business.

Among many CAT features designed to help your business, none is more proven than your Caterpillar dealer.

Model selection and purchase, equipment rental or financing options are only the beginning.

Even more important, your CAT dealer can partner with you to devise the most cost-effective maintenance program. He can provide fast, off-the-shelf parts availability backed by Caterpillar's worldwide parts network. Fact is, records show that 98.5% of all CAT parts can be on-hand within 24 hours! Your dealer can also help identify and prevent potential problems before they happen.

In short, your dealer can help you build your business in ways no one else can.

World class support. Your business can't afford anything less!

*Discover  
The Difference*

Effective with Serial No. 5BL00500

**CATERPILLAR®**

Materials and specifications are subject to change without notice.

Featured machines may include additional equipment applicable only for special applications.

See your authorized Caterpillar dealer for available options.

AEHQ3817-01 (5-94)  
(Replaces AEHQ3817)

Printed In U.S.A.  
© 1994 Caterpillar