

279C Series 2 and 289C Series 2 Compact Track Loaders Specifications

Engine

| | | |
|----------------------------|--------------|---------------------|
| Engine Model | Cat C3.4 DIT | |
| Net Power (SAE J1349) | 54 kW | 73 hp |
| Gross Power (SAE J1995) | 55 kW | 74 hp |
| Displacement | 3.3 L | 201 in ³ |
| Stroke | 120 mm | 4.7 in |
| Bore | 94 mm | 3.7 in |

Weights

| | | |
|------------------|---------|-----------|
| Operating Weight | | |
| 279C Series 2 | 4475 kg | 9,865 lb |
| 289C Series 2 | 4687 kg | 10,332 lb |

Operating Specifications

| | | |
|--|---------------------|-----------------------|
| Rated Operating Capacity (50% Tipping Load) | | |
| 279C Series 2 | 1383 kg | 3,050 lb |
| 289C Series 2 | 1656 kg | 3,650 lb |
| Rated Operating Capacity (35% Tipping Load) | | |
| 279C Series 2 | 968 kg | 2,135 lb |
| 289C Series 2 | 1159 kg | 2,555 lb |
| Internal Counterweight Increases ROC by | 57 kg | 125 lb |
| External Counterweight Increases ROC by | 102 kg | 225 lb |
| Tipping Load | | |
| 279C Series 2 | 2767 kg | 6,100 lb |
| 289C Series 2 | 3311 kg | 7,300 lb |
| Breakout Force, Tilt Cylinder | 3315 kg | 7,308 lb |
| Ground Contact Area | 1.49 m ² | 2,303 in ² |
| Ground Pressure | | |
| 279C Series 2 | 29.5 kPa | 4.3 psi |
| 289C Series 2 | 30.9 kPa | 4.5 psi |

Hydraulic System

| | | |
|--------------------------------|---------------|------------|
| Hydraulic Flow | Standard | |
| Loader Hydraulic Pressure | 23 000 kPa | 3,335 psi |
| Loader Hydraulic Flow | 84 L/min | 22 gal/min |
| Hydraulic Power | 31.9 kW | 42.8 hp |
| Hydraulic Flow | High Flow XPS | |
| Max. Loader Hydraulic Pressure | 28 000 kPa | 4,061 psi |
| Max. Loader Hydraulic Flow | 125 L/min | 33 gal/min |

Cab

| | | |
|---------------|---|--|
| ROPS | SAE J1040 MAY94, ISO 3471:1994 | |
| FOPS | SAE J1043 SEPT87, ISO 3449:1992 Level I | |
| FOPS Level II | SAE J231 JAN81, ISO 3449:1992 Level II | |

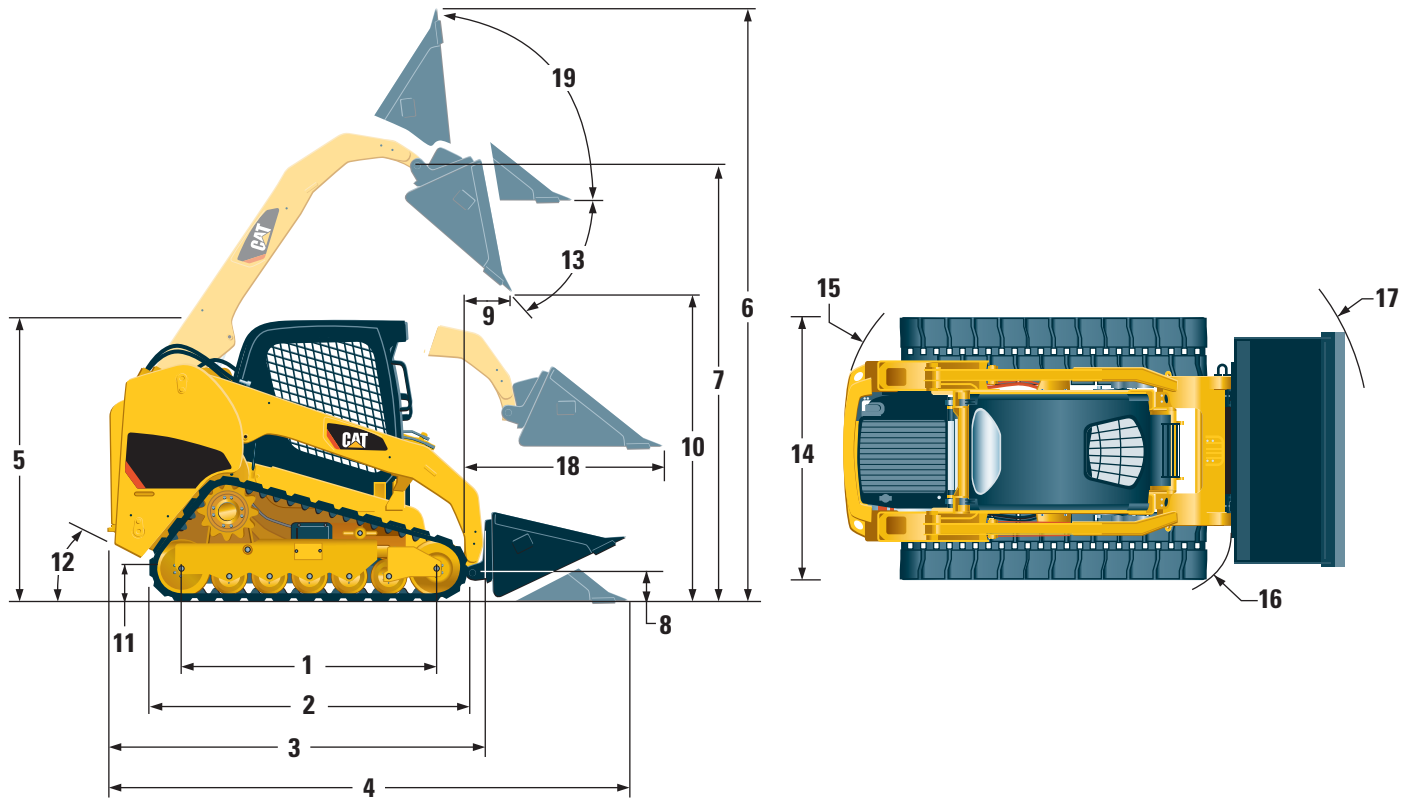
Power Train

| | | |
|---|-----------|---------|
| Travel Speed (Forward or Reverse) | 8.1 km/h | 5.0 mph |
| Travel Speed – 2-Speed (Forward or Reverse) | 13.6 km/h | 8.5 mph |

Service Refill Capacities

| | | |
|------------------|------|---------|
| Cooling System | 14 L | 3.7 gal |
| Engine Crankcase | 10 L | 2.6 gal |
| Fuel Tank | 98 L | 26 gal |
| Hydraulic System | 57 L | 15 gal |
| Hydraulic Tank | 42 L | 11 gal |

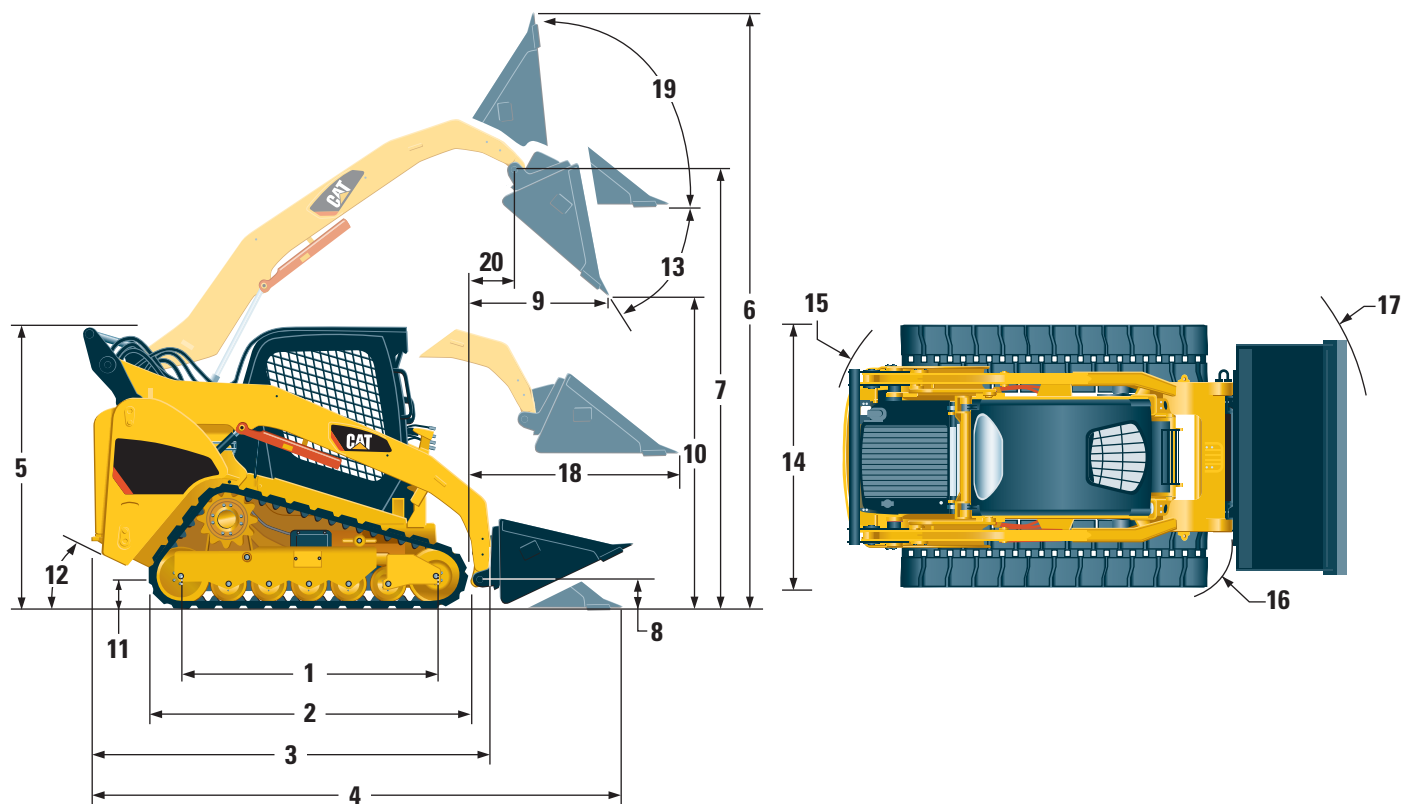
Dimensions



| 279C Series 2 | | |
|---------------|---|------------------|
| 1 | Length of Track on Ground | 1625 mm 64 in |
| 2 | Overall Length of Track | 2129 mm 83.8 in |
| 3 | Length w/o Bucket | 2960 mm 116.5 in |
| 4 | Length w/Bucket on Ground | 3679 mm 144.8 in |
| 5 | Height to Top of Cab | 2117 mm 83.3 in |
| 6 | Max. Overall Height | 4005 mm 157.7 in |
| 7 | Bucket Pin Height at Max. Lift | 3128 mm 123.2 in |
| 8 | Bucket Pin Height at Carry Position | 195 mm 7.7 in |
| 9 | Reach at Max. Lift and Dump | 594 mm 23.4 in |
| 10 | Clearance at Max. Lift and Dump | 2427 mm 95.6 in |
| 11 | Ground Clearance | 231 mm 9.1 in |
| 12 | Departure Angle | 44° |
| 13 | Maximum Dump Angle | 40° |
| 14 | Vehicle Width | 1981 mm 78.0 in |
| 15 | Turning Radius from Center – Machine Rear | 1726 mm 69.4 in |
| 16 | Turning Radius from Center – Coupler | 1458 mm 57.4 in |
| 17 | Turning Radius from Center – Bucket | 2238 mm 88.1 in |
| 18 | Max. Reach w/Arms Parallel to Ground | 1387 mm 54.6 in |
| 19 | Rack Back Angle at Max. Height | 85° |

279C Series 2 and 289C Series 2 Compact Track Loaders Specifications

Dimensions



| 289C Series 2 | | |
|--|---------|----------|
| 1 Length of Track on Ground | 1625 mm | 64 in |
| 2 Overall Length of Track | 2129 mm | 83.8 in |
| 3 Length w/o Bucket | 2960 mm | 116.5 in |
| 4 Length w/Bucket on Ground | 3679 mm | 144.8 in |
| 5 Height to Top of Cab | 2117 mm | 83.3 in |
| 6 Max. Overall Height | 4081 mm | 160.7 in |
| 7 Bucket Pin Height at Max. Lift | 3239 mm | 127.5 in |
| 8 Bucket Pin Height at Carry Position | 195 mm | 7.7 in |
| 9 Reach at Max. Lift and Dump | 781 mm | 30.7 in |
| 10 Clearance at Max. Lift and Dump | 2456 mm | 96.7 in |
| 11 Ground Clearance | 231 mm | 9.1 in |
| 12 Departure Angle | 44° | |
| 13 Maximum Dump Angle | 50° | |
| 14 Vehicle Width | 1981 mm | 78.0 in |
| 15 Turning Radius from Center – Machine Rear | 1762 mm | 69.4 in |
| 16 Turning Radius from Center – Coupler | 1458 mm | 57.4 in |
| 17 Turning Radius from Center – Bucket | 2238 mm | 88.1 in |
| 18 Max. Reach w/Arms Parallel to Ground | 1282 mm | 50.5 in |
| 19 Rack Back Angle at Max. Height | 85° | |
| 20 Bucket Pin Reach at Max. Lift | 371 mm | 14.6 in |

279C Series 2 and 289C Series 2 Standard Equipment

Standard equipment may vary. Consult your Cat dealer for details.

ELECTRICAL

12 volt Electrical System
90 ampere Alternator
Automatic Glow Plug Activation
Ignition Key Start/Stop Switch
Lights: Gauge backlighting, two rear tail lights, two rear halogen working lights, two adjustable front halogen lights, dome light
Backup Alarm
Heavy Duty Battery, 880 CCA

OPERATOR ENVIRONMENT

Gauges: Fuel level, hour meter
Operator Warning System Indicators:
Air filter restriction, alternator output, armrest raised/operator out of seat, engine coolant temperature, engine oil pressure, glow plug activation, hydraulic filter restriction, hydraulic oil temperature, parking brake engaged
Vinyl seat, mechanical suspension
Fold-in Ergonomic Contoured Armrest
Control Interlock System, when operator leaves seat or armrest raised: Hydraulic system disables, hydrostatic transmission disables, parking brake engages
ROPS Cab, Open, Tilt Up
FOPS, Level I
Top and Rear Windows
Headliner, Deluxe
Floor Mat
Interior Rear View Mirror
12 volt Electric Socket
Horn

POWER TRAIN

Cat C3.4 DIT Diesel Engine (meets U.S. EPA Tier 4 Interim/EU Stage IIIA emission standards)
Air Cleaner, Dual Element, Radial Seal
S•O•SSM Sampling Valve, Hydraulic Oil Filters, Spin-on, Hydraulic
Filters, Bayonet-type, Fuel and Water Separator
Tilt Up Radiator/Hydraulic Oil Cooler
Spring Applied, Hydraulically Released, Wet Multi Disc Parking Brake
Hydrostatic Transmission, 2 Speed

OTHER

Suspension, Torsion Axles
Engine Enclosure, Lockable
Extended Life Antifreeze, -37° C (-34° F)
Machine Tie Down Points (4)
Support, Lift Arm
Hydraulic Oil Level Sight Gauge
Radiator Coolant Level Sight Gauge
Radiator, Expansion Bottle
Cat ToughGuardTM Hose
Auxiliary, Hydraulics, Continuous Flow
Heavy Duty, Flat Faced Quick Disconnects
Split D-Ring to Route Work Tool Hoses
Along Side of Left Lift Arm
Electrical Outlet, Beacon
Belly Pan Cleanout
Variable Speed Demand Fan

MANDATORY EQUIPMENT

Hydraulics, Standard or High Flow XPS
Quick Coupler, Mechanical or Hydraulic
Seat Belt, 50 mm (2 in) or 75 mm (3 in)

Comfort Package

(must select one of the following):

- Open ROPS (C1): Radio Ready, Suspension Seat (no heater or door)
- Enclosed ROPS with Heat (C2): Cup Holder, Radio Ready, Seat (choice of Suspension or Air Ride), Heater and Defroster, Side Windows, Door (either Glass or Polycarbonate)
- Enclosed ROPS with A/C (C3): Features of C2 Package plus Air Conditioner

Performance Package

(must select one of the following):

- TL1: Two Speed
- TL2: Two Speed, Self Level
- TL3: Two Speed, Self Level, Advanced Machine Information and Control System (AMICS)

279C Series 2 and 289C Series 2 Optional Equipment

Optional equipment may vary. Consult your Cat dealer for details.

Counterweight
Beacon, Rotating
Engine Block Heater – 120V
Oil, Hydraulic, Cold Operation
Paint, Custom
AM/FM/Weather Band Radio with CD Player and Auxiliary Input Jack
Triple Flange Idler with 400 mm (15.7 in) Track