

# T86 Compact Track Loader



The Bobcat® T86 is the most powerful compact track loader we've ever built, delivering more usable engine and hydraulic horsepower than ever before.

- Optional high-flow and super-flow hydraulics
- 105-hp, Tier 4 engine
- Leading attachment versatility
- Premium Power Performance system for greater productivity
- Premium comfort

**Pay as low as 0% financing for up to 36 months\* or choose rebates up to \$3,500 USD\*/\$4,600 CAD\* on Bobcat T86 compact track loaders.**

[Build & Quote](#)

[Contact Dealer](#)

[View Offers](#)

[Find Dealer](#)

[Download Brochure](#)



## T86 Overview

- The Bobcat T86 compact track loader features an optimized weight-to-horsepower ratio that ranks this vertical lift machine among the industry's most powerful, maneuverable, efficient and productive in its size class.
- And only Bobcat offers a compact track loader that delivers three hydraulic flow options - standard, high and super flow - in one machine, setting a new industry benchmark in performance and attachment versatility.
- Premium Power Performance further sets these machines apart. Designed to boost productivity, the power management system improves engine-to-workgroup efficiency, distributing more power where and when it's needed during multi-tasking operations. Smoother, faster control - with maximum power where and when you need it most - means more heavy-duty work done per day.

Introducing Bigger Done Better - Bobcat R-Series T86 & S86 Compact Loaders



## T86 Specs & Compare

### T86 Key Specifications

Rated Operating Capacity (ISO)	1724 kg
Operating Weight	5621 kg
Ground Pressure (Rubber)	0.33 bar

Auxiliary Std Flow	89.3 l/min
Auxiliary High Flow	138.5 l/min
Joystick Control	Standard

### Engine

Emissions Tier (EPA)	Tier 4
Engine Cooling	Liquid
Engine Fuel	Diesel
Horsepower	78.3 kW
Turbocharged Engine	yes

### Performance

Rated Operating Capacity (ISO)	1724 kg
Rated Operating Capacity 200 lb. Counterweight	1792 kg
Rated Operating Capacity 300 lb. Counterweight	1826 kg
Rated Operating Capacity 400 lb. Counterweight	1860 kg
Rated Operating Capacity with Torsion	1678 kg
Operating Capacity (50% of Tip)	2463 kg
Tipping Load	4925 kg
Operating Weight	5621 kg
Travel Speed	8.7 km/h
Travel Speed (2-speed option)	16.7 km/h
Ground Pressure (Rubber)	0.33 bar

### Capacities

Fuel Tank	119.6 l
-----------	---------

### Hydraulic System

Hydraulic System Pressure (Standard and High Flow)	241.32 bar
Hydraulic System Pressure (Super Flow)	280 bar
Hydraulic Standard Flow	89.34 l/min
Hydraulic High Flow (optional)	138.55 l/min
Hydraulic Super Flow (optional)	158.99 l/min
System Relief @ Quick Couplers	237.87 bar
Auxiliary Std Flow	89.3 l/min
Auxiliary High Flow	138.5 l/min

### Dimension

Length without Attachment	3058 mm
Width	1981 mm
Width (with bucket)	2032 mm
Height with Operator Cab	2111 mm
Height to Bucket Hinge Pin	3353 mm
Reach @ Maximum Height	975 mm
Length of track on ground	1684 mm
Track Width	450 mm
Track Width - Optional	450 mm
Ground Pressure (Optional Tracks)	0.33 bar

### Features

5-Link Torsion Suspension Undercarriage	Optional
Radio Remote Control (SJC required)	Optional
Reversing Fan	Standard
Standard Display (includes keyless start)	Standard
Speed Management	Standard
Heated Cloth Air-Ride Seat	Optional
LED Front and Rear Lights	Standard
Joystick Control	Standard
Air Conditioning	Standard
Backup Alarm	Standard
BICS System (Interlock)	Standard
Suspension Seat	Standard
Two Speed Travel	Standard
Auxiliary Hydraulics	Standard
Bob-Tach Attachment System	Standard
Power Bob-Tach	Standard
Ride Control	Standard
Horn	Standard
Sound Option	Standard
Dual-Direction Bucket Positioning	Standard

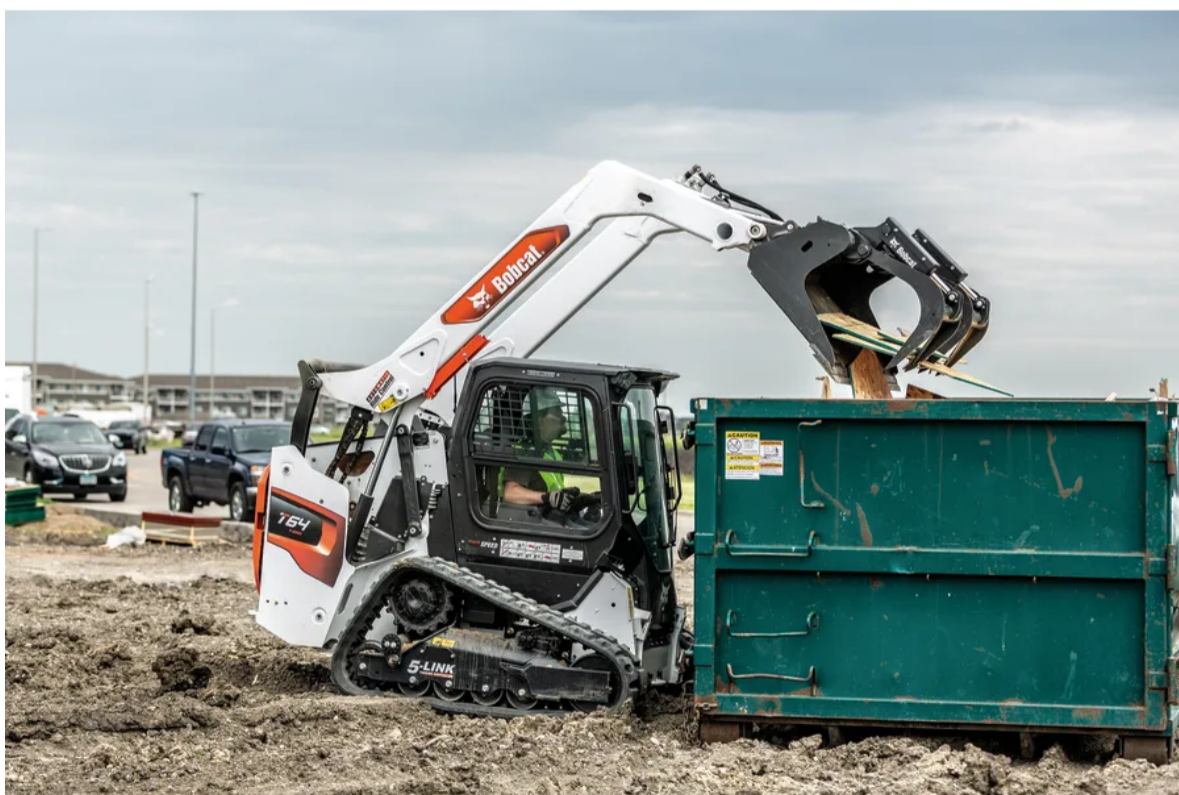
## T86 Features & Benefits

[Collapse All](#) -

### Performance 15

#### Powerful Hydraulics

When it comes to performance, Bobcat® loaders are in a class by themselves. Each component – including the engine, pumps and hydraulic system – is engineered to deliver maximum hydraulic performance so you can work quicker, lift more and outperform your competition.



[Learn More](#)

#### Super-Flow Hydraulics

Only Bobcat offers a compact loader that delivers three hydraulic flow options in one machine, setting a new industry benchmark in performance and attachment versatility.

The T86 compact track loader and S86 skid-steer loader take attachment versatility to a new level with standard-flow, high-flow and super-flow hydraulics. These machines can power standard-flow and high-flow attachments as well as attachments specifically designed for super-flow hydraulics. High-flow and super-flow hydraulics are optional features.

[Learn More](#)

### Increased Lifting Capabilities

The cast-steel lift arm sections of the R-Series loaders are stronger to ensure optimal performance. Combined with the optimized lift-arm linkage, you can handle more challenging jobs with greater confidence and ease.

[Learn More](#)

### Selectable Joystick Control

Bobcat Selectable Joystick Control, or SJC, is becoming the most popular control choice among operators. No other joystick in the industry comes close to delivering the level of customization and control. With SJC, you control your loader and attachments easily and comfortably. They're loaded with many Bobcat-exclusive features.

[Learn More](#)

### Automatic Ride Control

Automatic ride control reduces material spillage, allowing you to travel at faster speeds across rough terrain. Thanks to its dampening effect, the option also increases operator comfort by offering a smoother ride.



### Two-Speed Travel

### Remote Control

All loaders that are equipped with Selectable Joystick Control (SJC) can be operated by a remote-control system, so you can operate the machine without an operator in the cab. The remote control is completely portable. If you have multiple machines, you can quickly remove the remote from one machine and attach it to another in minutes.



### Standard Display

An easy-to-read display panel provides full-featured machine interaction and monitoring capabilities from inside the cab. Run your equipment more efficiently and solve more problems in the field with the innovative IQ display, which supports multiple languages.

[Learn More](#)

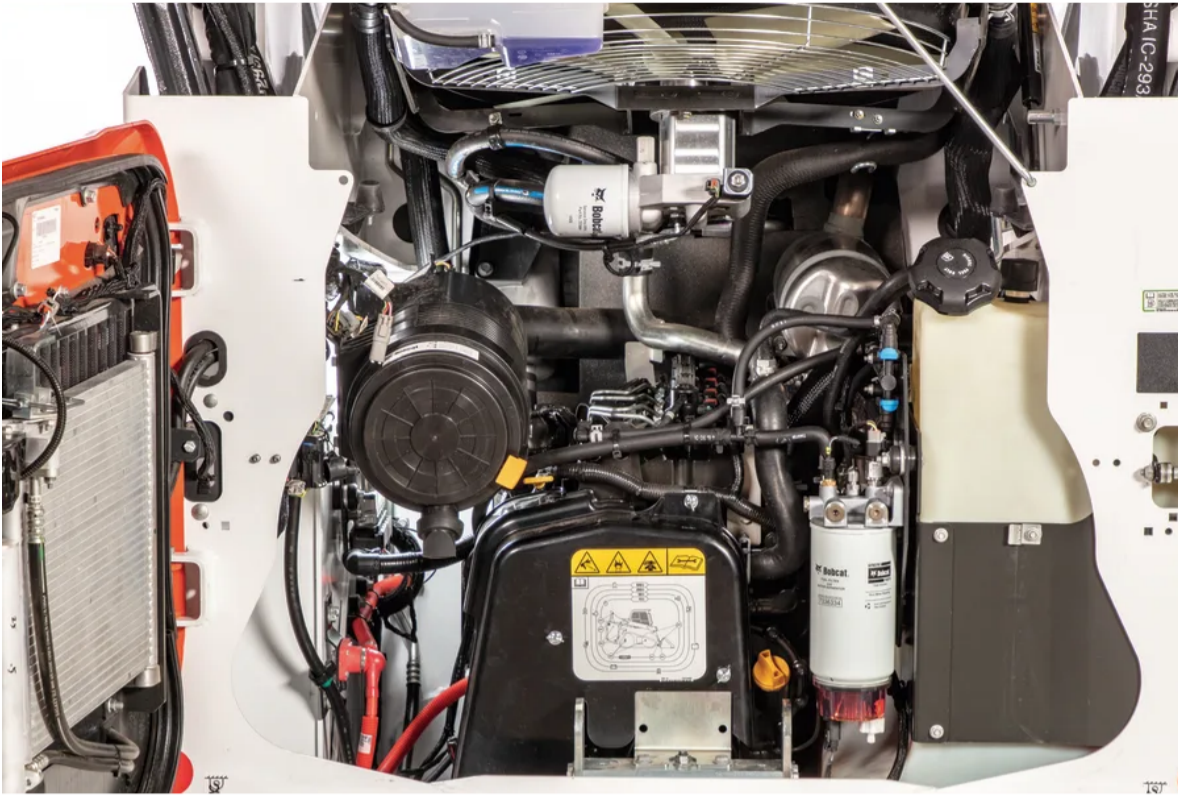
### Touch Display

With the most advanced in-cab display for compact equipment, you'll experience detailed machine information and unparalleled device connectivity. The optional Touch Display features an 800x480-pixel display resolution. Operators can easily view and toggle through machine performance and information on the wide, easy-to-use touchscreen that supports seven languages. Plus, it's waterproof and hardened to reduce scratching.

[Learn More](#)

### Redesigned Bobcat Engine

R-Series loaders feature a Bobcat® engine. An efficient design provides the performance you need while reducing and simplifying routine maintenance. Thanks to an innovative new fuel system, low fuel levels are more forgiving for busy operators. The engine also improves cold-weather operation and includes a variety of features that make maintenance and service more convenient.

[Learn More](#)

### Dual-Direction Bucket Positioning

Dual-direction bucket positioning, offered on R-Series loaders, keeps the load at a consistent angle throughout the lift cycle – both up and down – to reduce spilling which increases efficiency and improves ease of operation.

### Effective Weight Balance

When not carrying a load, Bobcat® skid-steer loaders deliver balanced, easy turning for ideal performance. They offer effective turning and skidding, reduced fuel consumption and power requirements, increased drive train and tire life, and less wear and tear compared to "flat-footed" machines sold by other manufacturers.



### MaxControl Remote Operation

Control your Bobcat loader using an app on your iOS smartphone. This system functions as an extra set of hands when help is limited, allowing quick two-person jobs to be handled by a single operator. It also enables operators to avoid repeated trips in and out of the cab.

[Learn More](#)

### Superior Lift Arms

With two lift path options, Bobcat loaders have you covered. Vertical-lift-path machines provide more reach at full lift height, while radius-lift-path models offer maximum reach at truck bed height.



### 5-Link Torsion Suspension Undercarriage

Experience elevated levels of performance and comfort with the optional torsion suspension undercarriage. As the industry's most advanced system, it offers unprecedented levels of durability, reduced maintenance requirements and faster track cleanout. It also reduces noise and vibration while you're working, a difference you'll feel through the entire machine so you can stay in the cab longer and get more work done. You'll wonder how you ever got along without it.



[Learn More](#)

## Comfort <sup>9</sup>

### Premium Comfort

Bobcat® loaders are designed with operators in mind. Comfort features include a roomy cab, a heated air-ride seat, automatic heat and air conditioning, ergonomic controls, innovative displays and options to keep you productive on long, challenging days.

[Learn More](#)

### Sound Dampening

If you work on a busy jobsite, you know that noise can be a daily frustration. Bobcat® loaders include many sound-dampening features that keep your cab quieter.

### Clear Visibility

R-Series loaders maximize open viewing areas by minimizing and removing surfaces and structures that intrude on your sightlines. Thanks to innovative engineering, robust materials and cutting-edge manufacturing, you get the best view on the jobsite.

[Learn More](#)

### Operator-Friendly Controls

Time-tested controls on Bobcat® skid-steer loaders and compact track loaders make it easier to work longer and perform precise work. The engine speed control is conveniently located in front of you. Fingertip controls simplify the operation of soil conditioners, sweepers, tillers, buckets, grapples and other attachments. Foot pedals can be adjusted to your preferences.



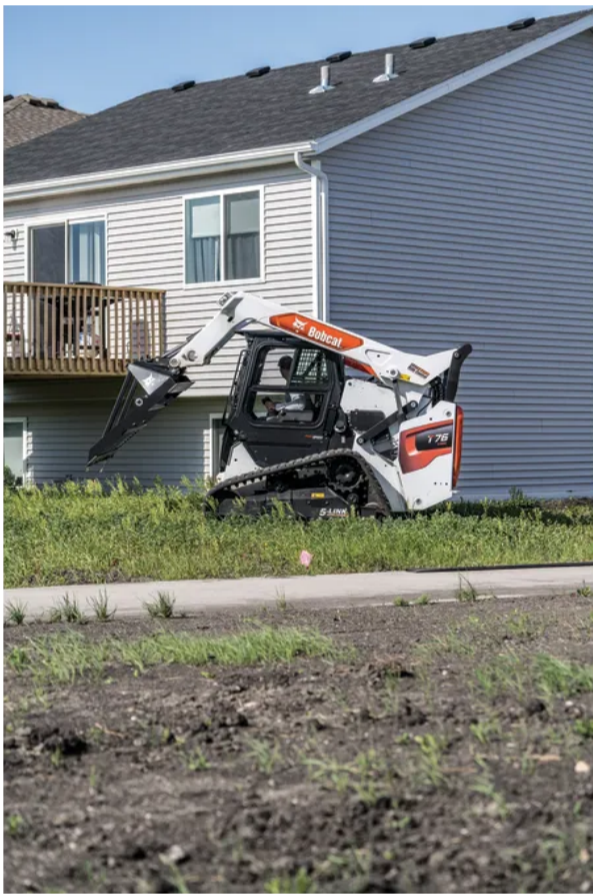
### Maximum Headroom and Legroom

Bobcat® skid-steer loaders and compact track loaders are engineered with large swing-open doors, and a lowered door threshold, which provide ample headroom for exit and entry. Inside, even tall operators will be comfortable with plenty of headroom. Additionally, the swing-open door doesn't take up cab space and can be removed without tools.



### Hydraulically Cushioned Cylinders

Smooth and quick Bobcat® lift cylinders are automatically cushioned at the fully lowered position. The tilt cylinders are also cushioned at the full dump and rollback positions. This reduces noise and increases comfort during operation.



### Clear-Side Enclosure

Maneuver more confidently. Enhance your productivity. Easily see to the sides of your machine. R-Series loaders offer an optional enclosure that maximizes visibility by reducing steel mesh screens from the side windows. The mesh-free windows are made from 3/8-inch-thick polycarbonate with an abrasion-resistant coating to allow the optimal view you demand with the durability you expect.



### One-Piece Pressurized Cab

A one-piece, sealed and pressurized cab on R-Series loaders provides a near-seamless interior for a new level of operator comfort. The cab design along with improved seals help reduce noise and vibration for enhanced sound isolation. There are no maintenance items under the rear hood for improved access to hose and electronic connections and major components. Most service items can be accessed without raising the lift arm.



### Heated Air-Ride Seat

Loader seats are upholstered in comfortable, breathable cloth and equipped with operator-controlled heat for warmth in cold weather. This optional seat provides peak operator comfort with air suspension that adjusts to your weight, smoothing out bumps on the jobsite for an industry-leading operator experience.



## Uptime Protection <sup>6</sup>

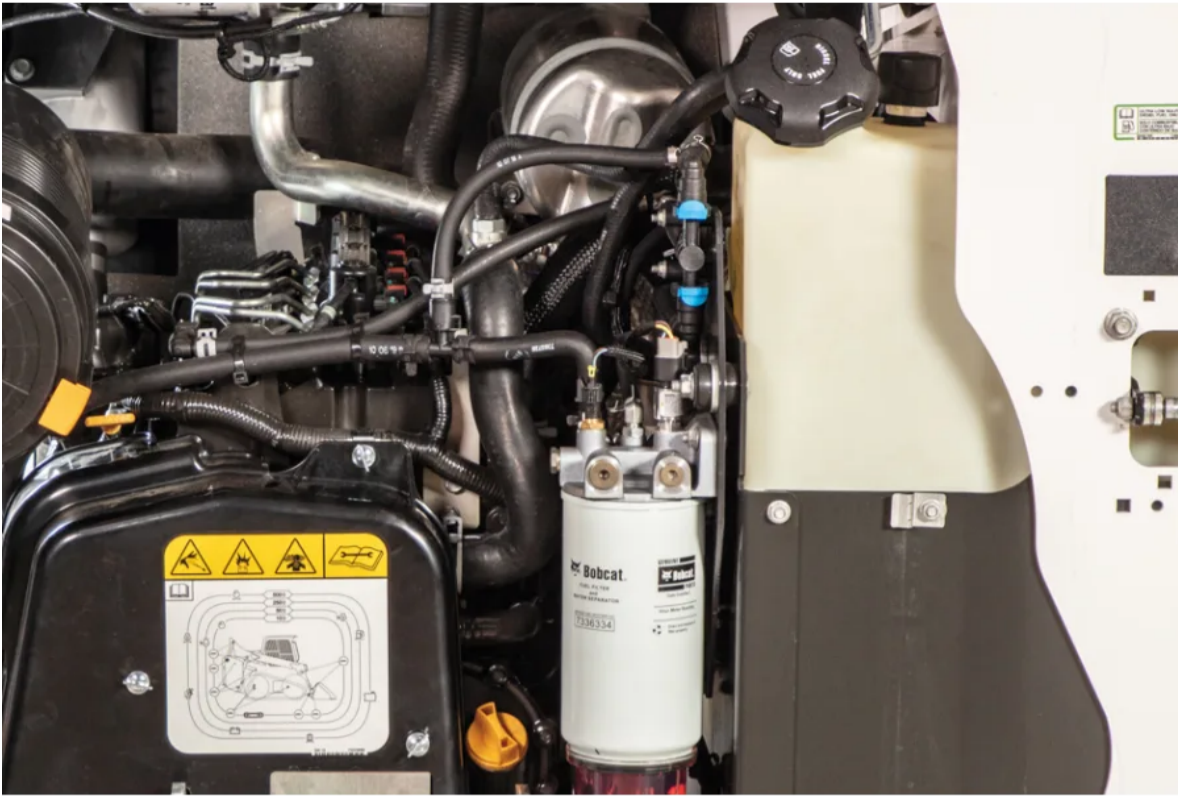
### Protected Components

R-Series loaders are engineered to protect critical components from jobsite hazards, vibrations and tough conditions to keep your machine in operation and you on the job.



### Improved Engine Uptime

The redesigned Bobcat® engine on R-Series loaders offers a variety of fuel features, including an efficient fuel tank vent filter, fuel filter pressure sensor, improved fuel recirculation valve and more to improve performance and uptime to keep you running strong all day long.



### Simple Machine Tie-Downs

Quickly secure your skid-steer loader or compact track loader without searching for hard-to-reach tie-downs. The tie-downs are easy to locate and use.



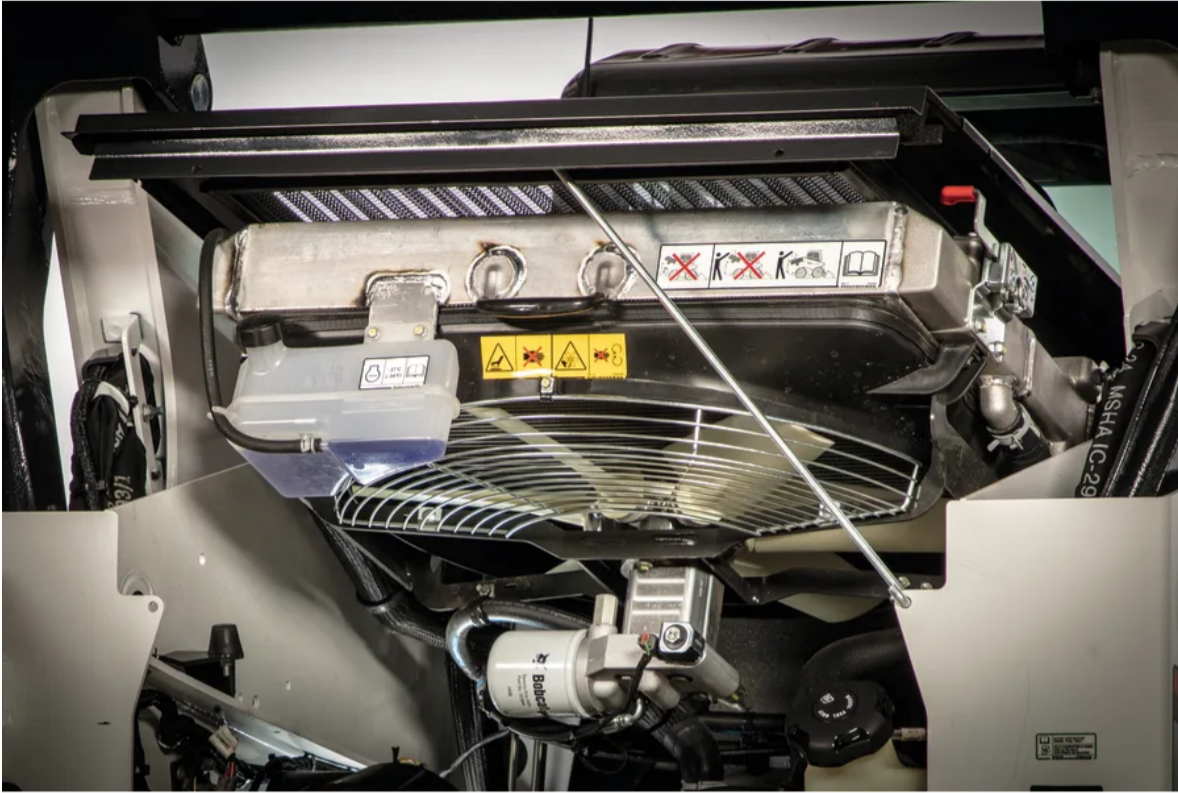
### Cast-Steel Lift Arms

R-Series loaders not only look tougher – they are tougher. Bobcat® lift arms feature cast-steel construction for increased material strength and rigidity. Cast-steel allows more material where it's needed, which provides greater strength while enabling a slimmer profile arm that also enhances visibility.



### Improved Cooling

As operators depend on their compact equipment to run longer and do bigger, more difficult jobs, effective cooling is essential. The R-Series cooling system is completely redesigned for optimal operation and maximum uptime.



[Learn More](#)

### Non-DPF Engine

The biggest advantage of our Tier 4 solution is simplicity. Bobcat engines meet Tier 4 regulations without a diesel particulate filter (DPF). This reduces downtime that occurs with DPF regeneration and long-term DPF maintenance costs. That allows operators to focus on working.



### Serviceability <sup>5</sup>

#### Hydraulic Oil Sight Gauge

Check your hydraulic oil level quickly and easily as you walk by your machine. Keep an eye on hydraulic oil levels and simplify your daily checks.



### Improved Engine Serviceability

When your engine maintenance is easy to do, your engine maintenance actually gets done. With the redesigned Bobcat® engine, checkpoints are within easy reach. Time is money, and preventive maintenance is quick and simple with R-Series loaders.



### Protected Battery/Remote Jumpstart

On R-Series loaders, the battery is located under the cab – separated from the engine compartment. Just lift the one-piece cab away for easy access. It's a convenient service location that protects the condition of your battery and provides more room for component access in the engine compartment. A remote terminal, located in the engine compartment, makes it easy to charge the battery or jumpstart the loader if needed.

### Tip-Up Cab

When it's time for maintenance or repairs, simply lift the entire R-Series cab out of the way using the hardware on the exterior of the cab.





### Grease Point Access

Maintenance is easier and faster with easy-to-access grease zerk locations on critical pivot points. Avoid laying on the ground or standing on tracks to grease the pins.



## Versatility <sup>3</sup>

### Attachment Versatility

Our attachments help you do much more than dig. Bobcat offers attachment versatility across carriers combined with unbeatable attachment support from the Bobcat dealer network.



### Bob-Tach Attachment System

Change attachments quickly and easily using the time-tested, standard Bob-Tach® mounting system included with every loader or upgrade to the optional Power Bob-Tach system for swapping non-hydraulic attachments without leaving your seat.



### Attachment Control Kit

Several attachments require control of more than one function, and our small, seven-pin attachment harness activates power and fingertip control functions while eliminating the need for the mechanical relays used on other loaders. Controls are fully integrated with your Bobcat® loader for a clean look and protected routing.

## T86 Attachments

[View All Attachments >](#)



**Bucket - Light Material, 92"**

Material handling.



**Bucket Light Material - 98"**

Material handling.



**Drum Mulcher - 50" (2-Speed), DCR**

Utility line and right-of-way maintenance.

[View Attachment >](#)[View Attachment >](#)[View Attachment >](#)

## Related Models

[View All Compact Track Loaders >](#)

### M3-SERIES



#### T450

Rated Operating Capacity (ISO)	1490 lb
Operating Weight	6424 lb
Horsepower	55 hp

[View Model >](#)

### M3-SERIES



#### T550

Rated Operating Capacity (ISO)	1995 lb
Operating Weight	7557 lb
Horsepower	68 hp

[View Model >](#)

### M3-SERIES



#### T595

Rated Operating Capacity (ISO)	
Operating Weight	
Horsepower	

[View Model >](#)

\*The prices advertised are suggested resale prices that Bobcat recommends to dealers for purposes of trying to ensure that Bobcat's products are price-competitive and that dealers have the proper incentives to market and service the products in accordance with Bobcat's brand standards. Bobcat reserves the right to change suggested resale prices, product specifications, and options at any time. The final sales price is determined independently by the selling dealer in its sole discretion. Pricing is country specific. Bobcat's suggested list prices are for products sold in the US only. Product configuration may differ from image(s) provided. See dealer for full product details.

\*Offer ends 7/31/2023. Available at participating and eligible dealers only. Offer may vary by product type, series, model and select units in dealer's current inventory. Must take delivery from dealer stock by 7/31/2023. Offers available on new equipment in US and Canada only. Some restrictions apply. Length of contract and rate may vary. Monthly payment subject to change. Prior purchases not eligible. See dealer for details. Financing provided on approval of credit by authorized Bobcat finance providers to well-qualified buyers. All finance programs and rates are subject to final approval by the applicable Bobcat finance provider and are subject to change at any time without notice. Administrative fees may apply. Offer not available to government accounts, national accounts and municipal/utility bid customers. Bobcat Company reserves the right to extend or discontinue any of these programs at any time without prior notice.



**WARNING:** This product can expose you to chemicals including engine exhaust (including diesel engine exhaust when equipped), lead and lead compounds, mineral oils, soots, phthalates, and carbon monoxide which are known to the State of California to cause cancer and birth defects or other reproductive harm. For more information go to [www.P65Warnings.ca.gov](http://www.P65Warnings.ca.gov).

Certain specification(s) are based on engineering calculations and are not actual measurements. Specification(s) are provided for comparison purposes only and are subject to change without notice. Specification(s) for your individual equipment will vary based on normal variations in design, manufacturing, operating conditions, and other factors.